

Welcome to SLES Kindergarten Orientation!

¡Bienvenidos a la Orientación de Kindergarten de SLES!

Si necesita un intérprete, consulte Sra. Diaz en la parte posterior de la sala.



GREAT
THINGS
COME FROM
GREAT
BEGINNINGS.



Transition to Kindergarten- Kindergarten Orientation 2021-2022

Expectations and Outcomes



- More about South Lakes Elementary
- Kindergarten Readiness
- Kindergarten Curriculum
- Registration and Staggered Entry
- Family Resources
- Q&A

Admin Team




Meet our Staff!

Ms. Kim Short

Principal

Hobbies: : I love spending time with my family. Cooking, reading, napping and sitting on the beach are my favorite quiet time hobbies.



 @SouthLakesE11
wcpss.net/southlakeses

Admin Team




Meet our Staff!

Ms. Erica Everett

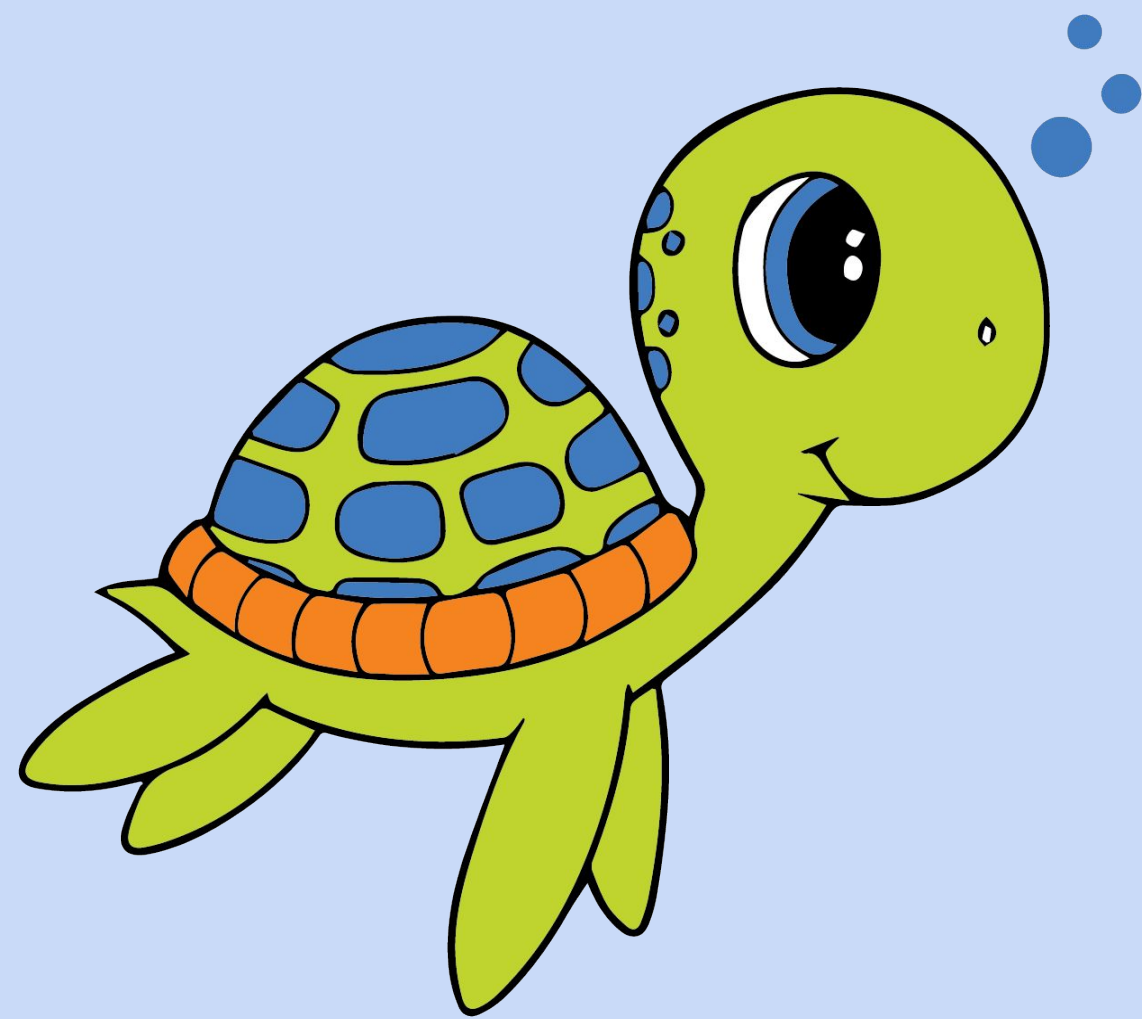
Assistant Principal

Hobbies: Spending time with family and friends, running, traveling, reading, exploring Raleigh-Durham



 @SouthLakesEI1
wcpss.net/southlakeses

SOUTH LAKES ELEMENTARY SCHOOL



Welcome home!

We're glad you are here!

Here we are family;
Here we achieve our dreams;
Here we make a difference;
Here is where YOU belong!

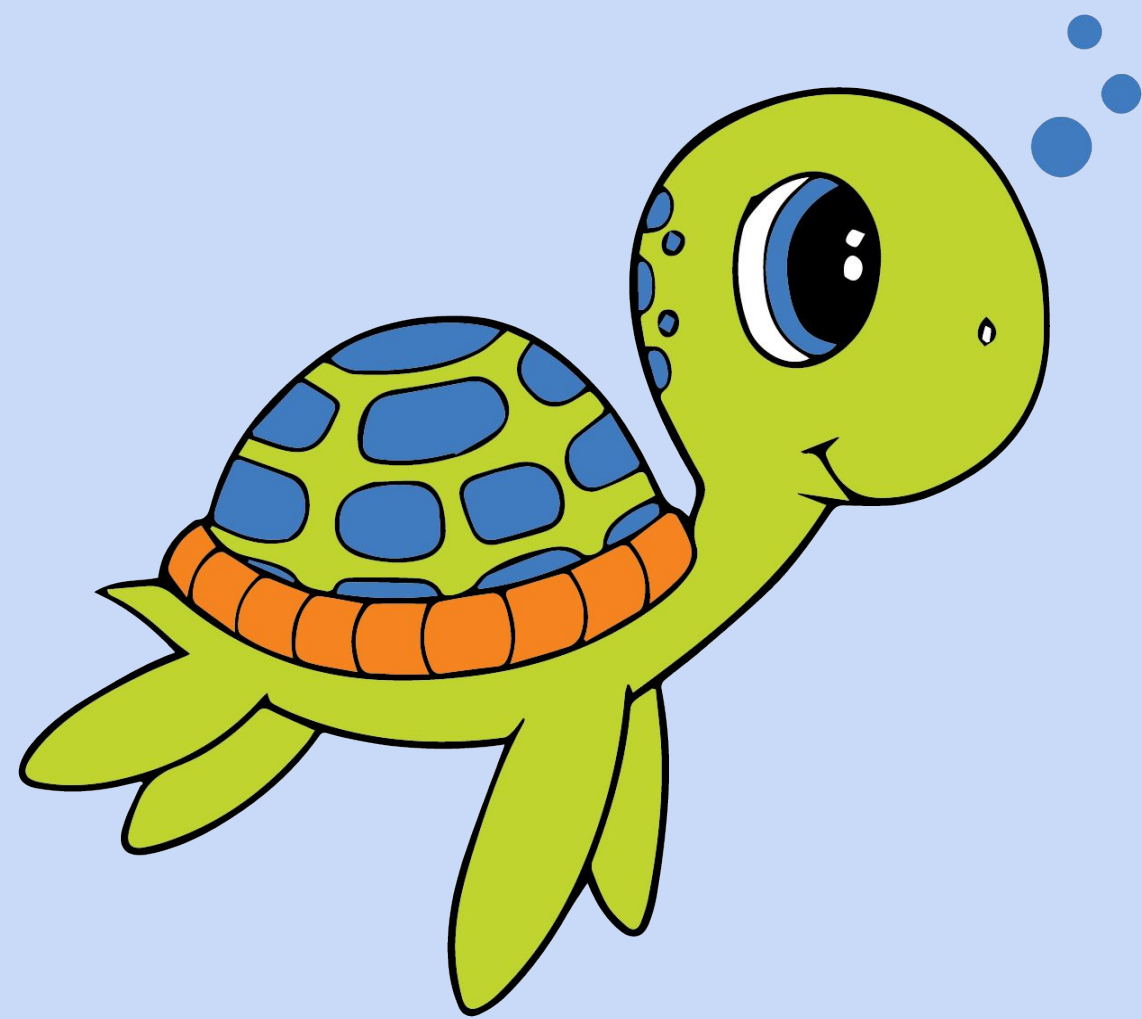
High Expectations for all students & staff

Enthusiasm that is shared and visible for all we do
Restorative Practices, particularly Circle Keeping,
to create and sustain a strong sense of family &
community; SLES will be a place where everyone
belongs

Engagement; everyone in our school family should
feel fully engaged in South Lakes Elementary

**We want every child who comes to South Lakes
Elementary School to feel they are seen and
have a place to belong!**

SOUTH LAKES ELEMENTARY SCHOOL



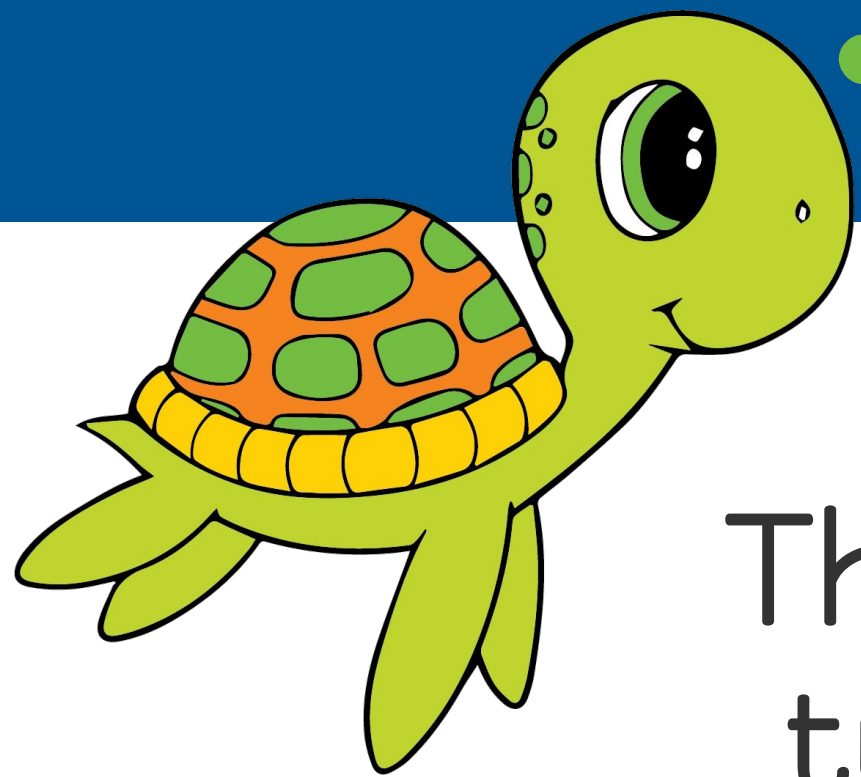
Welcome home!
We're glad you are here!

School phone number:

919-694-8066

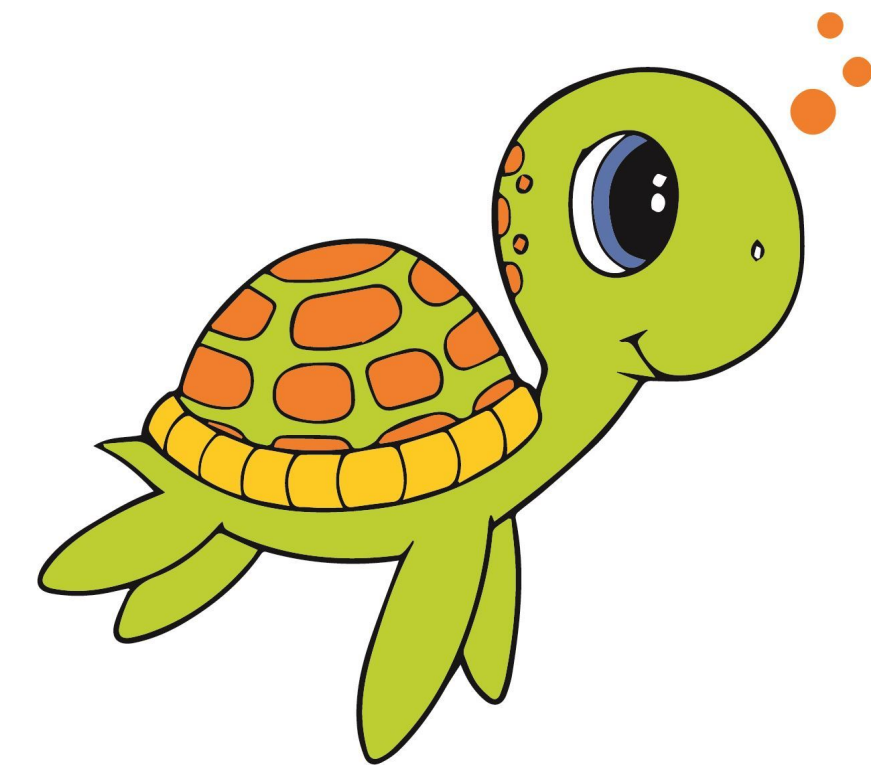
School website:

<https://www.wcpss.net/southlakeses>

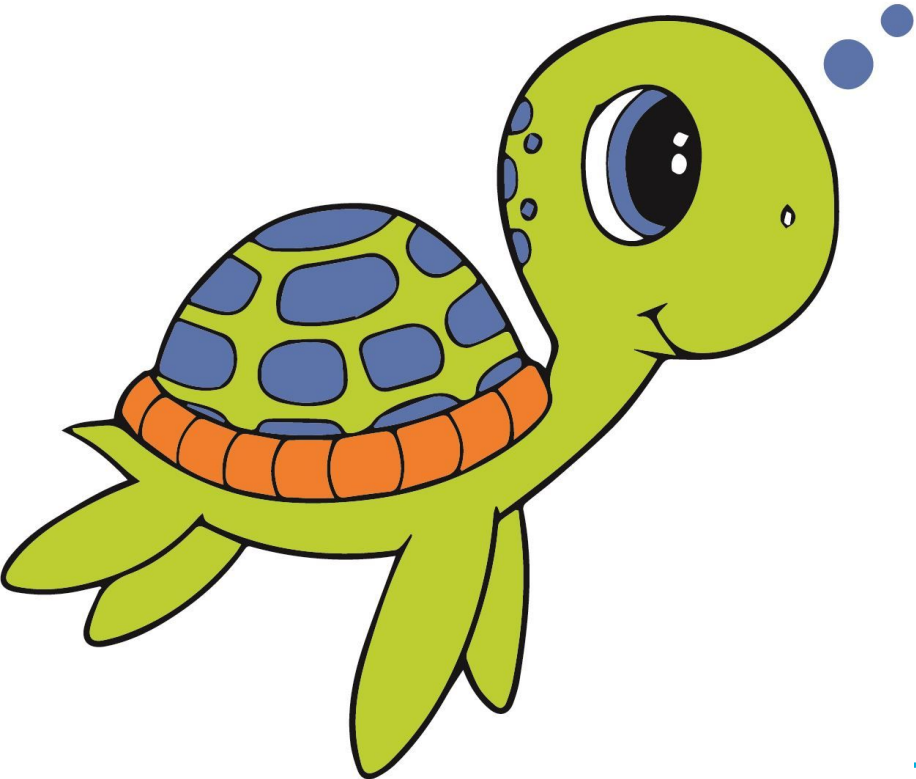


Meet our mascot, Splash!


The **sea turtle** is our mascot. We know sea turtles do not live at a lake. However, we plan to do what others believe to be impossible at “The Lake.”



Our school colors are **green**, **blue** and **orange**. You will see our mascot made in different ways using these colors. “We want everyone to be comfortable in their own shell.”



Positive Behavior Intervention and Support (PBIS)



S

Show Safety

W

Work Responsibly

I

Impress with Respect

M

Meet High Expectations

Restorative Practices - Circles

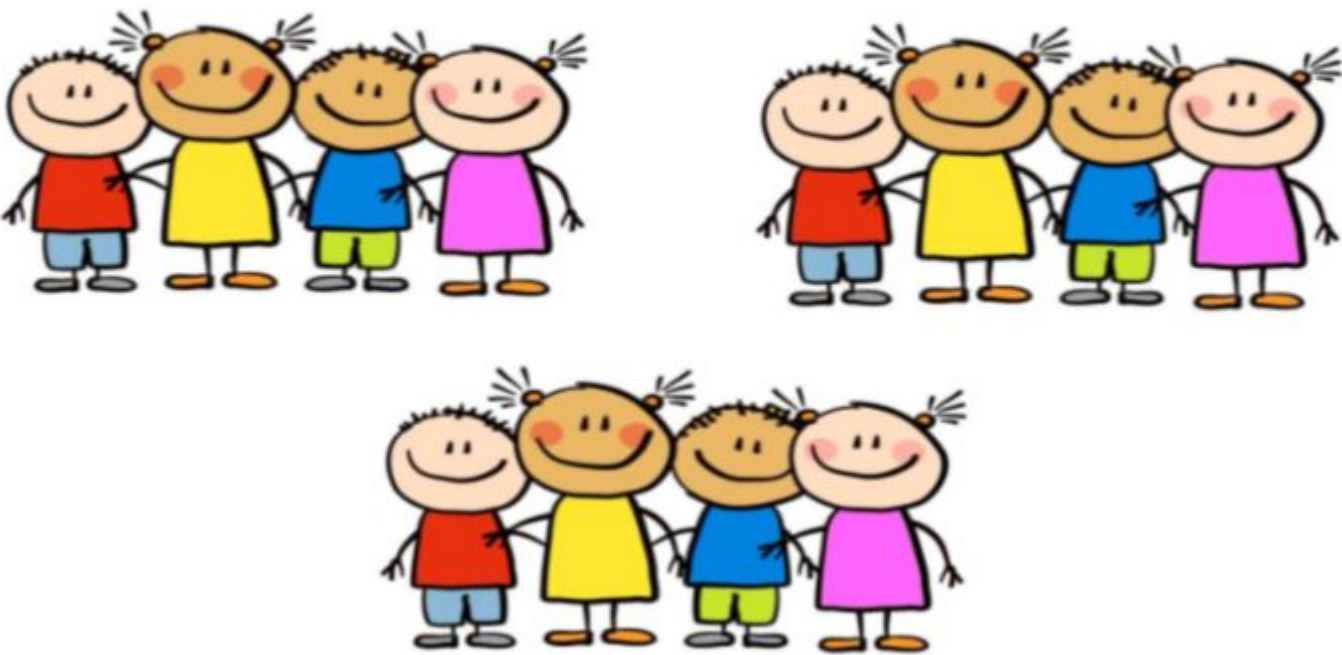
- What does Restorative Practices mean?
 - Restorative Practices create healthy relationships and foster student connection.
- What are Circles?
 - In circle, everyone is respected and gets the opportunity to share without interruption. The social and emotional well-being of all circle participants is honored and valued.

Shifts from Preschool to Kindergarten

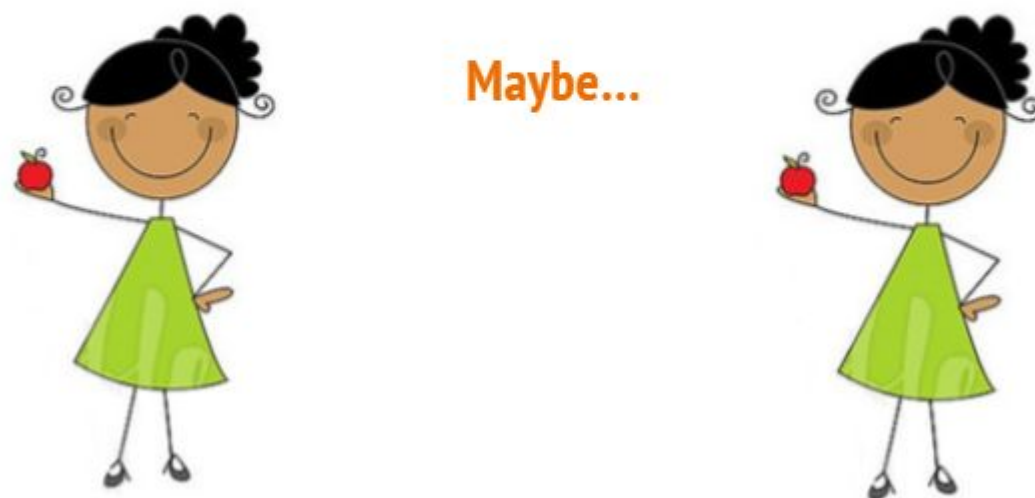
Staffing: Preschool



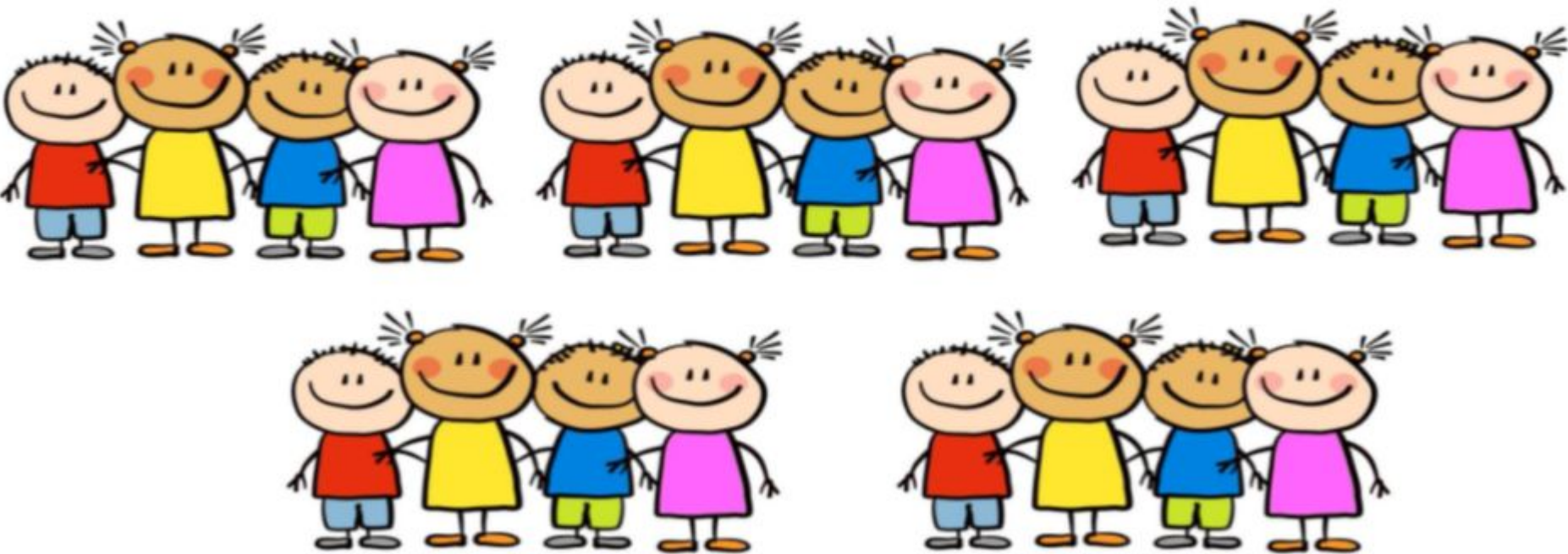
Class size: Preschool



Staffing: Kindergarten



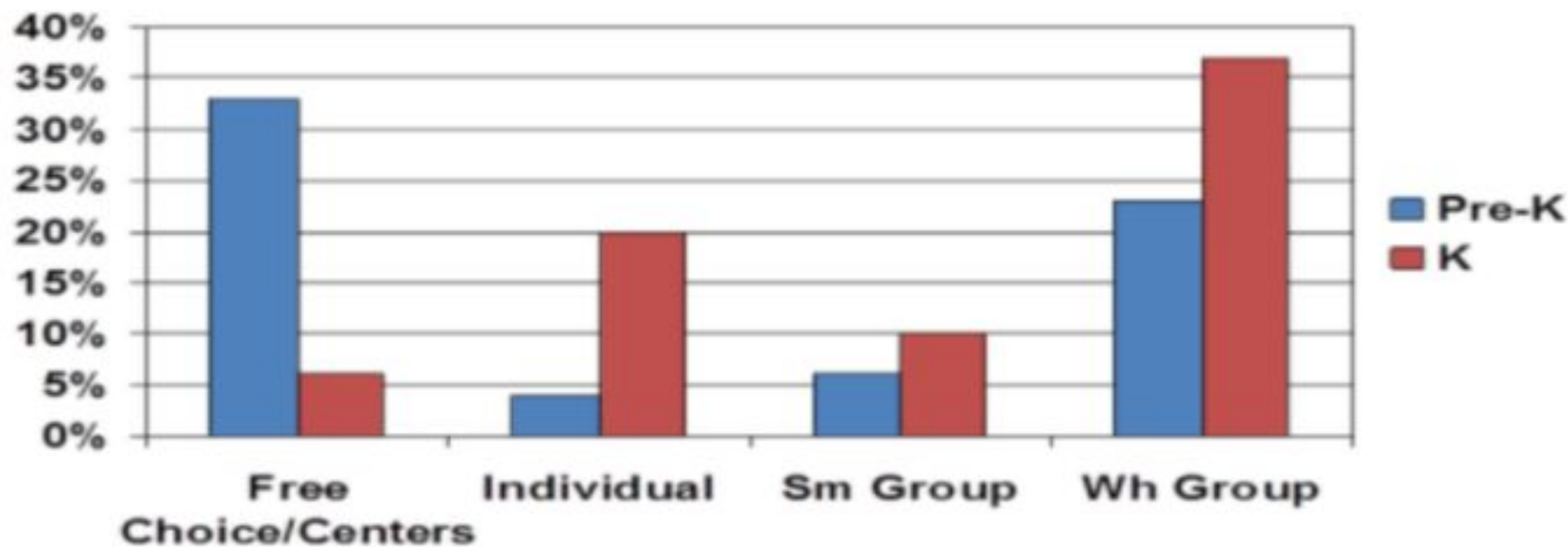
Class size: Kindergarten



Shifts from Preschool to Kindergarten

Types of Activities

CHANGES FROM PRE-K TO KINDERGARTEN



Rimm-Kaufman & Pianta, 2000

More about Kindergarten in WCPSS



What are some ways you can prepare at home?



Healthy Routines

- Establish a bedtime that gives 10+ hours of sleep.
- Ensure immunizations and health exams are current.
- Stick to regular times for meals.

Positive Approaches toward Learning

- Provide toys and games for exploration and discovery.
- Create opportunities to stay on task for 15 minutes (or more).

Social and Emotional Development

- Talk about feelings.
- Facilitate friendships with other children.
- Set basic rules and allow child to adapt to change.
- Celebrate independence.

Language Development

- Talk, talk, talk at home!
- Read together every day.
- Give multiple step instructions (1, 2, 3).
- Encourage sentences of several words.

Health and Physical Development

- Run, jump, climb, swing, and throw together.
- Develop independence-dressing, eating, and personal hygiene.
- Share a space to use scissors and crayons.

General Knowledge

- Teach first and last name.
- Learn basic colors.
- Practice numbers and letters.
- Retell stories together.

What will my child do during the school day?



8:45-9:15- Arrival/Morning Work

9:15-9:35- Morning Circle

9:40-10:20- Specials

10:25-11:20- Letterland

11:25-11:50- Lunch

11:55-12:50- ELA

12:55-1:25- Recess

1:30-1:40- Snack

1:40-2:00- Writing

2:00-3:00- Math

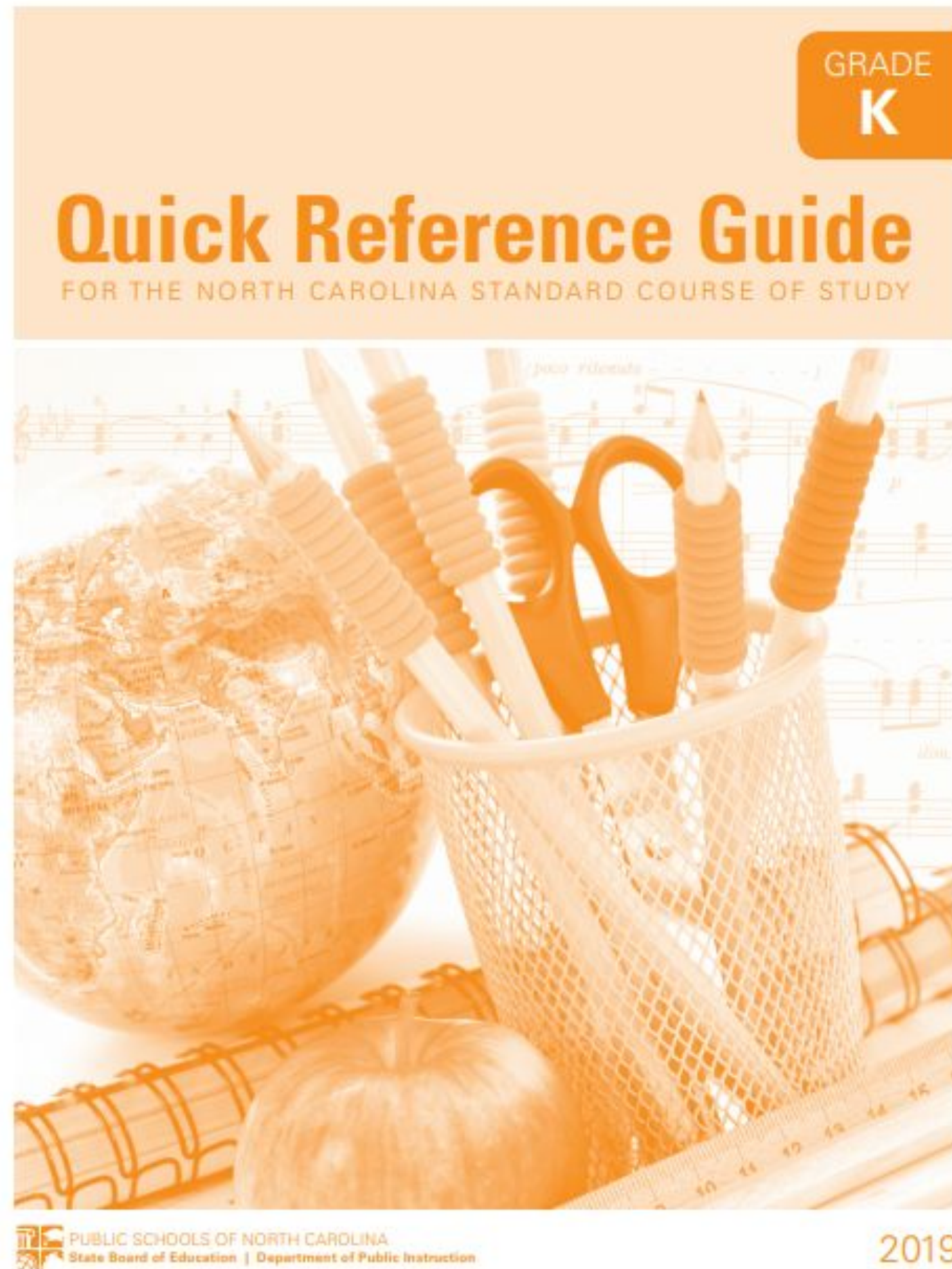
3:05-3:35- Science/Social Studies

3:45- Dismissal

Sample Schedule



Kindergarten Curriculum



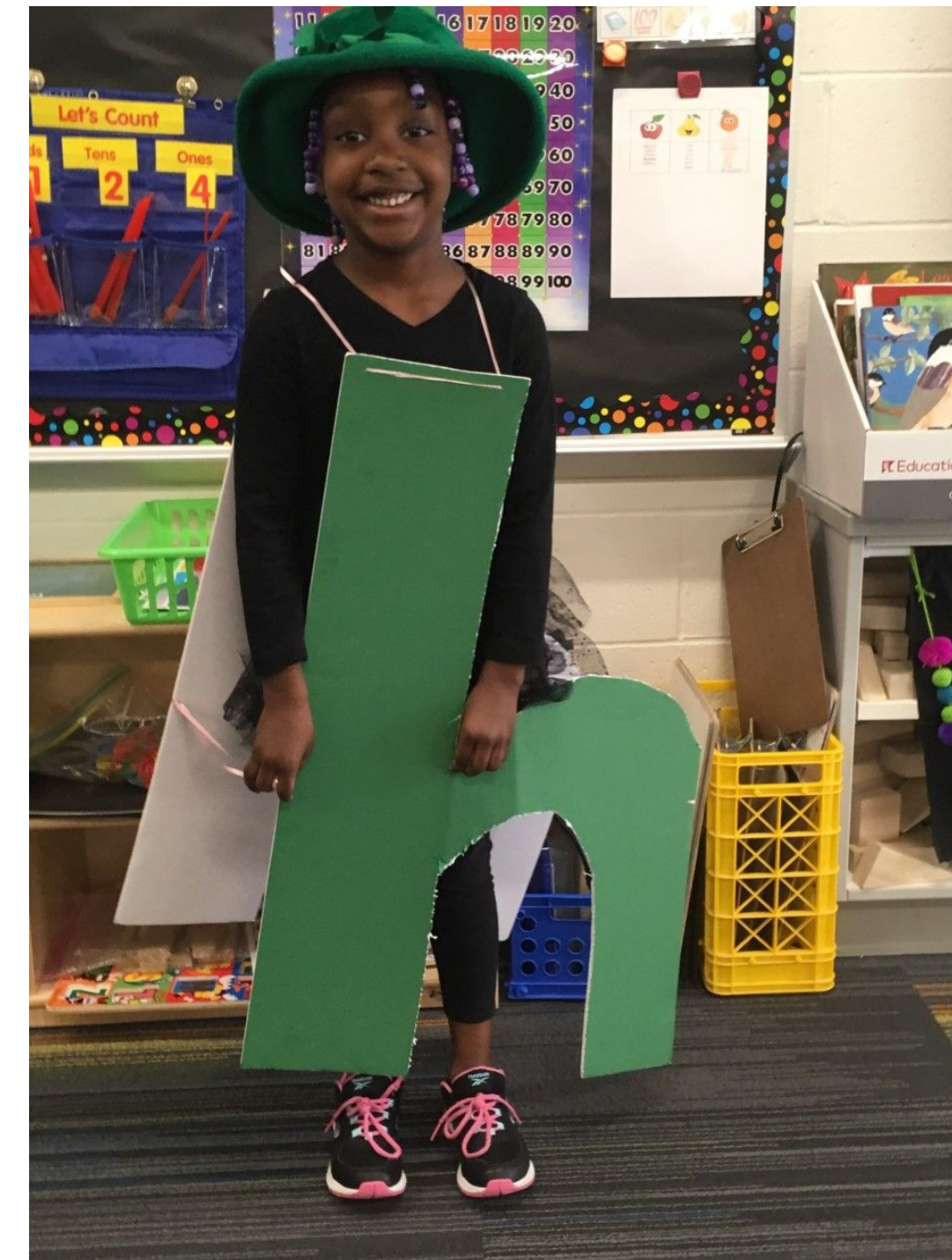
Standard Course of Study

- Math
- Arts Education
- English as a Second Language
- Healthful Living
- Information and Technology Skills
- Science
- Social Studies
- Guidance

*standards define what students should be able to do by the end of the school year

Phonics Curriculum

- Letterland
 - Multi-sensory, systematic approach
 - Based on scientific research
 - Uses engaging songs and stories to teach students the structure of the English language



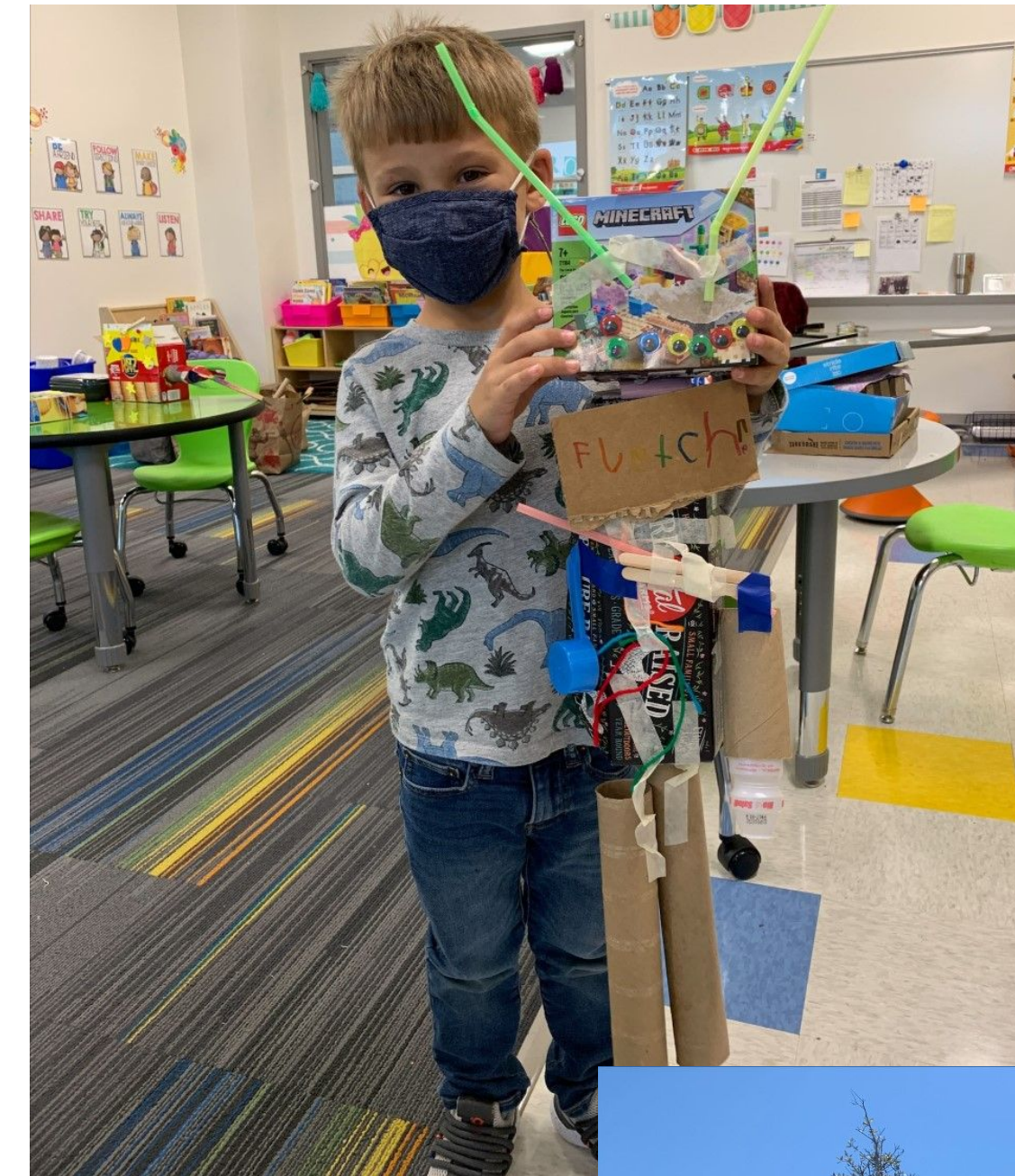
Literacy Curriculum: EL Education

Module 1: Building Literacy in a Collaborative Classroom: Toys and Play

Module 2: Learning Through Science and Story: Weather Wonders

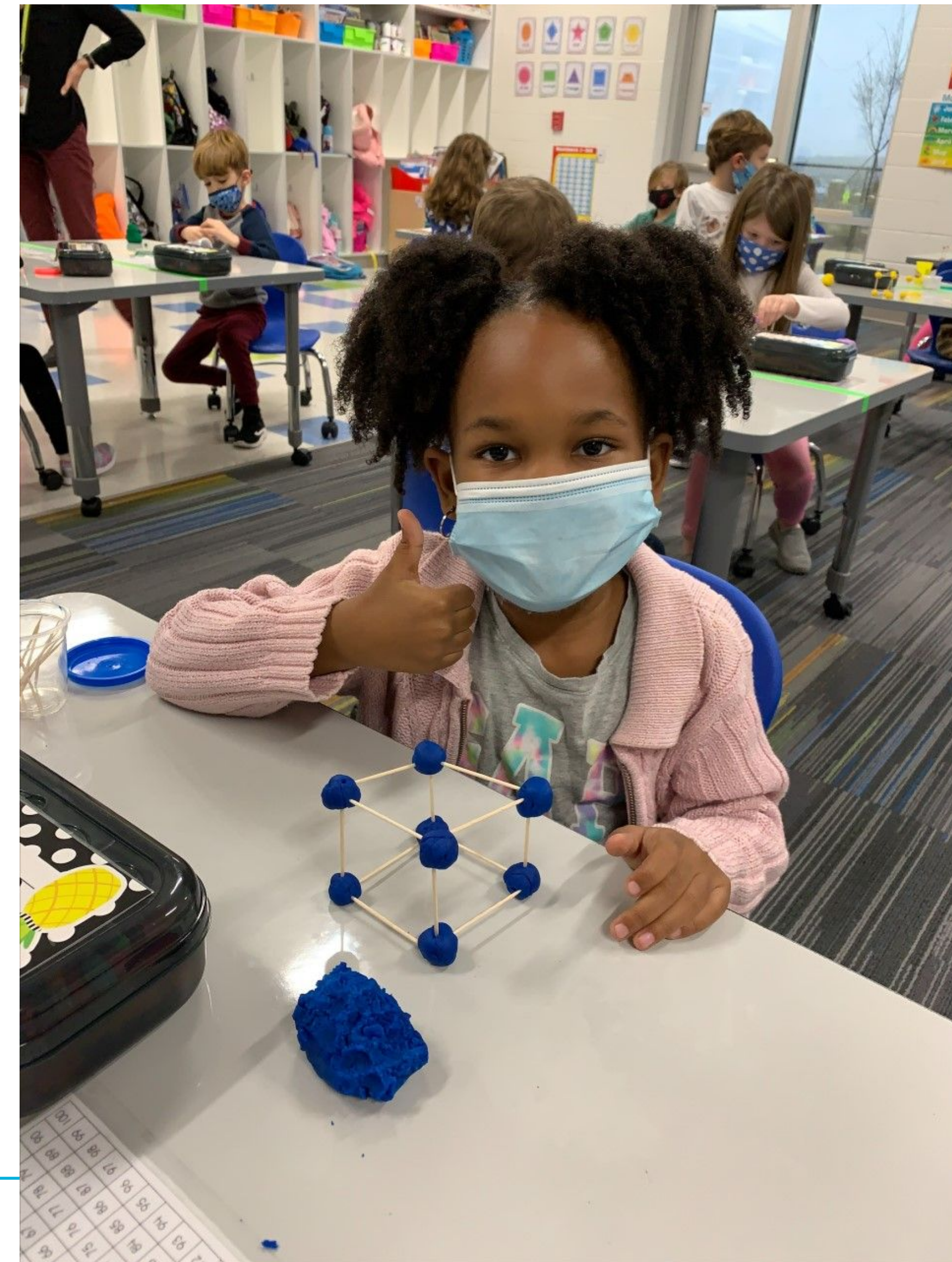
Module 3: Researching to Build Knowledge and Teach Others: Trees are Alive

Module 4: Contributing to Community: Enjoying and Appreciating Trees



Math Curriculum

- Counting to 100 by 10's and 1's
- Counting Objects
- 2D and 3D shapes
- Attributes
- More than, less than and equal to
- Ten Frames
- Teen Numbers
- Addition and Subtraction



Specialist Team

Art

Ms. Stormy
Schumann



PE

Ms. Lindsay
Scinta



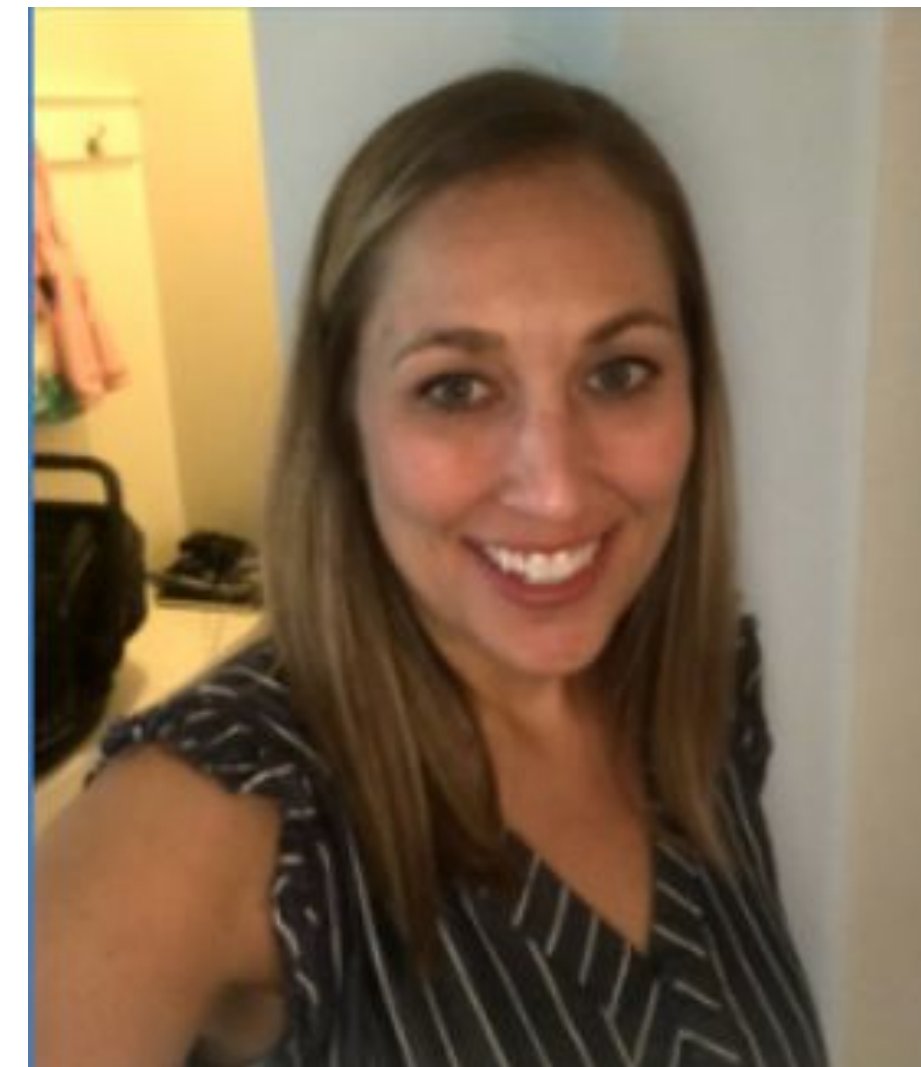
Music

Ms. Carolyn
Moravek



Media

Ms. Emily
Adams



Health and Wellness

Ms. Ashton
Weaver



School Calendar



- We follow the traditional calendar
- Calendar Info can be found on WCPSS website:
<https://www.wcpss.net/domain/19>
- Attendance Requirements
- Important Dates
 - Staggered Entry- Your child will attend one day on August 29, 30 or 31.
 - Kindergarten Meet the Teacher- Friday, September 1
 - First day of school for Kindergarten- Tuesday, September 6.

Staggered Entry

- Small group orientation
- Attend only 1 day of the first week
Monday, August 29
Tuesday, August 30
Wednesday, August 31
- Gradual transition
- Informal assessment
- The first full day of school will be:
Tuesday, September 6, 2022

Teacher assignment details will be shared after staggered entry.



School Supplies

- Backpack (no rolling backpacks)
- Headphones
- 2 boxes of 24 crayons
- 6-8 glue sticks
- 1 large pink eraser
- 1 pair of child safety scissors
- 1 pack of #2 pencils
- 1 box of tissues
- 2 primary composition notebooks (writing lines on the bottom, blank space on the top)
- 1 reusable water bottle that comes and goes each day
- 1 oversized art shirt labeled with name
- 1 change of clothes (please include: underwear, socks, pants and shirt, also label each item with your child's name)



Transportation



- Transportation / Bus Rider Registration
- Bus Rules and Expectations
- Childcare Transport
- Transportation Tags
 - Make sure to request a carpool number!
- Carpool Carpool tags will be sent out schoolwide.
- Not yet a walker zone
- Transportation Changes

It is important to communicate transportation plans with your child's teacher.

Here Comes the Bus



- <https://herecomesthebus.com>
- Great website/app that will track your child's bus
- App will not update with your student's stop and info until August once routes are determined.
- School updates via school website bus departure and bus updates daily.

Meals and Snacks

- Breakfast (\$1.50)
- Lunch (\$3.00)
 - Join your child for lunch beginning in October
 - No outside food (ex. Chick-Fil-A)
- Free-and-Reduced Application
 - Myschoolapps.com - Apply starting July 1
- Student ID numbers - Lunch account (MySchoolBucks.com)
- Snacks
 - no juice in classrooms and one healthy snack



You can prepare at home by allowing your child to open containers, encouraging independence while cleaning up, and establishing regular meal times for your family.

Whats for lunch today?

Health and Wellness



- Required health forms and vaccinations
- Student medication
- Illness policy
 - Return to school
- COVID-19 updates and best practices
- School Nurse: Kayla Brown kbrown2@wcpss.net

Have you registered?

The screenshot shows the Wake County Public School System website. At the top, there is a navigation bar with 'VIEW OUR SCHOOLS' and links for international families in various languages. Below this is the Wake County Public School System logo and a 'Staff Intranet' link. A main navigation bar includes 'PARENTS', 'STUDENTS', 'COMMUNITY', 'CAREERS', 'ACADEMICS', 'PROGRAMS', 'SERVICES', and 'ABOUT US'. The 'PARENTS' section is highlighted, and the 'Student Assignment' page is selected. On the left, a sidebar lists links: Overview, New Student Enrollment, Change Your School, FAQ, and Contact Us. The main content area is titled 'New Student Enrollment' and features a photo of a smiling woman with two children. Below the photo, a welcome message states: 'Welcome to the Wake County Public School System! Here is how to enroll in our school district. If you have questions, please [contact the Office of Student Assignment](#) online or at 919-431-7333. [En Español](#)'. A 'Step 1: Find your base school' section explains that students are assigned to a base elementary, middle, and high school based on their home address and provides a link to the 'address look-up tool'. A red box on the right says 'Update Your Address' and includes a link to learn more about how to update an address.

Part 1:

Online enrollment

Part 2:

Presenting documents at your child's school.

Part 3:

Obtain and submit proof of immunizations and NC Health Assessment

**You must enroll at your base school first prior to requesting a transfer.*



***EVENTS *FUNDRAISERS**

SERVICE *ADVOCACY

Questions, comments, Ideas?

Info@southlakespta.org

Our mission is to make every child's potential a reality by ENGAGING and EMPOWERING families and communities to advocate for all children.

At South Lakes that means engaged families creating a welcoming environment with exciting programs and opportunities for ALL of our Sea Turtles to SWIM into a bright future.

Local Community Events

- Letterland Day is now 3 weeks! May 2-27, 2022
 - More information can be found at:
<https://www.wcpss.net/Letterland-Day>
- Marbles- Kick off to Kindergarten Event
 - Saturday, August 20, 2022 9am-5pm
 - Free for rising kindergartener and family with pre registration
 - <https://www.marbleskidsmuseum.org/kick-off-to-kindergarten>



What's Next?

Visit the tables set up in the hallway and gym for more information about the following:

- Carpool Questions
- Bus Registration and questions
- PTA sign up and spirit wear
- Nurse (NC health form, health plans and medications questions)
- Kindergarten Team for general questions you may have
- Photo opportunity for your future sea turtle!
- Meet and mingle with other Kindergarten families!