



**WAKE COUNTY
PUBLIC SCHOOL SYSTEM**

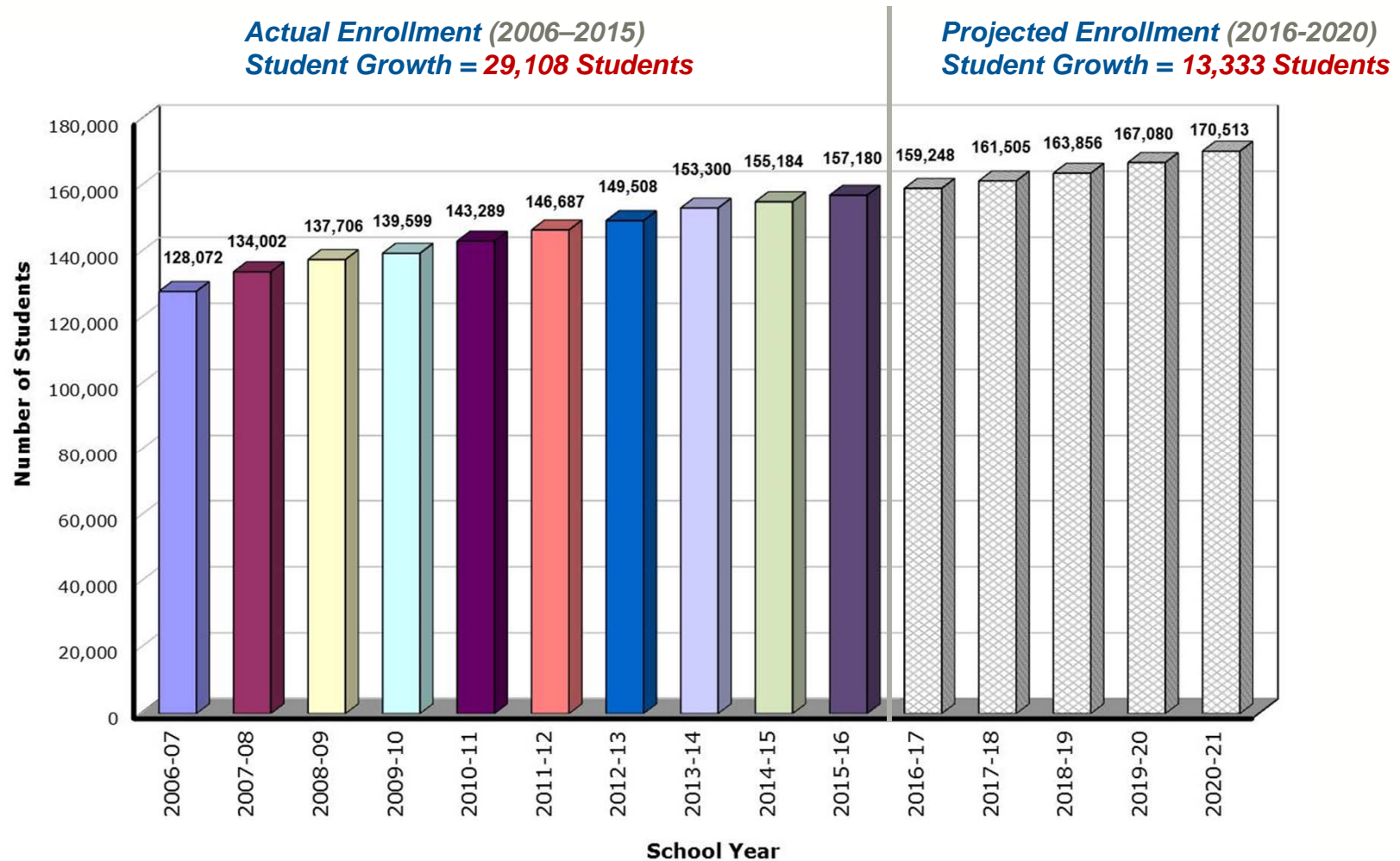
WCPSS ENROLLMENT PLAN – 2017-18

Year Three of a Multi-Year Approach to Growth
Management

FIRST DRAFT

Board of Education Work Session, September 6, 2016

Enrollment Growth, 2006 – 2020

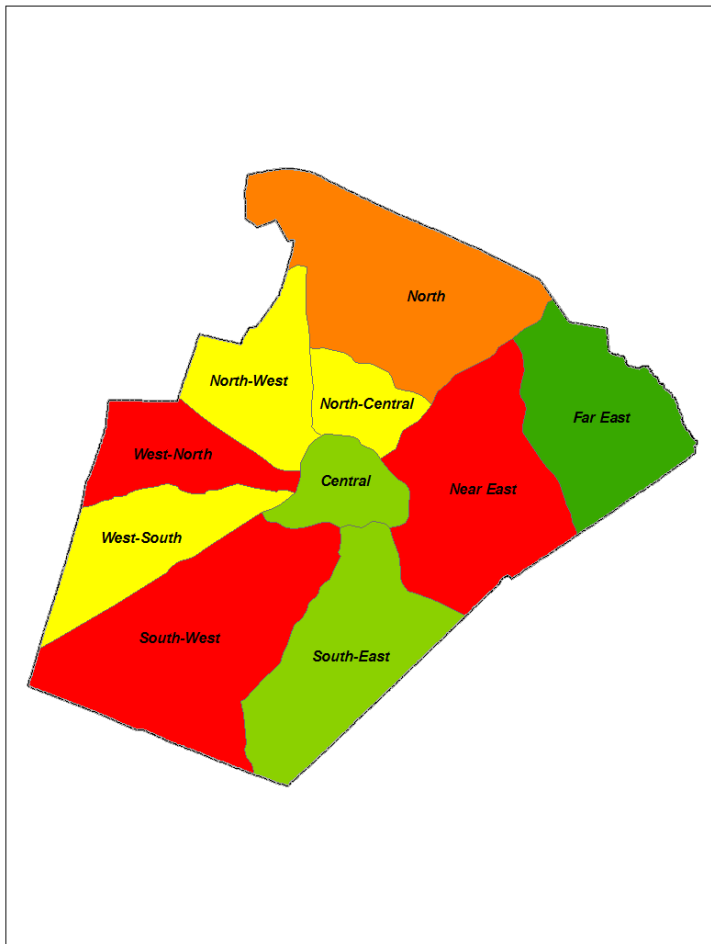


Data Sources:

Enrollment: WCPSS Month-2 ADM, NCDPI; Forecast: OREd/WakeGov/WCPSS - December 4, 2015

It's All About Growth...

Net Gain: 2012-13 to 2015-16



Planning Region	Net Gain: 2012-13 to 2015-16	Forecasted Gain: * 2015-16 to 2020-21
West-North	2,619	1,142
South-West	2,120	4,878
Near East	1,349	4,807
North	547	1,032
North-Central	350	- 502
North-West	329	- 234
West-South	296	2,057
Central	250	- 472
South-East	249	2,588
Far East	23	433

* Negative growth in some areas is a result of lower system-wide K-12 forecast and significantly increased growth potential in other areas.

Data Sources:
WCPSS student geocode; SPDM forecast: OREd/ITRE, April 2016

New Schools

Multi-Year Enrollment Plan: School Openings CIP 2013 (2015-2018) Future Funding (2019-2023)

Code	School Name	School Openings								
		2015-16	2016-17	2017-18	2018-19	2019-20	2020-21	2021-22	2022-23	2023-24
E-20	Abbotts Creek ES	E-20								
E-32	Scotts Ridge ES	E-32								
H-10	Apex Friendship HS	H-10								
E-36	Beaverdam ES		E-36							
E-43	Oakview ES		E-43							
E-38	Pleasant Grove ES		E-38							
E-37	White Oak ES		E-37							
M-8	Pine Hollow MS		M-8							
FLEX-HS	Crossroads FLEX HS		FLEX-HS							
E-33	Hortons Creek ES			E-33						
E-40	Rogers Lane ES			E-40						
M-13	River Bend MS			M-13						
CTE-HS	CTE HS			CTE-HS						
E-31	Bryan Road ES				E-31					
E-45	Buckhorn Creek ES				E-45					
M-11	Apex Friendship MS				M-11					
H-8	South Garner HS				H-8					
H-7	Green Level HS					H-7				
E-50	E-50 ES					E-50				
E-XX	E-XX ES (TBD)					E-XX				
M-16	M-16 MS					M-16				
E-28	Poole Road ES						E-28			
E-24	E-24 ES						E-24			
CR-XX	CR-XX HS (TBD)						CR-HS			
E-XX	E-XX ES (TBD)							E-XX		
H-13	Willow Spring HS							H-13		
CR-XX	CR-XX HS (TBD)							CR-HS		
E-XX	E-XX ES (TBD)								E-XX	
E-XX	E-XX ES (TBD)								E-XX	
M-XX	M-12 or M-14 (TBD)								M-XX	
H-XX	H-XX HS (TBD)								H-XX	
ALP-XX	ALP-XX 6-12 (TBD)								ALP-XX	
E-XX	E-XX ES (TBD)									E-XX
E-XX	E-XX ES (TBD)									E-XX
E-XX	E-XX ES (TBD)									E-XX
ALP-XX	ALP-XX K-5 (TBD)									ALP-XX

CIP 2013 = 15 schools

In addition:

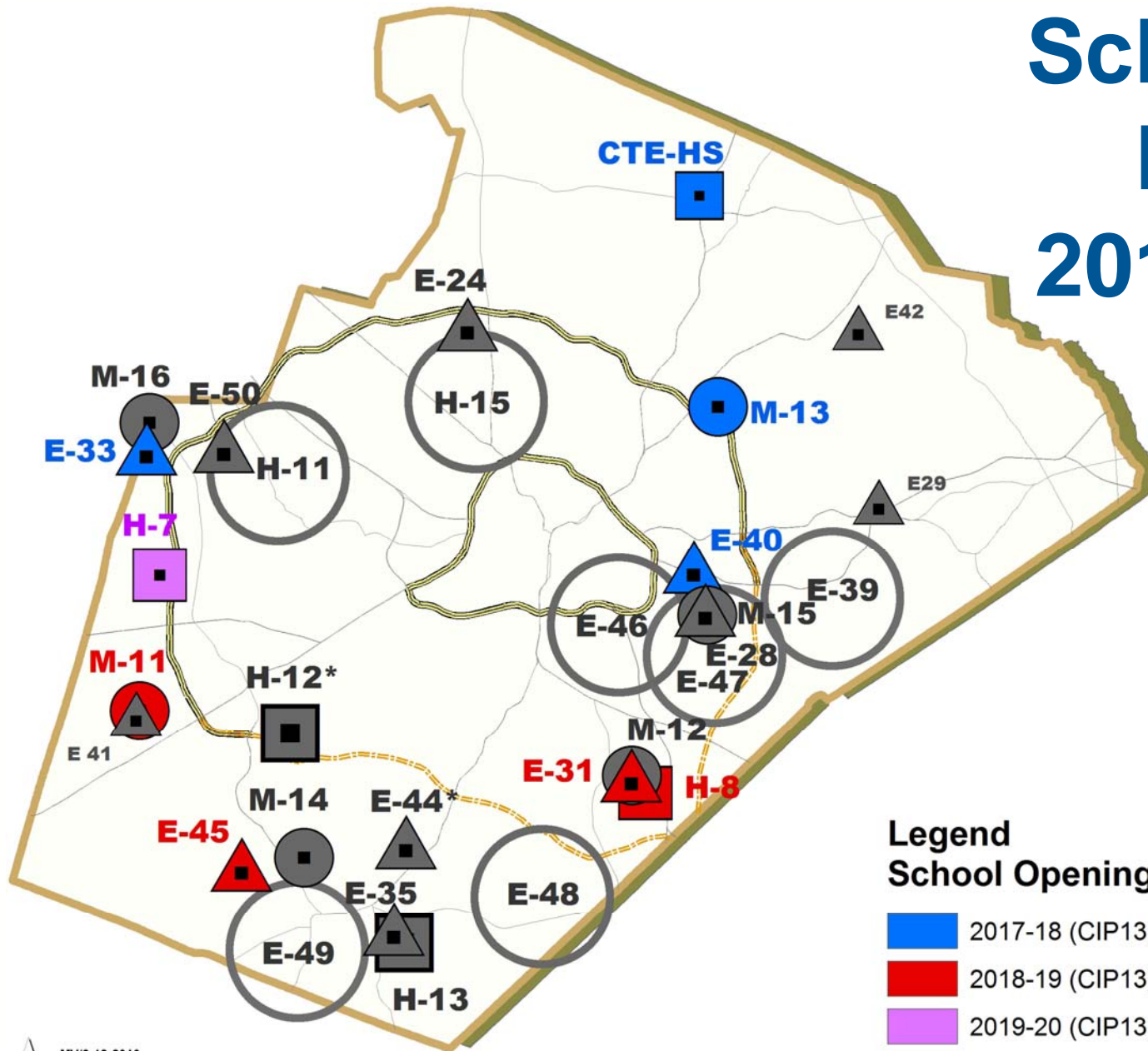
Apex Friendship HS (CIP 2006)
FLEX HS and CTE HS (SNAP Projects)

**2017-18
Year 3 of the 4-Year
Enrollment Plan**

**School Site Planning,
Future Funding = 14 schools
In addition:**

Four Schools (SNAP Projects)
2 CR = Community Responsive
2 ALP = Alternative Learning Program

School Site Planning 2017 - 2023



Legend School Openings

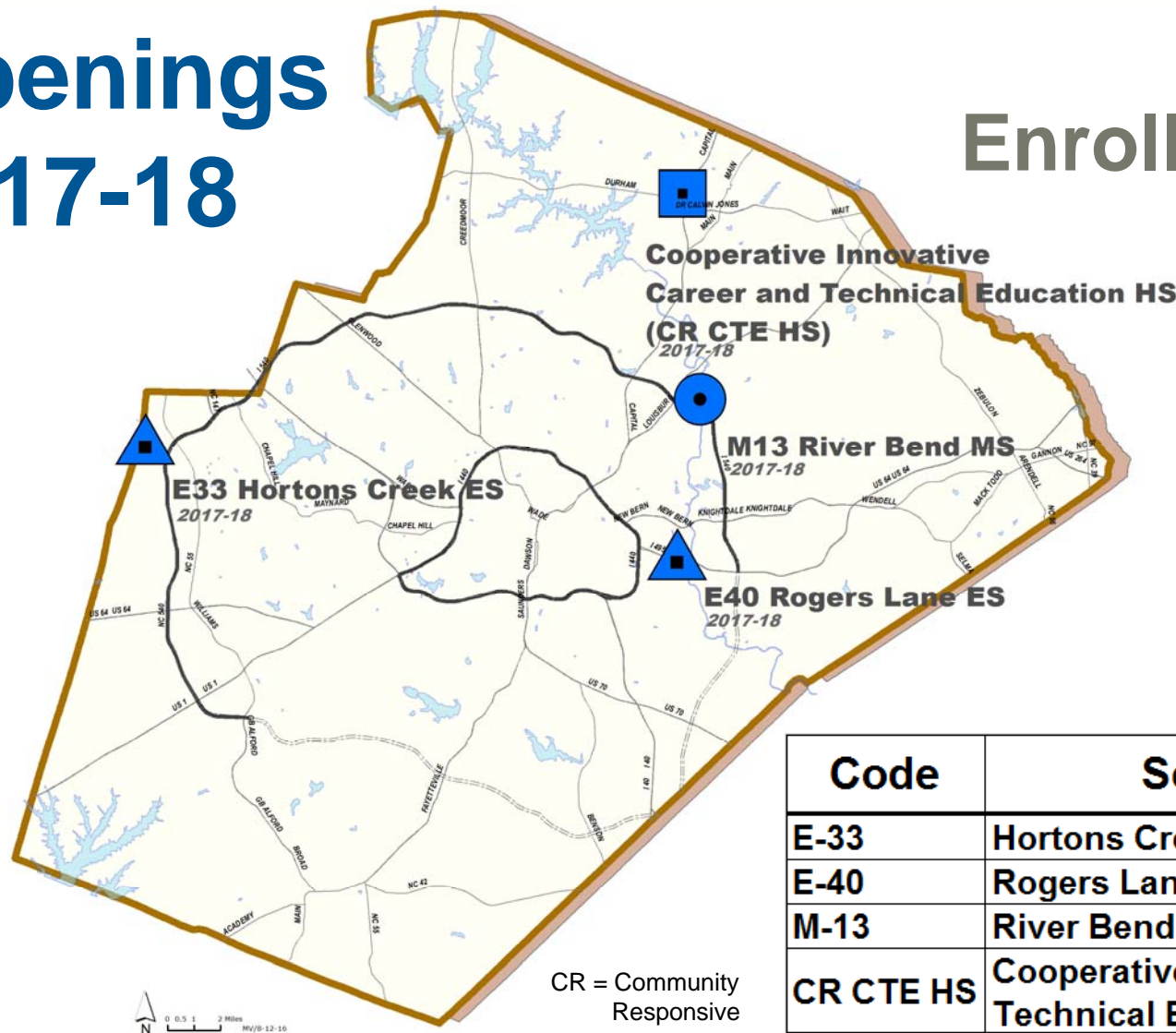
■	2017-18 (CIP13)
■	2018-19 (CIP13)
■	2019-20 (CIP13)
■	2019-23 (TBD)

* Under Contract

N
MV/8-12-2016
0 1 2 4 Miles

School Openings 2017-18

Year 3 of the Multi-Year Enrollment Plan



Code	School Name
E-33	Hortons Creek ES
E-40	Rogers Lane ES
M-13	River Bend MS
CR CTE HS	Cooperative Innovative Career and Technical Education (CTE) HS

Timeline of Enrollment Process

DATES	ACTIONS
May 17, 2016	BoE Work Session – review/discuss needs for 2017-18 enrollment plan, seek board input on direction
September 6, 2016	BoE Work Session – staff presents Draft 1 of the 2017-18 enrollment plan; begin feedback process through online forums
September, 2016	BoE Advisory Committees – staff presents Draft 1; solicits feedback
October, 2016	BoE Work Session – staff presents Draft 2 of the enrollment plan; continue to solicit feedback through online forums
October, 2016	Community meetings – staff presents Draft 2; solicits feedback
Nov / Dec, 2016	BoE Work Session – staff presents Draft 3/Final of the 2017-18 enrollment plan
Nov / Dec, 2016	Public Hearing BoE Work Session BoE approval of 2017-18 Enrollment Plan

WCPSS Board Policy 4100

Student Assignment

- A. Student Achievement**
- B. Stability**
- C. Proximity**
- D. Operational Efficiency**

Note: More detailed information is included in Addendum

Base Attendance Area Scenarios

Base attendance areas for new schools are generated by an **optimization engine** created by the Operations Research and Education Laboratory (OREd) at ITRE/ NCSU. Optimization allows many factors to be considered when determining base attendance areas, such as factors in WCPSS Policy 4100:

- *Stability - Minimizing the number of families impacted by assignment changes. In the optimization process, this can mean minimizing the number of existing schools used in the optimization engine. The combined bases for the existing schools is known as the “impact area”.*
- Proximity to School
- Building Utilization
- Anticipated Growth
- Impact of Future Base Attendance Areas (Long-term Stability)

Optimal Base Attendance Areas are only the first step in the enrollment planning process.

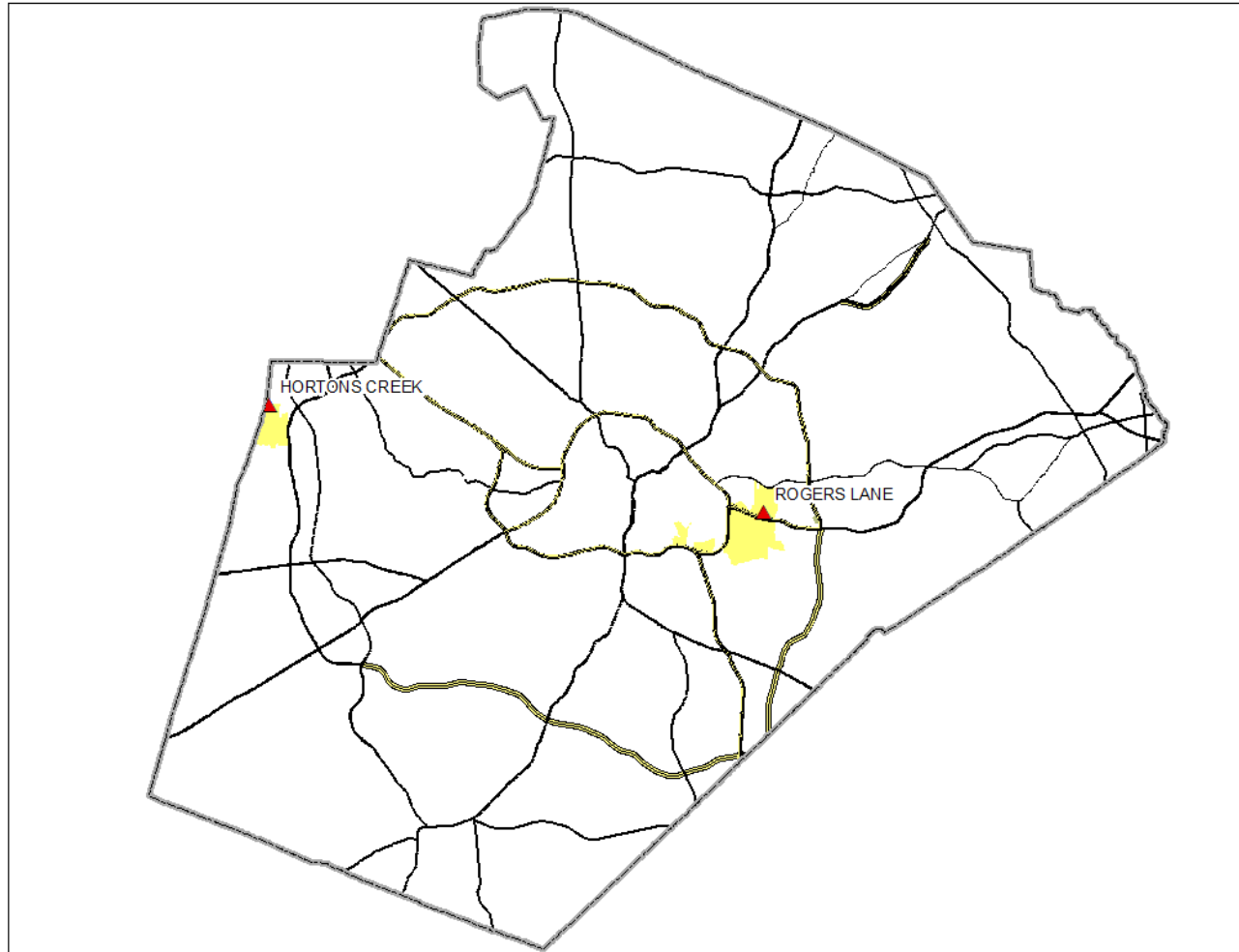
The Review Process

Base Attendance Areas are reviewed and edited considering:

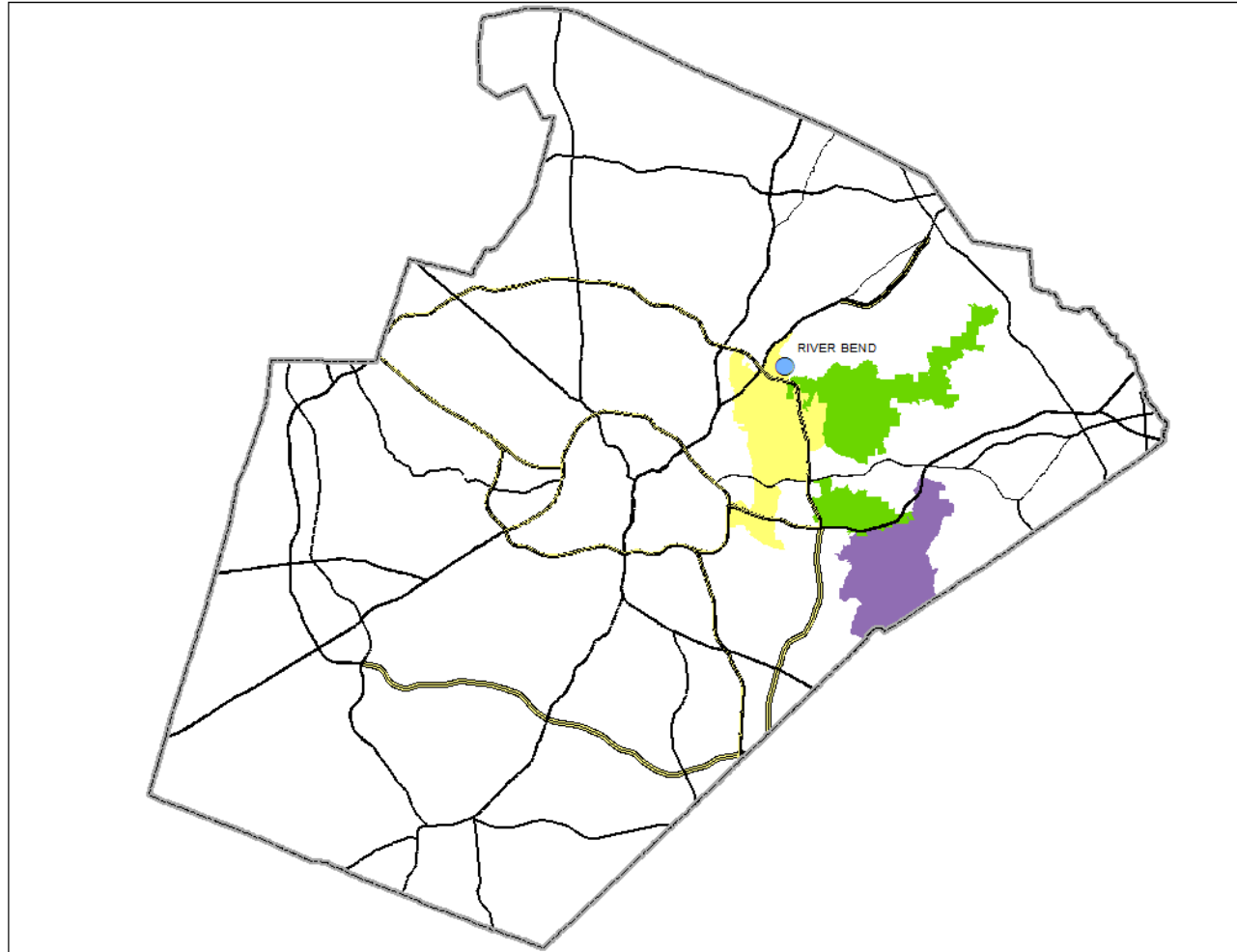
- Stability *
- Transportation/accessibility issues
- Achievement data
- Preserving neighborhoods
- Natural or man-made geographical limitations
- Alignment of Elementary > Middle calendar

** Stability is considered in the review process when proximity-driven assignment changes have a small net result or equal net result in number of students.*

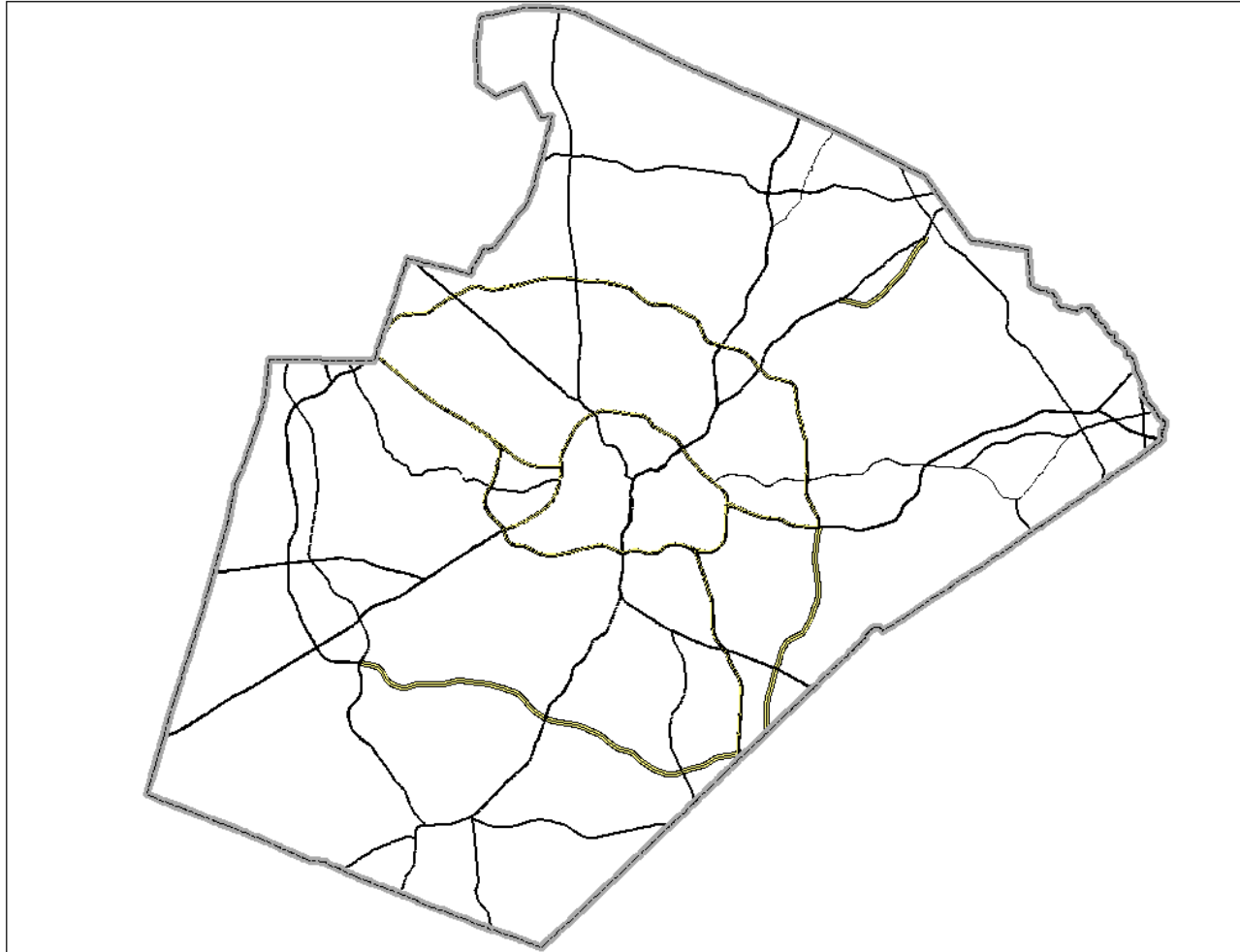
District-Wide Impact – Elementary Schools



District-Wide Impact – Middle Schools



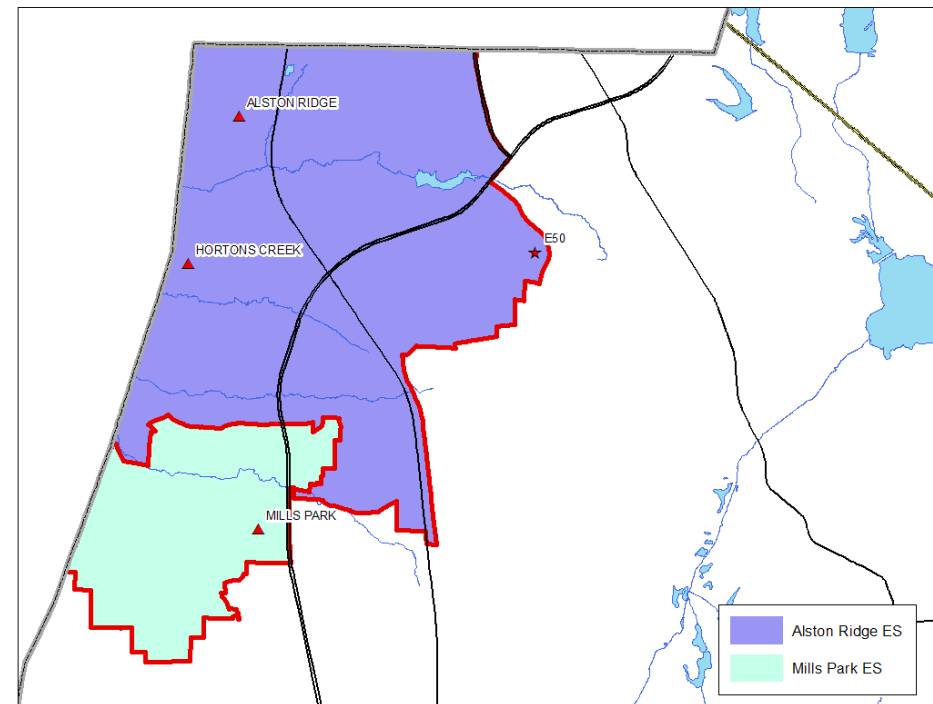
District-Wide Impact – High Schools



New School – Hortons Creek ES (2017-18)

- Traditional Calendar
- Calendar Option:
 - Alston Ridge ES
- Planned Capacity: 780
- Impact Area

2016-17 Base Areas



RED = 2016-17 Base Boundary

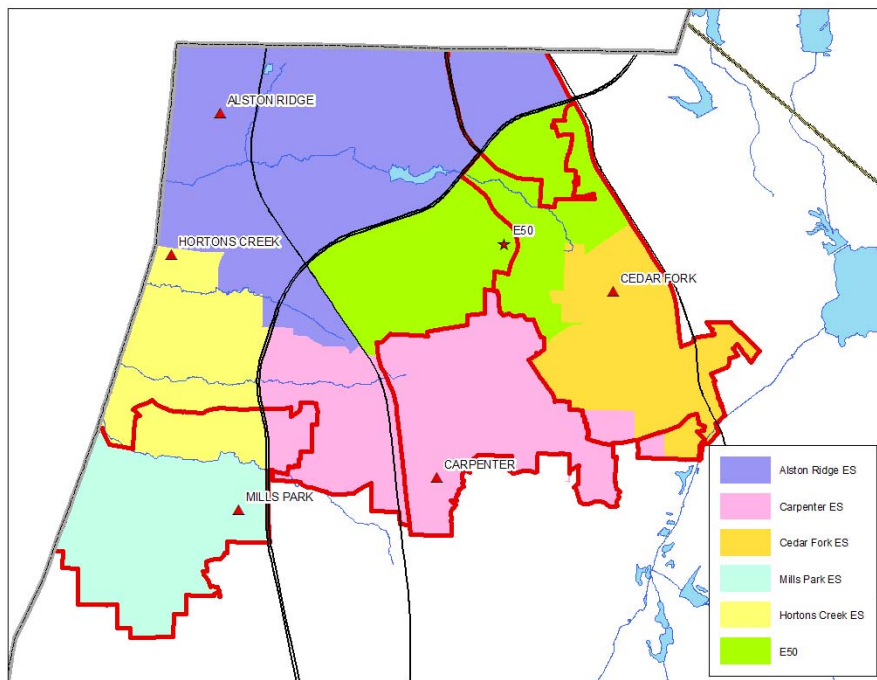
Utilization	School Cal	2015-16 ADM	2016-17 SPR	2016-17 BPR
Alston Ridge ES	Y-R	88%	101%	152%
Mills Park ES	TR	113%	118%	139%

Utilization based on 2016-17 Planned Capacity and:

- 2015-16 Month-2 Average Daily Membership (ADM)
 - 7/19/16 School Population Report (SPR)
 - 7/19/16 Base Population Report (BPR)
- Y-R - Year-Round Calendar, All Tracks (1-4)
Y-R,T4 - Year-Round Calendar, Track 4 Only
TR – Traditional Calendar

E-50 and M-16 (2019-20)

With proposed E-50 (2019-20)

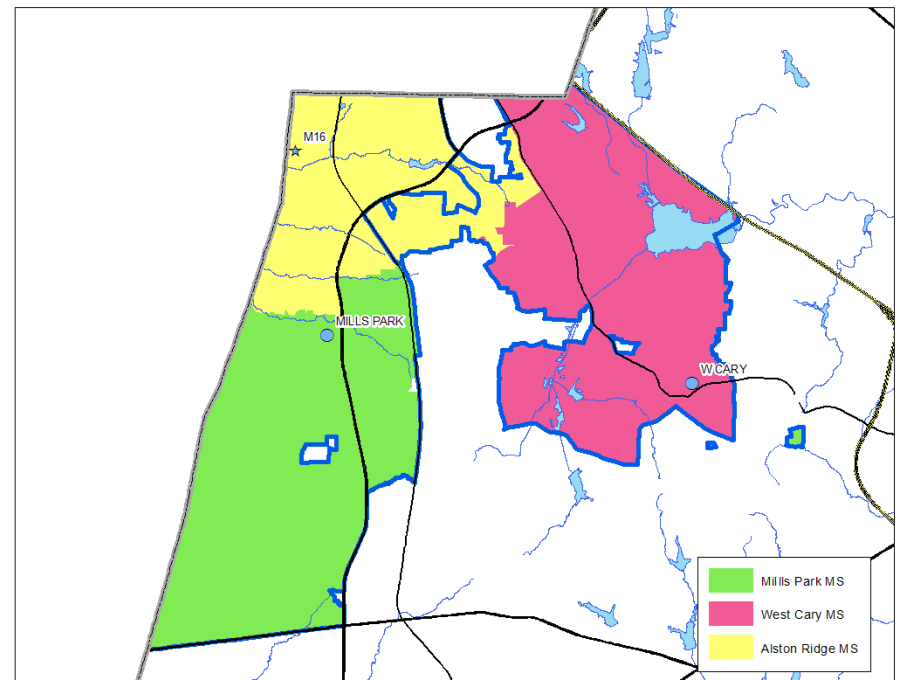


RED = 2016-17 Base Boundary

Proposed M-16 (Alston Ridge MS) base, impacting Mills Park MS and West Cary MS.

ES Feeders:

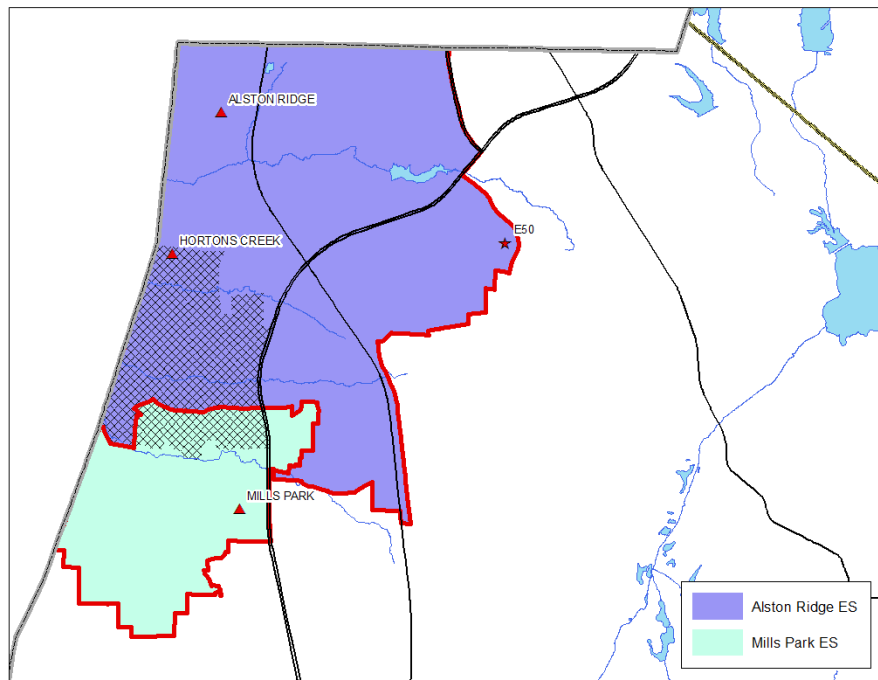
- Alston Ridge ES
- Hortons Creek ES
- E-50



BLUE = 2016-17 Base Boundary

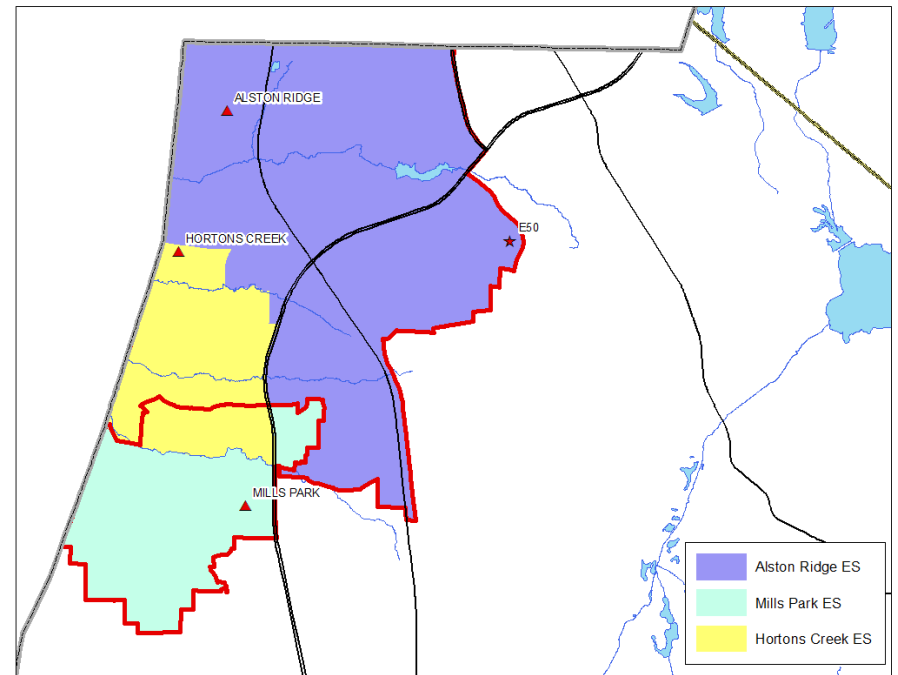
New School – Hortons Creek ES (2017-18)

Impacted Areas



Changed Area

Proposed 2017-18 Base Areas



RED = 2016-17 Base Boundary

NOTE: This base scenario considers the impact of opening of E-50, which will provide relief for Carpenter ES and Cedar Fork ES.

See Addendum for details.

Academic Proficiency Data

Academic Proficiency data has been included in each scenario, allowing a **before/after comparison** of assignment change.

Assumptions:

- 2014-15 EOG student reading proficiency
- Based on students residing in base

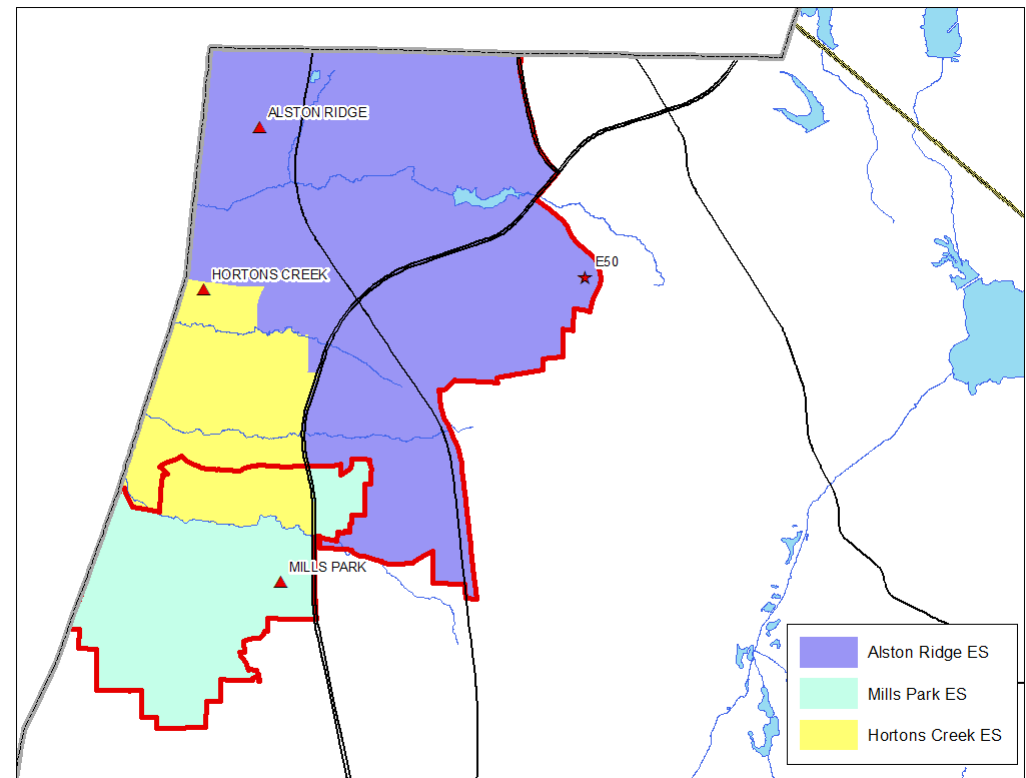
New School – Hortons Creek ES (2017-18)

Academic Proficiency

School	Actual * 2014-15	All Base Attends Base	
		Before	After
Alston Ridge ES	87%	85%	82%
Mills Park ES	87%	86%	88%
Hortons Creek ES			86%

See Addendum for details.

Proposed 2017-18 Base Areas



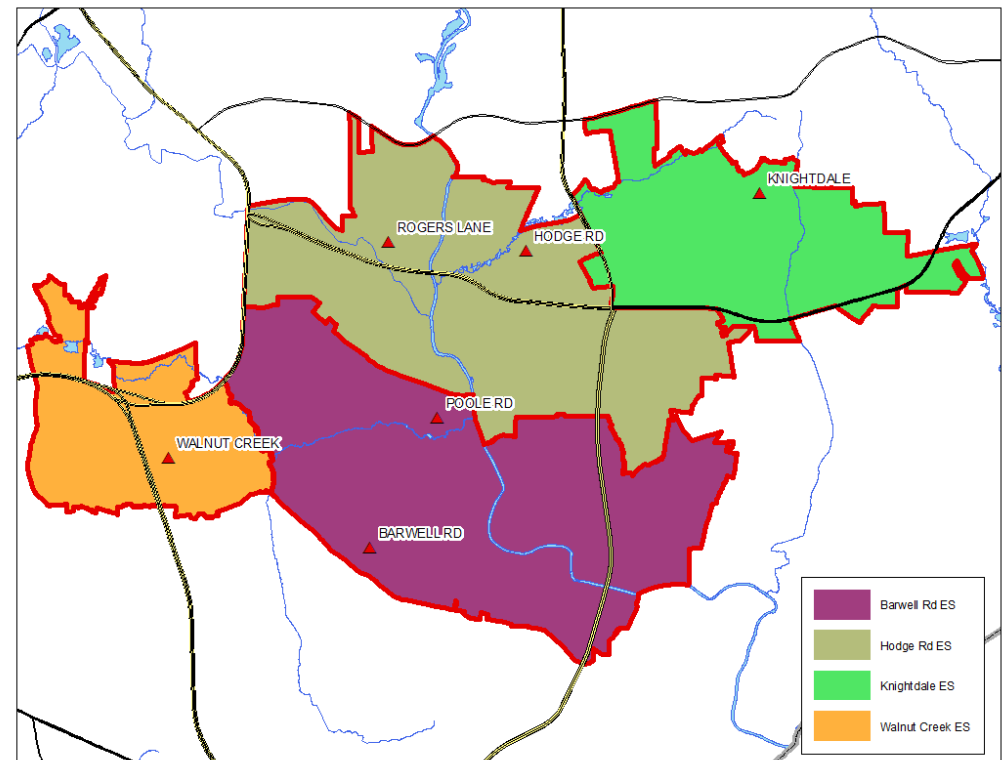
RED = 2016-17 Base Boundary

* 2014-15 Actual Proficiency – Reading, All Grades

New School – Rogers Lane ES (2017-18)

- Traditional Calendar
- Calendar Option:
 - Lake Myra ES
- Planned Capacity: 780
- Impact Area

2016-17 Base Areas



RED = 2016-17 Base Boundary

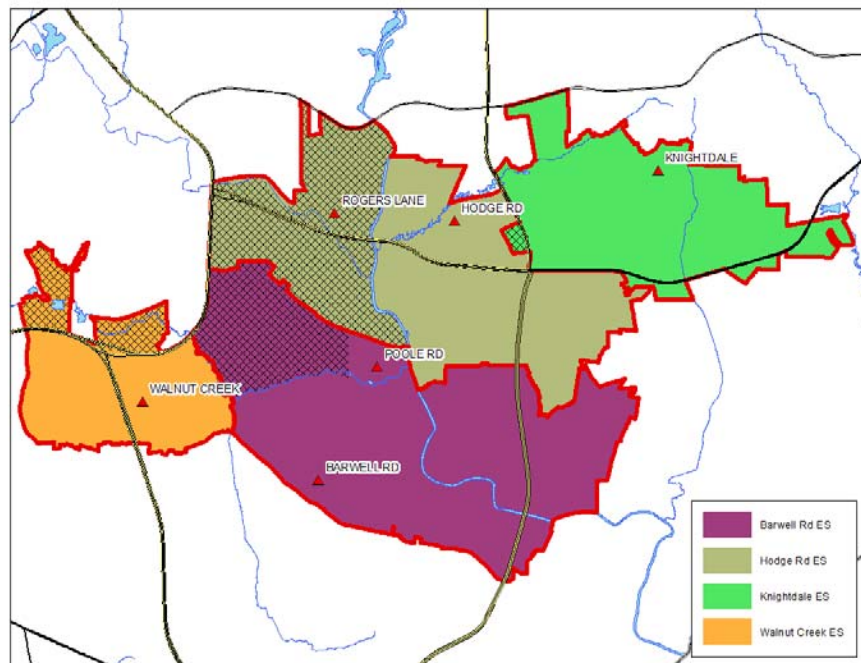
Utilization	School Cal	2015-16 ADM	2016-17 SPR	2016-17 BPR
Barwell Road ES	Y-R,T4	108%	104%	192%
Hodge Road ES	Y-R,T4	122%	121%	201%
Knightdale ES	TR	95%	92%	96%
Walnut Creek ES	Y-R,T4	106%	110%	163%

Utilization based on 2016-17 Planned Capacity and:

- 2015-16 Month-2 Average Daily Membership (ADM)
- 7/19/16 School Population Report (SPR)
- 7/19/16 Base Population Report (BPR)
- Y-R - Year-Round Calendar, All Tracks (1-4)
- Y-R,T4 - Year-Round Calendar, Track 4 Only
- TR – Traditional Calendar

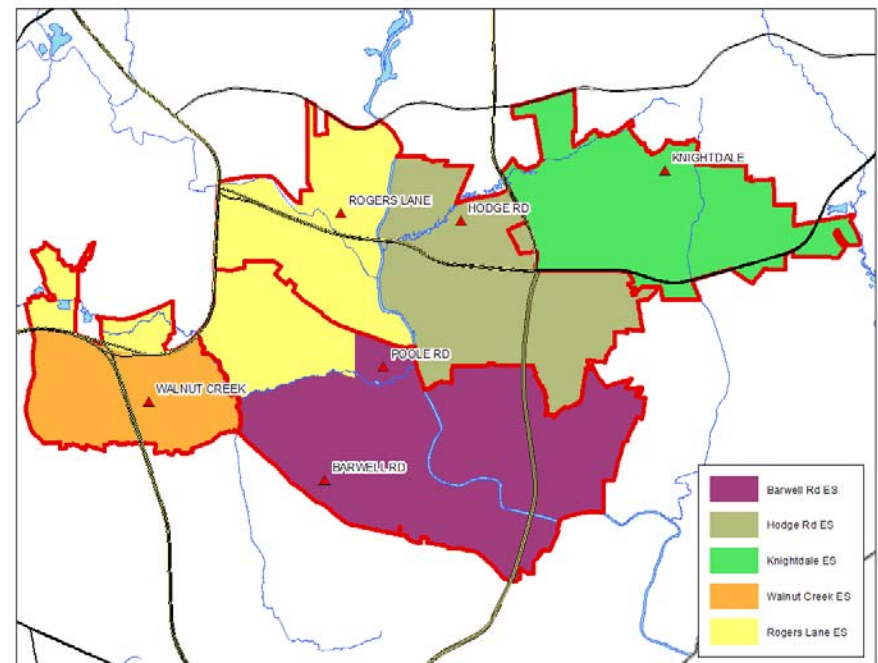
New School – Rogers Lane ES (2017-18)

Impacted Areas



Changed Area

Proposed 2017-18 Base Areas



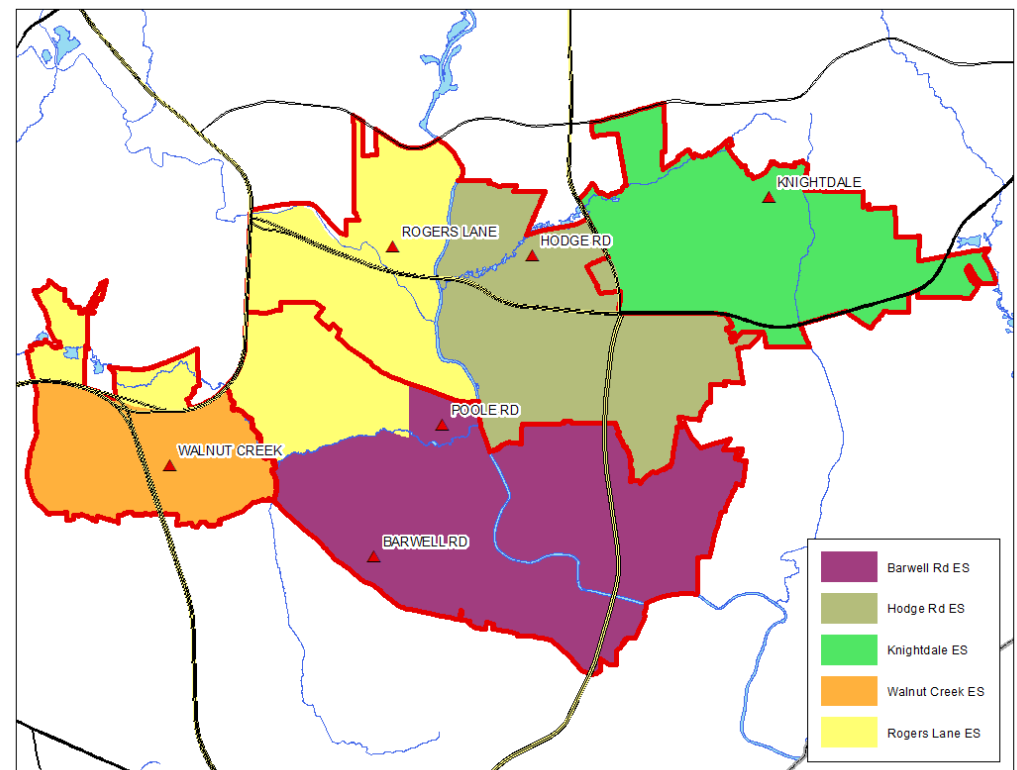
RED = 2016-17 Base Boundary

New School – Rogers Lane ES (2017-18)

Academic Proficiency

School	Actual * 2014-15	All Base Attends Base	
		Before	After
Barwell Road ES	38%	40%	42%
Hodge Road ES	32%	36%	36%
Knightdale ES	41%	40%	40%
Walnut Creek ES	45%	38%	39%
Rogers Lane ES			36%

Proposed 2017-18 Base Areas



RED = 2016-17 Base Boundary

See Addendum for details.

* 2014-15 Actual Proficiency – Reading, All Grades

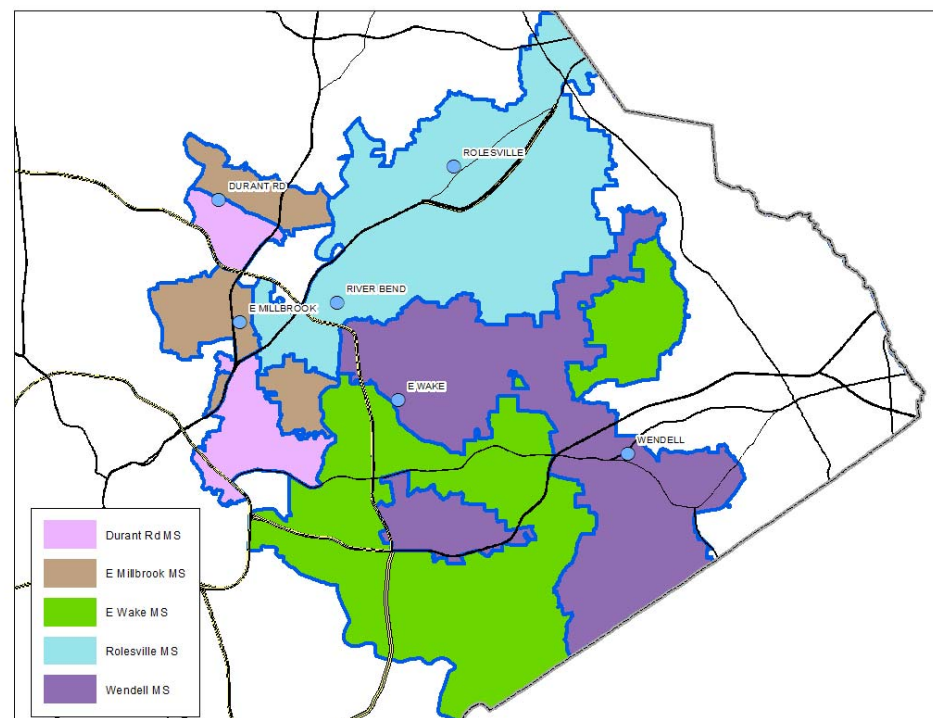
Related MS and HS Changes – 2017-18

- Hortons Creek ES – **No recommended changes** due to M-16 opening in 2019-20
- Rogers Lane ES – **Recommended changes** due to River Bend MS opening in 2017-18 (River Bend MS details on following slides)
- **No recommended HS changes**

New School – River Bend MS (2017-18)

- Traditional Calendar
- Calendar Option:
 - Rolesville MS
- Planned Capacity: 1,264
- Impact Area

2016-17 Base Areas



BLUE = 2016-17 Base Boundary

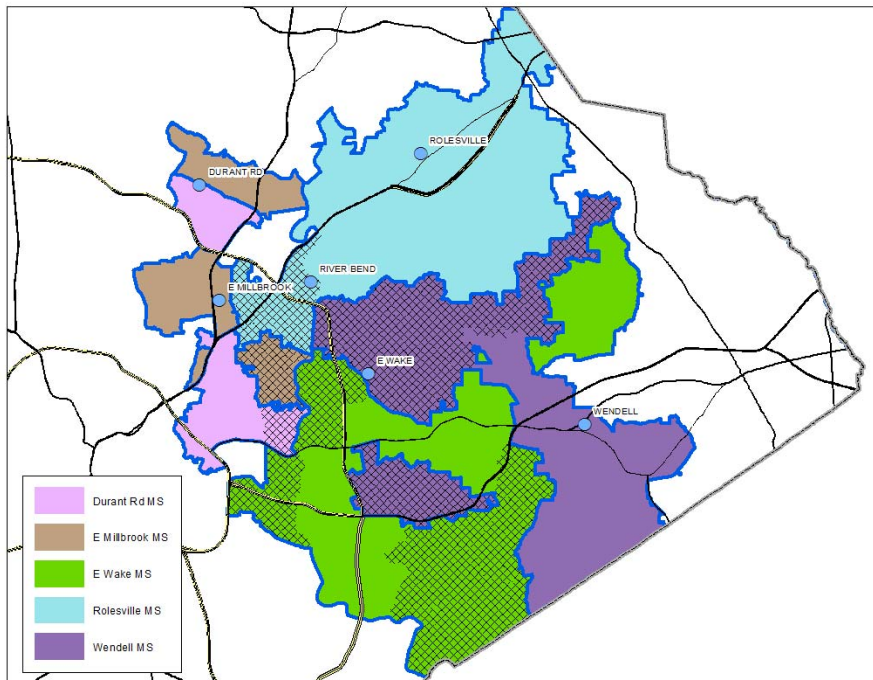
Utilization	School Cal	2015-16 ADM	2016-17 SPR	2016-17 BPR
Durant Rd MS	Y-R	98%	85%	75%
East Millbrook MS	TR	98%	103%	118%
East Wake MS	Y-R,T4	82%	86%	124%
Rolesville MS	Y-R	72%	77%	98%
Wendell MS	TR	96%	96%	106%


Utilization based on 2016-17 Planned Capacity and:

- 2015-16 Month-2 Average Daily Membership (ADM)
 - 7/19/16 School Population Report (SPR)
 - 7/19/16 Base Population Report (BPR)
- Y-R - Year-Round Calendar, All Tracks (1-4)
 Y-R,T4 - Year-Round Calendar, Track 4 Only
 TR – Traditional Calendar

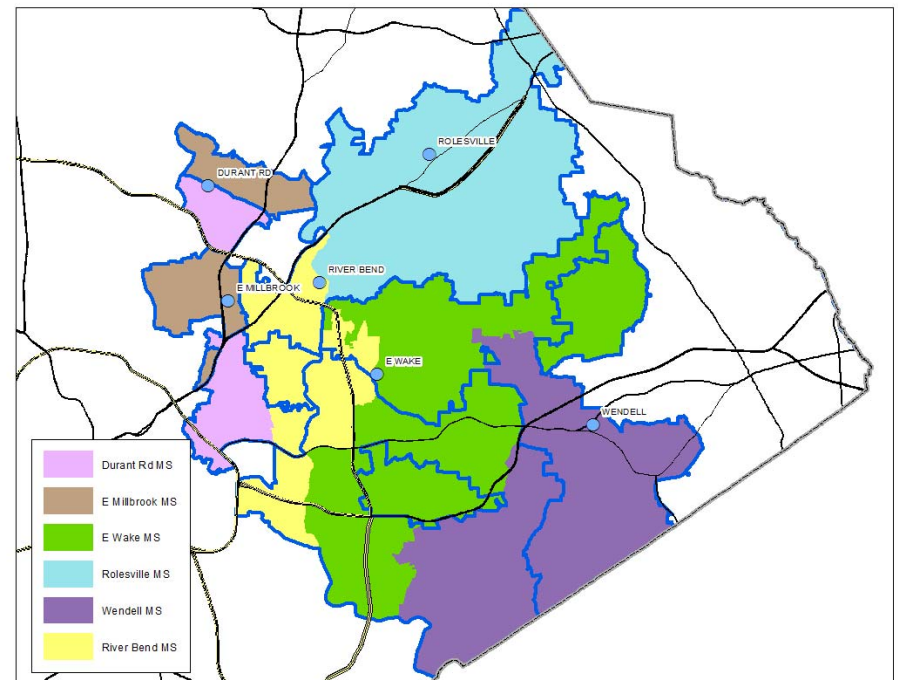
New School – River Bend MS (2017-18)

Impacted Areas



 Changed Area

Proposed 2017-18 Base Areas



BLUE = 2016-17 Base Boundary

New School – River Bend MS (2017-18)

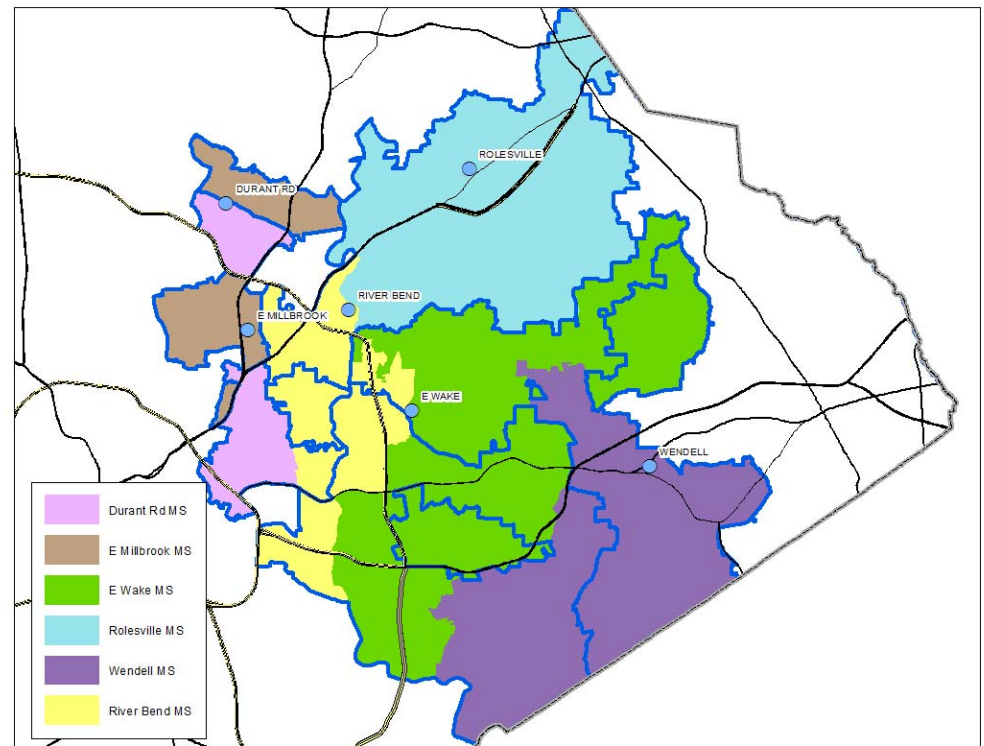
Academic Proficiency

School	Actual * 2014-15	All Base Attends Base	
		Before	After
Durant Rd MS	62%	50%	50%
East Millbrook MS	44%	48%	44%
East Wake MS	40%	42%	43%
Rolesville MS	62%	60%	66%
Wendell MS	42%	45%	47%
River Bend MS			46%

See Addendum for details.

* 2014-15 Actual Proficiency – Reading, All Grades

Proposed 2017-18 Base Areas



BLUE = 2016-17 Base Boundary

New School – River Bend MS (2017-18)

River Bend MS (Traditional Calendar) will receive:

- The entire base for Beaverdam ES (Traditional Calendar),
- River Bend ES (Year-Round Multi-track Calendar), and
- Part of Rogers Lane ES (Traditional Calendar).

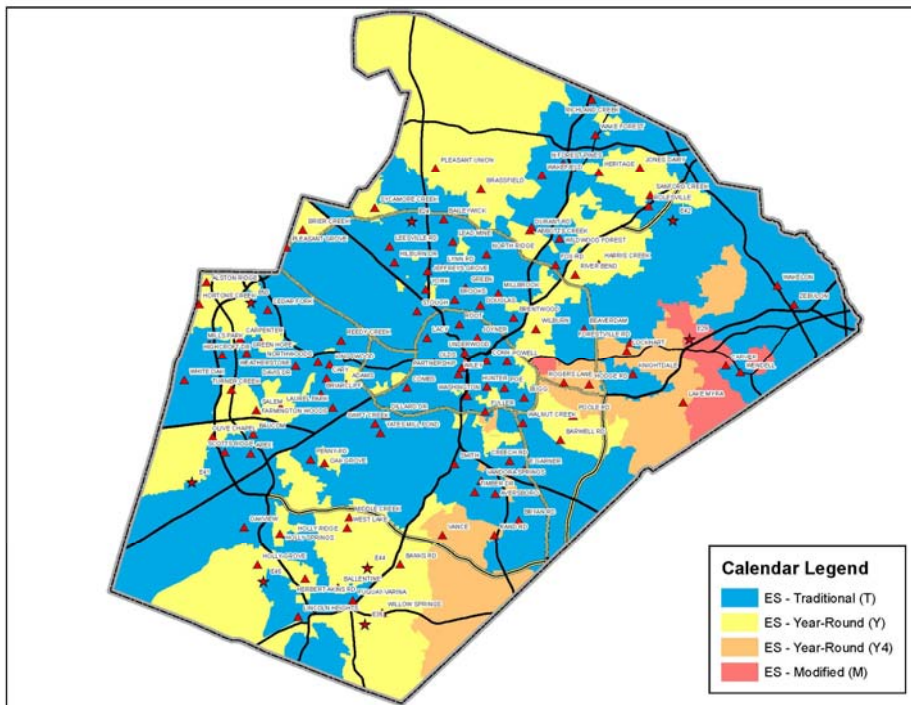
Recommendation:

To align calendars, staff recommends changing River Bend ES to Traditional Calendar.

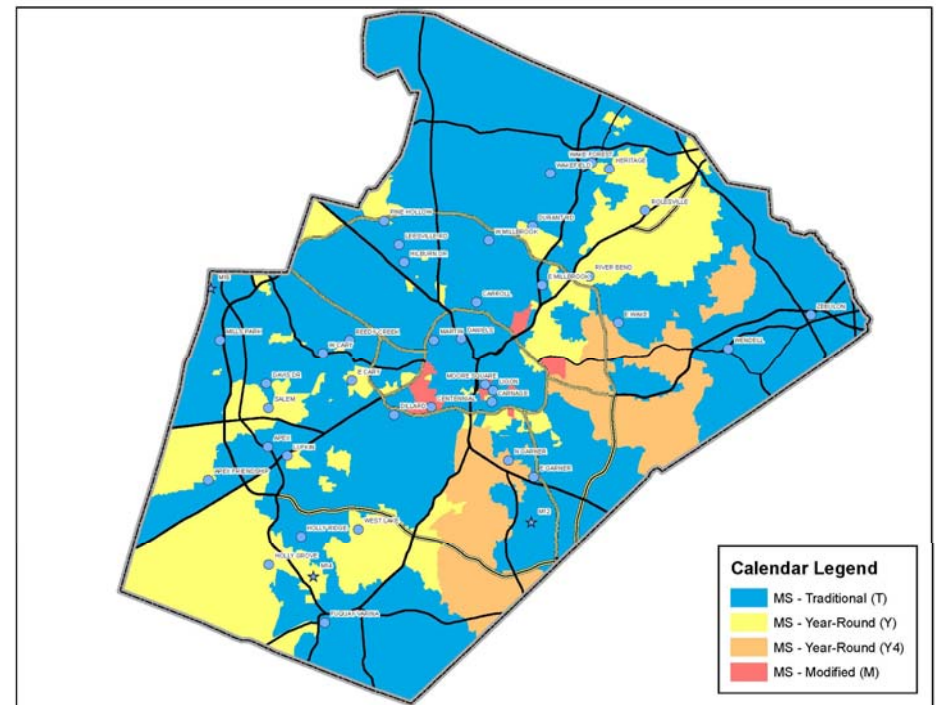
Year-Round Calendar Review / Discussion

2018-19 Review/Recommendation: Track-4 Schools

2019-20 Review/Recommendation: Multi-track Schools



Year-Round Elementary Schools



Year-Round Middle Schools

Operational Efficiency

Calendar Option Review, 2017-18

Satellite Base	Calendar 1	Total Cal 1	Calendar 2	Total Cal 2	Calendar 3	Total Cal 3
HARRIS CREEK ES	ROLESVILLE ES	0	WILDWOOD FOREST ES	0	BEAVERDAM ES	
KINGSWOOD ES	ADAMS ES	2	MORRISVILLE ES	0		
LAUREL PARK ES	PENNY RD ES	6	BAUCOM ES	0		
MIDDLE CREEK ES	SWIFT CREEK ES	47	YATES MILL ES	9		
MILLS PARK ES	TURNER CREEK ES	0	ALSTON RIDGE ES	0		
PENNY RD ES	ADAMS ES	1	OAK GROVE ES	1		
SALEM ES	BAUCOM ES	1	SCOTTS RIDGE ES	8		
SANFORD CREEK ES	ROLESVILLE ES	2	RICHLAND CREEK ES	7		
TIMBER DR ES	CREECH RD ES	35	EAST GARNER ES	5		
WILDWOOD FOREST ES	DURANT RD ES	4	RIVER BEND ES	1		
YATES MILL ES	ADAMS ES	0	OAK GROVE ES	1	TIMBER DR ES	14

This is a recommendation for the removal of the 2nd Calendar Choice for the Satellite areas only, not the whole base.

Base	Calendar 1	Total Cal 1	Calendar 2	Total Cal 2	Calendar 3	Total Cal 3
WILDWOOD FOREST ES	DURANT RD ES	46	*RIVER BEND ES	41		
RIVER BEND ES	HARRIS CREEK ES					

Note: If River Bend ES goes traditional, Wildwood Forest ES will have Durant Rd ES as the only Y-R option.

Operational Efficiency

Overcrowded Schools: Capped Schools, 2016-17

Elementary Schools	Original Capping Date
Cedar Fork ES	January 19, 2016
Davis Drive ES	January 19, 2016
Fuquay-Varina ES	January 19, 2016
Hodge Road ES	March 4, 2014
Hunter ES	December 12, 2012
Holly Grove ES	April 9, 2013
Mills Park ES	December 12, 2012
Walnut Creek ES	April 9, 2013
Wiley ES	January 19, 2016

Middle Schools	Original Capping Date
Apex MS	January 19, 2016
Mills Park MS	March 4, 2014

High Schools	Original Capping Date
Enloe HS	March 3, 2015
Fuquay-Varina HS	January 19, 2016
Heritage HS	January 20, 2015
Panther Creek HS	January 20, 2015

Operational Efficiency

Move from Conn ES to Underwood ES: -Not recommended for 2017-18

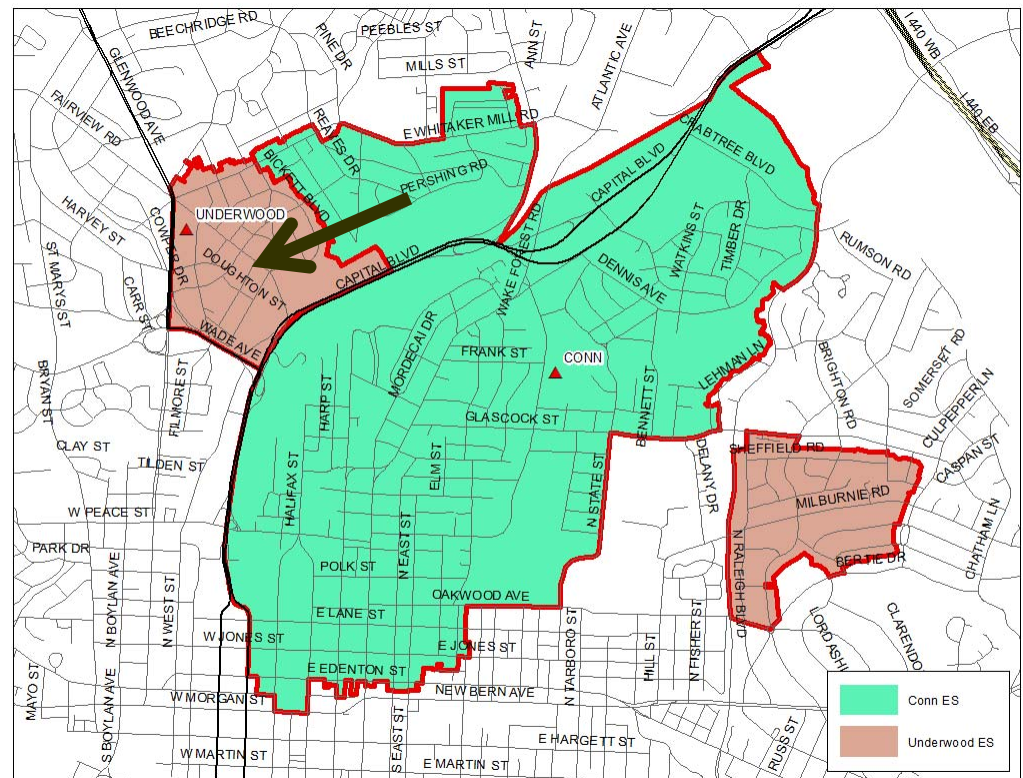
2016-17 Base Areas

- Conn ES
- Underwood ES

Utilization	School Cal	2015-16 ADM	2016-17 SPR	2016-17 BPR
Conn ES	TR	104%	102%	66%
Underwood ES	TR	109%	109%	43%

Utilization based on 2016-17 Planned Capacity and:

- 2015-16 Month-2 Average Daily Membership (ADM)
 - 7/19/16 School Population Report (SPR)
 - 7/19/16 Base Population Report (BPR)
- Y-R - Year-Round Calendar, All Tracks (1-4)
Y-R,T4 - Year-Round Calendar, Track 4 Only
TR – Traditional Calendar



RED = 2016-17 Base Boundary

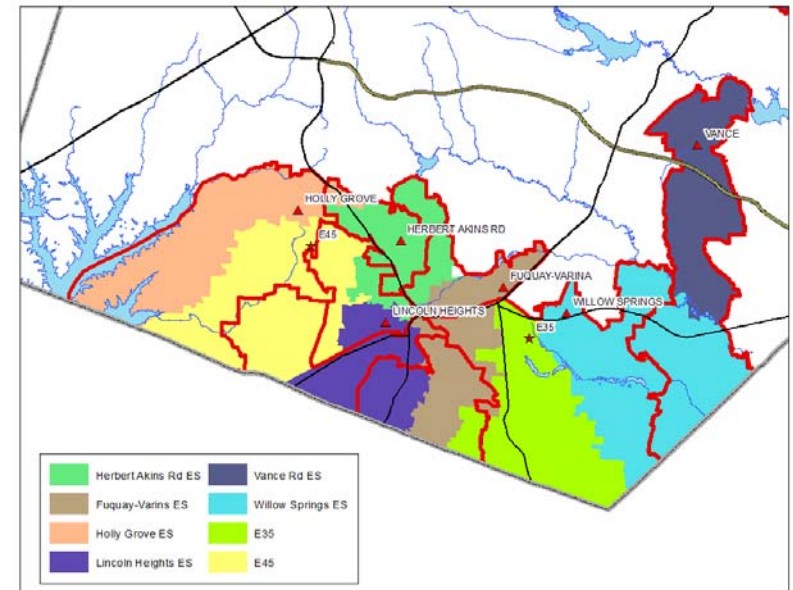
Operational Efficiency – Lincoln Heights ES

- Balance utilization of southern elementary schools
- “Two-phase” assignment plan
- Consider opening of E-45 (2018-19), and E-35 (TBD).

Utilization	School Cal	2015-16 ADM	2016-17 SPR	2016-17 BPR
Herbert Akins ES	Y-R	102%	99%	94%
Fuquay-Varina ES	TR	152%	151%	181%
Holly Grove ES	Y-R	117%	113%	108%
Lincoln Heights ES	TR	71%	72%	70%
Willow Springs ES	Y-R	139%	145%	150%

Utilization based on 2016-17 Planned Capacity and:

- 2015-16 Month-2 Average Daily Membership (ADM)
 - 7/19/16 School Population Report (SPR)
 - 7/19/16 Base Population Report (BPR)
- Y-R - Year-Round Calendar, All Tracks (1-4)
Y-R,T4 - Year-Round Calendar, Track 4 Only
TR – Traditional Calendar



Grandfathering

No District Transportation Provided

Board Policy 4100

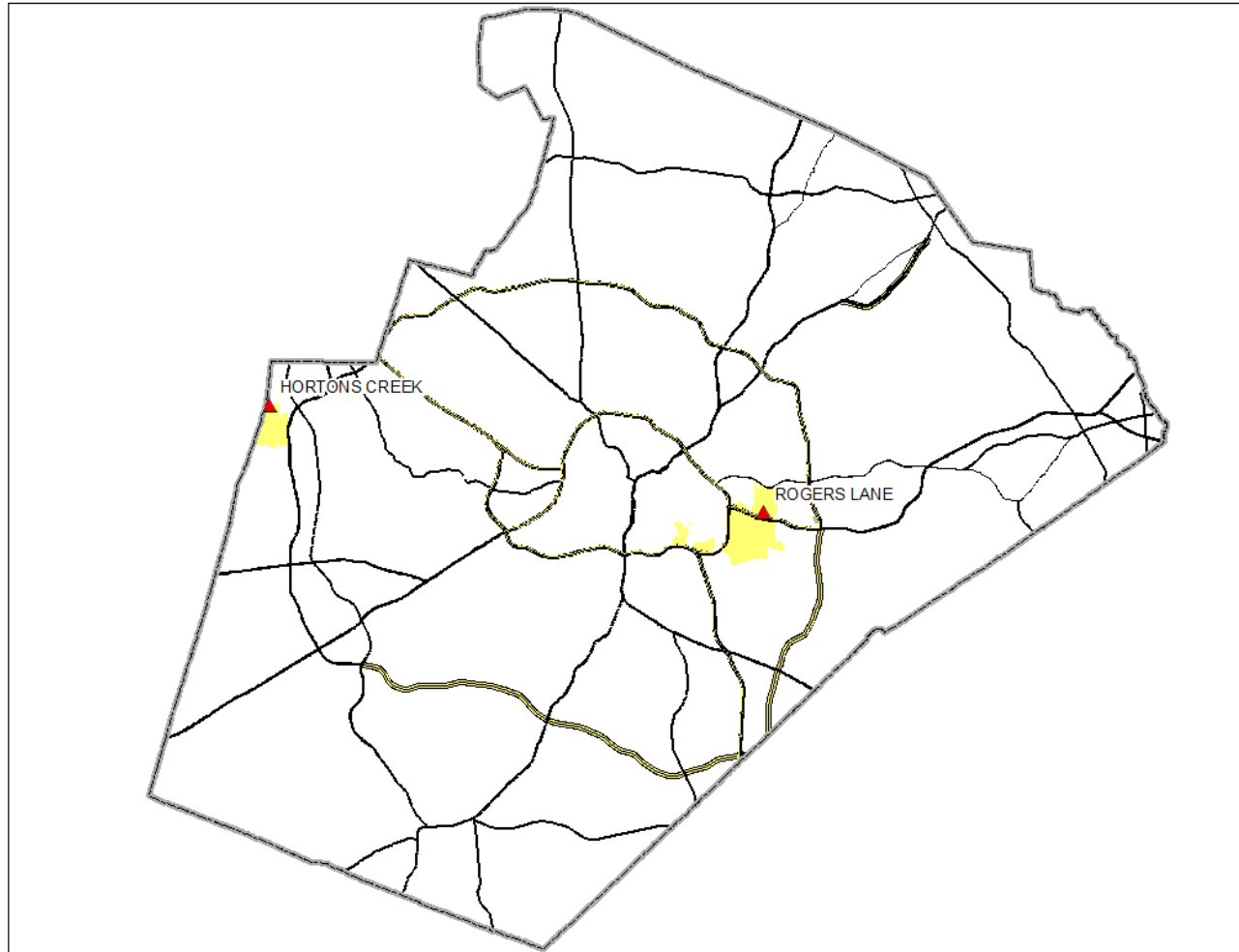
- Students will have the opportunity to stay at the same school with their siblings through the exit grade without experiencing involuntary changes in school assignment.
- **However**, when assignments are necessary for the opening of a new school this may not be guaranteed, and **no transportation will be provided**.

Grandfathering, Cont.

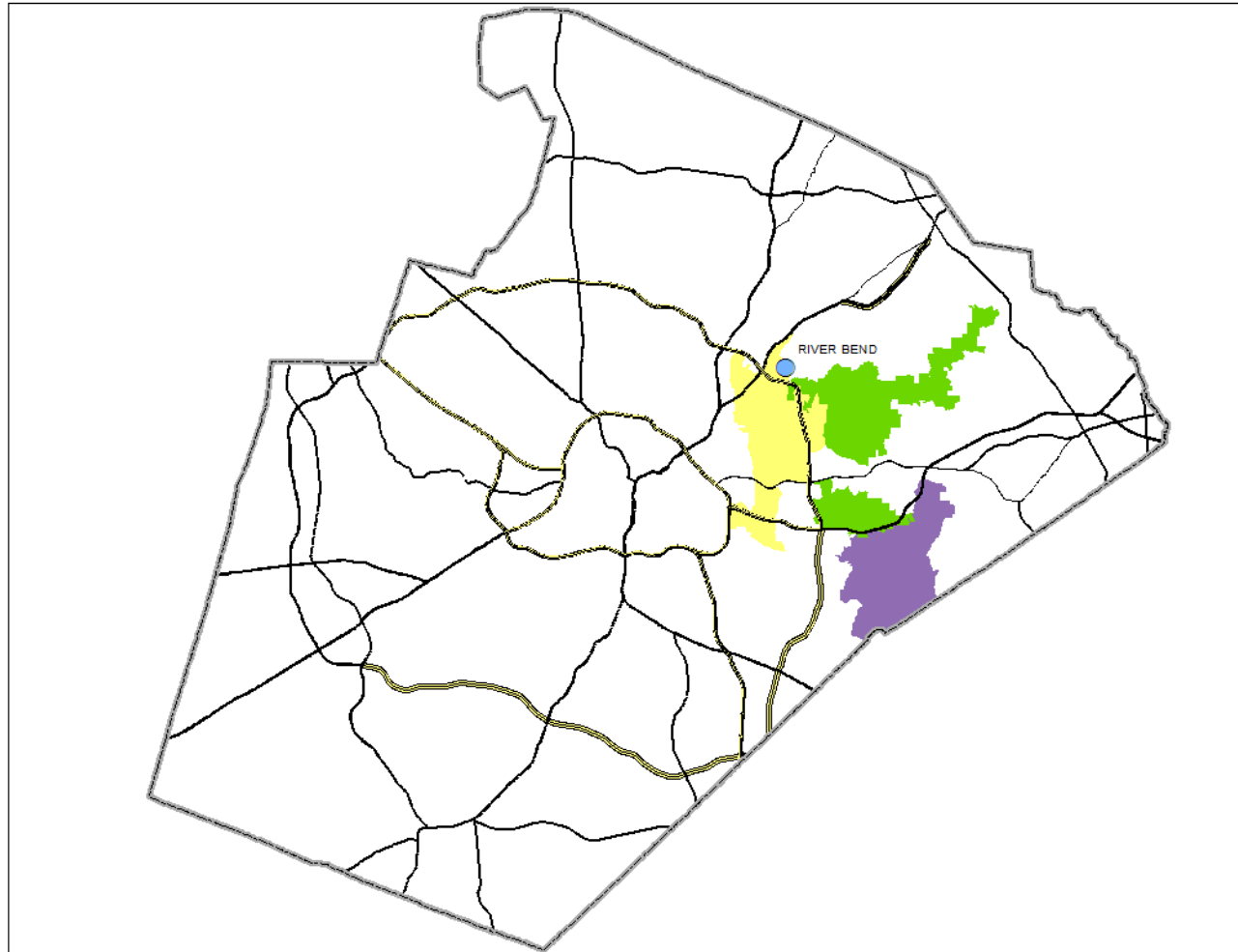
No District Transportation Provided

- For any student who experiences an assignment change as a result of this proposal **from an existing school to an existing school**, all students are eligible to request a **transfer** to “grandfather” at their current assignment. These requests will be approved.
- Siblings of these “grandfathered” students can request a **transfer** to attend the same school with their sibling. These requests will be approved.
- Students who request to grandfather are **transfer** students and **no transportation will be provided**.

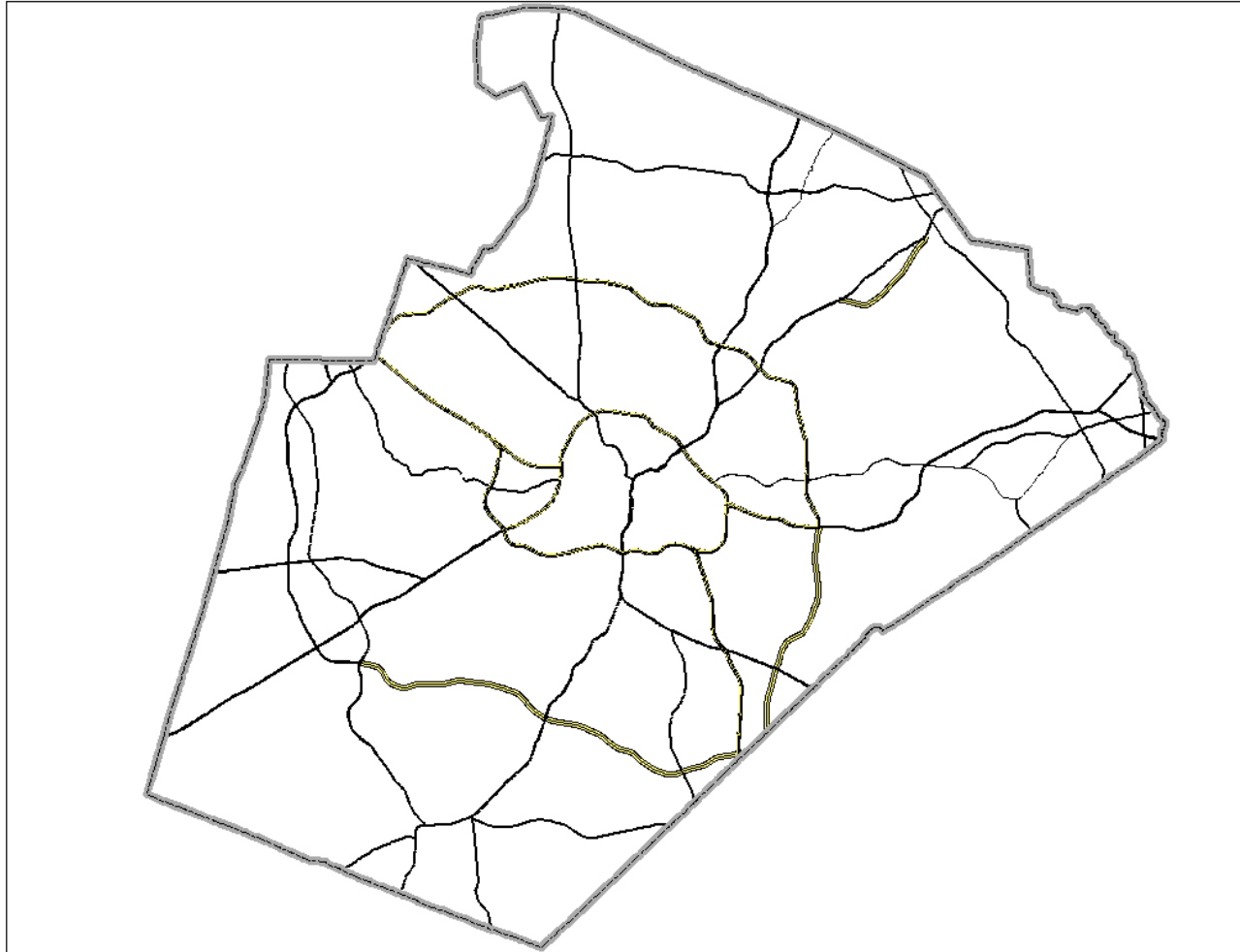
District-Wide Impact – Elementary Schools



District-Wide Impact – Middle Schools



District-Wide Impact – High Schools



Community Feedback

- An online feedback forum will launch on September 6 after the board presentation.
- Public information sessions about Draft 1 will be held at BAC meetings through September.
- Public information sessions about Draft 2 will be held in schools near affected areas.

Bookmark this page

<http://www.wcpss.net/enrollmentproposal>



Contains information, maps and links to address look-up tool and online forum.

Timeline of Enrollment Process

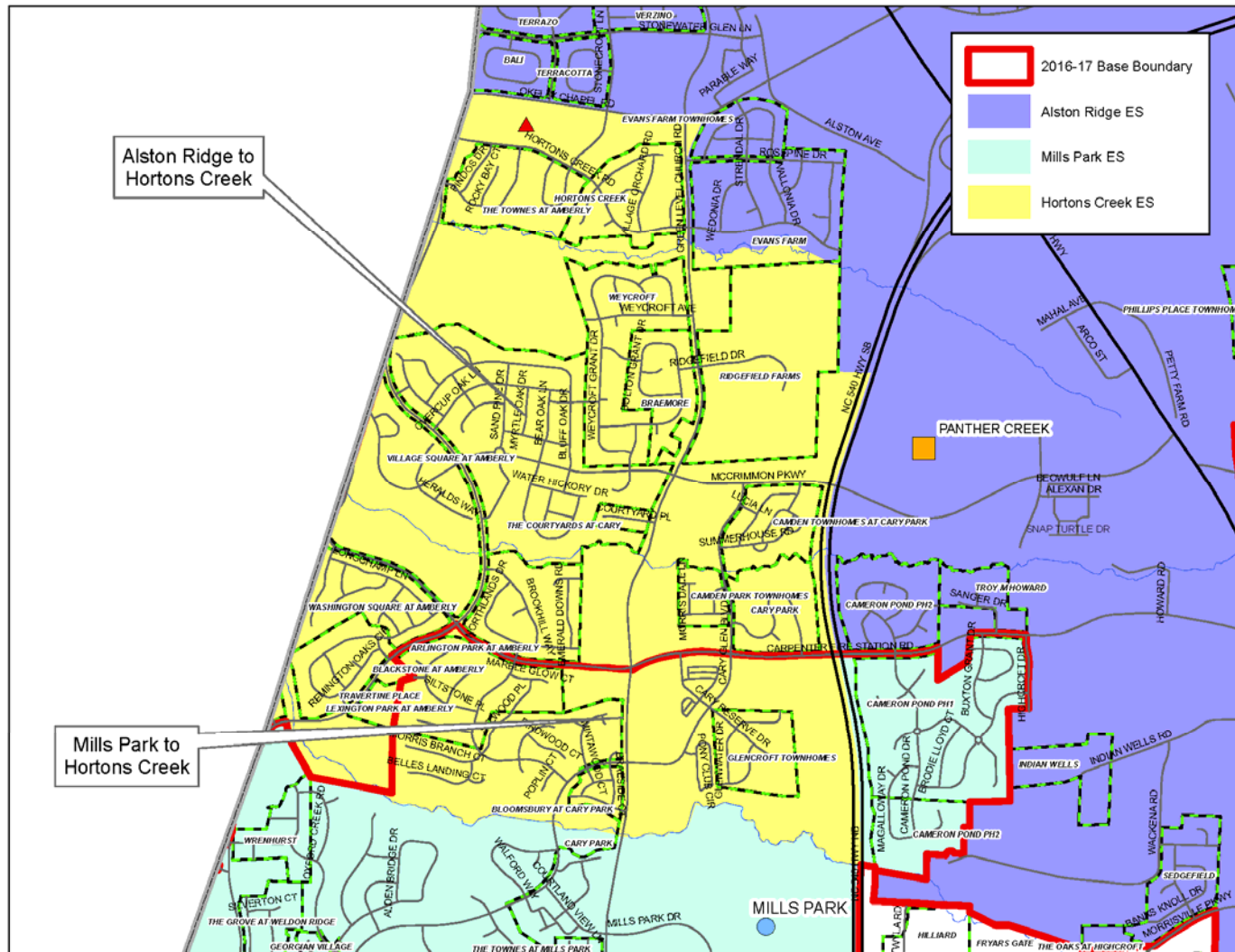
DATES	ACTIONS
May 17, 2016	BoE Work Session – review/discuss needs for 2017-18 enrollment plan, seek board input on direction
September 6, 2016	BoE Work Session – staff presents Draft 1 of the 2017-18 enrollment plan; begin feedback process through online forums
September, 2016	BoE Advisory Committees – staff presents Draft 1; solicits feedback
October, 2016	BoE Work Session – staff presents Draft 2 of the enrollment plan; continue to solicit feedback through online forums
October, 2016	Community meetings – staff presents Draft 2; solicits feedback
Nov / Dec, 2016	BoE Work Session – staff presents Draft 3/Final of the 2017-18 enrollment plan
Nov / Dec, 2016	Public Hearing BoE Work Session BoE approval of 2017-18 Enrollment Plan

Questions/Comments?

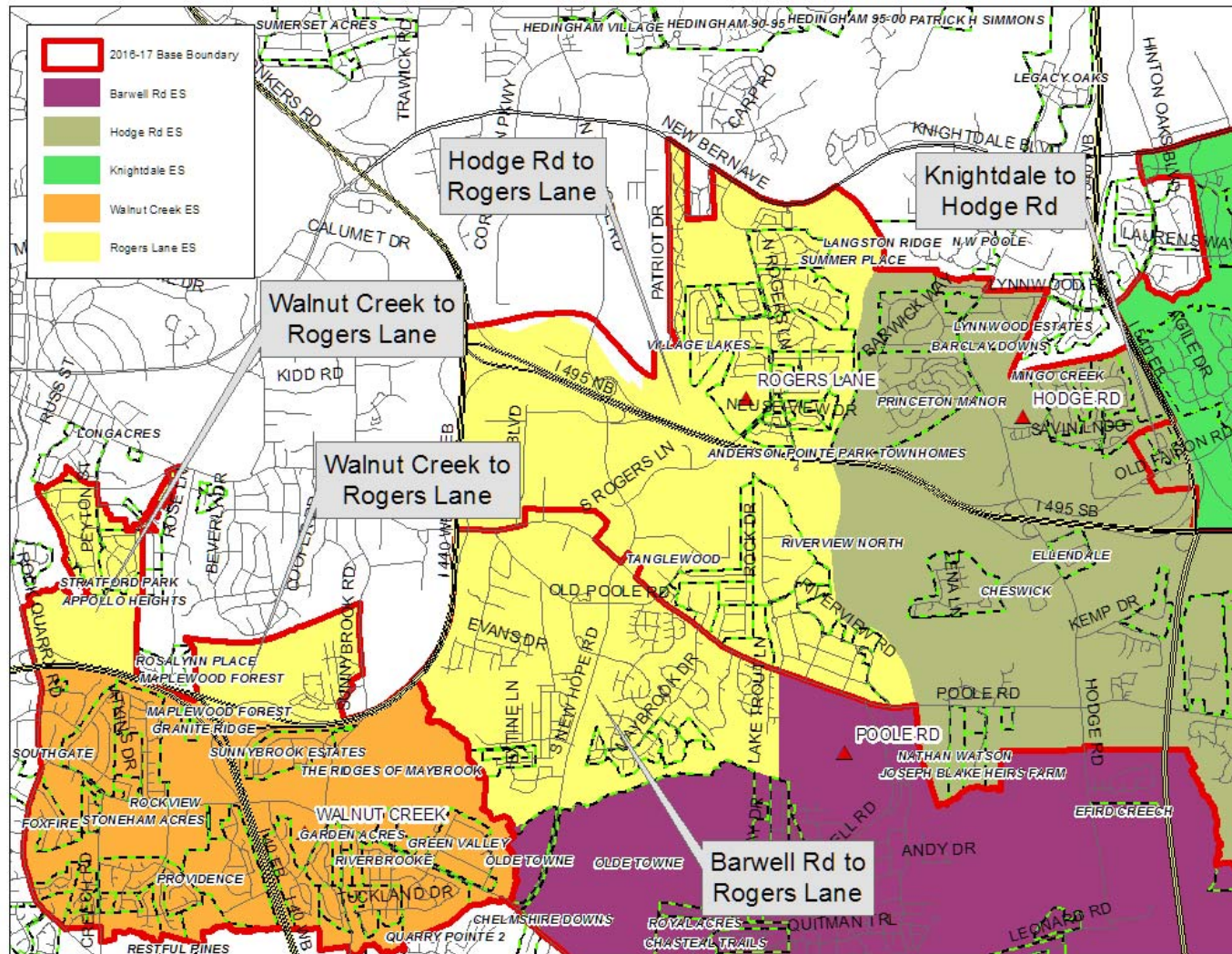
Addendum

- 2017-18 Base Details
- School Site Planning, Seven-Year Plan
- WCPSS Board Policy 4100 Details

2017-18 Base Detail – Hortons Creek ES

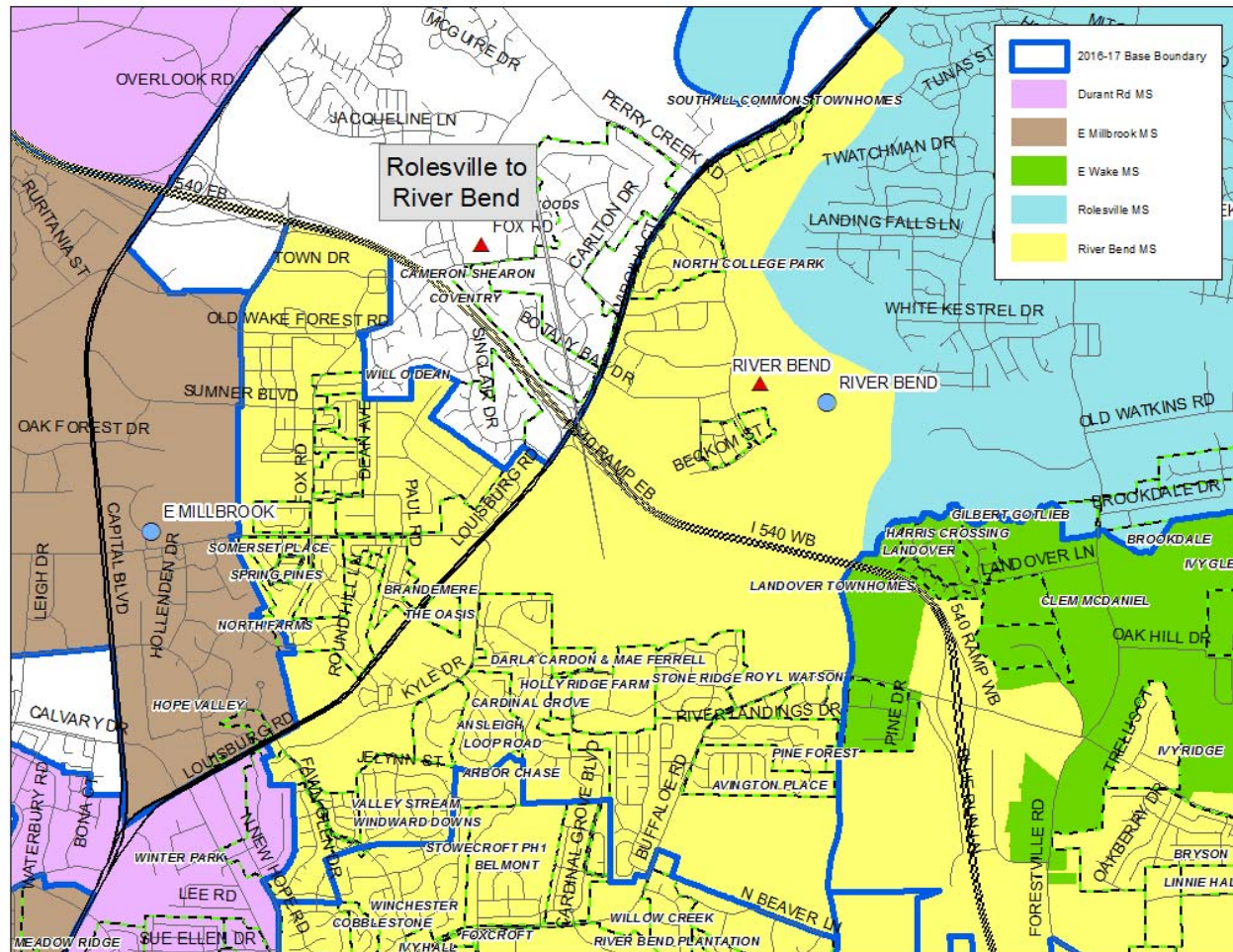


2017-18 Base Detail – Rogers Lane ES



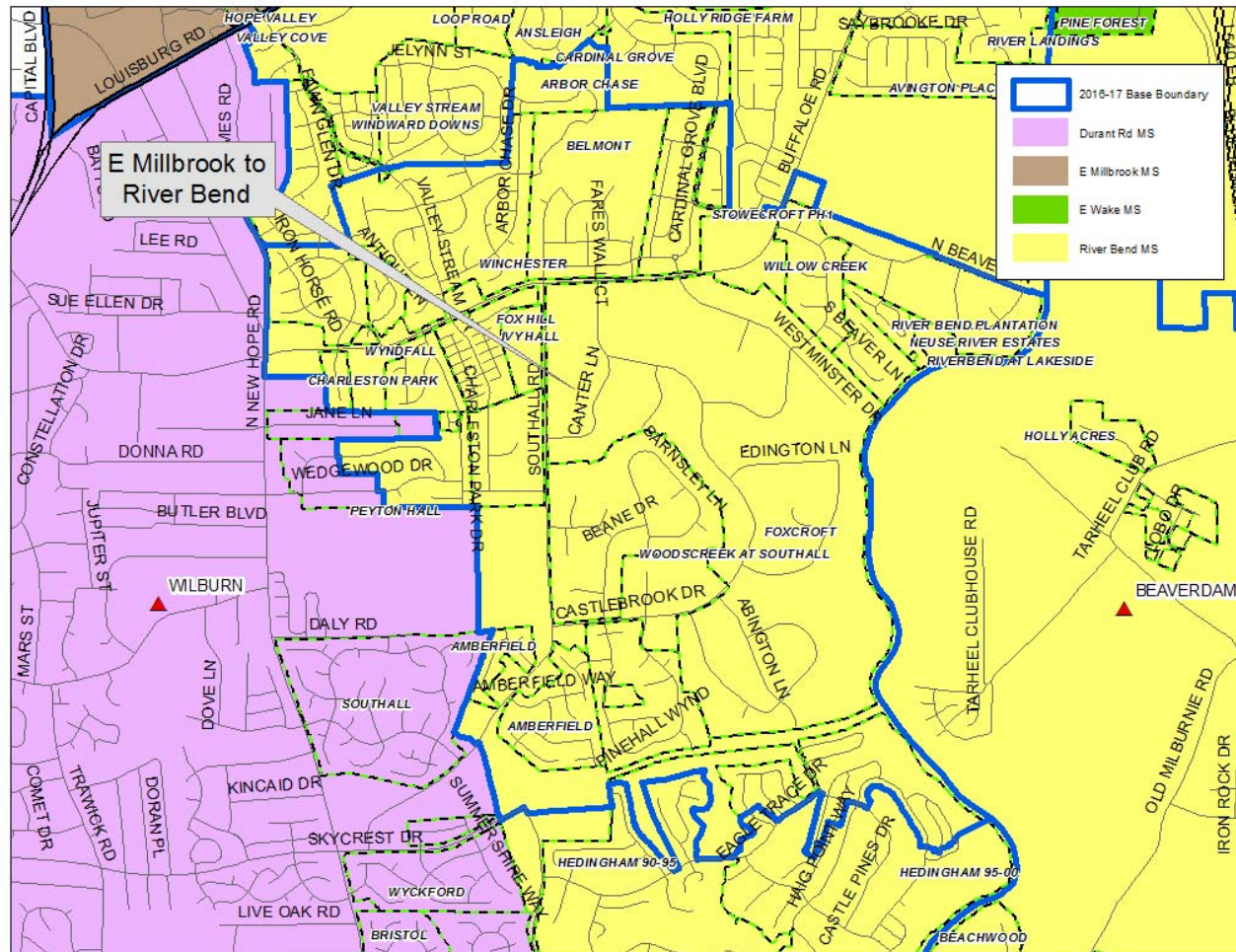
2017-18 Base Detail – River Bend MS (1 of 9)

Rolesville MS to River Bend MS



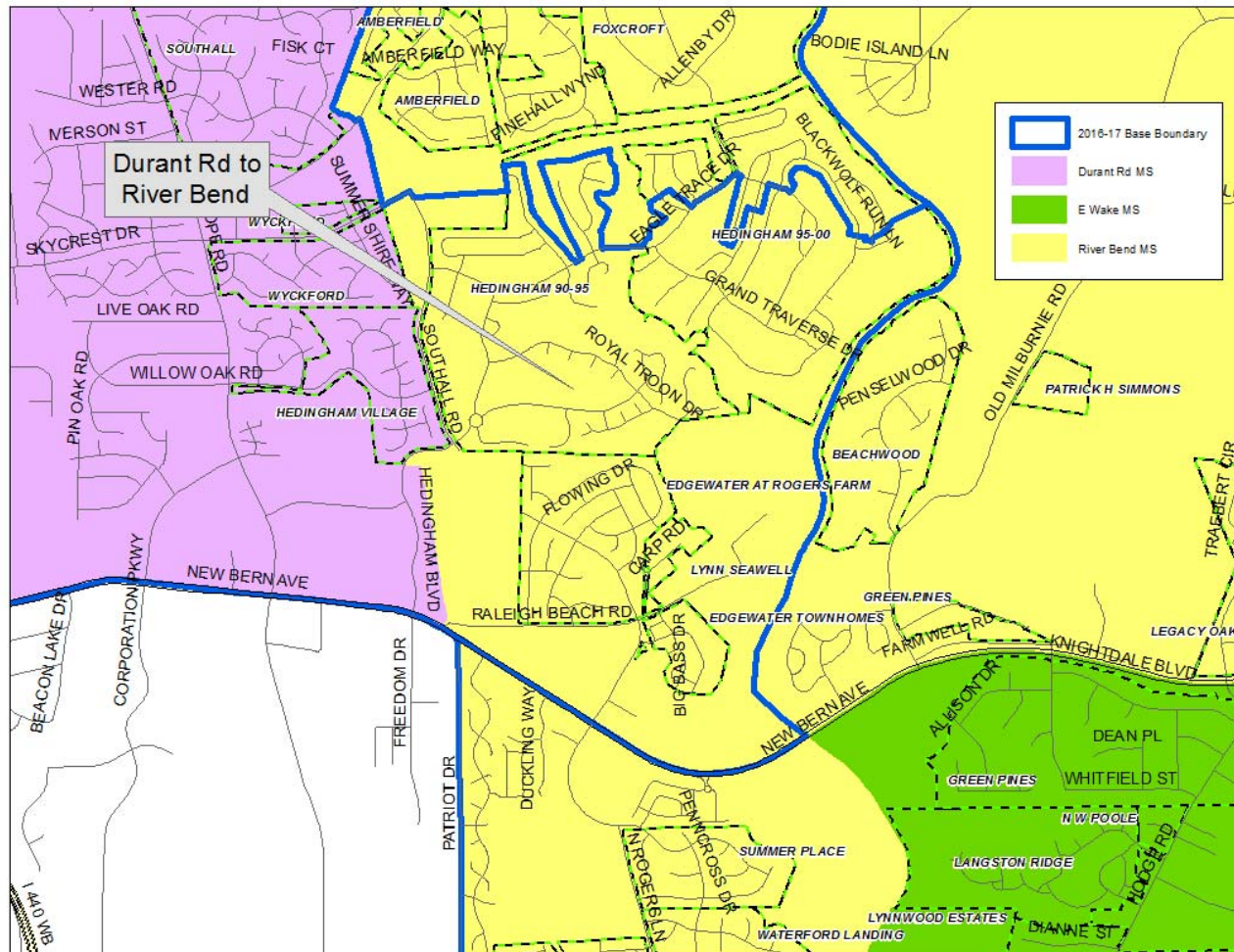
2017-18 Base Detail – River Bend MS (2 of 9)

East Millbrook MS to River Bend MS



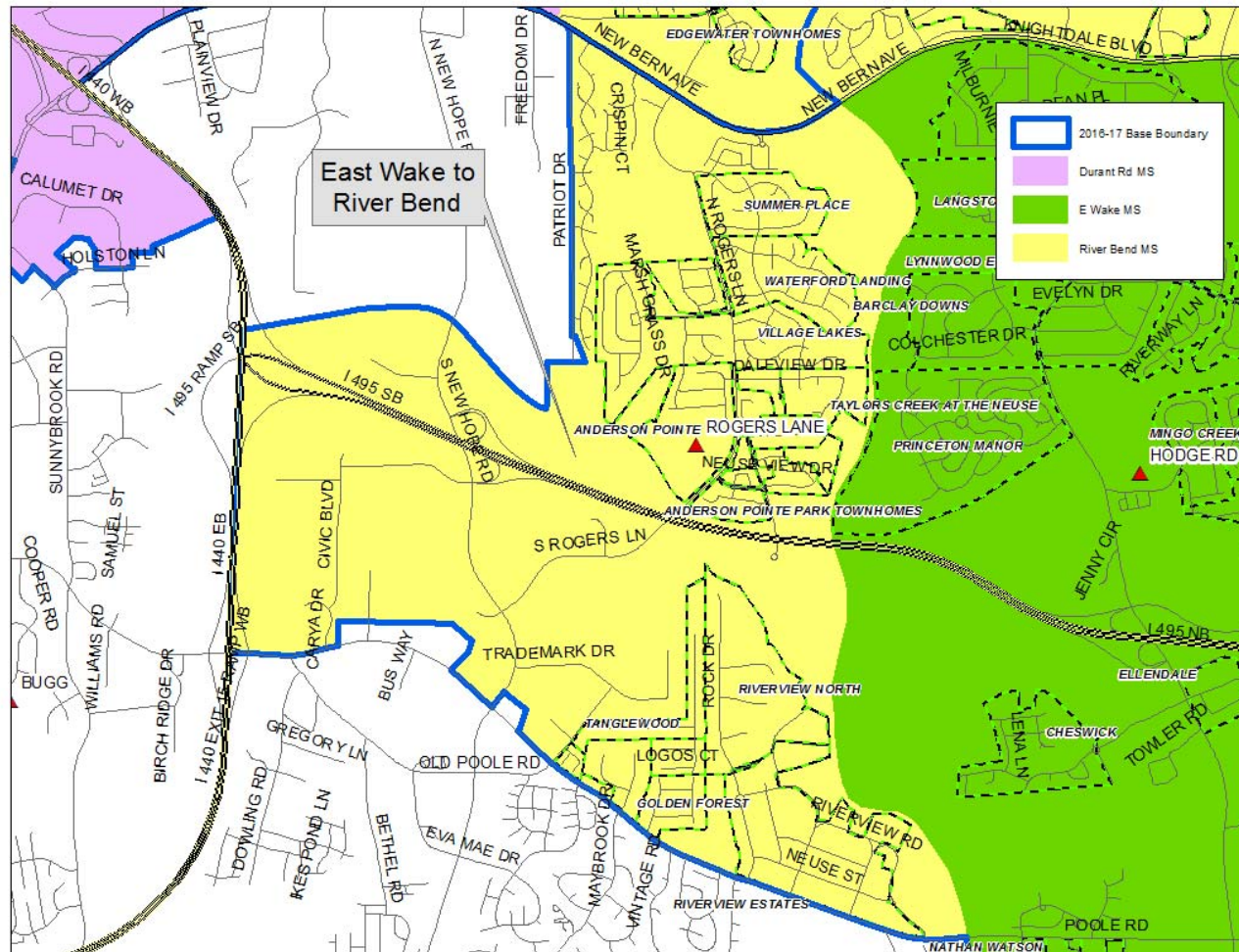
2017-18 Base Detail – River Bend MS (3 of 9)

Durant Road MS to River Bend MS



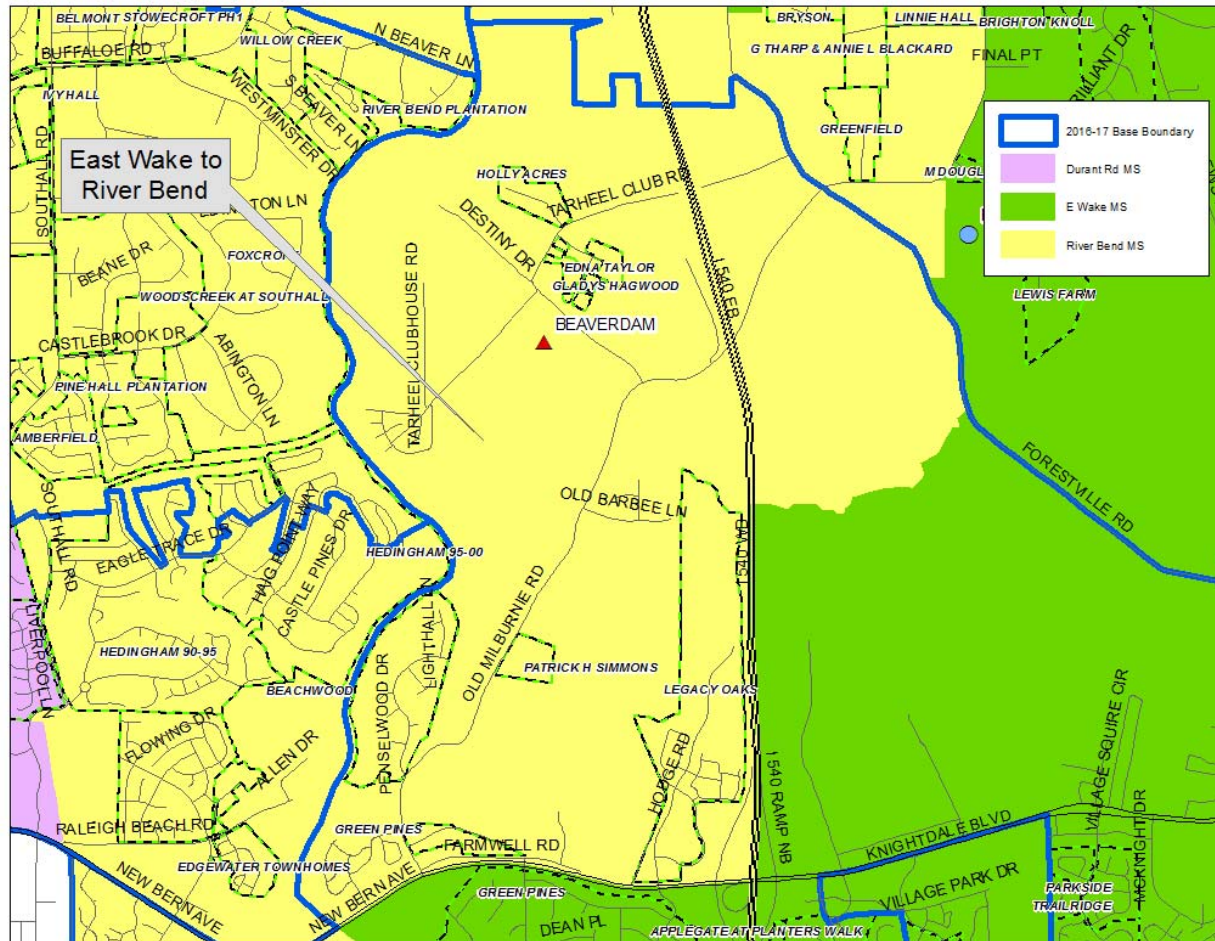
2017-18 Base Detail – River Bend MS (4 of 9)

East Wake MS to River Bend MS



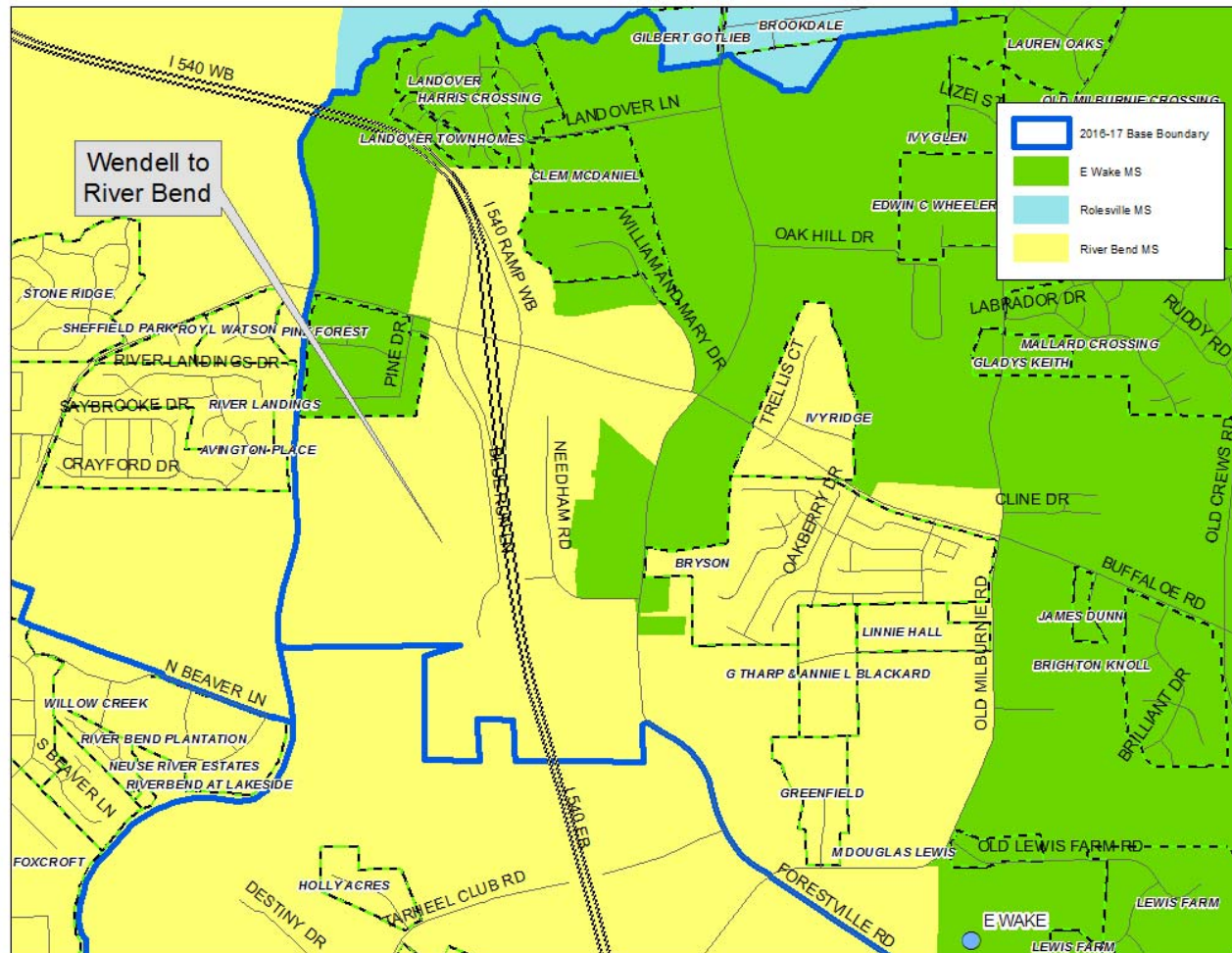
2017-18 Base Detail – River Bend MS (5 of 9)

East Wake MS to River Bend MS



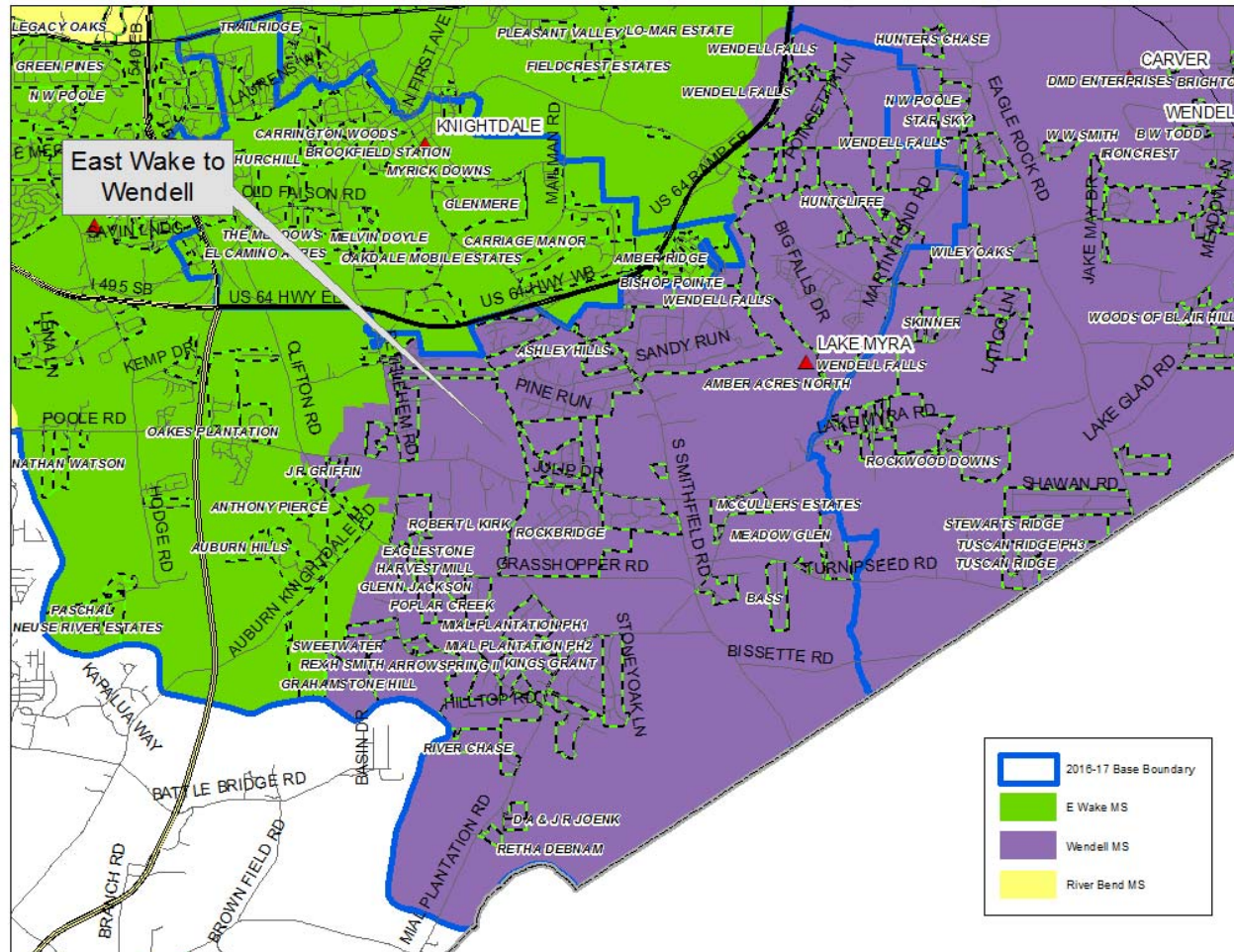
2017-18 Base Detail – River Bend MS (6 of 9)

Wendell MS to River Bend MS



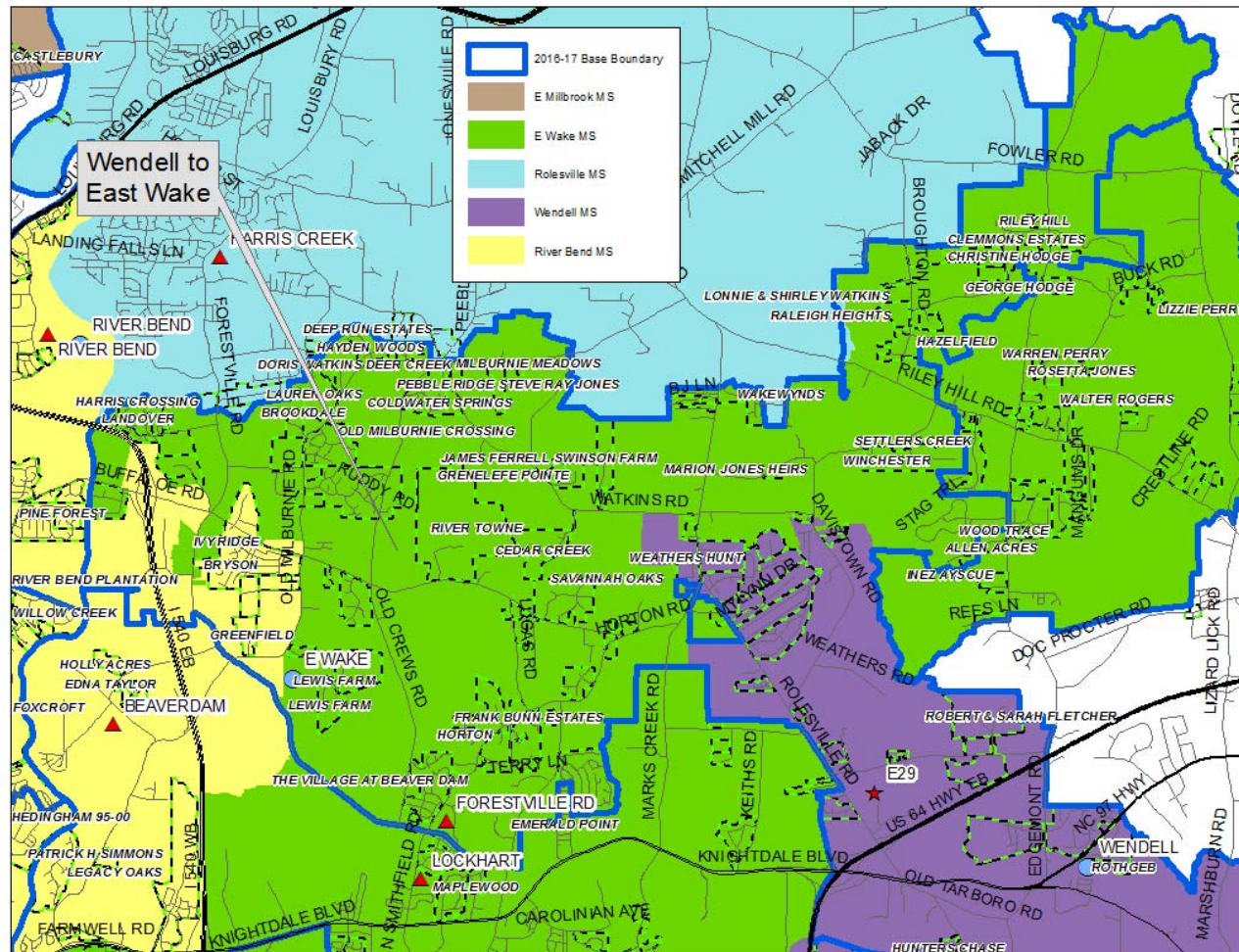
2017-18 Base Detail – River Bend MS (7 of 9)

East Wake MS to Wendell MS



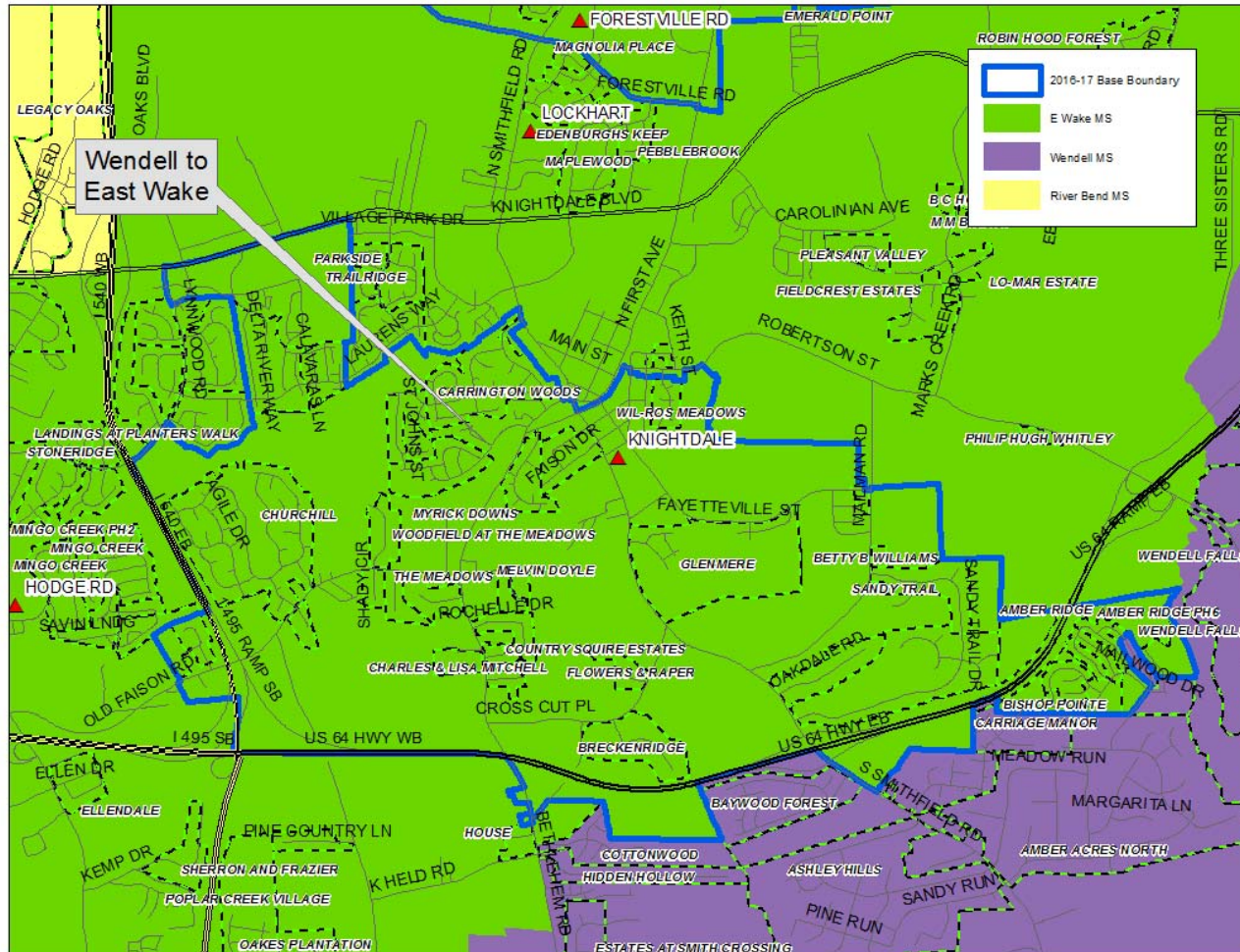
2017-18 Base Detail – River Bend MS (8 of 9)

Wendell MS to East Wake MS



2017-18 Base Detail – River Bend MS (9 of 9)

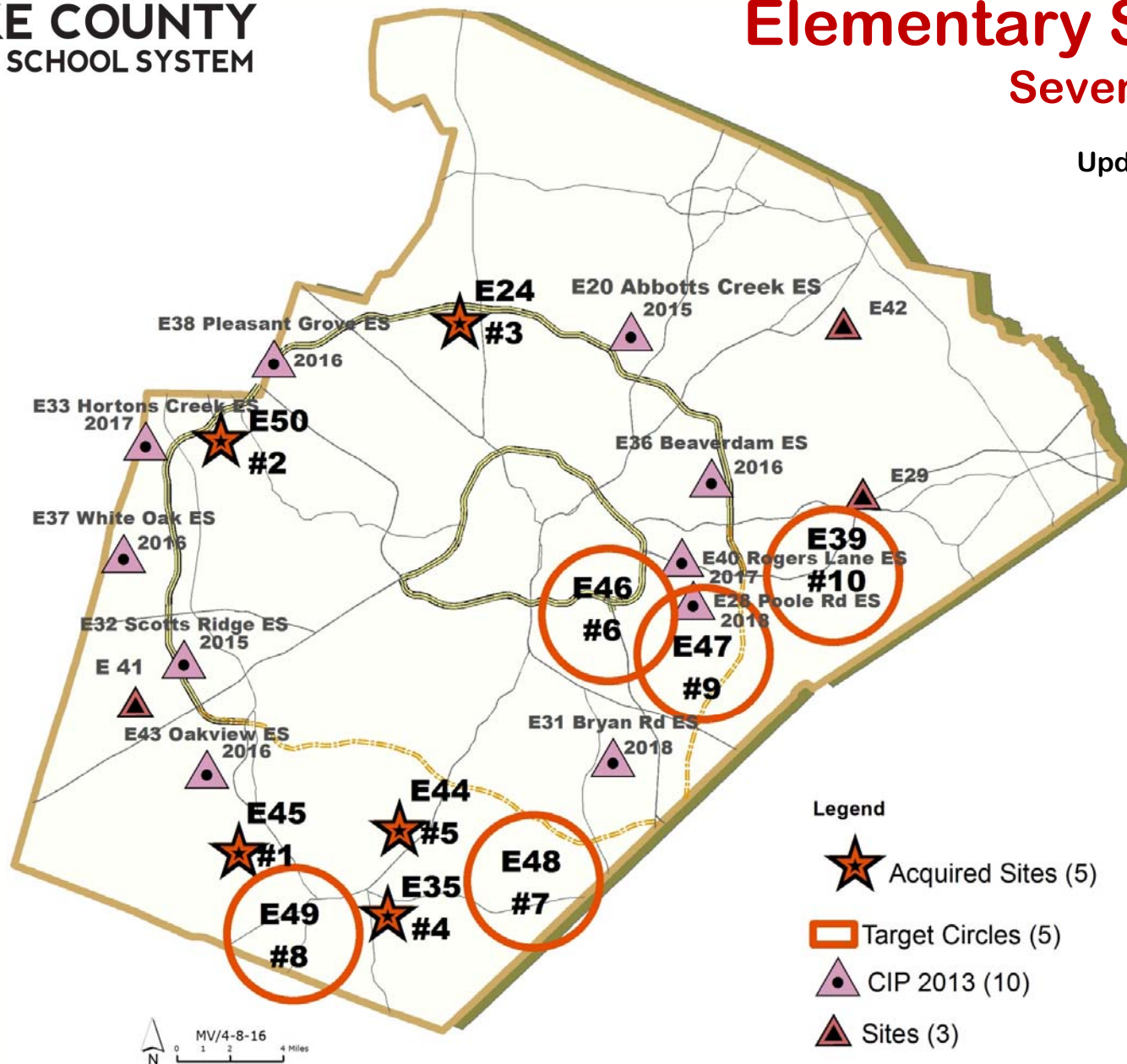
Wendell MS to East Wake MS





Elementary Schools: Seven-Year Plan

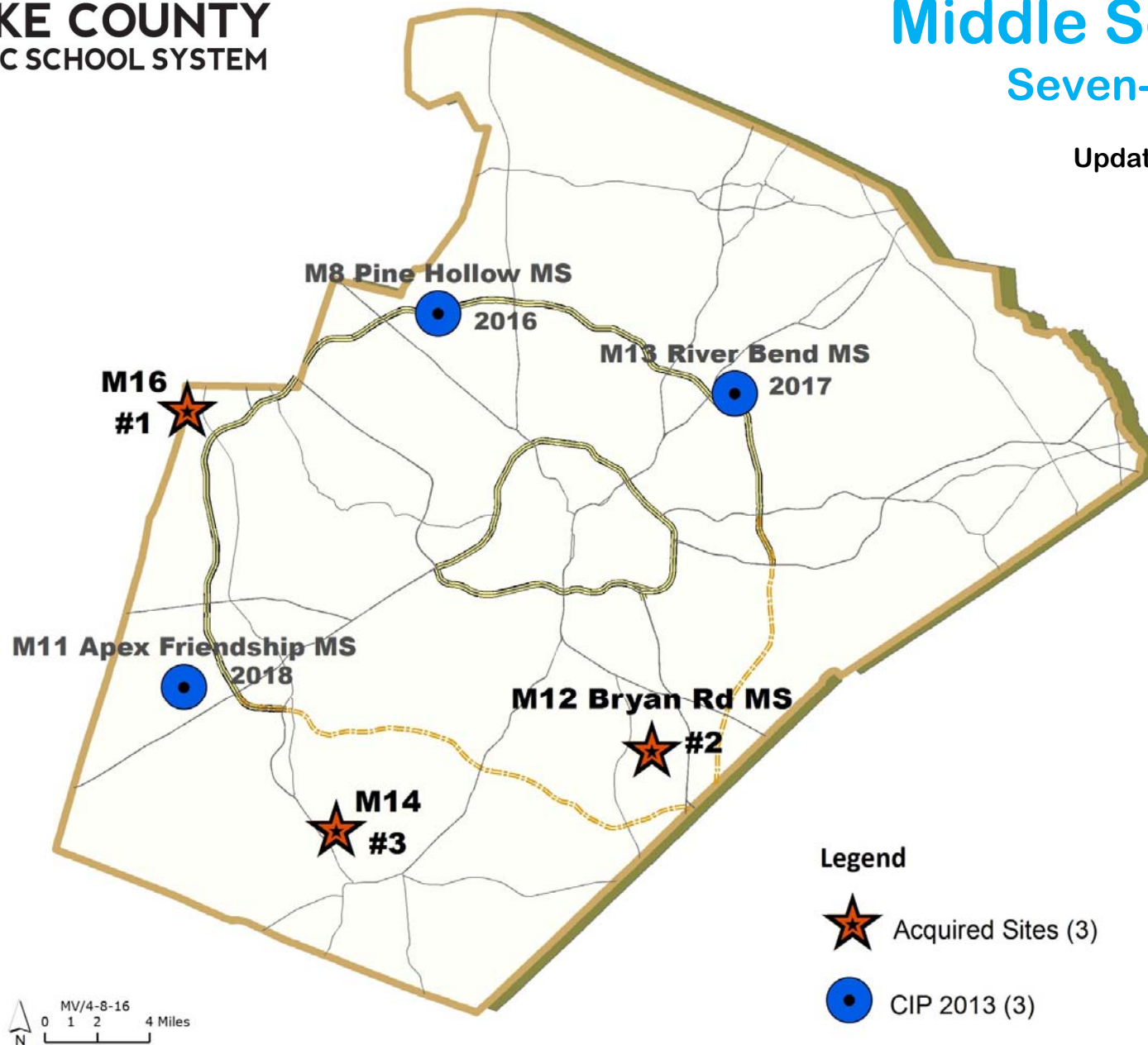
Updated: March, 2016





Middle Schools: Seven-Year Plan

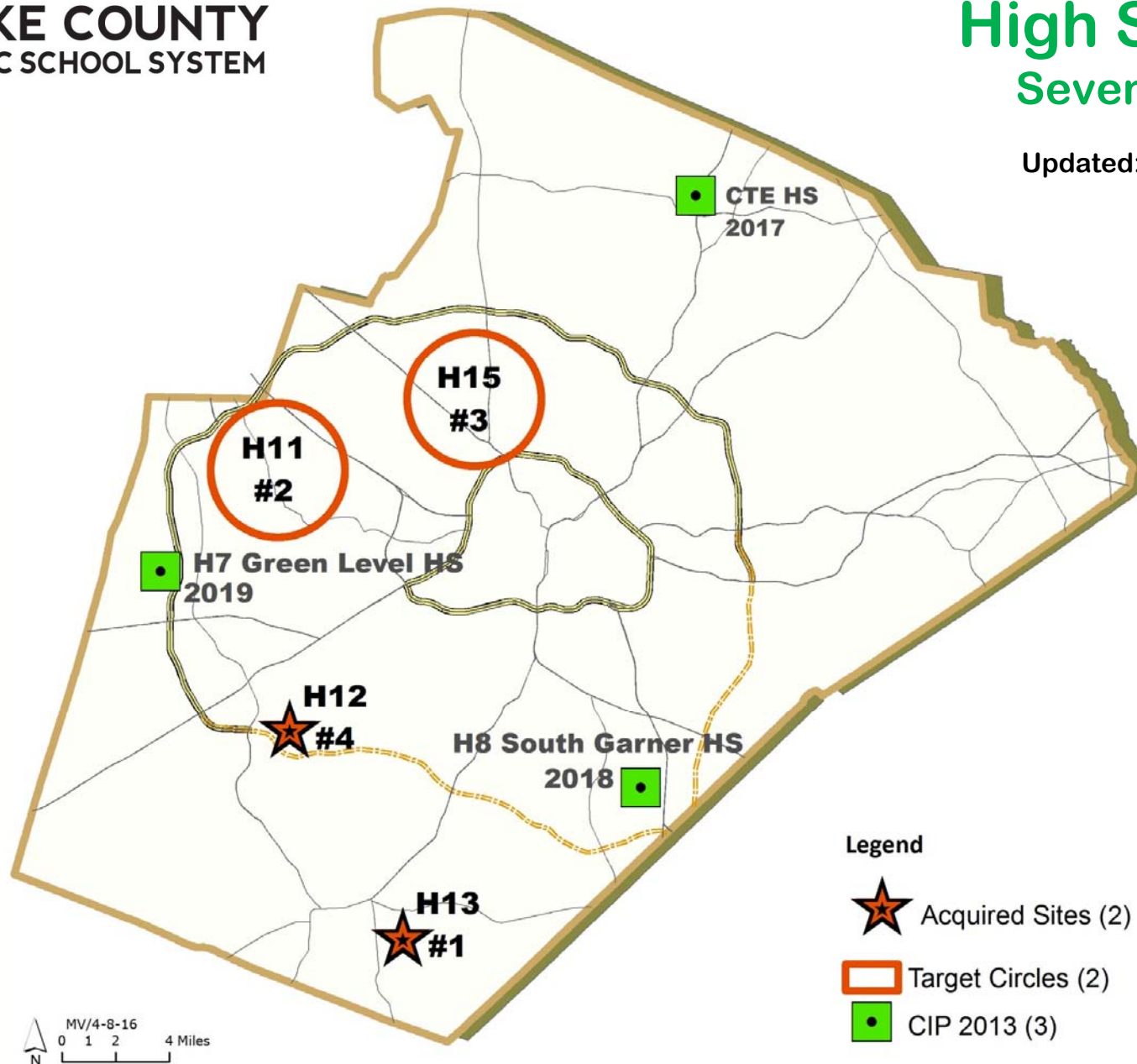
Updated: March, 2016





High Schools: Seven-Year Plan

Updated: September, 2016



A. Student Achievement

WCPSS Board Policy 4100

“Student populations at each school will provide an optimal opportunity for academic success for all students.

Factors for consideration include:

1. Providing an opportunity for families to select calendar, magnet, and application schools to support an individual student's educational needs;
2. Minimizing high concentrations of low-performing students at each school; and
3. Minimizing high concentrations of students from low income families at each school.”

B. Stability

WCPSS Board Policy 4100

“Students will have the opportunity to stay at the same school with their siblings through the exit grade without experiencing involuntary changes in school assignment. However, when reassignments are necessary for the opening of a new school this may not be guaranteed.

Factors for consideration include:

1. Providing an opportunity for students to remain at the school which they are attending (stay where you start), grandfathering guidelines;
2. Providing an opportunity for siblings to attend the same school at the same time; and
3. Providing an opportunity for year-round track/calendar alignment for siblings.”

(B-2) Opportunities for siblings to attend the same school

- Same school and same track
- We guarantee siblings acceptance through each of the application processes.
- Principals work to coordinate and balance track assignments.

C. Proximity

WCPSS Board Policy 4100

“Base school assignments will be within a reasonable distance of the student's home.

Factors for consideration include:

1. Allowing students living within the immediate vicinity of a school, defined by the assignment plan, to attend that school; and
2. Minimizing splitting of neighborhoods when developing base attendance areas.”

D. Operational Efficiency

WCPSS Board Policy 4100

“Assignments will optimize the use of school facilities and transportation resources.

Factors for consideration include:

1. Minimizing under-enrolled schools;
2. Minimizing overcrowded schools; and
3. Maximizing transportation efficiencies”.