

RALEIGH'S BEST KEPT SECRET

POE GT/AIG BASICS
MAGNET ELEMENTARY

#GROWATPOE
#POETOTHELOE



Administration

Our mission at Poe GT/AIG Basics Magnet Elementary School will provide a relevant and engaging education and will graduate students who are collaborative, creative, effective communicators and critical thinkers.

Our vision at Poe GT/AIG Basics Magnet Elementary students become lifelong learners, while growing and excelling in academic achievement, attaining physical and emotional well-being, and exploring artistic expression.



**Ms. Story
Principal**



**Ms. Stewart
Assistant Principal**

Questions?



On your table there are sticky notes. Please write down any questions you may have! We will answer these questions at the end of the information session!

The impact of Poe GT/AIG BASICS Magnet Elementary



2024 TOP Magnet School of Excellence / National Certified Demonstration School

69 years old

Magnet School for 40 years +
Formally Montessori and International

Title 1

Around 300 students for the
2024-25 school year

Our Mission & Vision

Our mission at Poe GT/AIG Basics Magnet Elementary School will provide a relevant and engaging education and will graduate students who are collaborative, creative, effective communicators and critical thinkers.

Our vision at Poe GT/AIG Basics Magnet Elementary students become lifelong learners, while growing and excelling in academic achievement, attaining physical and emotional well-being, and exploring artistic expression.



At Poe GT/AIG

BASICS

- We offer scholars the opportunity to explore and cultivate their strengths in multiple areas of intelligence through elective classes. Additionally, scholars who demonstrate academic and intellectual gifts will have expanded offerings in core and elective classes.
- We have a teacher dedicated to K-2 enrichment as well as a teacher dedicated to 3-5 enrichment that supports them throughout their experience at Poe!
- Our electives offer scholars and families an opportunity to:
 - Try a variety of electives that are not offered in a non magnet school
- Build relationships with teachers from grade levels outside of their own!
- Be exposed to skills before they are taught in core classes, and opportunities to strengthen those skills while at Poe!
- Remove stressors of multiple extracurriculars since scholars have access to EXPERTS during school hours!



Gifts & Talents

“What makes Poe unique is we honor scholars for who they are first. Even if they do not know where they are going, we support our scholars along their journey.” Ms. Regan

At Poe, scholars have the opportunity to collaborate and learn from others on a similar magnet pathway such as Enloe Magnet High School. Our scholars have opportunities to collaborate with community leaders from the local, state, national, and international level. For example, we have a Garden Design elective where our scholars get to work with community partners like Food Shuttle and Food Corps!

Our families are not just a number, they help shape what events we have such as our Family F.I.R.S.T. events! We look forward working as partners for years to come.



Typical Day in 1st Grade

8:35 Arrival

Breakfast and/or Morning Work

9:10 English Language Arts (ELA)

Foundational Skills

10:15 Specials/K-2 Elective*

Dance, Drama, Art, Music, PE

11:00 Lunch / Recess

12:00 Math

1:00 English Language Arts (ELA)

Language Comprehension and Writing

2:00 Snack

2:10 Science/Social Studies

2:35 Specials/K-2 Elective

Dance, Drama, Art, Music, PE

3:35 Dismissal

[NC 1st Grade Quick Reference Curriculum Guide](#)



Typical Day in 2nd Grade

8:35 Arrival

Breakfast and/or Morning Work

9:05 -Morning Meeting

9:15 Math

10:15 Specials/K-2 Elective*

Dance, Drama, Art, Music, PE

11:00 Lunch / Recess

12:00 Letterland and Small Groups

1:05 EL: Reading and writing

1:45 K-2 Elective*

2:25 EL continued

2:45 Snack

2:50 Science/Social Studies

3:35 Dismissal

[NC 2nd Grade Quick Reference Curriculum Guide](#)



Typical Day in

3rd Grade

8:35 Arrival

Breakfast/Morning Work

9:05

Morning Meeting

9:15-10:15

Math

10:15 -11:10

English Language Arts (ELA)

11:10 -12:00

Elective #1

12:00-1:00

Lunch / Recess

1:00 - 1:45

EL Part 2

1:45 - 2:25

Elective #2

2:30-2:45

EL Part 3

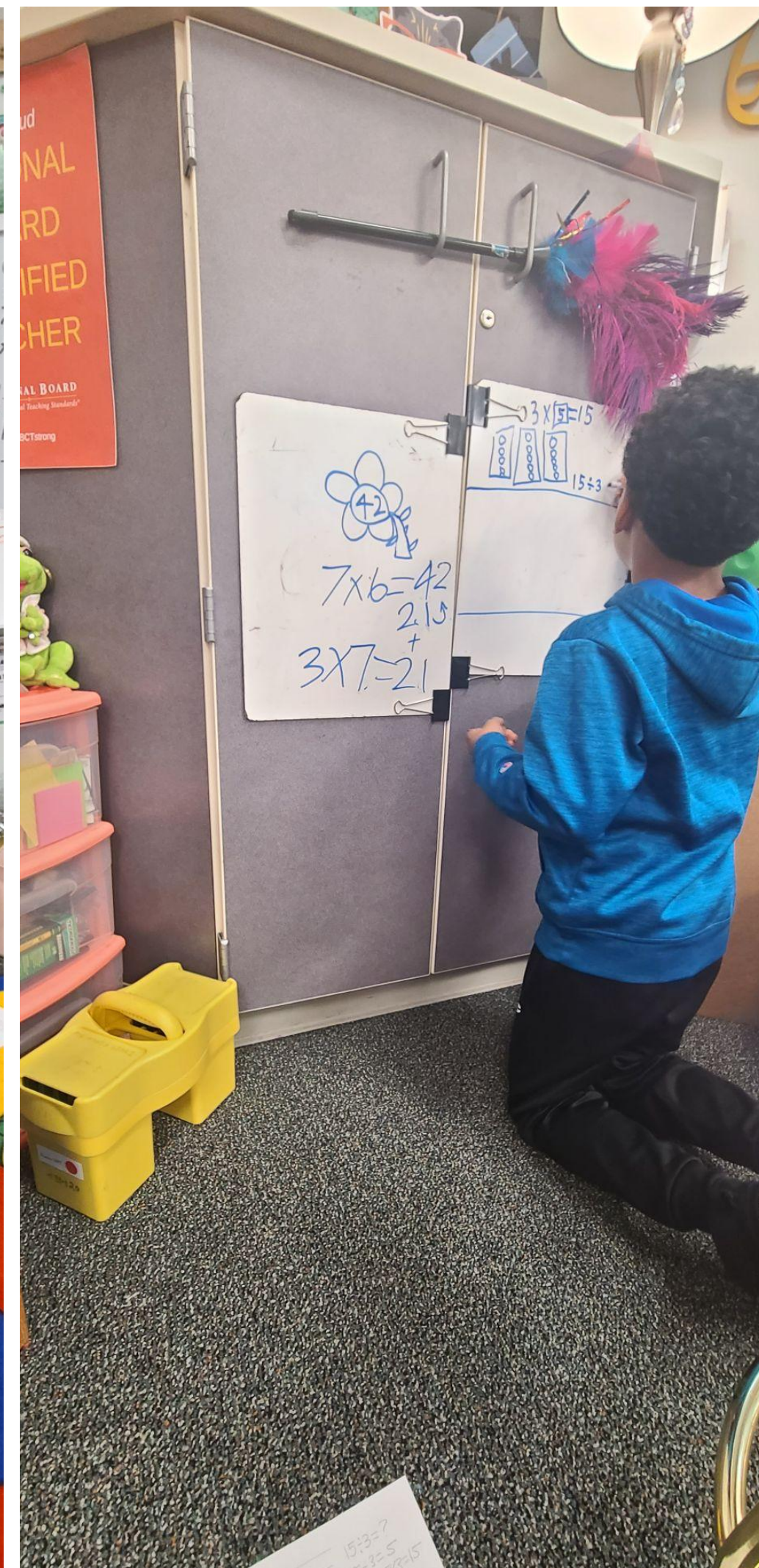
2:45-3:30

Science/Social Studies

3:35

Dismissal

[NC 3rd Grade Quick Reference Curriculum Guide](#)



Typical Day in

4th Grade

8:35 Arrival

Breakfast and/or Morning Work

9:05 Morning Meeting

9:15 English Language Arts (ELA)

Reading and writing

11:15 Specials/3-5 Elective*

Dance, Drama, Art, Music, PE

12:00 Lunch / Recess

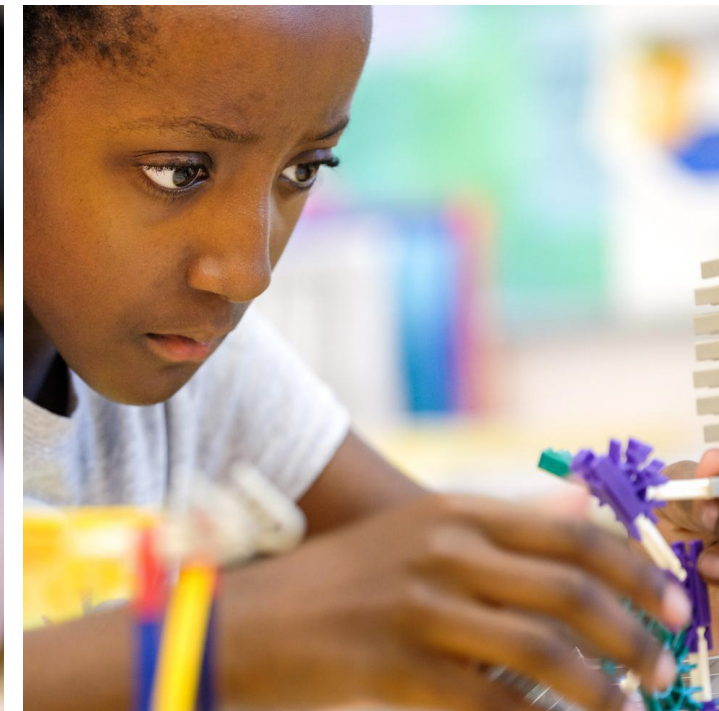
12:55 4-5 Elective*

1:35 Math

2:35 Science/Social Studies

3:35 Dismissal

[NC 4th Grade Quick Reference Curriculum](#)



Typical Day in

5th Grade

8:35 Arrival

Breakfast and/or Morning Work

9:05 Morning Meeting

9:15 English Language Arts (ELA)

Reading and writing

11:15 Specials/3-5 Elective*

Dance, Drama, Art, Music, PE

12:00 Lunch / Recess

12:55 4-5 Elective*

1:35 Math

2:35 Science/Social Studies

3:35 Dismissal

[NC 5th Grade Quick Reference Curriculum Guide](#)





Electives

1st-5th Grade Elective Schedule

1st Quarter: 2 Electives

2nd Quarter: 2 Elective

3rd Quarter: 2 Electives

4th Quarter: 2 Electives

Families choose a new elective every 8 weeks.

For more information on electives please click [here](#).

Every semester families can look through the Parent Portal to learn more about each elective from the teacher's perspective!

Kindergarten only gets a special in Quarter 1 and then Q2 they receive an elective in the afternoon. By Q3 and Q4 Kindergarten scholars have 2 electives a day just like grades 1st-5th!

GT Electives

- Offer Electives such as Strings as early as Kindergarten!

Learn more here from

- [Robotics grades K-5!](#)
- [Diverse P.E. & Health Electives](#)
- [Showcase Talents](#)
- [TWO Theater Productions a Year!](#)
- [AIG Electives such as Odyssey of the Mind](#)



What does AIG-Basics Program look like at Poe?

Grades K-3

- Differentiated instruction based on classroom observation and assessment data
- Push in/ Pull out model
- Nurturing Program
- PET Thinking Skills Program
- Critical Thinking
- Reasoning
- Bloom's Taxonomy
- Explorers
- Socratic Seminar
- CogAT Practice

Grades 4-5

- Curriculum Delivery Model
- *Compacted curriculum
- *Accelerated instruction
- Receive core instruction from AIG teacher for area(s) of identification (literacy & mathematics)
- AIG Electives
- Compete in State level competitions
 - IE: Soil and Water Conservation Poster Competition



AIG Electives

K-2 Examples

Literacy

- Beginning Literary Styles -AIG
- Beginning Writing Experiences- AIG
- Best of the Best K-2- AIG
- Fairy Tales- AIG
- Thinking Power- AIG

Mathematics

- Dimensions: Build It! - AIG
- Grin and Graph It- AIG
- Math Around Us- AIG
- Number Detectives AIG (formerly Magical Math)
- Patterning- AIG

Science

- Animal Studies - AIG
- Come Fly with Me – AIG
- The Invisible Force - AIG
- Learning Through Experimentation – AIG
- Protectors of the Earth (Nature and Ecology) - AIG

Social Studies

- Across the Oceans – AIG
- Geographic Exploration - AIG
- It's a Small World – AIG
- What's in the News? - AIG

3-5 Examples

Literacy

- Best of the Best 3-5 - AIG
- I Love a Mystery - AIG
- It's Comical! - AIG
- Media Masters: The Truth About Advertising - AIG
- Odyssey of the Mind - AIG

Mathematics

- Architecture – AIG
- Geometric Design - AIG
- Let's Make a Million - AIG
- Logic and Problem Solving – AIG
- Topology (Introduction) - AIG

Social Studies

- Archaeology AIG
- Around the World in 30 Days – AIG
- Think About It! Philosophy & Logic - AIG
- U.S. Geography
- We the People – AIG

Science

- Aeronautics - AIG
- Ecology - AIG
- Energy – AIG
- Inventions (Design Engineering) - AIG
- Physics in Action - AIG
- Scientific Reasoning – AIG
- Science Olympiad- AIG

Behavioral Health

PBIS

*Positive Behavior Intervention
and Supports*

- Focused on desired behaviors
- Prevent negative behaviors
- Teach replacement behaviors
- PAWS
 - **P-** practice self control
 - **A-**always follow directions
 - **W-**work with purpose
 - **S-** show respect

Conscious Discipline

Safety. Connection. Problem-Solving.

- Safe Place (Self-Regulation Skills)
- Time Machine (Conflict Resolution)
- Wish You Well

Classroom Guidance

- Social Emotional Learning
- Culturally Relevant Content
- WCPSS District Recommended

Implementation of Conscious Discipline at Home



ABC's for parents of little ones...



AWARENESS

Be aware of your own inner state. Is your heart rate elevated? Are you feeling tense/frustrated, etc.? Children can FEEL our upset, so the next step is BREATHE DEEPLY and bring yourself back to the present moment.



BREATHE

Take deep belly breaths. Inhale through your nose for at least 5 seconds, and exhale through your mouth for at least 10 seconds. Do this at least 3 times.



CLOSENESS

They want to be close to you because you are their Safe Place™. Co-regulation and connection/bonding happen when they are close to you. Take deep breaths with them in moments of closeness.

To learn more about Conscious Discipline such as S.T.A.R Breathing Technique to practice this summer click [here](#).

[Conscious Discipline Video Library](#)

Transportation

- **Carpool**
- **Express &
Neighborhood Busing**
- **Support Before & After
Care**



Transportation

Transportation changes must be in by 3:00 PM!

It is important to communicate transportation plans with your child's teacher.



❑ School Transportation (Bus/Van/Cab)

- Transportation / Bus Rider Registration
- Bus Rules and Expectations
- Transportation Tags (**RED** for K & 1)
- [Here Comes the Bus](#)

❑ Carpool

- Arrival and/or dismissal
- Issued 2 tags per family
- AM drop off 8:35 - 9:05
- PM pick up 3:35 - 4:00

❑ Walker

- K and 1st graders must be signed out
- No parking on Peyton Street to pick up

Meals and Snacks

All students will be issued
their Student ID/ "Lunch #."

This is the same number they previously have used!

☐ Breakfast

-8:35 - 9:00 AM

☐ Lunch

-25 minutes

☐ Snack

-Healthy Snack

Free-and-Reduced Application



Whats for lunch today?

Before and After Care

Contact Person: Ms. Register

- **Days: Monday to Friday**
(when school is in session)
- **Times**
 - 7am - 8:35am - Before
 - 3:50pm - 6pm - After



Health and Wellness



- Required health forms and vaccinations
- Student medication
- Illness policy
 - Return to school

School Calendar

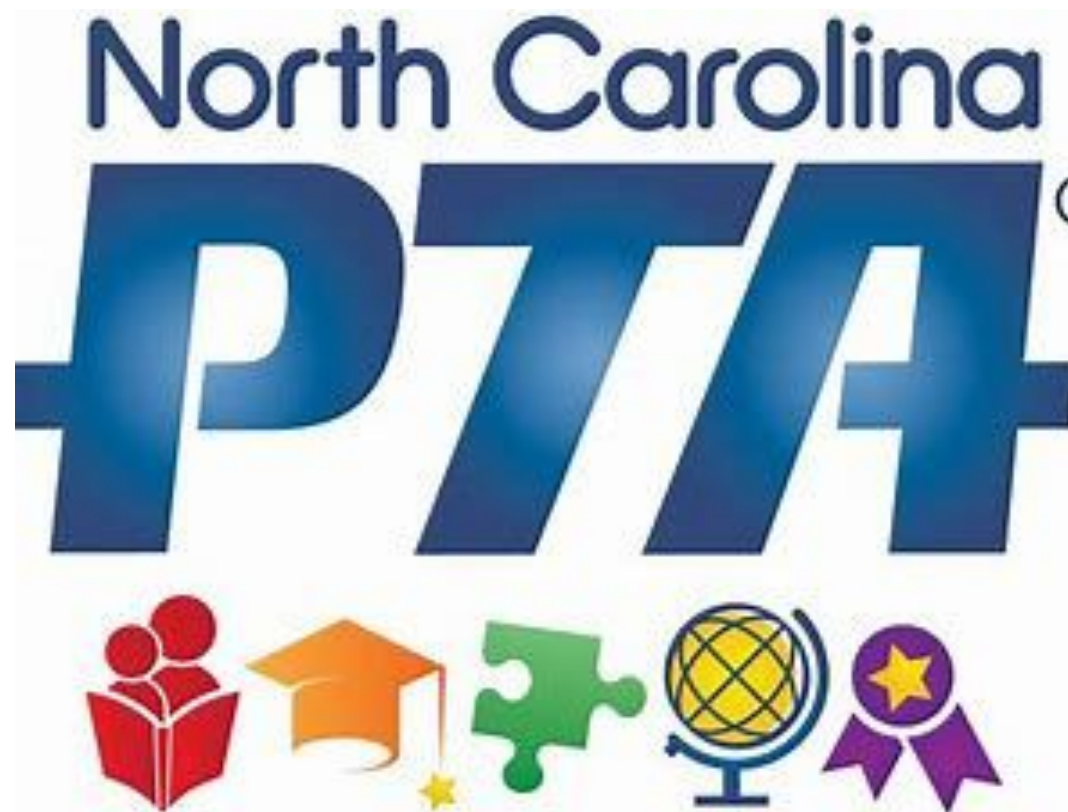


- Traditional Calendar Info can be found on WCPSS website:
<https://www.wcpss.net/domain/19>
- Attendance Requirements
- Important Dates
 - First Day of School
 - Meet the Teacher

PTA

How do you join the PTA?

PTA Activities and School Support



Questions?
PTA President
Nicole Wilkins
poepta1@gmail.com

What Starts Here Changes Everything

We look forward to supporting your family
and student the next six years while at
Poe Magnet GT/ALG Elementary!

We will be sending out information in
the coming weeks for Play Dates and
events like Orientations!



Homework Resources

Tag our Session Today:
#GROWATPOE

