

# Redistricting Following the 2020 Census

Adam Mitchell  
Tharrington Smith, LLP

Blake Esselstyn  
Mapfigure Consulting

WAKE COUNTY PUBLIC SCHOOL SYSTEM  
February 16th, 22nd, and 23rd, 2022

# What is redistricting and does the Board need to undertake the redistricting process?

- ▶ Redistricting is based on the constitutional principle of one-person one-vote
  - ▶ This is a way of saying that the relative voting strength of all voters in the county should be close to identical; and
  - ▶ While true population equality is required for the Congress, local governments are given more flexibility.
- ▶ A local government needs to redistrict after the return of each decennial census if two criteria are met:
  - ▶ It uses true electoral districts in its elections; and
  - ▶ The current districts are not within +/- 5% of the ideal district population using the 2020 census data.

# Who is responsible for the redistricting process?

- ▶ Under NCGS 115C-37(i), the Board is responsible for the process; and
- ▶ Once the Board adopts its plan, no further approvals are required before the plan goes into effect.

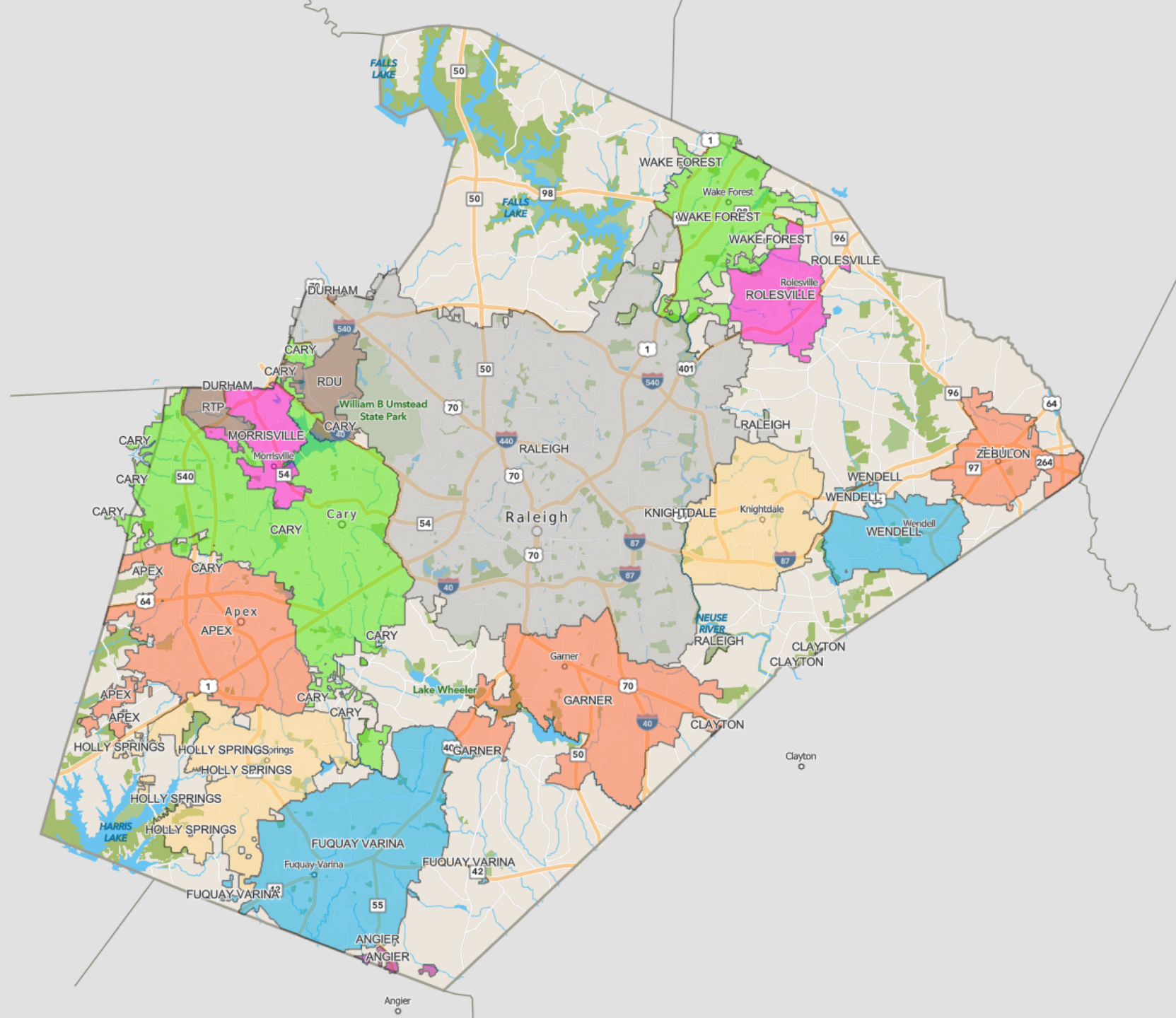
# How is the process conducted?

- ▶ The law offers little specific guidance, but
  - ▶ The process takes place in open, public meetings;
  - ▶ The Board had an introductory presentation on September 21, 2021;
  - ▶ The Board considered criteria or guidance for the process on December 7, 2021;
  - ▶ We drafted three plans initially presented to the Board on February 1, 2022;
  - ▶ Public input is important, including three public engagement sessions;
  - ▶ The Board will receive the input from these sessions, and will work to reach consensus around a preferred plan;
  - ▶ We will prepare the necessary resolutions for the Board to adopt that plan; and
  - ▶ Once adopted, we will export the new maps to the Board of Elections, the County GIS Department, etc.



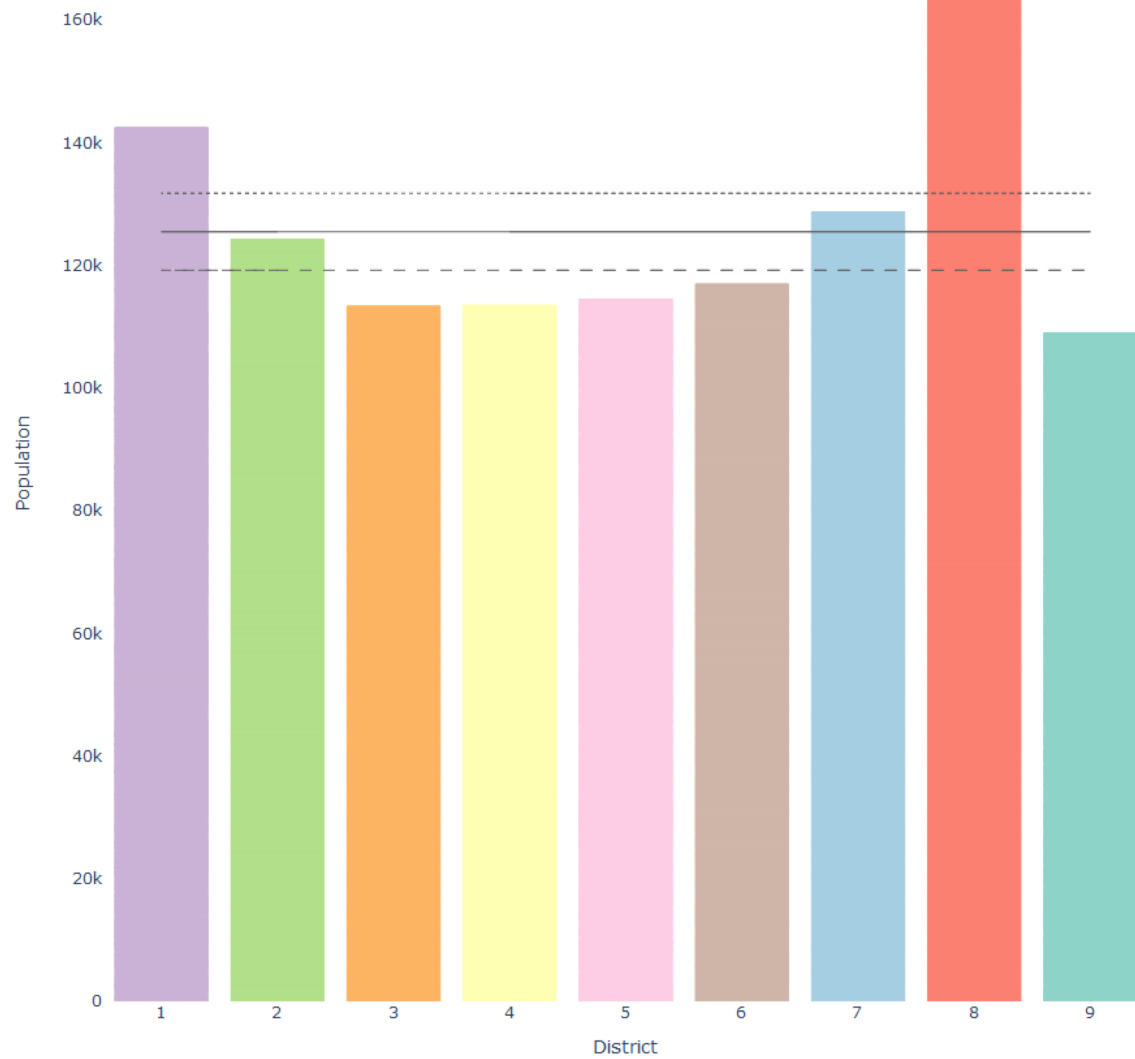
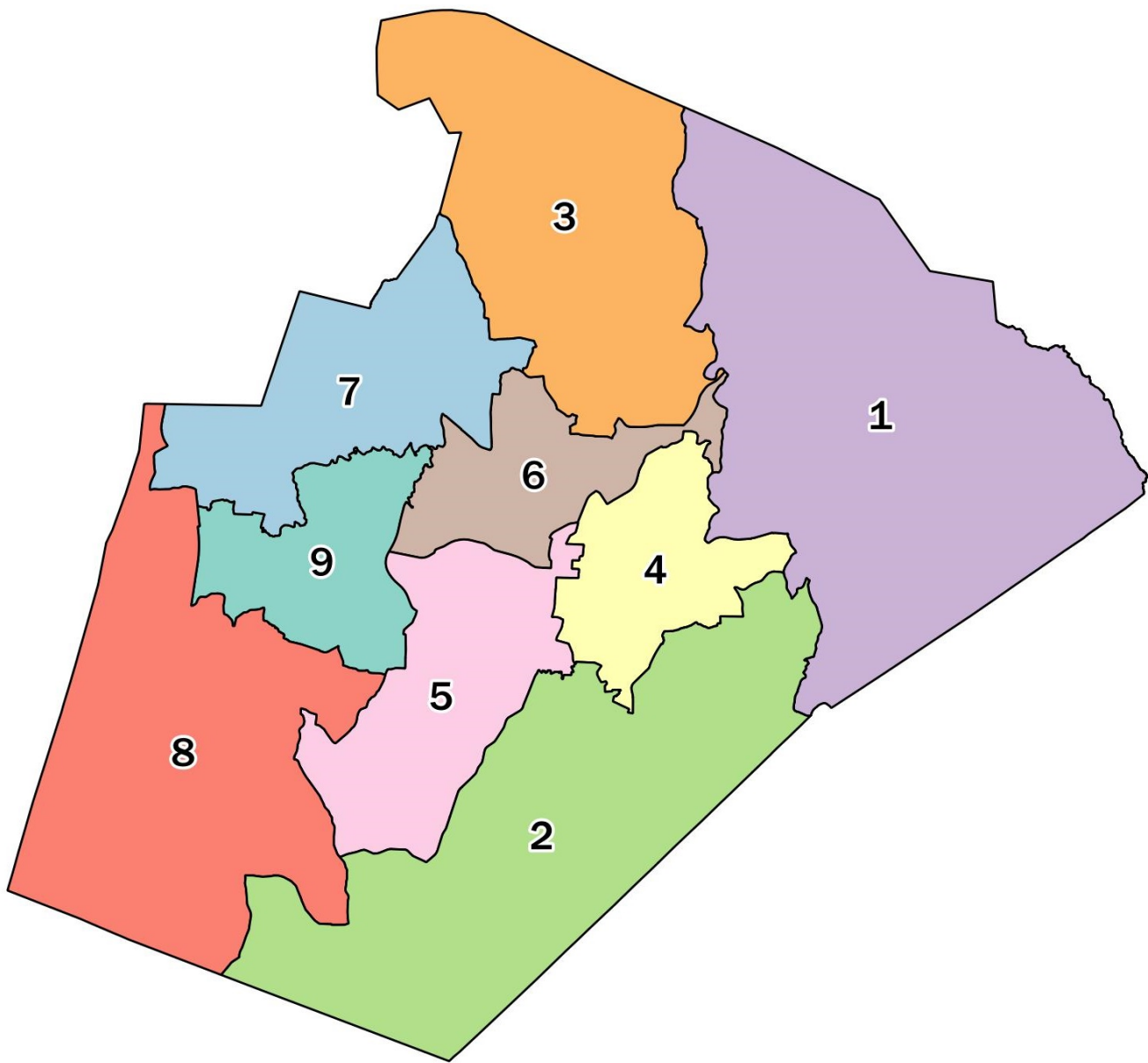
# When does the process need to be completed?

- ▶ The next election is in November of 2022 and the filing period opens July 1;
- ▶ We will need to complete the process in advance of the opening of the filing period so that candidates know which districts they reside in; and
- ▶ To allow for appropriate time, the Board is looking to adopt its plan in March or April.



## JURISDICTION

- ANGIER
- APEX
- CARY
- CLAYTON
- DURHAM
- FUQUAY VARINA
- GARNER
- HOLLY SPRINGS
- KNIGHTDALE
- MORRISVILLE
- RALEIGH
- RDU
- ROLESVILLE
- RTP
- WAKE FOREST
- WENDELL
- ZEBULON

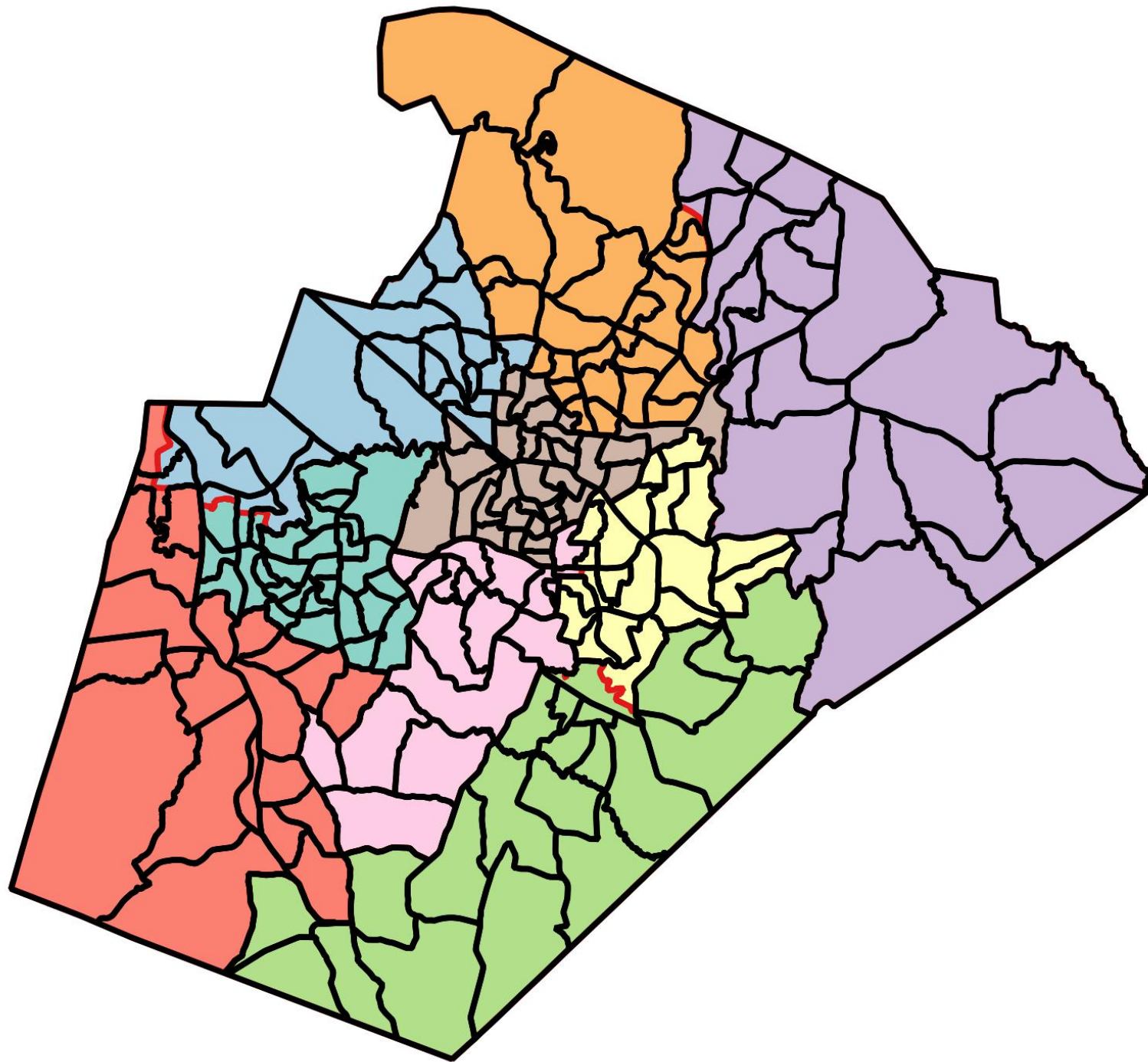


# Foundational Criteria Satisfied in All Draft Plans

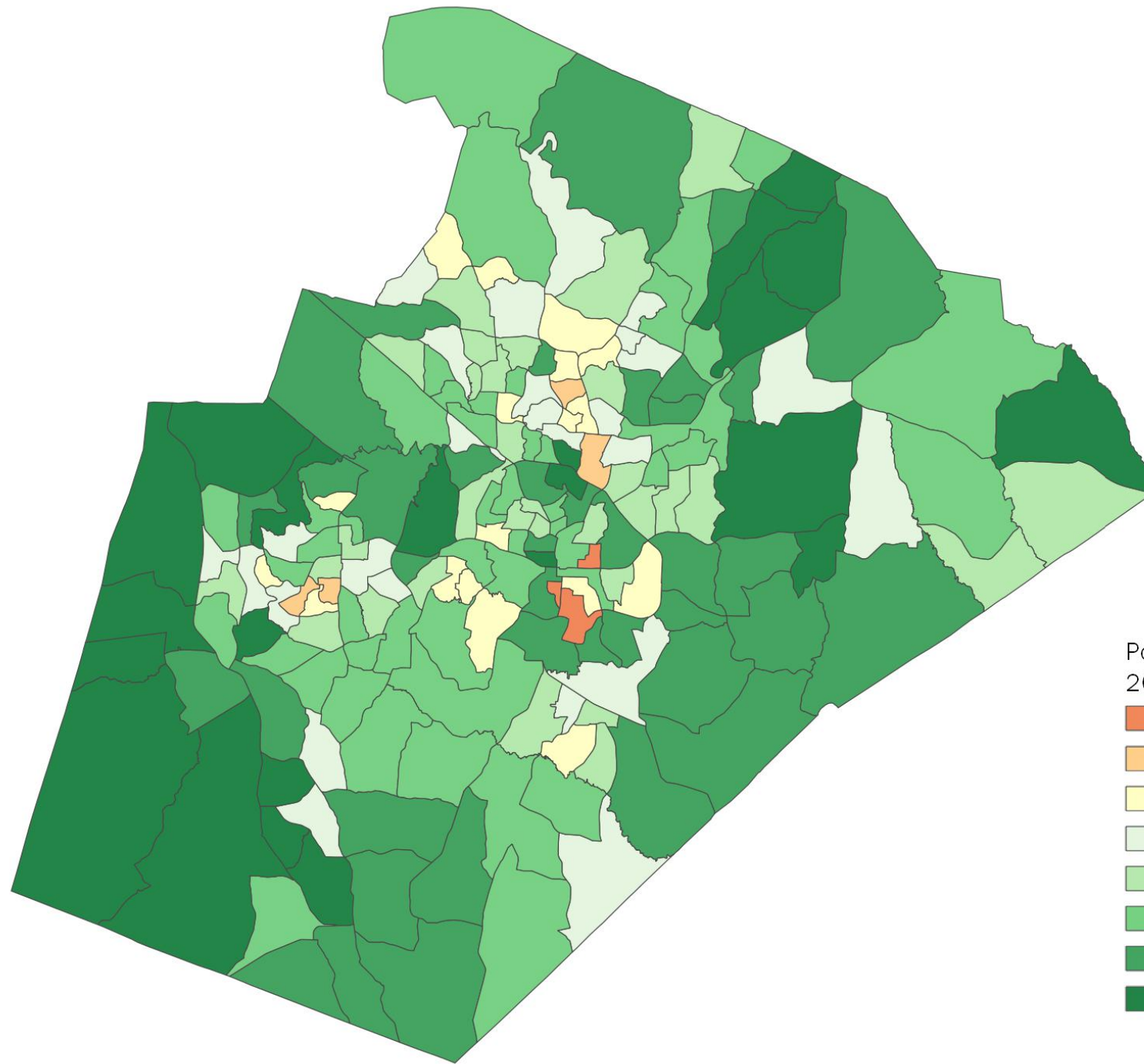
- Population equality
- Consideration of the Federal Voting Rights Act
- Contiguity
- All split census blocks resolved (and no split blocks introduced)
- (Partisan election data were *not* considered.)

# Higher-Tier (Fully Applied) Criteria Satisfied in All Draft Plans

- Using the existing districts as a starting point and striving to preserve their cores
- Using precincts/VTDs as building blocks and keeping them intact (zero precinct splits in any draft plan)
- Avoiding the pairing of incumbents in the same district
- Taking into account expected growth

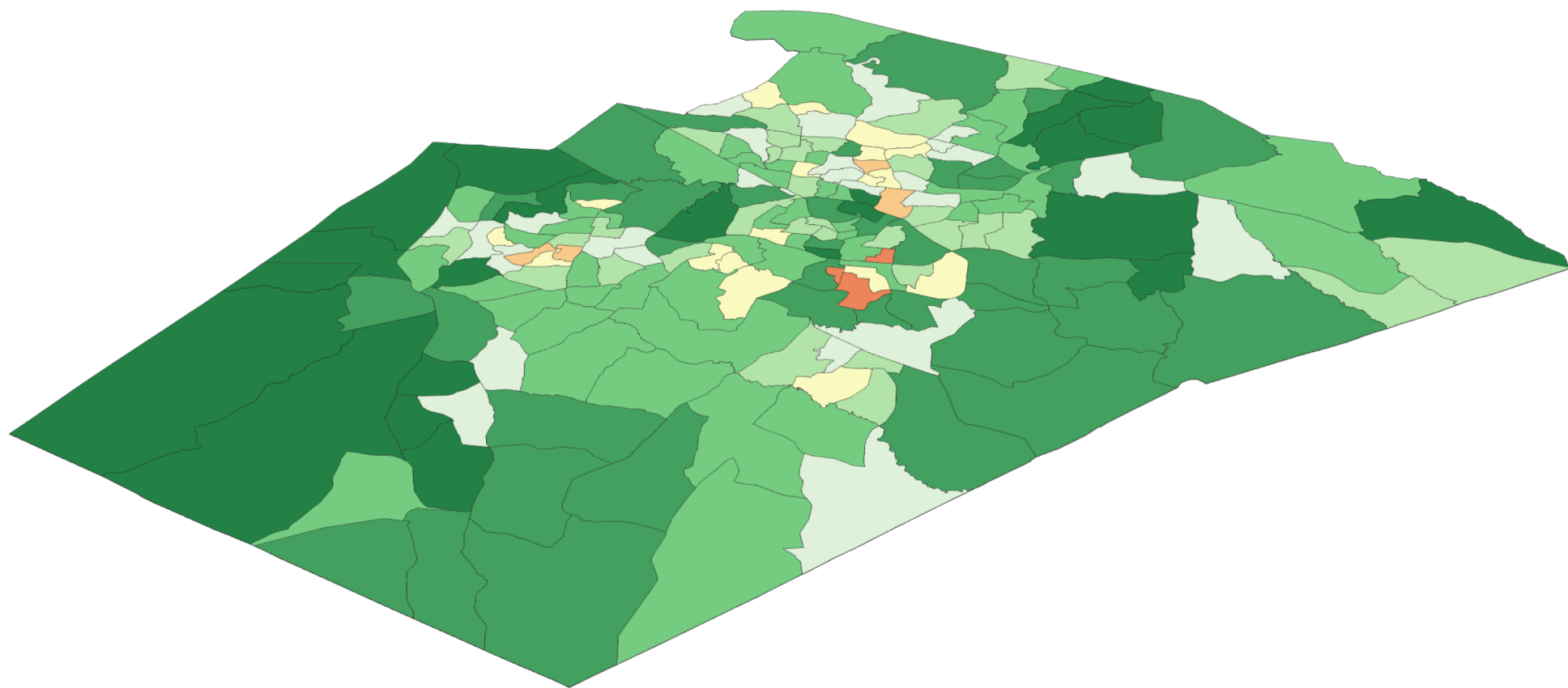




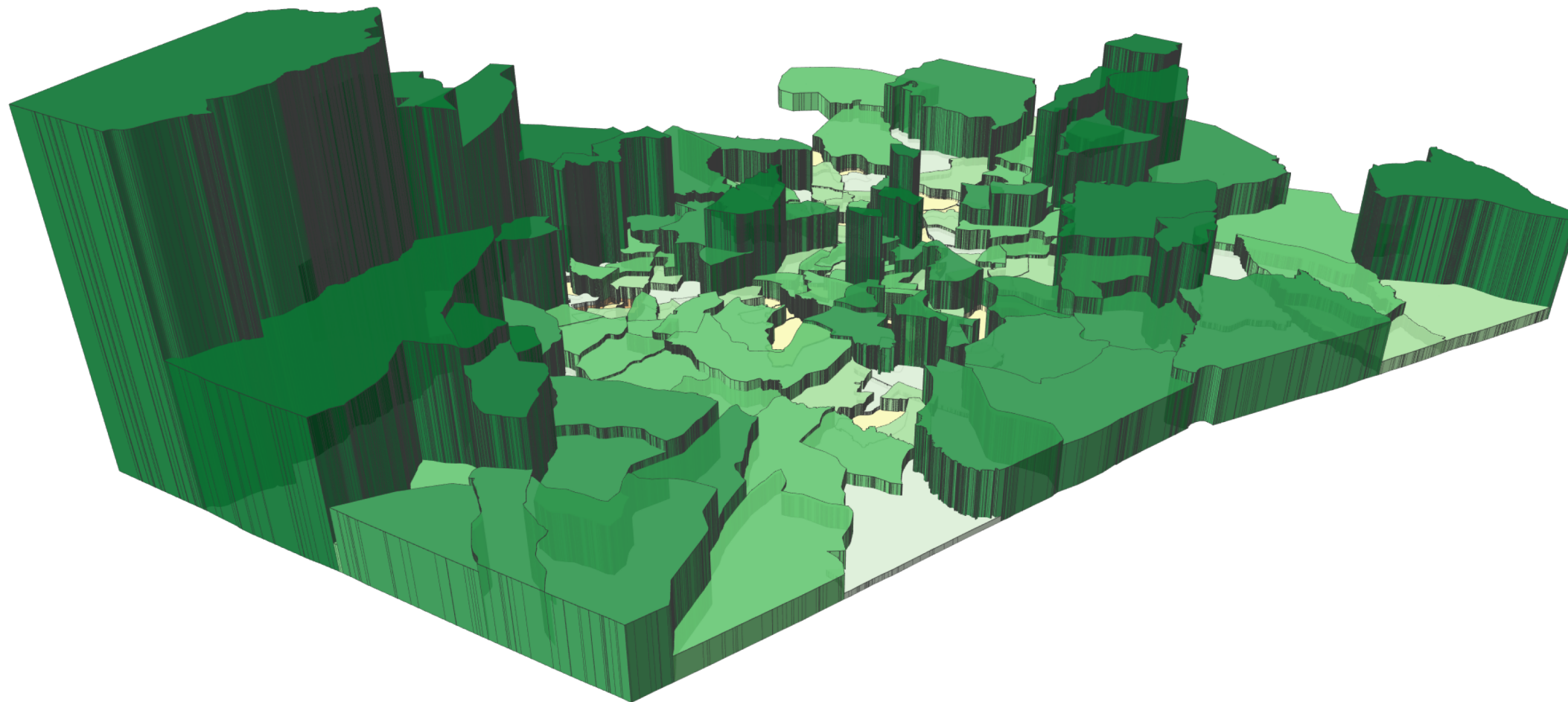


Population change from  
2010 to 2020 (2010 VTDs)

- Reduction below -10%
- 10% to -5%
- 5% to 0%
- 0% to 5%
- 5% to 10%
- 10% to 20%
- 20% to 50%
- Increase over 50%

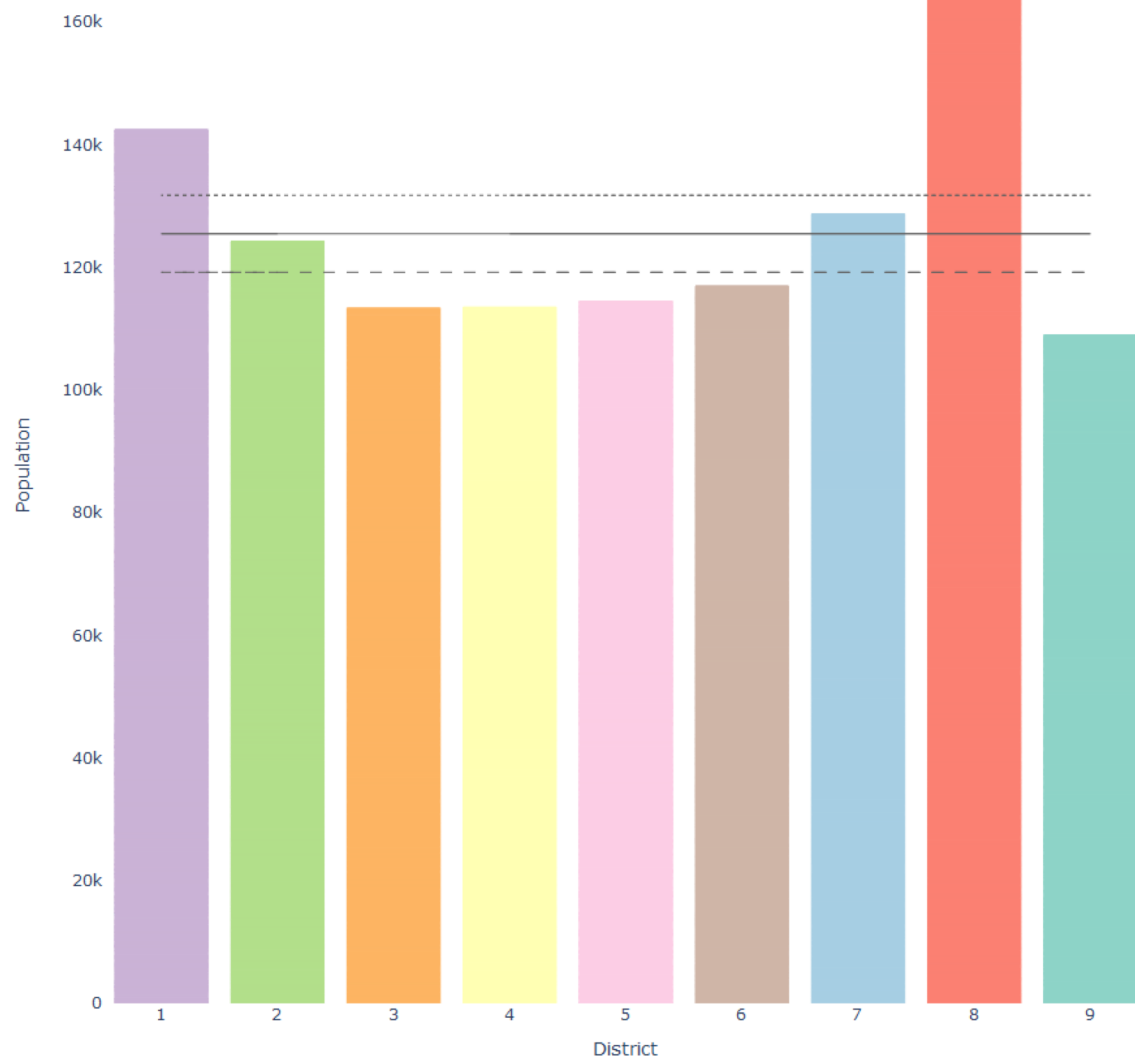
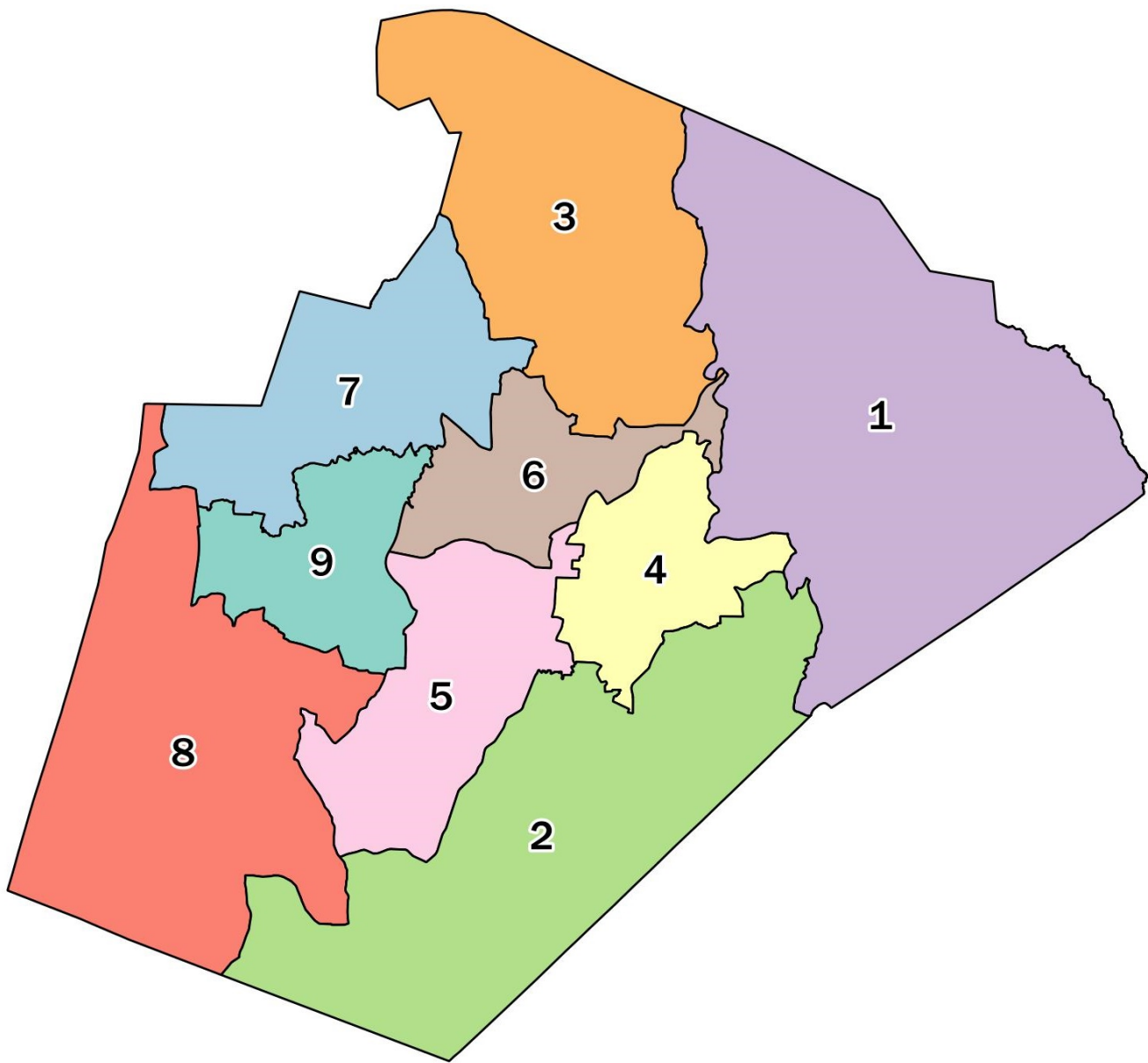




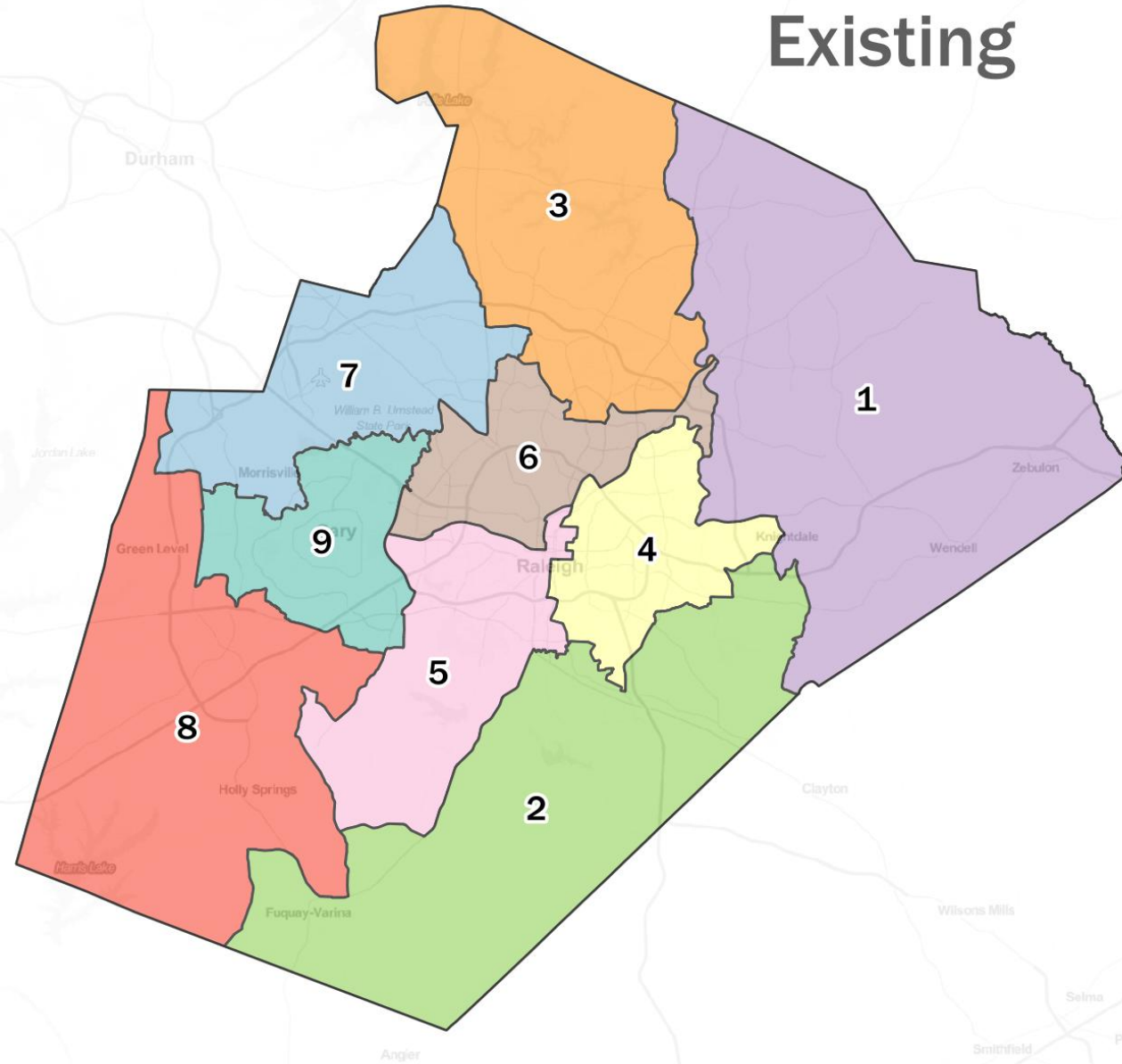


# Next-Tier Criteria Applied to the Extent Possible (Tradeoffs Inevitable)

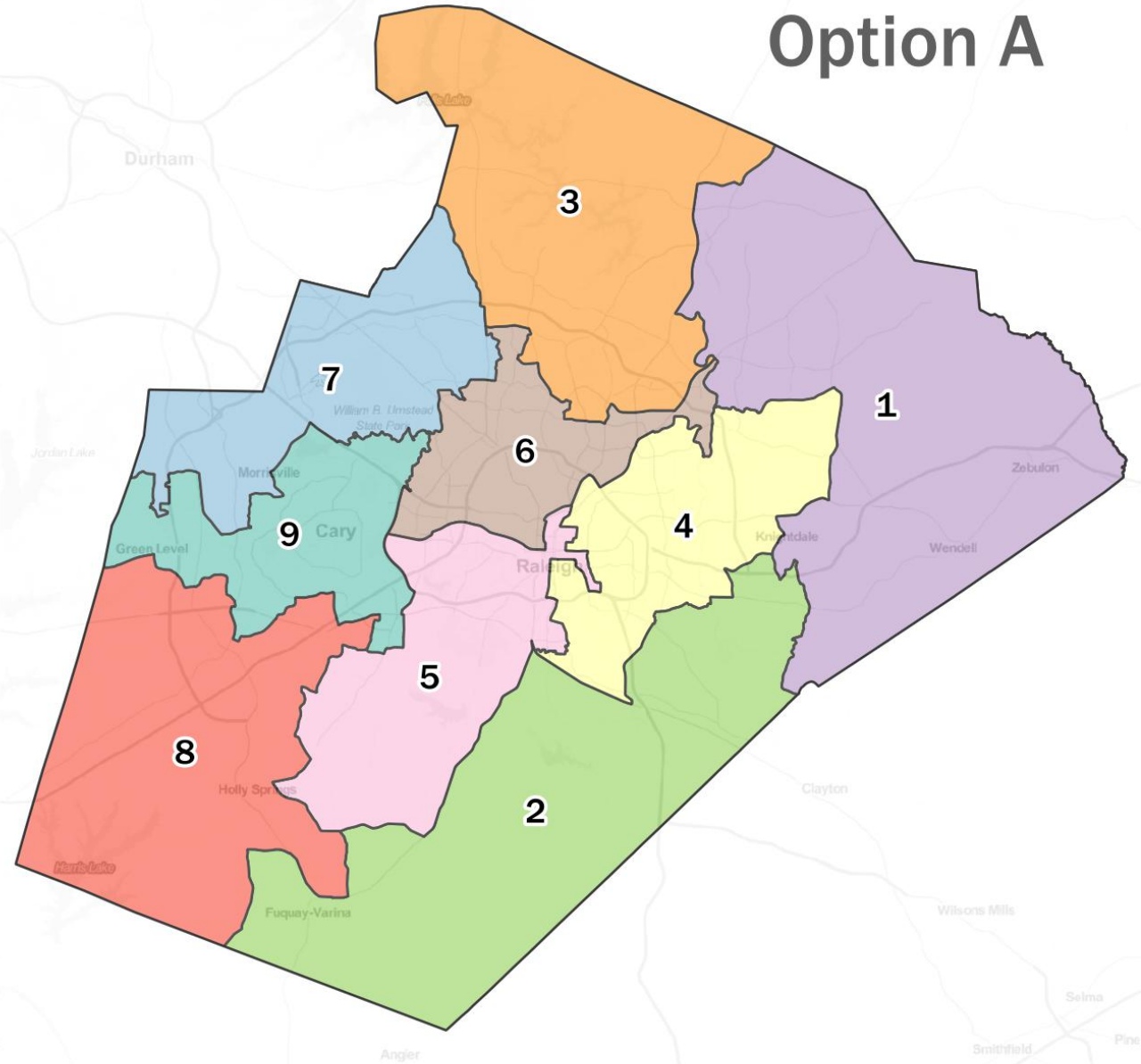
- Balancing area superintendents
- Striving to keep assignment districts intact, or at least reducing the number/extent of splits
- Balancing high schools across districts
- Consideration of neighborhoods and communities of interest
- Consideration of municipal jurisdictions

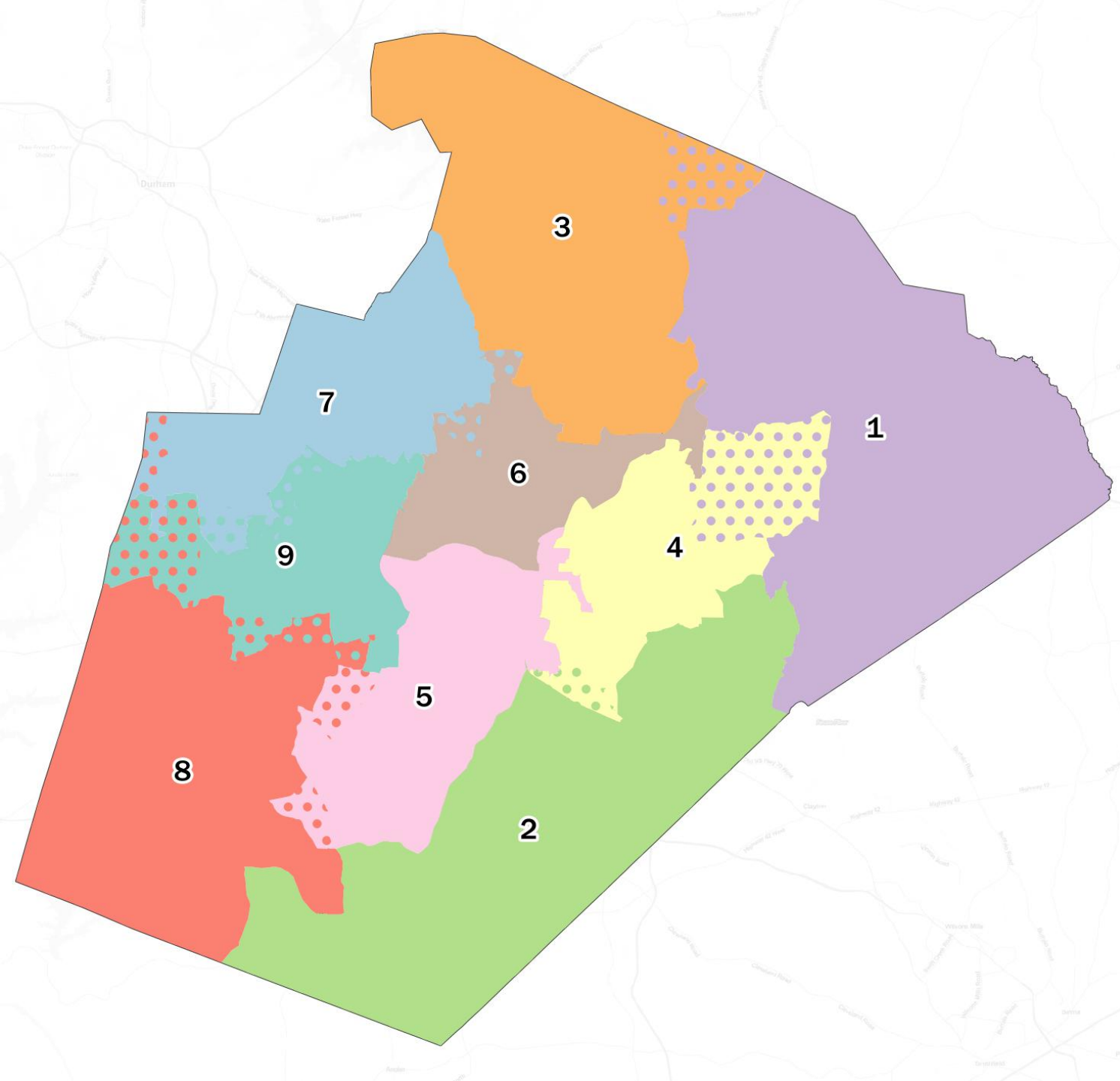


## Existing



## Option A





## Option A Changes

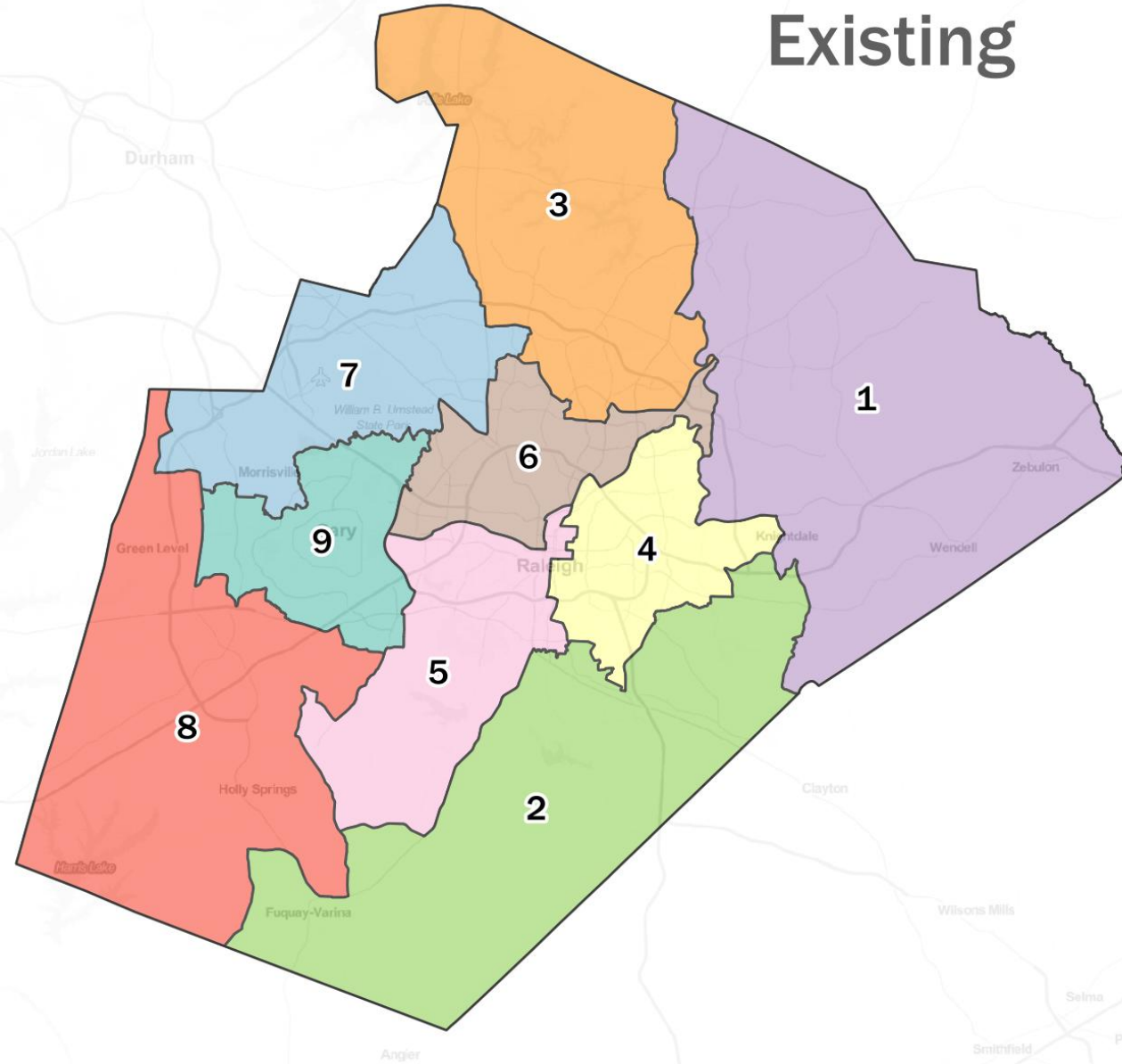
- Solid background colors represent the proposed district
- Dots represent the existing district
- If no dots are visible, no changes are proposed



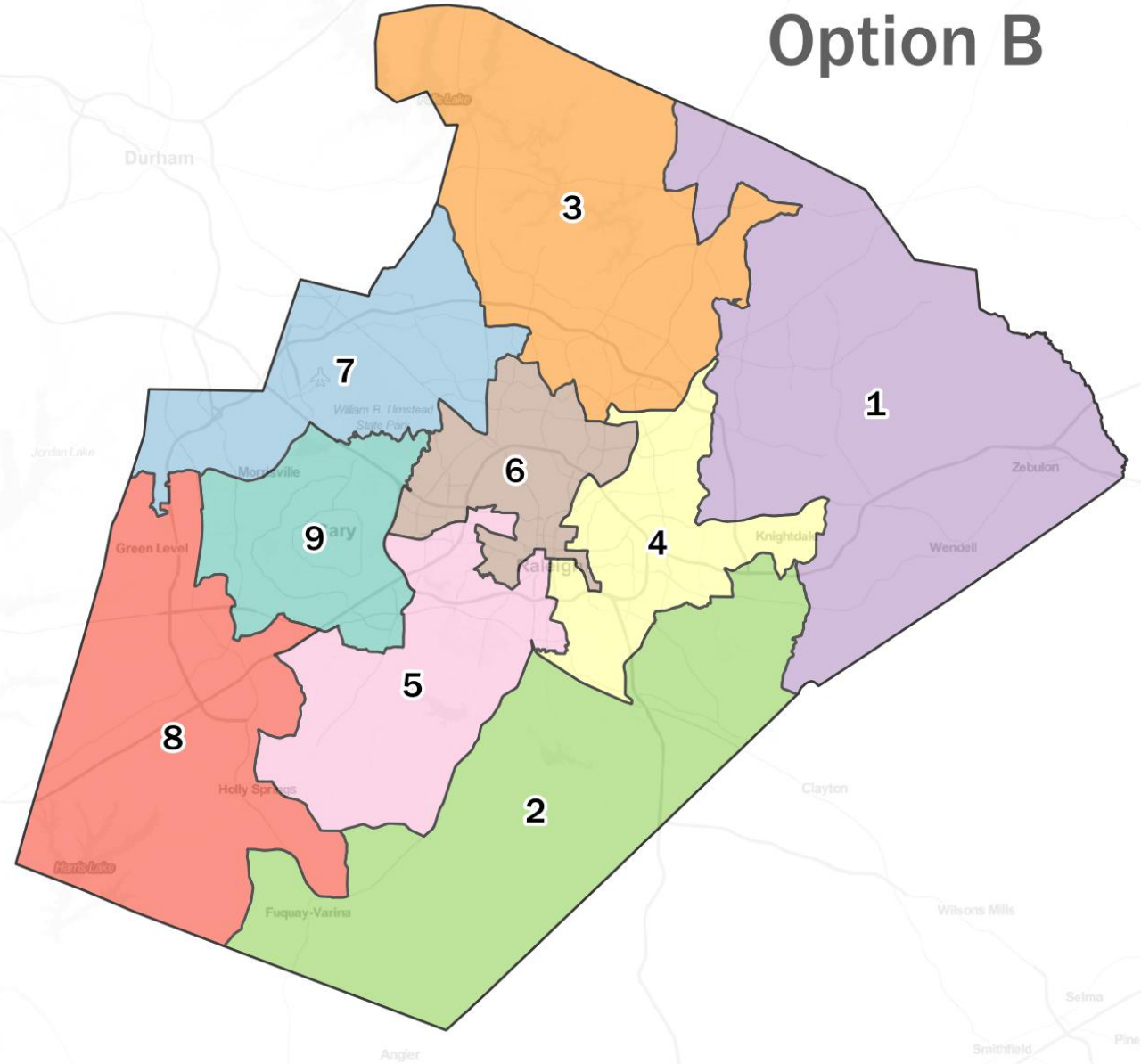
# Description of Changes in Option A

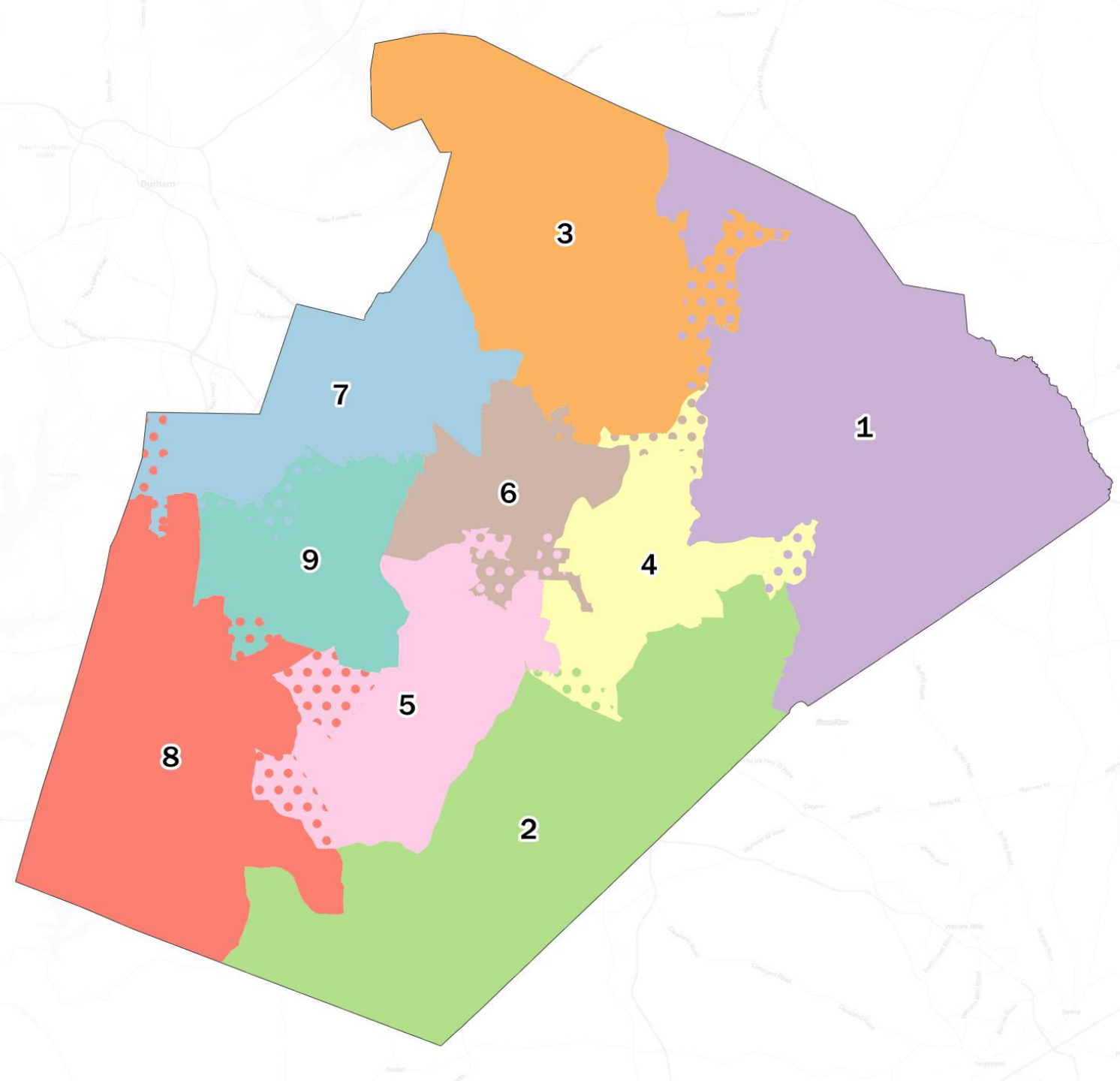
- ▶ Reduces D1's surplus of high schools
- ▶ D1 has just two area superintendents (instead of 3)
- ▶ Very little change to D2 (just resolving precinct split)
- ▶ D7 has only two area superintendents (though one has changed)
- ▶ D3, D7, and D9 increase their number of high schools (improving balance)
- ▶ The Knightdale municipality is more wholly in D4, not bisected as before
- ▶ Does divide Town of Wake Forest
- ▶ Does not address D5's surplus of area superintendent presence
- ▶ D5 continues to have more high schools than most districts

# Existing



# Option B





## Option B Changes

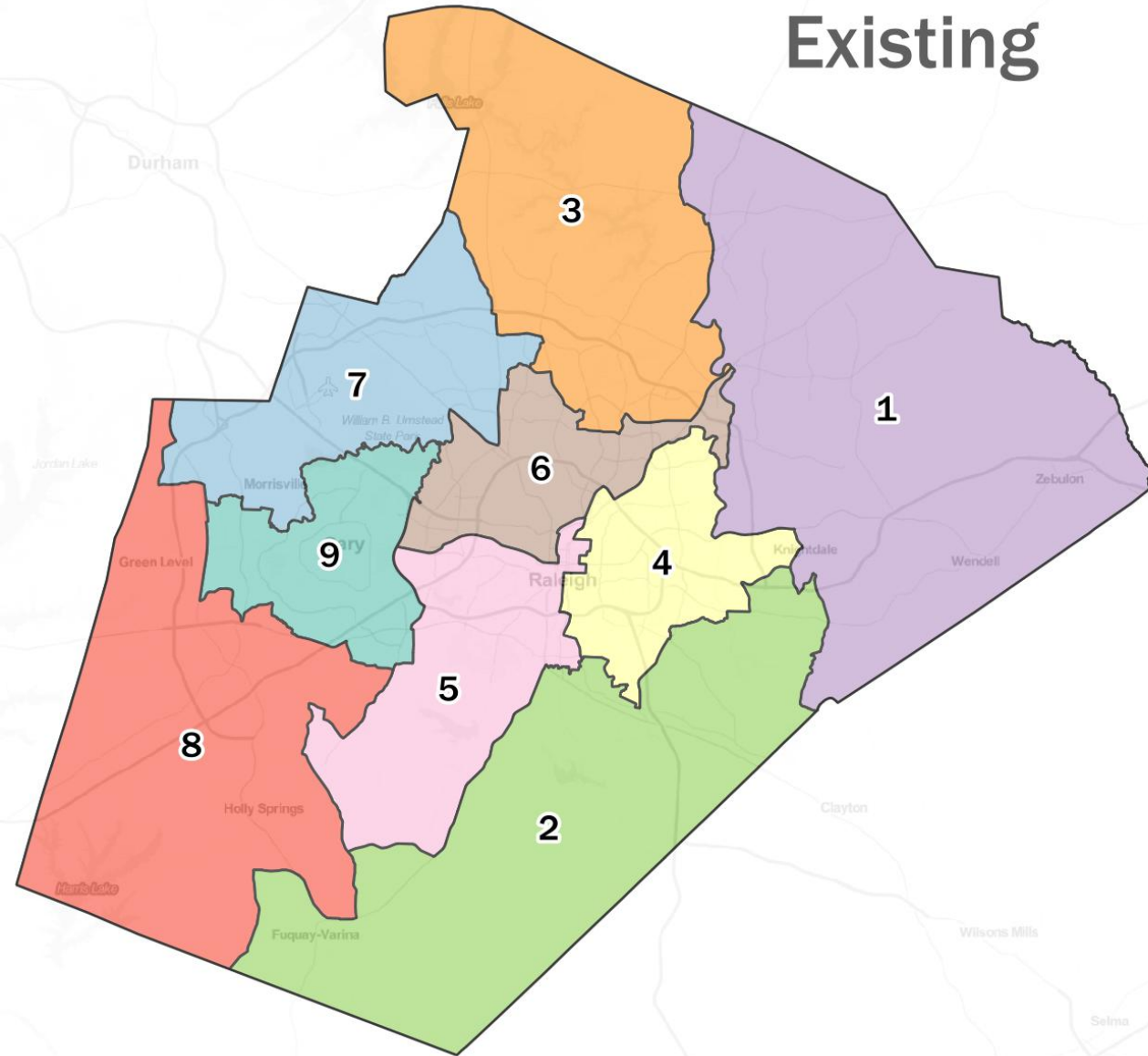
- Solid background colors represent the proposed district
- Dots represent the existing district
- If no dots are visible, no changes are proposed



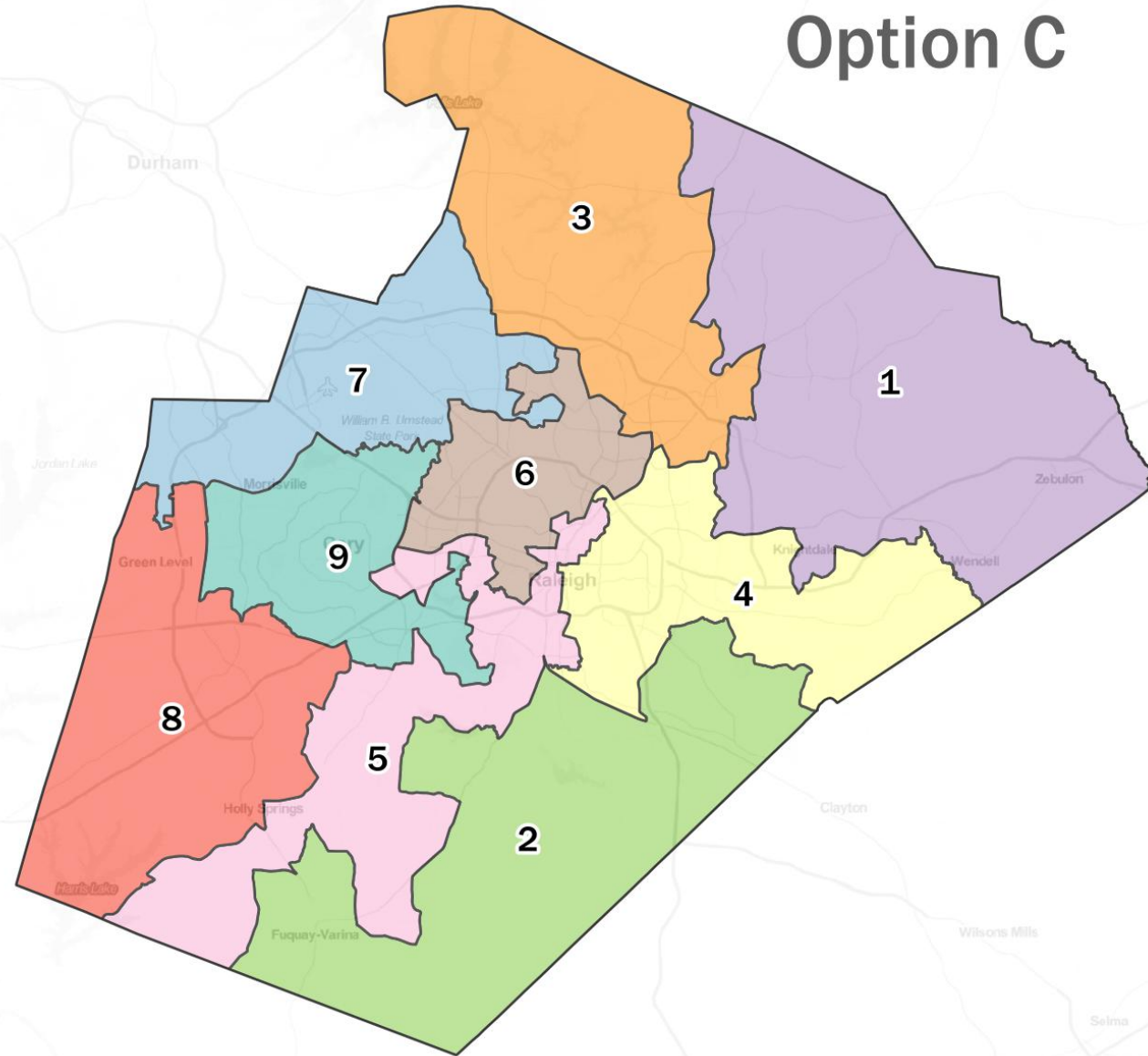
# Description of Changes in Option B

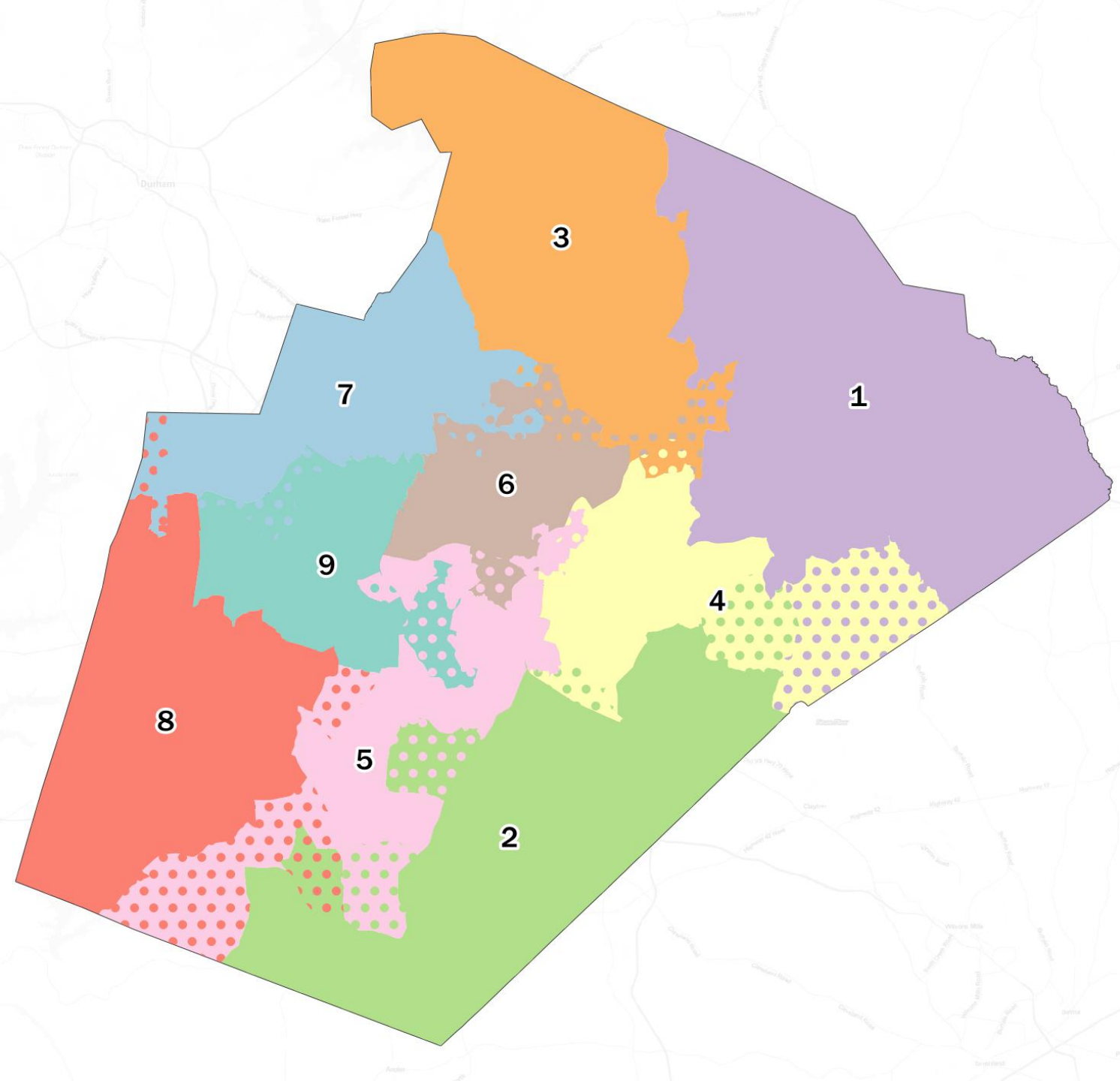
- ▶ Rolesville High attendance area in 3 districts (had been 4)
- ▶ D6 gets some of D5's surplus of high schools
- ▶ D3 gets two high schools from D1 surplus
- ▶ Minimal changes to D2 AND D7 (just resolving precinct splits)
- ▶ D5 has one fewer area superintendent
- ▶ Puts almost all of Green Hope High attendance area into D9 (greatly reduces amount of division)
- ▶ D8 no longer has attendance areas of Athens Drive High and Middle Creek High (they go into D5)
- ▶ Other improvements to high school balance (see table)
- ▶ Enloe High attendance area now in D6 (had been just in D4 & D5)
- ▶ Does divide the Heritage High attendance area (had been all in D1)
- ▶ D7 remains with just two high schools

# Existing



# Option C





## Option C Changes

- Solid background colors represent the proposed district
- Dots represent the existing district
- If no dots are visible, no changes are proposed

# Description of Changes in Option C

- ▶ Only two area superintendents in D1 (had been three)
- ▶ Rolesville High attendance area in three districts (down from four)
- ▶ Knightdale High attendance area in just two districts (vs. three now)
- ▶ Splits Wake Forest (municipality) less than Options A and B
- ▶ D2 no longer has tiny piece of Knightdale
- ▶ D5 goes from six area superintendents to four
- ▶ D9 gets one fewer area superintendent
- ▶ D8 no longer has fragment of Fuquay-Varina
- ▶ Middle Creek High and Fuquay-Varina High assignment areas each span one fewer district
- ▶ Other improvements to high school balance (see table)
- ▶ Does divide Wendell between D1 and D4
- ▶ D3, D5, and D6 get small pieces of additional attendance areas

# High Schools\* by District

Plan	District 1	District 2	District 3	District 4	District 5	District 6	District 7	District 8	District 9	Standard Deviation
Existing	6	3	2	6	7	3	2	5	4	1.75
Option A	3	3	4	7	7	3	3	3	5	1.62
Option B	4	3	4	7	4	5	2	4	5	1.31
Option C	5	4	4	7	4	3	3	3	5	1.23

\*Note that these numbers include academies and virtual/alternative programs. For example, District 4 contains SCORE Academy River Oaks, Longview School, and Mary E. Phillips High School—in all of the plans.

# Area Superintendents by District

Plan	District 1	District 2	District 3	District 4	District 5	District 6	District 7	District 8	District 9	Average	Standard Deviation
Existing	3	2	2	4	6	5	2	2	2	3.11	1.45
Option A	2	2	2	4	6	5	2	2	2	3.00	1.49
Option B	2	2	2	4	5	5	2	3	3	3.11	1.20
Option C	2	2	3	5	4	4	2	3	3	3.11	0.99



# Population Summary Report

District No.	TOTAL Population	Target Population	Target Deviation	Target Deviation (%)	Total (%)	Non-Hispanic Asian (%)	Non-Hispanic black (%)	Hispanic (%)	Non-Hispanic white (%)	Non-Hispanic some other race (%)	Non-Hispanic two or more minority race (%)
D1	142,445	125,490	16,955	13.51	12.61%	3.50%	24.14%	12.86%	56.28%	1.12%	0.87%
D2	124,239	125,490	-1,251	-1.00	11.00%	2.34%	23.18%	14.28%	56.97%	1.02%	0.73%
D3	113,388	125,490	-12,102	-9.64	10.04%	5.36%	18.52%	9.44%	63.78%	1.13%	0.73%
D4	113,533	125,490	-11,957	-9.53	10.05%	3.88%	46.95%	20.31%	26.16%	0.87%	1.04%
D5	114,489	125,490	-11,001	-8.77	10.14%	8.29%	16.67%	11.39%	60.50%	1.34%	0.65%
D6	116,905	125,490	-8,585	-6.84	10.35%	4.10%	15.50%	11.21%	66.70%	1.01%	0.59%
D7	128,682	125,490	3,192	2.54	11.39%	21.36%	13.50%	7.01%	55.34%	1.15%	0.69%
D8	166,760	125,490	41,270	32.89	14.77%	18.34%	8.23%	7.38%	63.11%	1.33%	0.55%
D9	108,969	125,490	-16,521	-13.17	9.65%	15.65%	8.59%	10.05%	62.74%	1.37%	0.63%

<b>TOTAL Population:</b>	<b>1,129,410</b>
Mean Target Population:	125,490
Mean Deviation:	13,648
Mean Percent Deviation:	10.88
Largest Positive Deviation:	41,270
Largest Negative Deviation:	-16,521
Overall Range in Deviation:	57,791
Overall Range in Deviation Percentage:	46.05

## Existing Districts

# Population Summary Report

District No.	TOTAL Population	Target Population	Target Deviation	Target Deviation (%)	Total (%)	Non-Hispanic Asian (%)	Non-Hispanic black (%)	Hispanic (%)	Non-Hispanic white (%)	Non-Hispanic some other race (%)	Non-Hispanic two or more minority race (%)
D1	119,306	125,490	-6,184	-4.93	10.56%	3.45%	24.07%	12.79%	56.46%	1.14%	0.84%
D2	120,323	125,490	-5,167	-4.12	10.65%	2.34%	22.74%	14.02%	57.69%	1.03%	0.71%
D3	124,650	125,490	-840	-0.67	11.04%	5.22%	17.88%	9.26%	64.77%	1.11%	0.73%
D4	127,741	125,490	2,251	1.79	11.31%	3.84%	45.50%	20.36%	27.46%	0.90%	1.06%
D5	127,055	125,490	1,565	1.25	11.25%	8.08%	16.23%	10.78%	61.80%	1.34%	0.63%
D6	127,925	125,490	2,435	1.94	11.33%	4.10%	15.29%	10.91%	67.23%	1.00%	0.57%
D7	131,024	125,490	5,534	4.41	11.60%	24.40%	13.26%	6.82%	52.66%	1.20%	0.72%
D8	121,425	125,490	-4,065	-3.24	10.75%	11.72%	8.42%	7.98%	68.78%	1.36%	0.54%
D9	129,961	125,490	4,471	3.56	11.51%	21.31%	8.40%	9.45%	58.00%	1.31%	0.62%

<b>TOTAL Population:</b>	<b>1,129,410</b>
Mean Target Population:	125,490
Mean Deviation:	3,612
Mean Percent Deviation:	2.88
Largest Positive Deviation:	5,534
Largest Negative Deviation:	-6,184
Overall Range in Deviation:	11,718
Overall Range in Deviation Percentage:	9.34

Option A



# Population Summary Report

District No.	TOTAL Population	Target Population	Target Deviation	Target Deviation (%)	Total (%)	Non-Hispanic Asian (%)	Non-Hispanic black (%)	Hispanic (%)	Non-Hispanic white (%)	Non-Hispanic some other race (%)	Non-Hispanic two or more minority race (%)
D1	121,041	125,490	-4,449	-3.55	10.72%	3.30%	25.25%	13.26%	54.97%	1.08%	0.88%
D2	120,323	125,490	-5,167	-4.12	10.65%	2.34%	22.74%	14.02%	57.69%	1.03%	0.71%
D3	127,641	125,490	2,151	1.71	11.30%	5.34%	17.97%	9.25%	64.52%	1.15%	0.71%
D4	129,616	125,490	4,126	3.29	11.48%	3.98%	45.52%	20.89%	26.83%	0.90%	1.06%
D5	125,971	125,490	481	0.38	11.15%	7.87%	14.38%	10.69%	63.91%	1.41%	0.62%
D6	127,364	125,490	1,874	1.49	11.28%	4.81%	14.57%	9.50%	68.58%	1.04%	0.56%
D7	126,883	125,490	1,393	1.11	11.23%	21.75%	13.93%	7.05%	54.46%	1.12%	0.73%
D8	119,915	125,490	-5,575	-4.44	10.62%	18.18%	8.16%	8.01%	62.69%	1.32%	0.53%
D9	130,656	125,490	5,166	4.12	11.57%	18.02%	8.54%	9.43%	61.09%	1.35%	0.61%

<b>TOTAL Population:</b>	<b>1,129,410</b>
Mean Target Population:	125,490
Mean Deviation:	3,376
Mean Percent Deviation:	2.69
Largest Positive Deviation:	5,166
Largest Negative Deviation:	-5,575
Overall Range in Deviation:	10,741
Overall Range in Deviation Percentage:	8.56

# Option B

# Population Summary Report

District No.	TOTAL Population	Target Population	Target Deviation	Target Deviation (%)	Total (%)	Non-Hispanic Asian (%)	Non-Hispanic black (%)	Hispanic (%)	Non-Hispanic white (%)	Non-Hispanic some other race (%)	Non-Hispanic two or more minority race (%)
D1	119,276	125,490	-6,214	-4.95	10.56%	3.54%	22.64%	12.41%	58.16%	1.14%	0.87%
D2	119,532	125,490	-5,958	-4.75	10.58%	2.44%	22.29%	13.49%	58.56%	1.05%	0.71%
D3	124,284	125,490	-1,206	-0.96	11.00%	5.82%	21.72%	12.14%	57.43%	1.11%	0.78%
D4	126,434	125,490	944	0.75	11.19%	3.14%	45.75%	19.47%	28.89%	0.87%	1.02%
D5	127,439	125,490	1,949	1.55	11.28%	6.96%	14.74%	11.09%	64.00%	1.37%	0.64%
D6	129,539	125,490	4,049	3.23	11.47%	4.95%	14.38%	10.26%	67.88%	1.03%	0.55%
D7	131,684	125,490	6,194	4.94	11.66%	21.06%	14.03%	6.95%	55.11%	1.14%	0.73%
D8	120,630	125,490	-4,860	-3.87	10.68%	18.94%	7.37%	7.38%	63.39%	1.35%	0.55%
D9	130,592	125,490	5,102	4.07	11.56%	18.05%	9.11%	9.29%	60.65%	1.34%	0.60%

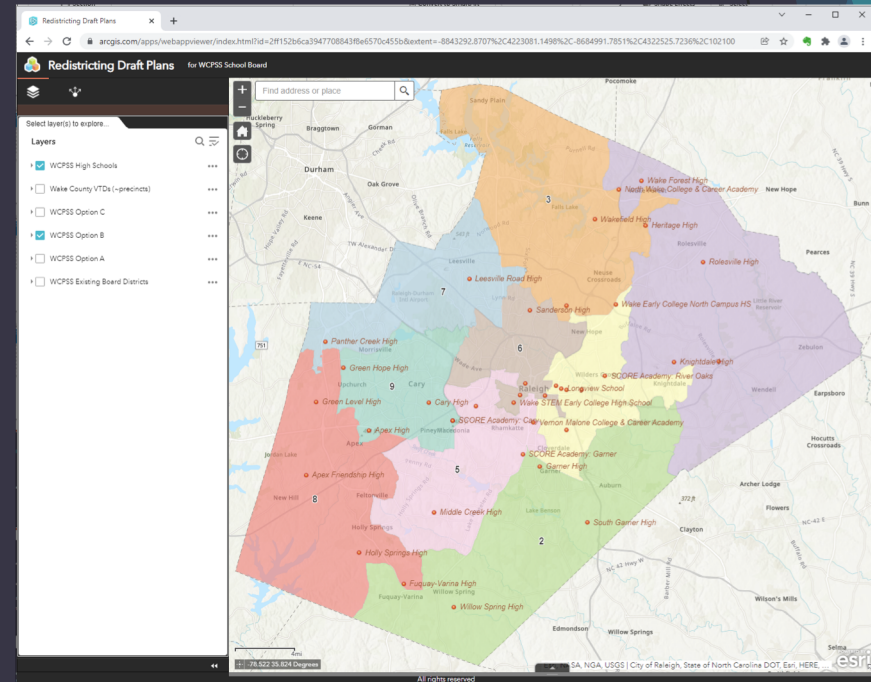
<b>TOTAL Population:</b>	<b>1,129,410</b>
Mean Target Population:	125,490
Mean Deviation:	4,053
Mean Percent Deviation:	3.23
Largest Positive Deviation:	6,194
Largest Negative Deviation:	-6,214
Overall Range in Deviation:	12,408
Overall Range in Deviation Percentage:	9.89

Option C

Interactive online map of the plans  
can be viewed at:  
<https://arcg.is/1PX0yr0>

The web-based map allows you to:

- Zoom fully in and out
- Pan around the map while zoomed in
- Search for a specific address or landmark
- Turn layers on and off to compare plans
- See locations of high schools



Questions and discussion welcomed!