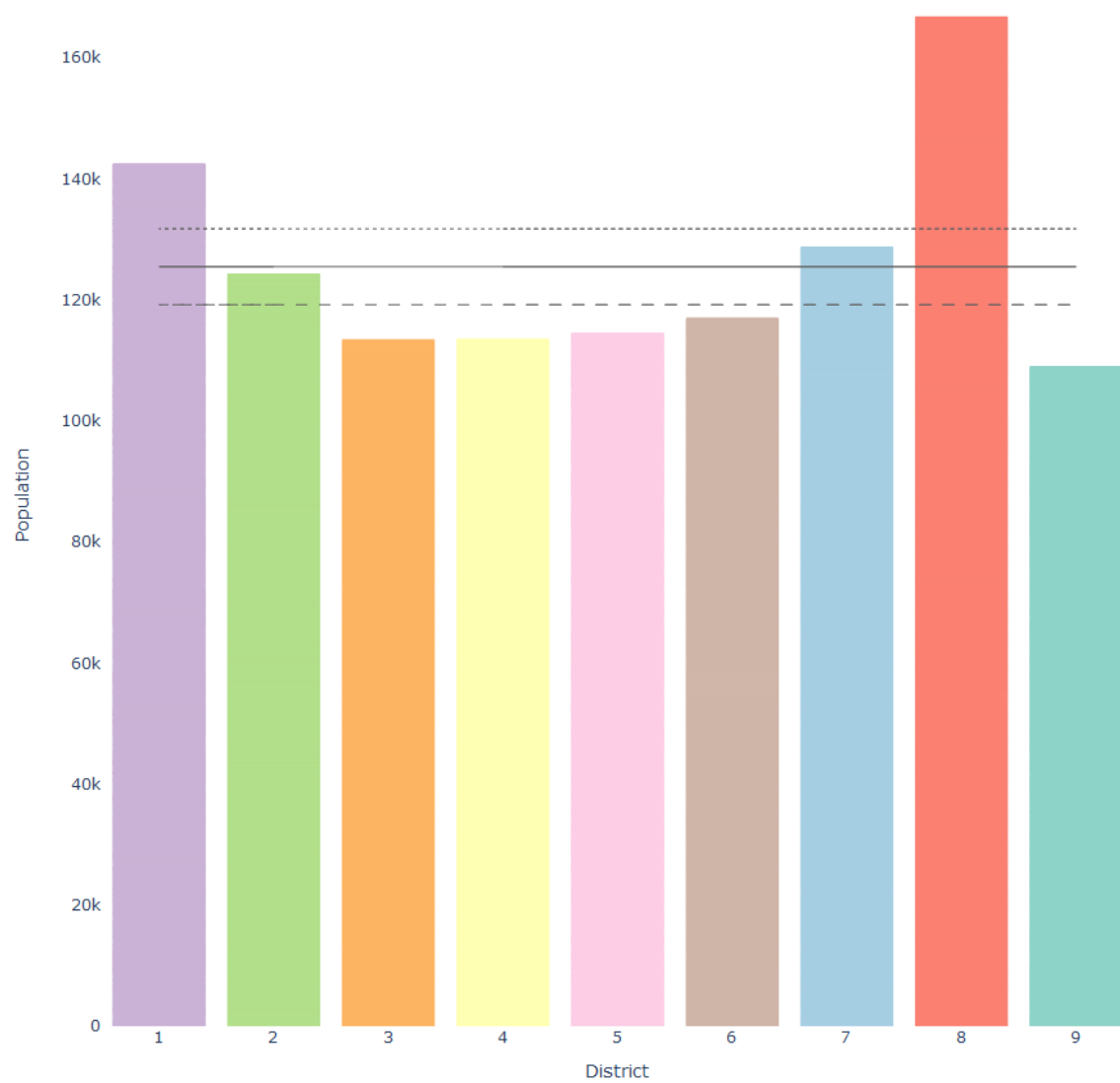
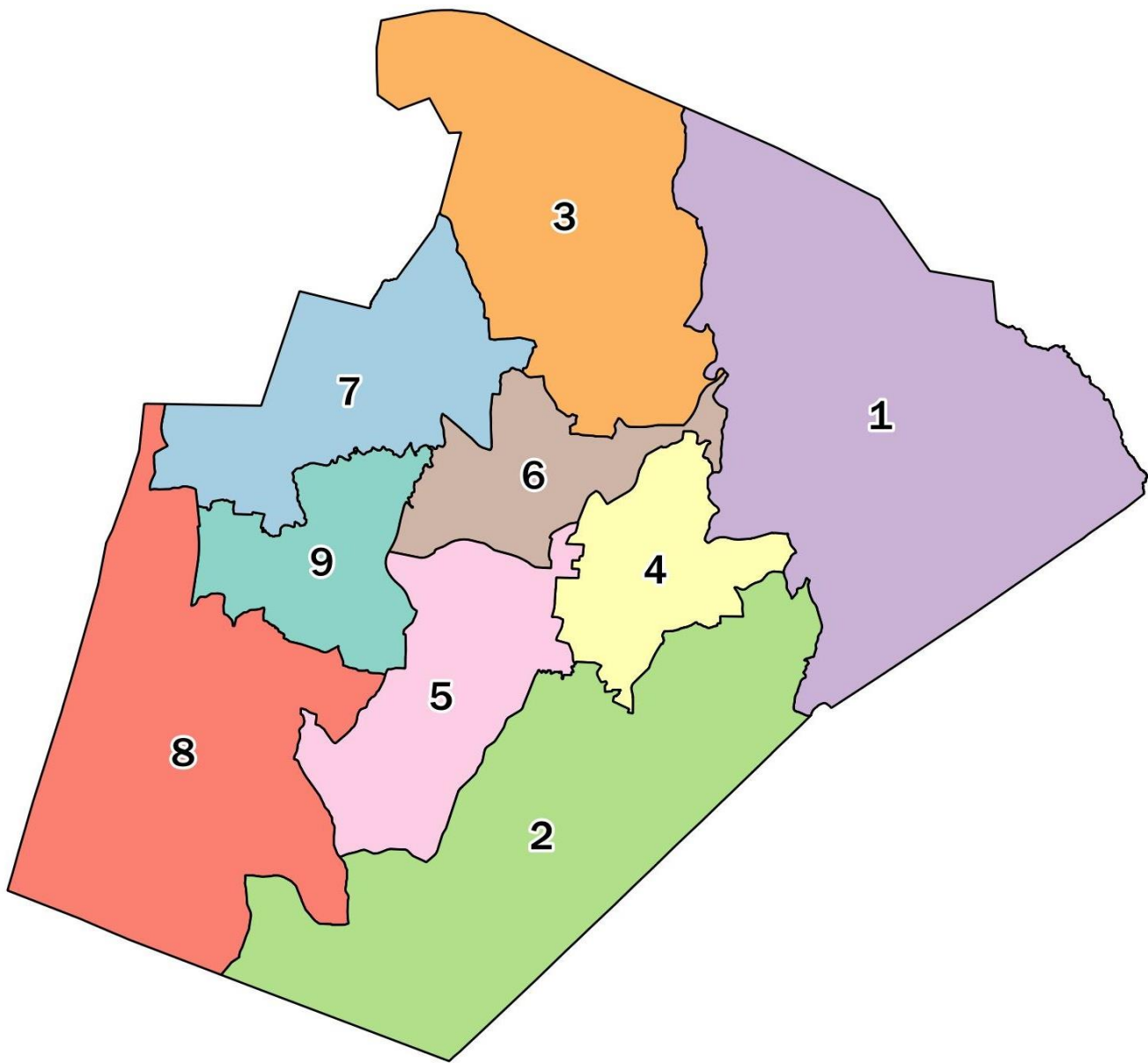


Redistricting Draft Plans

Adam Mitchell
Tharrington Smith, LLP

Blake Esselstyn
Mapfigure Consulting

WAKE COUNTY PUBLIC SCHOOL SYSTEM
February 1, 2022



Foundational Criteria Satisfied in All Draft Plans

- Population equality
- Consideration of the Federal Voting Rights Act
- Contiguity
- All split census blocks resolved (and no split blocks introduced)
- (Partisan election data were *not* considered.)

Traditional Discretionary Principles

1. Preservation of the cores of existing districts (minimizing change)
2. Consideration of the home addresses/precincts of incumbents
3. Using precincts as building blocks and keeping them intact
4. Consideration of municipalities
5. Compactness
6. Following major physical features as boundaries when possible (e.g., major roads, railroad tracks, waterbodies)
7. Preserving communities of interest (can be neighborhoods, or other areas with shared demographic, cultural, historic, or economic characteristics).
8. Taking into account post-census development and population growth when balancing populations of districts (all still must be within $\pm 5\%$ of ideal)
9. Consideration of other administrative areas (if this is chosen, should specify which: e.g., ZIP codes, watersheds, Sheriff zones, voluntary agricultural districts)
10. Consideration of the locations of schools

Selected Discretionary Principles

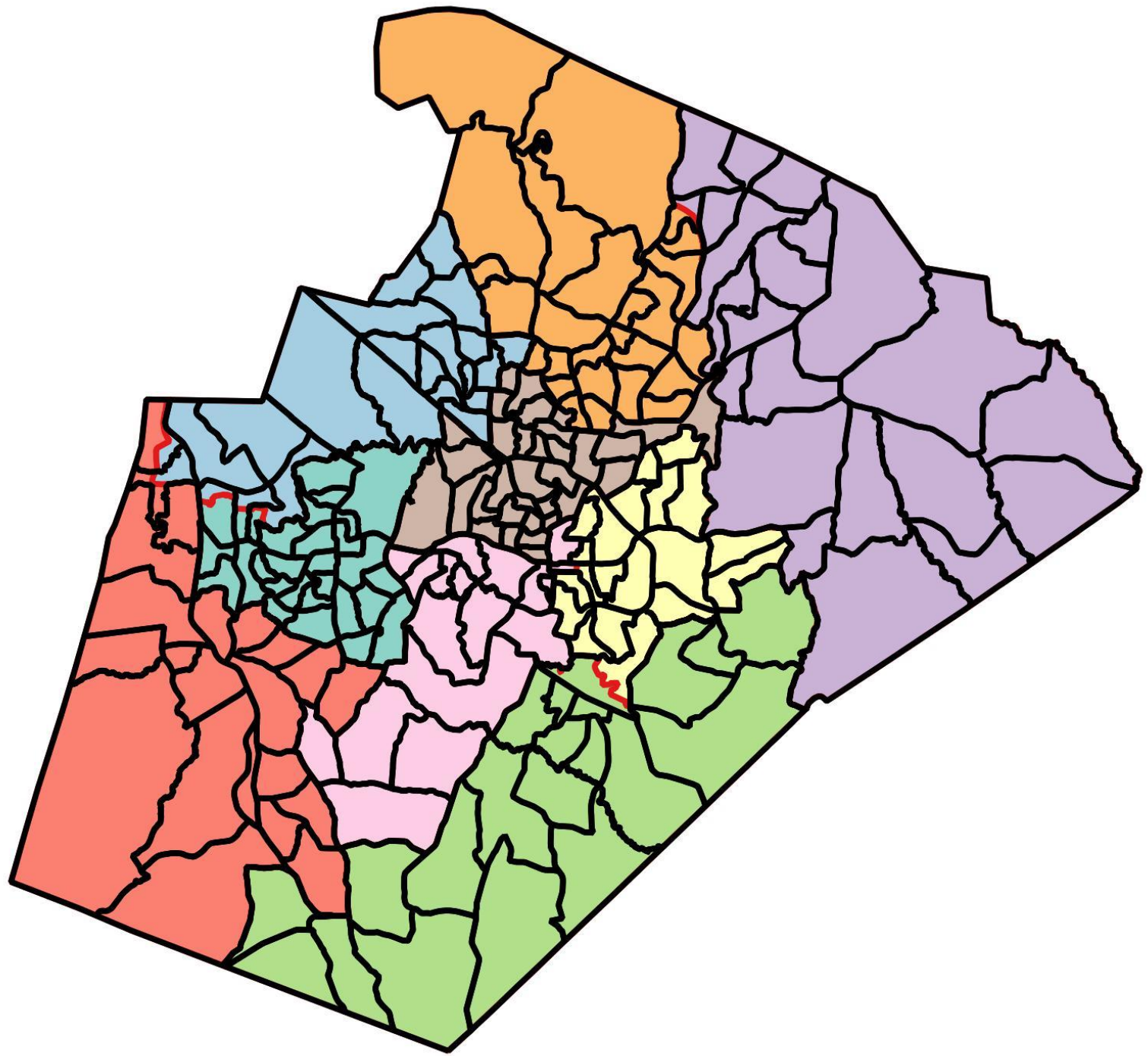
1. Preservation of the cores of existing districts (minimizing change)
2. Consideration of the home addresses/precincts of incumbents
3. Using precincts as building blocks and keeping them intact
4. Consideration of municipalities
5. Compactness
6. Following major physical features as boundaries when possible (e.g., major roads, railroad tracks, waterbodies)
7. Preserving communities of interest (can be neighborhoods, or other areas with shared demographic, cultural, historic, or economic characteristics).
8. Taking into account post-census development and population growth when balancing populations of districts (all still must be within $\pm 5\%$ of ideal)
9. Consideration of other administrative areas (if this is chosen, should specify which: e.g., ZIP codes, watersheds, Sheriff zones, voluntary agricultural districts)
10. Consideration of the locations of schools

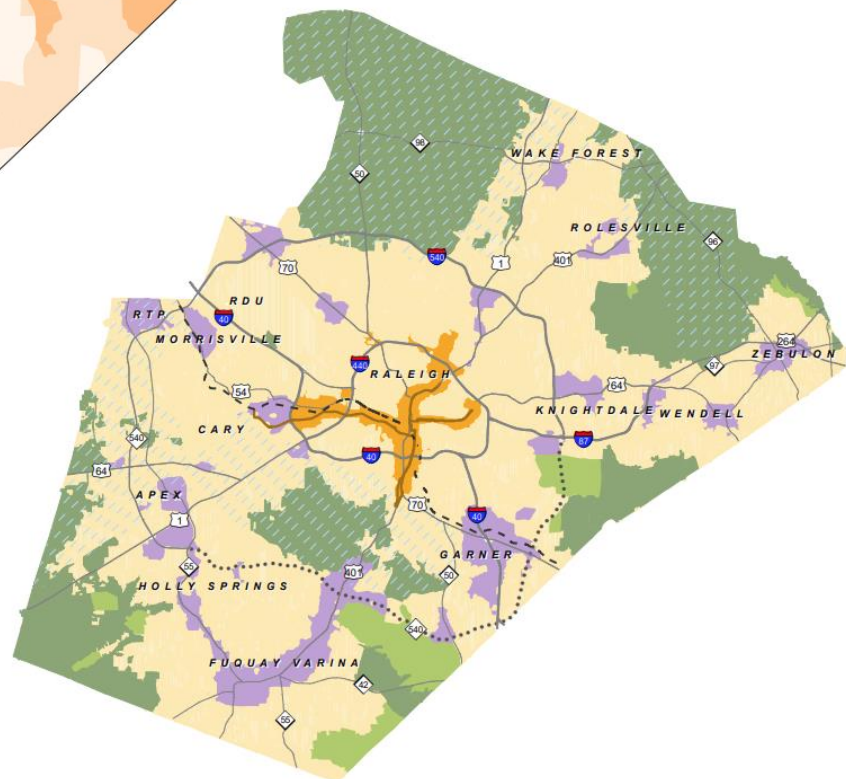
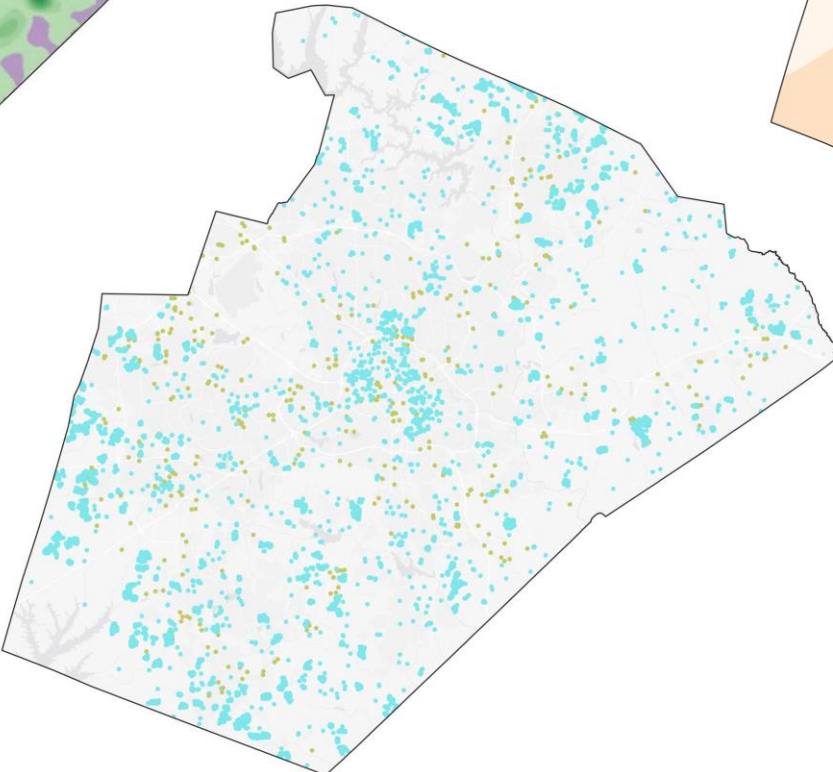
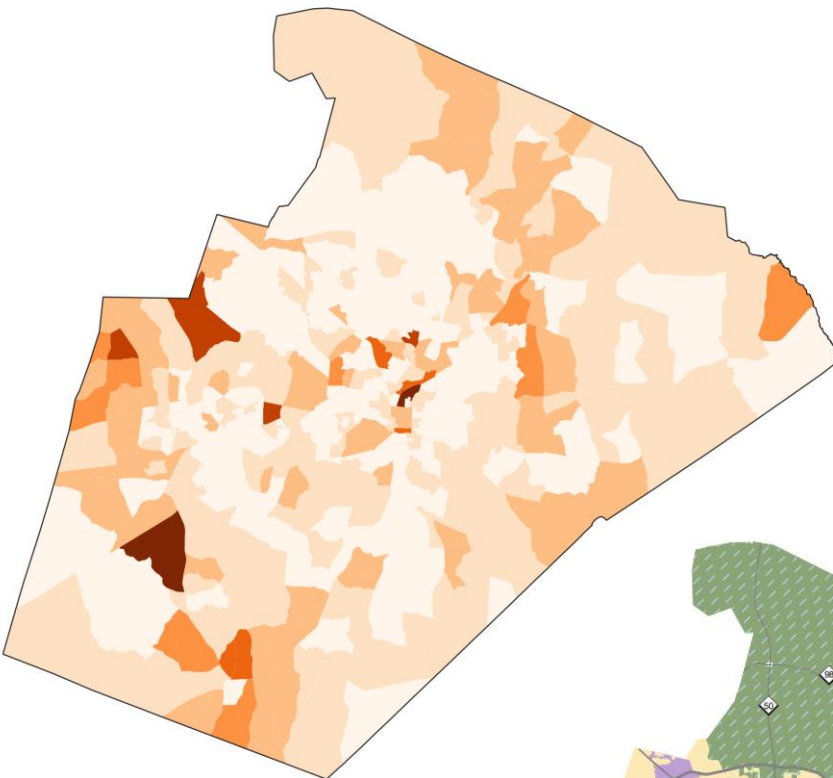
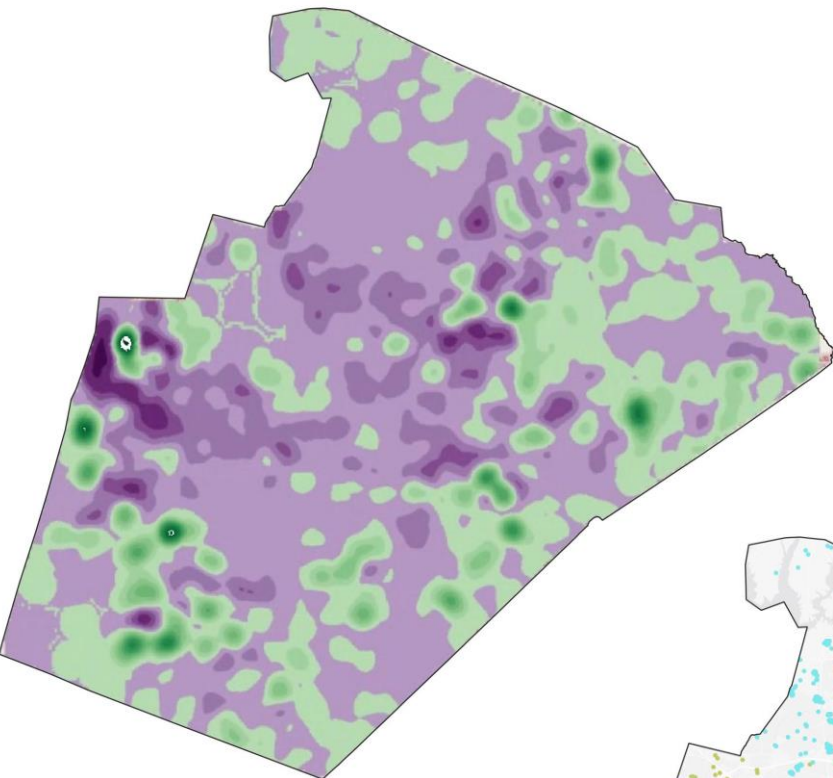
Selected Discretionary Principles

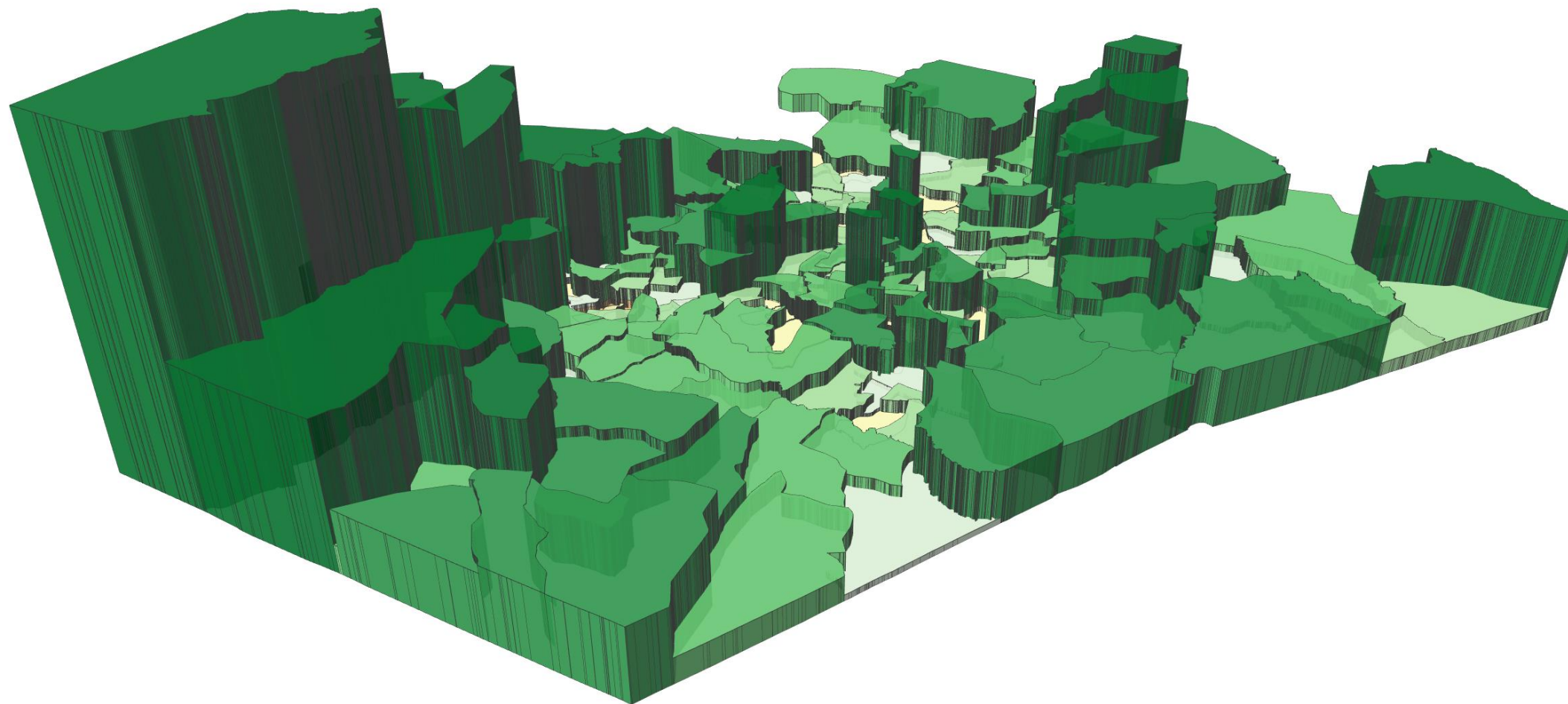
1. Preservation of the cores of existing districts (minimizing change)
2. Consideration of the home addresses/precincts of incumbents
3. Using precincts as building blocks and keeping them intact
4. Consideration of municipalities
5. ~~Compactness~~
6. ~~Following major physical features as boundaries when possible (e.g., major roads, railroad tracks, waterbodies)~~
7. Preserving communities of interest (can be neighborhoods, or other areas with shared demographic, cultural, historic, or economic characteristics).
8. Taking into account post-census development and population growth when balancing populations of districts (all still must be within $\pm 5\%$ of ideal)
9. Consideration of other administrative areas (if this is chosen, should specify which: e.g., ZIP codes, watersheds, Sheriff zones, voluntary agricultural districts)
10. Consideration of the locations of schools

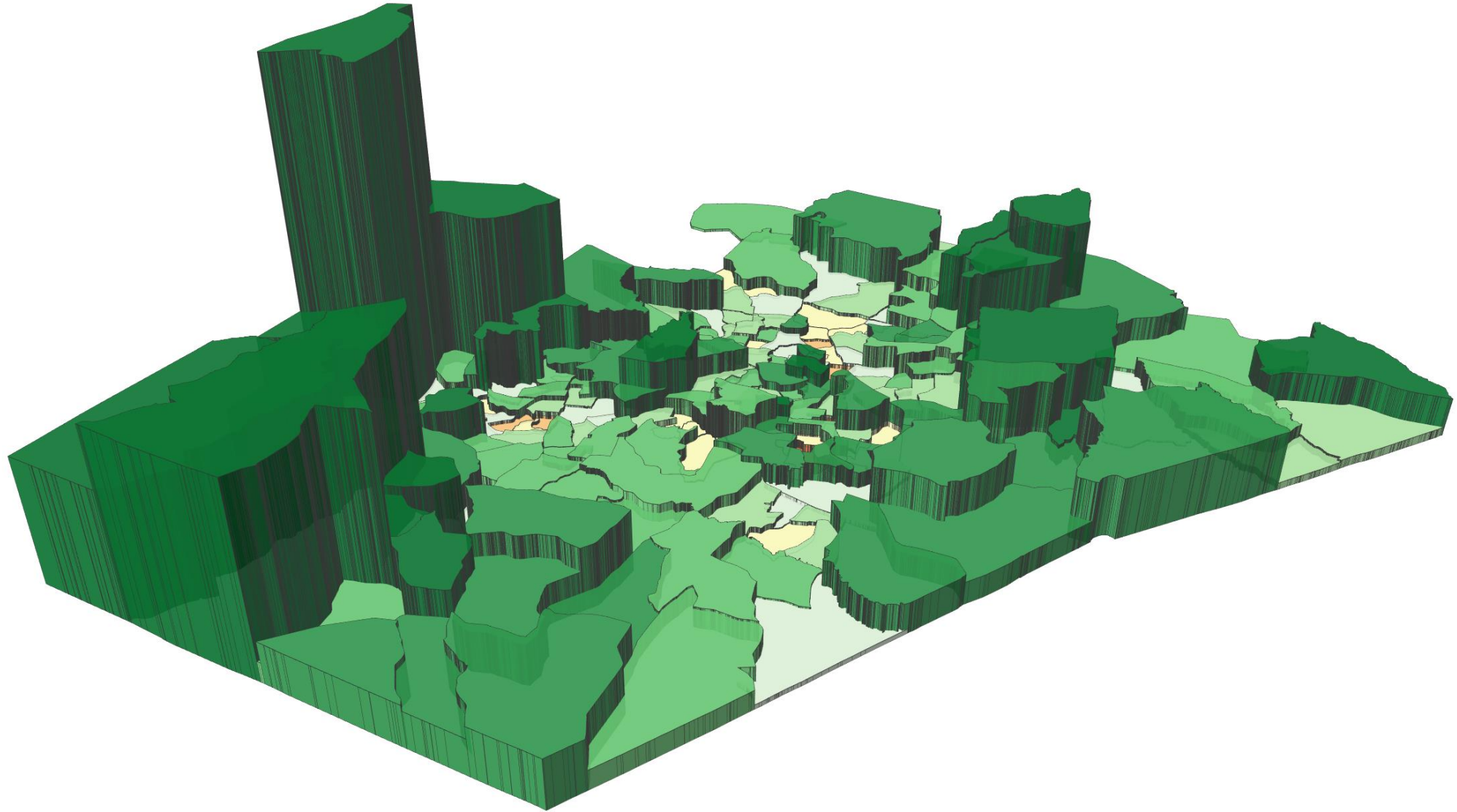
Higher-Tier (Fully Applied) Criteria Satisfied in All Draft Plans

- Using the existing districts as a starting point and striving to preserve their cores
- Using precincts/VTDs as building blocks and keeping them intact (zero precinct splits in any draft plan)
- Avoiding the pairing of incumbents in the same district
- Taking into account expected growth





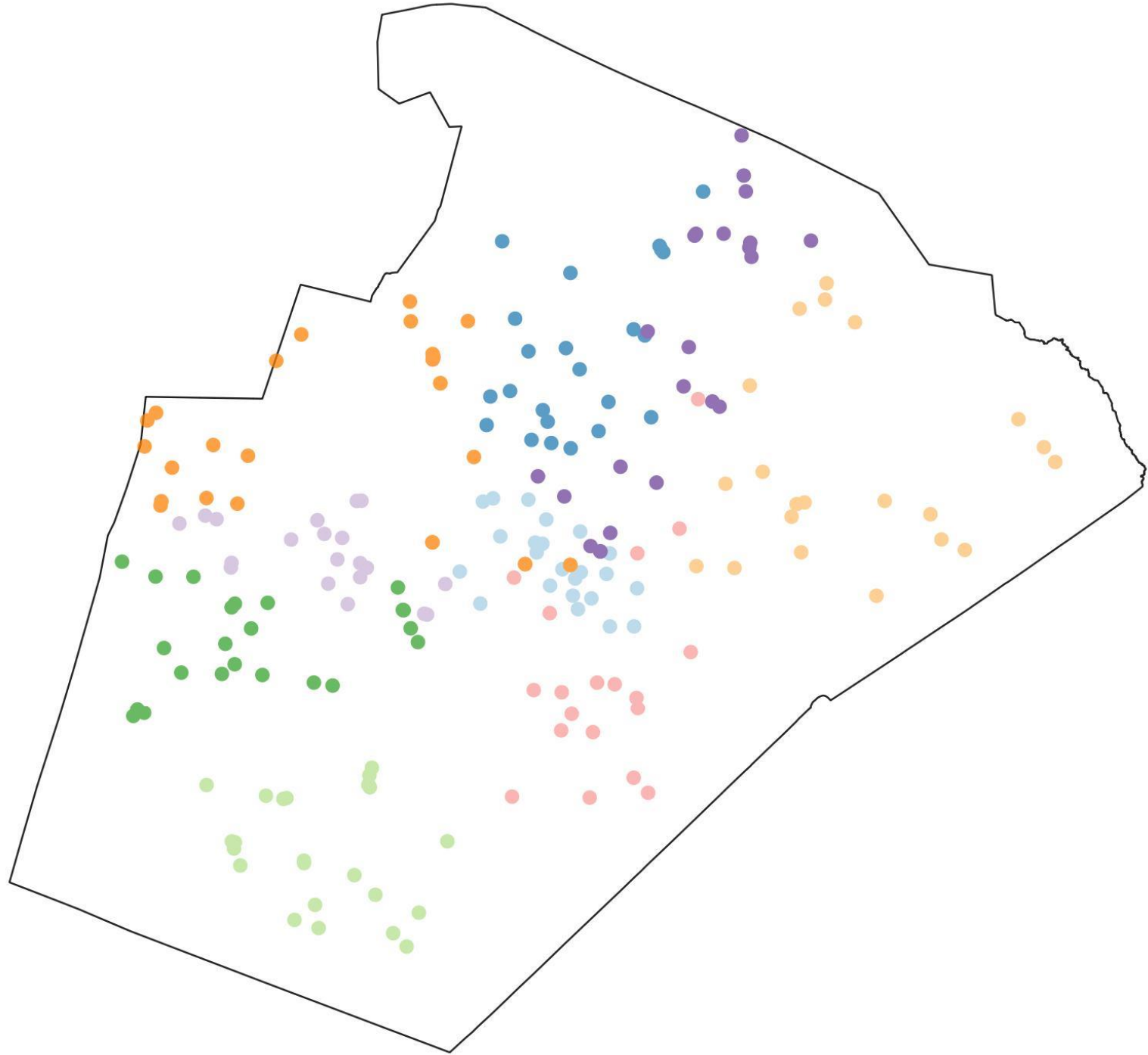


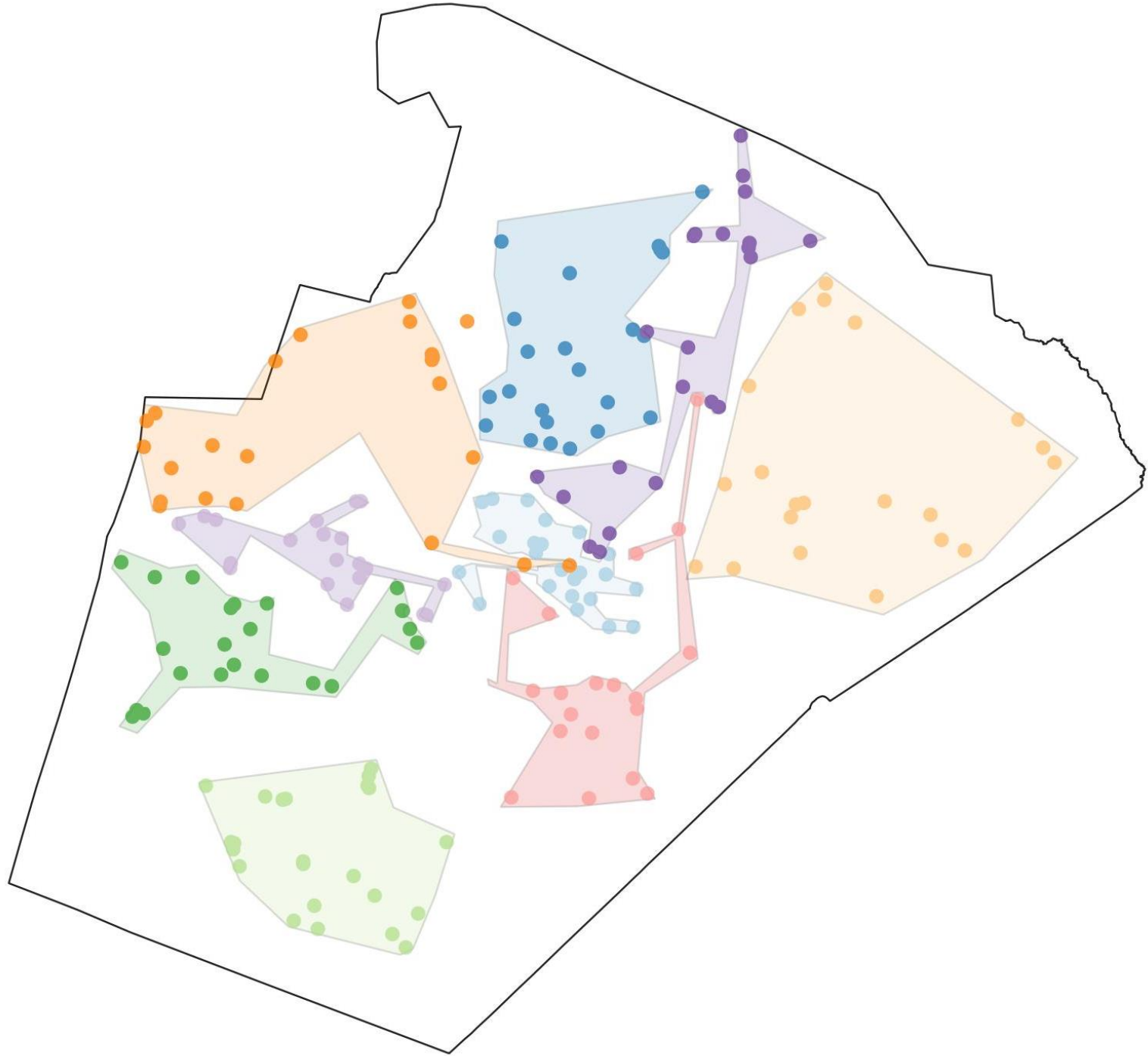


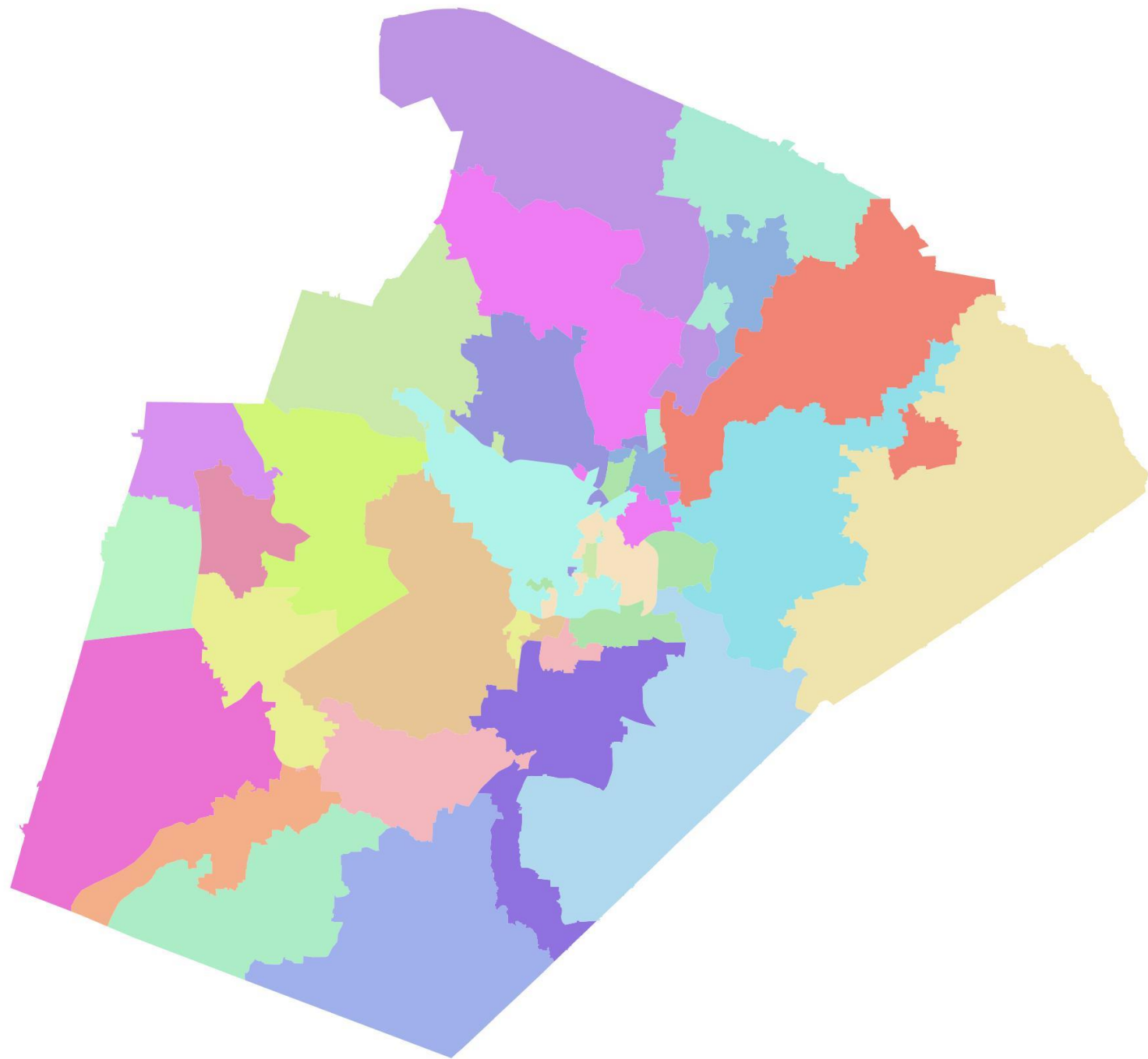
Next-Tier Criteria Applied to the Extent Possible (Tradeoffs Inevitable)

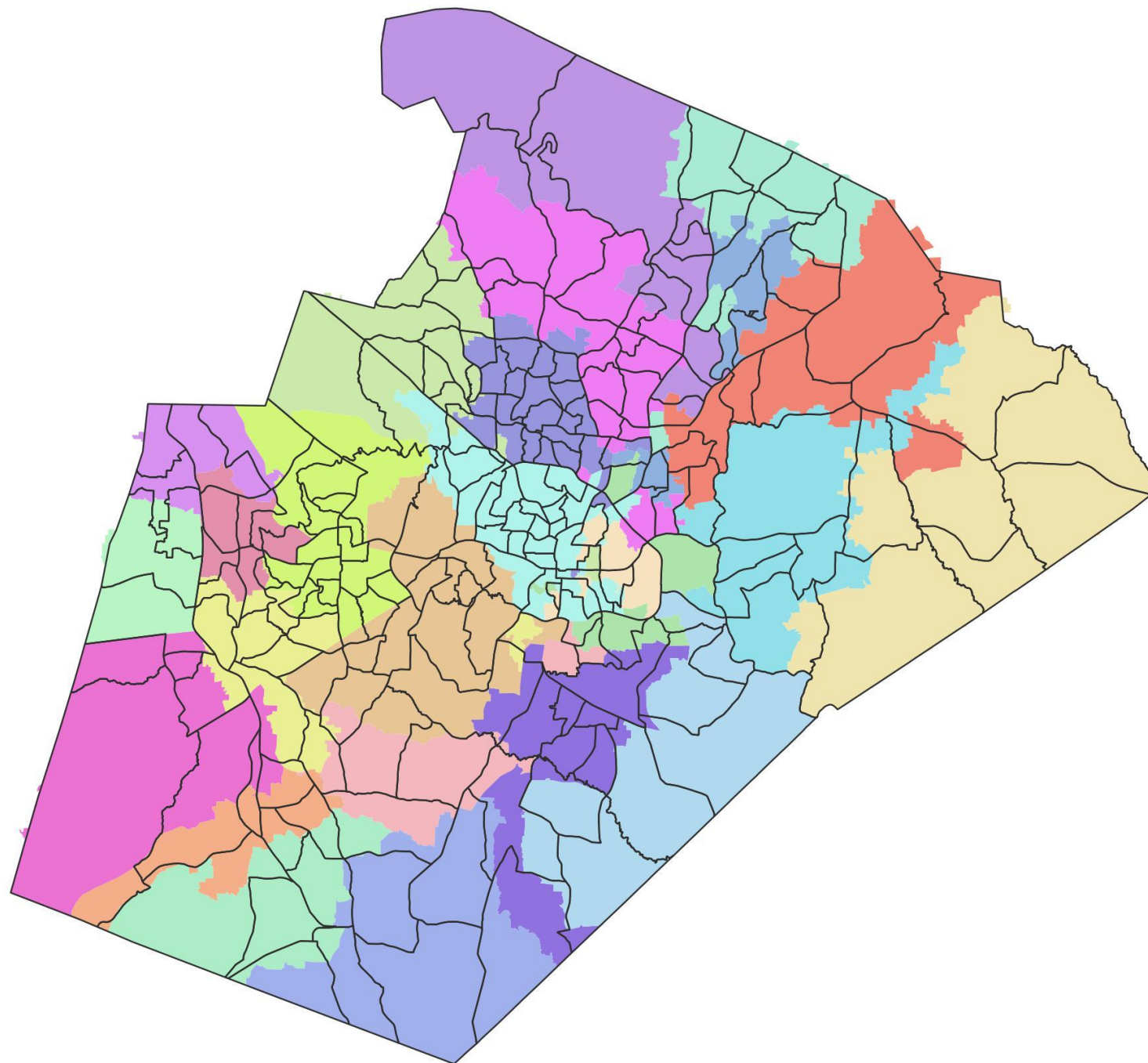
- Balancing area superintendents
- Striving to keep assignment districts intact, or at least reducing the number/extent of splits
- Balancing high schools across districts
- Consideration of neighborhoods and communities of interest
- Consideration of municipal jurisdictions

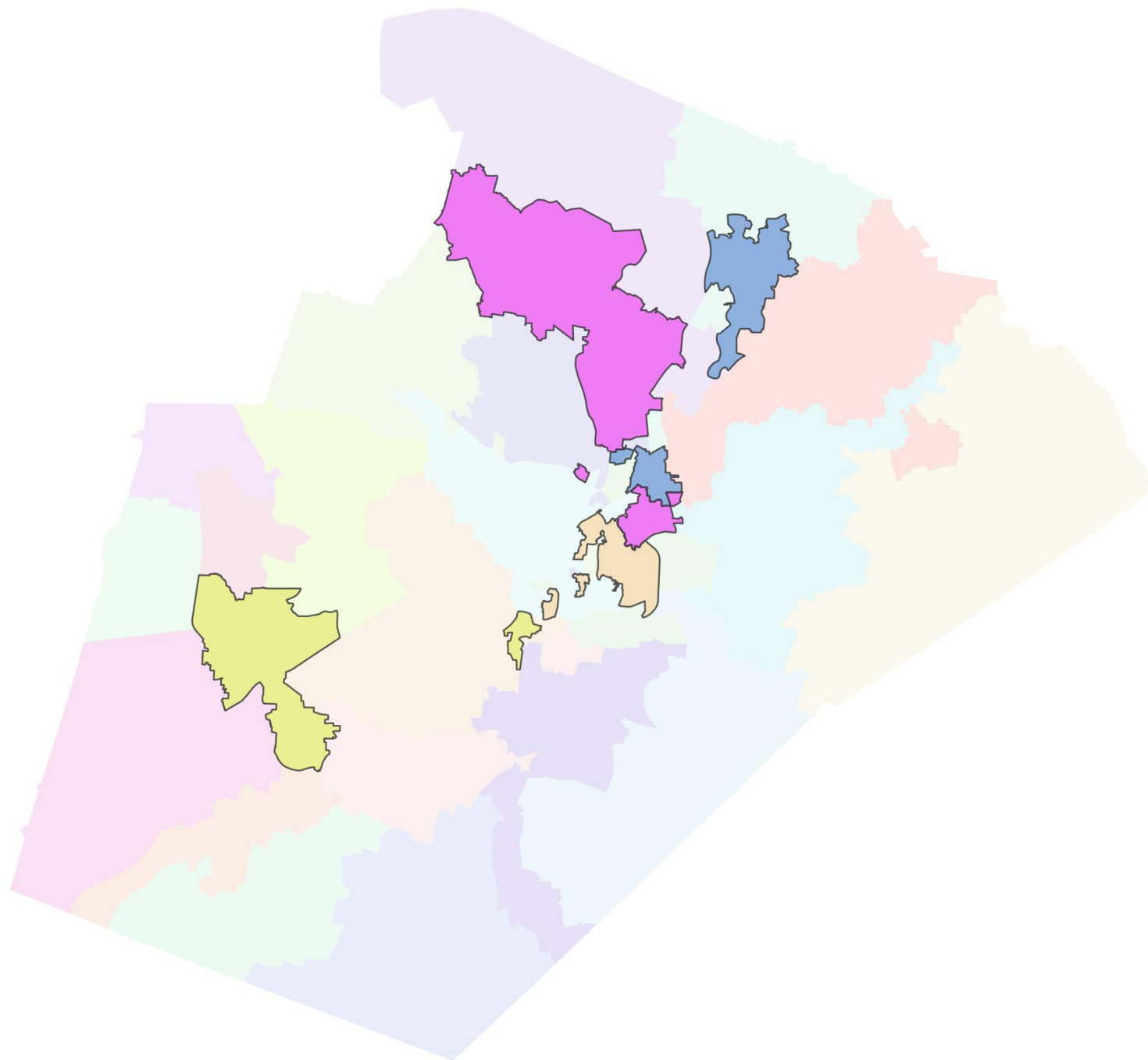


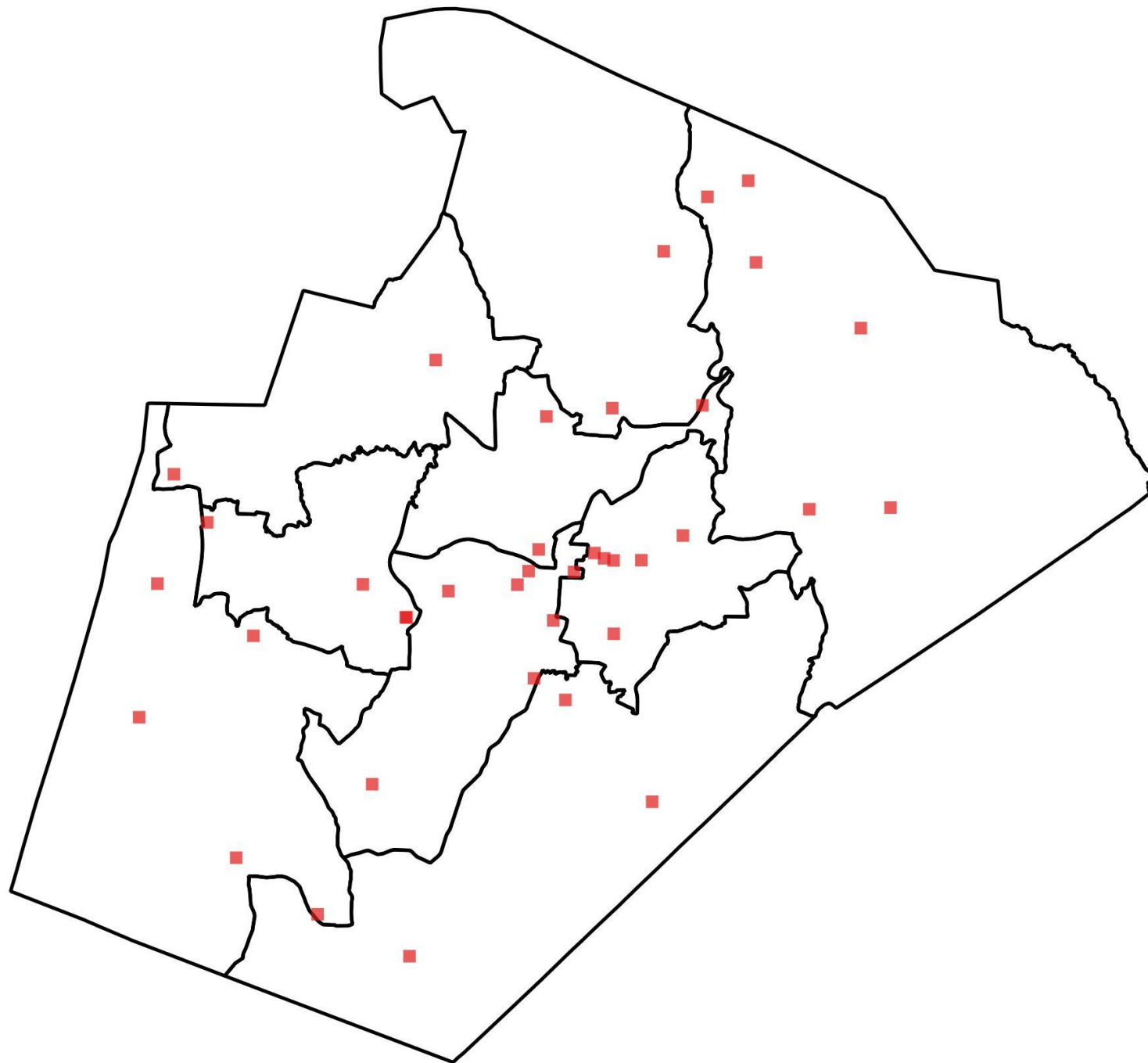




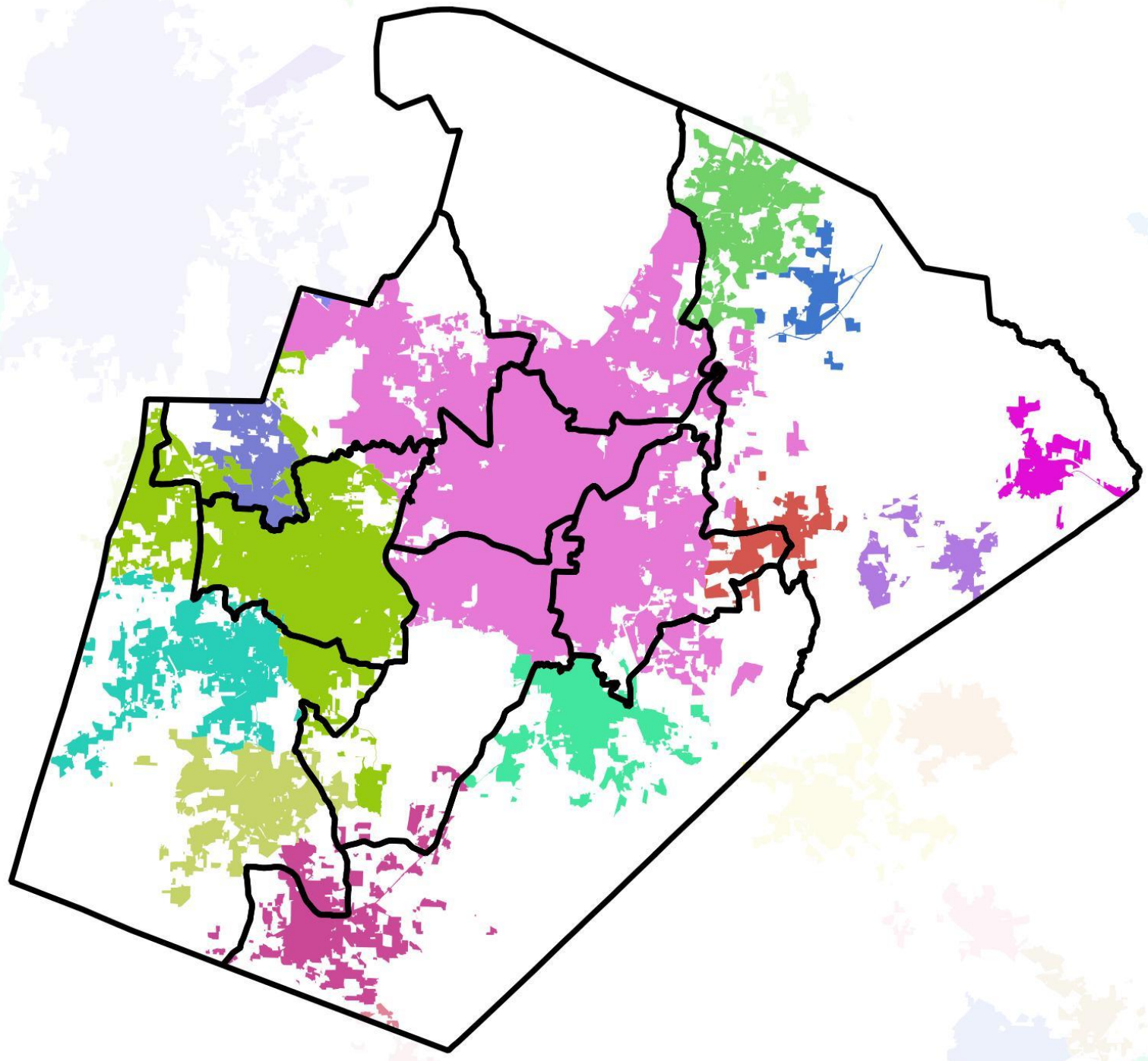


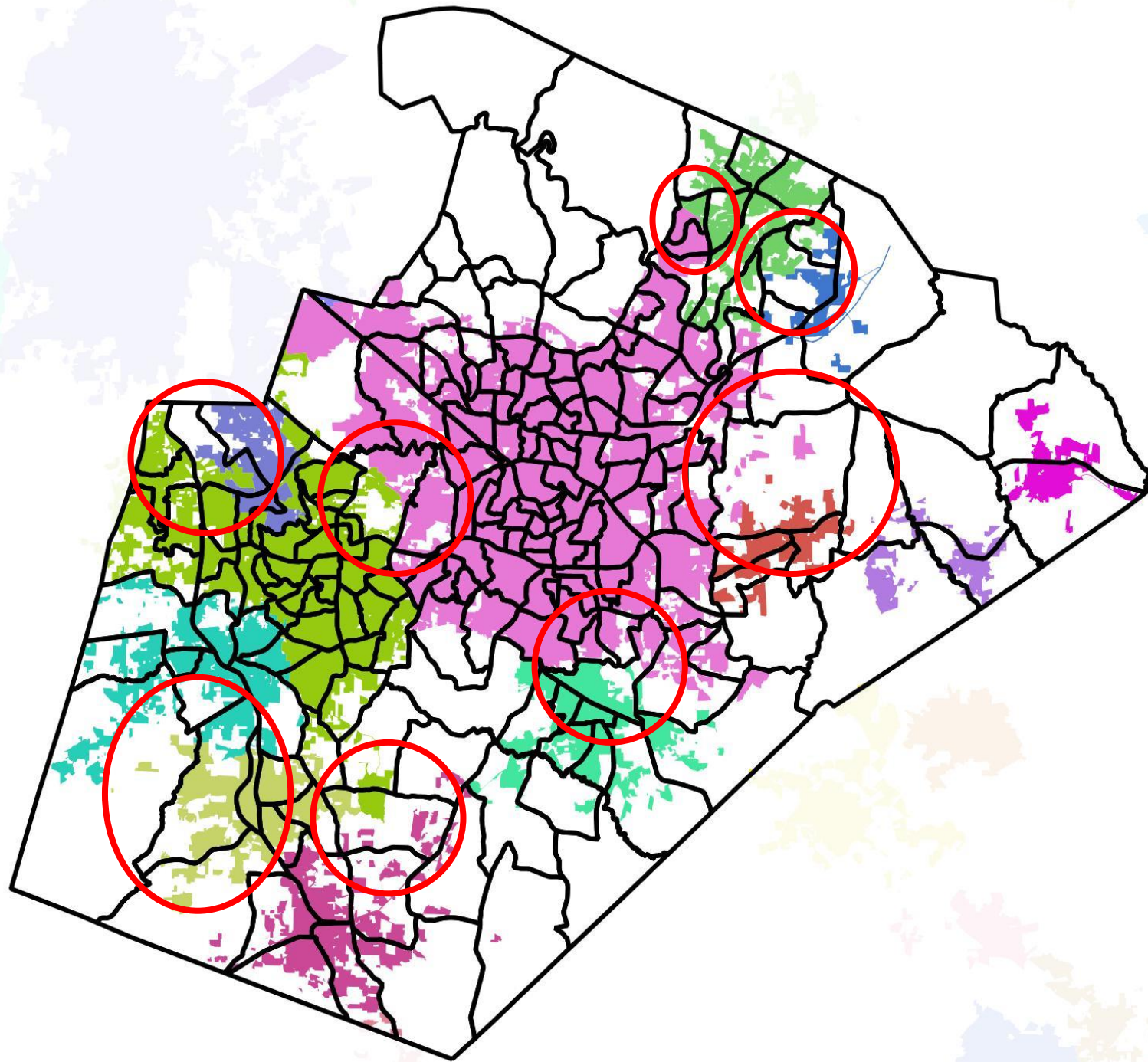


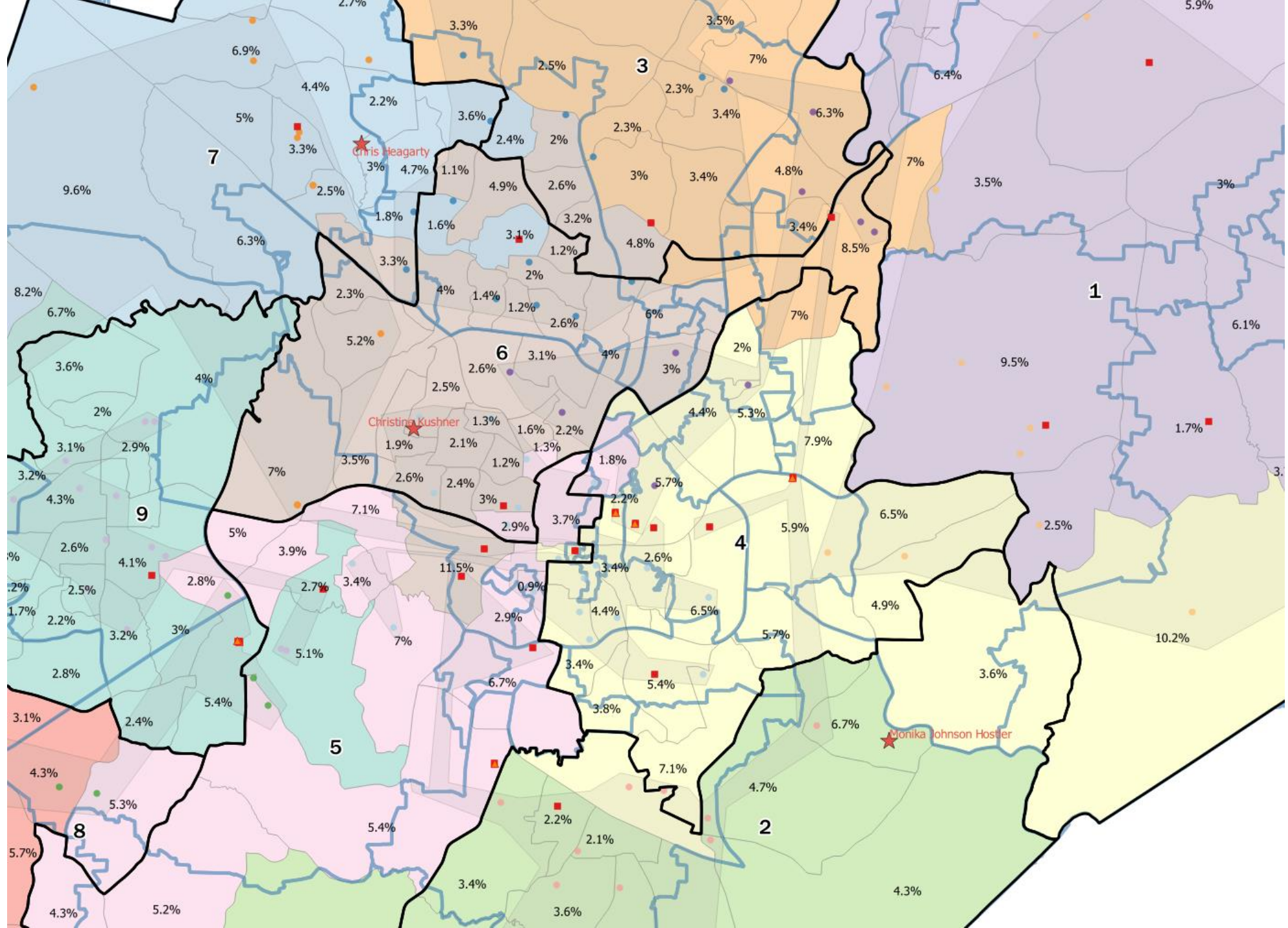


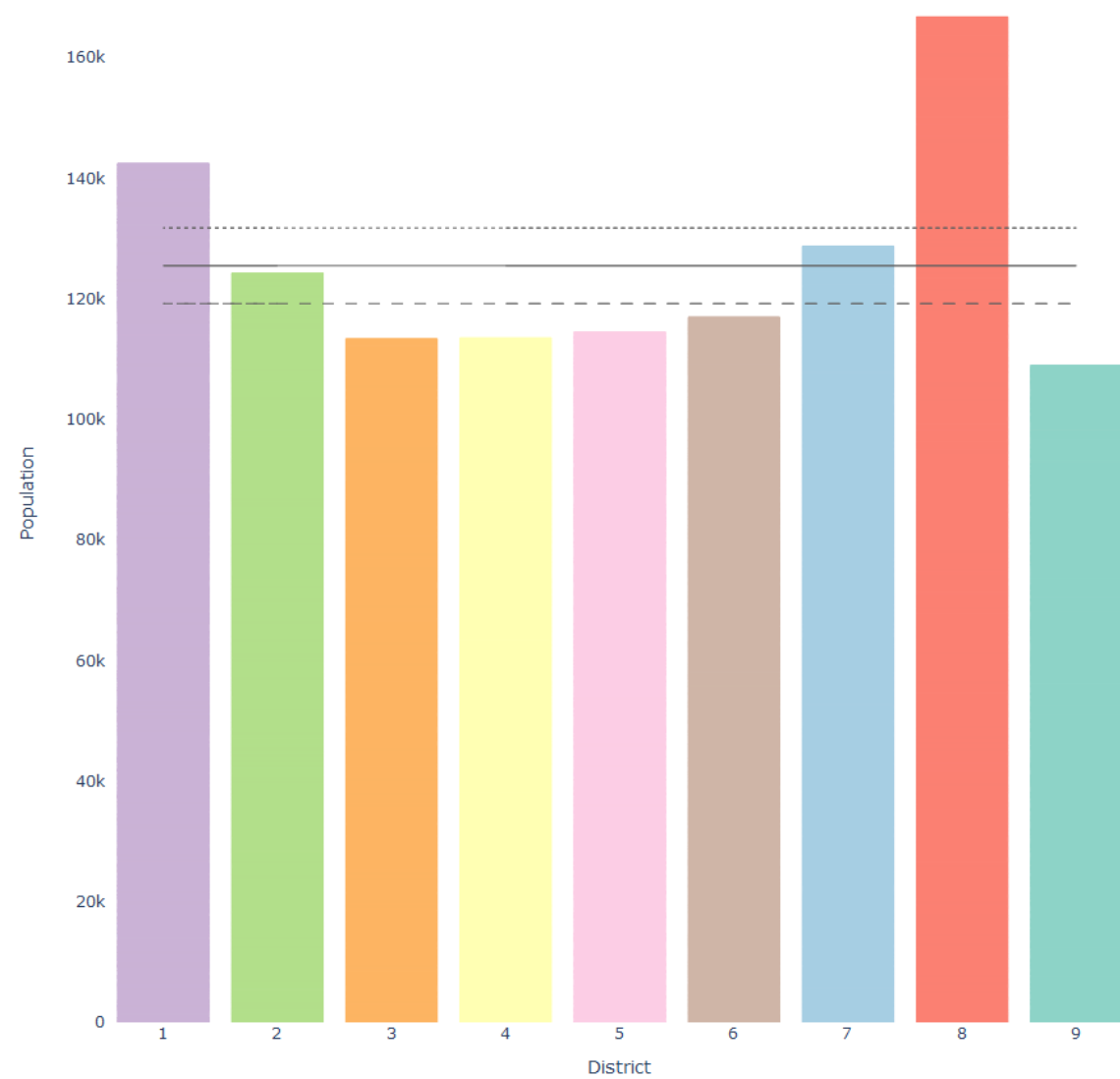
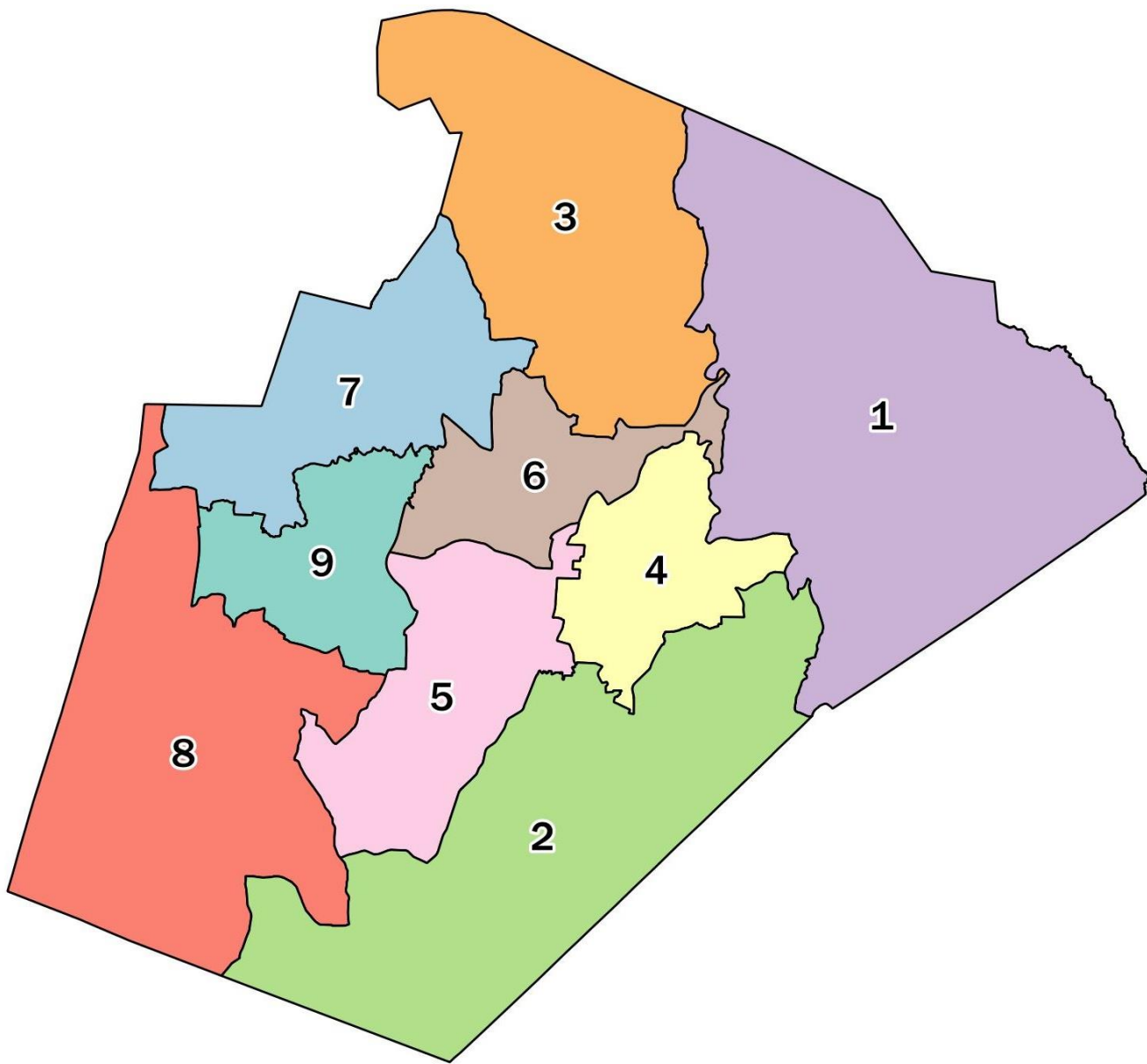


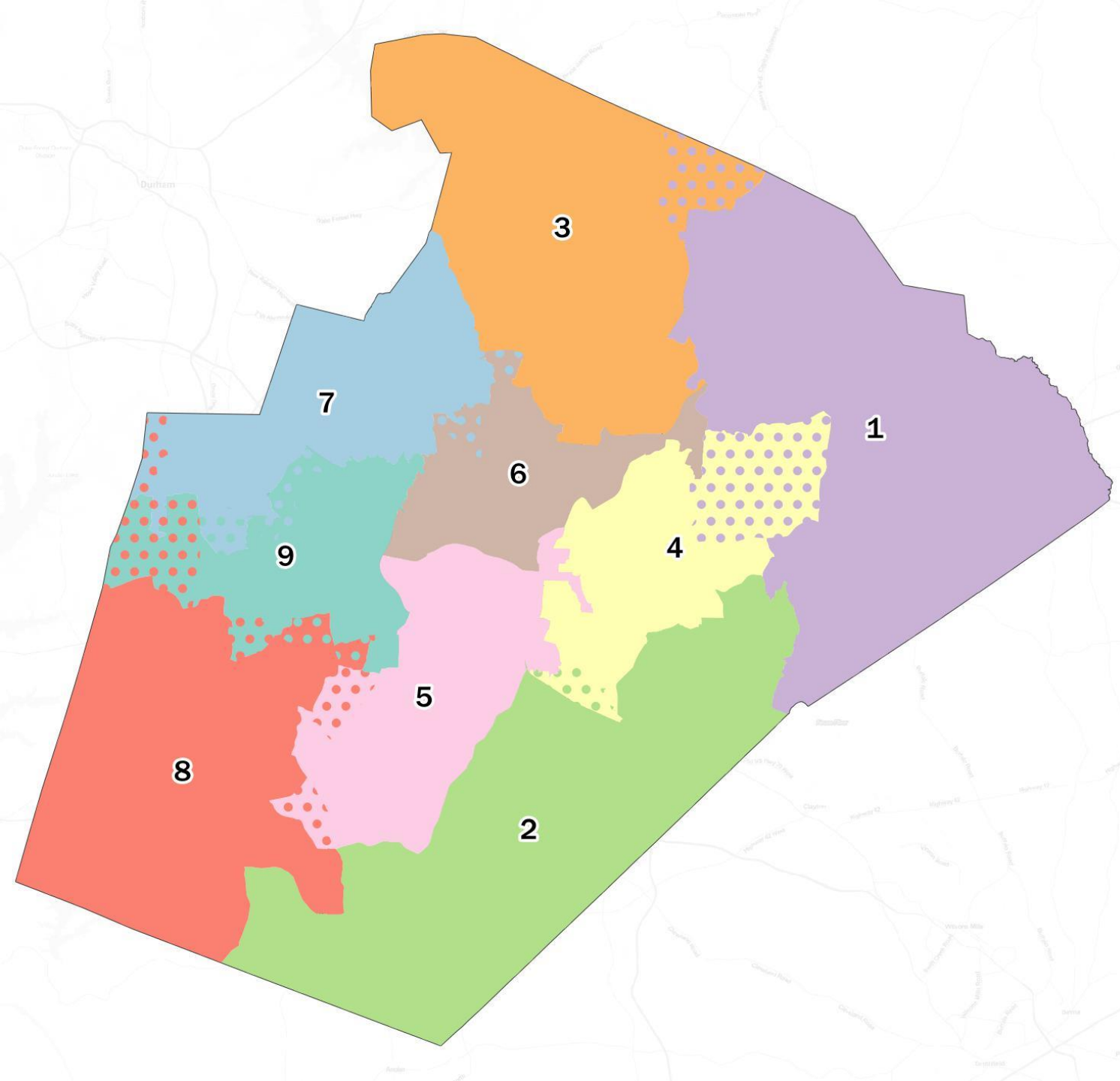










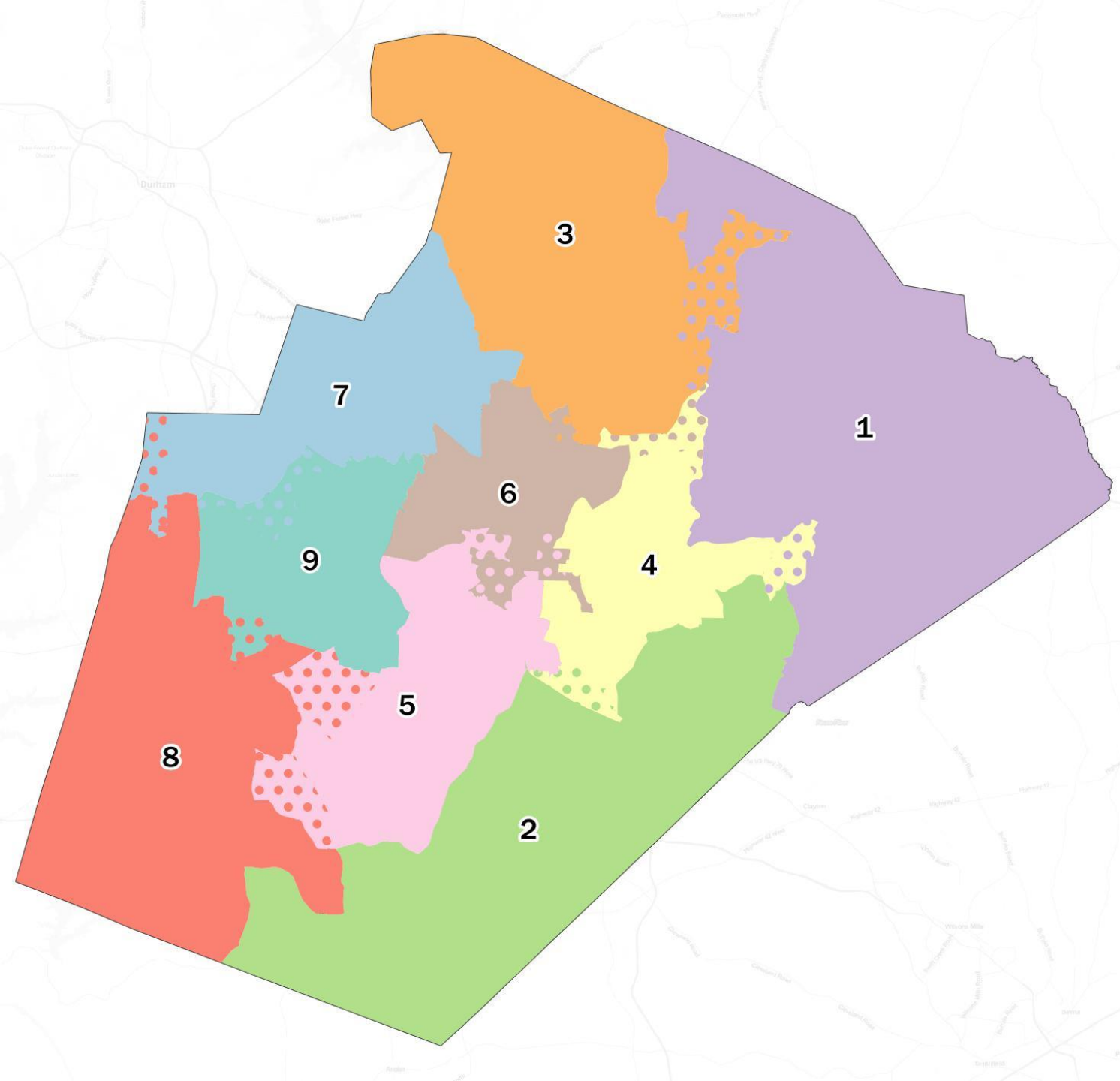


Option A Changes

- Solid background colors represent the proposed district
- Dots represent the existing district
- If no dots are visible, no changes are proposed

Description of Changes in Option A

- ▶ Reduces D1's surplus of high schools
- ▶ D1 has just two area superintendents (instead of 3)
- ▶ Very little change to D2 (just resolving precinct split)
- ▶ D7 has only two area superintendents (though one has changed)
- ▶ D3, D7, and D9 increase their number of high schools (improving balance)
- ▶ The Knightdale municipality is more wholly in D4, not bisected as before
- ▶ Does divide Town of Wake Forest
- ▶ Does not address D5's surplus of area superintendent presence
- ▶ D5 continues to have more high schools than most districts

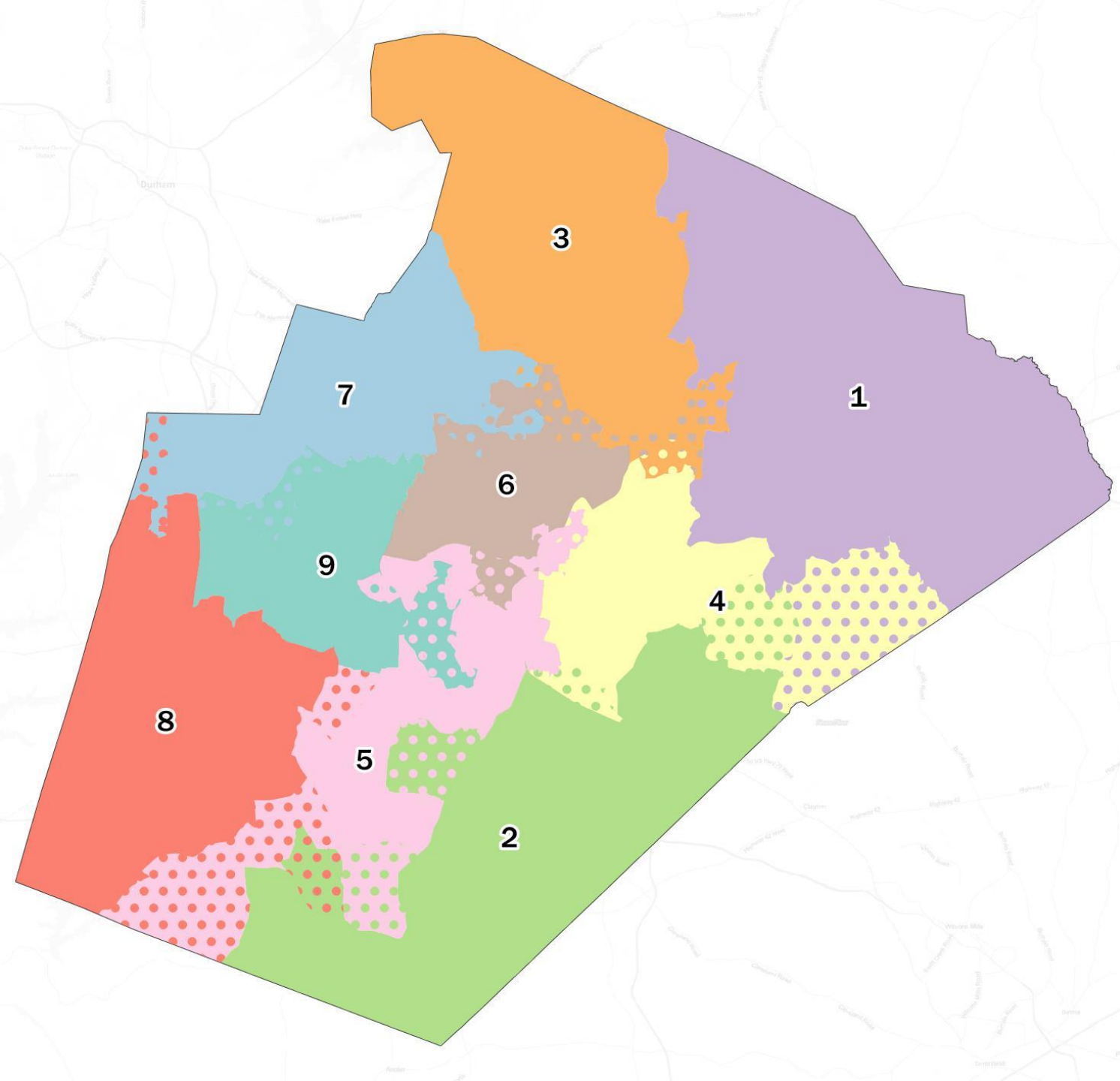


Option B Changes

- Solid background colors represent the proposed district
- Dots represent the existing district
- If no dots are visible, no changes are proposed

Description of Changes in Option B

- ▶ Rolesville High attendance area in 3 districts (had been 4)
- ▶ D6 gets some of D5's surplus of high schools
- ▶ D3 gets two high schools from D1 surplus
- ▶ Minimal changes to D2 AND D7 (just resolving precinct splits)
- ▶ D5 has one fewer area superintendent
- ▶ Puts almost all of Green Hope High attendance area into D9 (greatly reduces amount of division)
- ▶ D8 no longer has attendance areas of Athens Drive High and Middle Creek High (they go into D5)
- ▶ Other improvements to high school balance (see table)
- ▶ Enloe High attendance area now in D6 (had been just in D4 & D5)
- ▶ Does divide the Heritage High attendance area (had been all in D1)
- ▶ D7 remains with just two high schools



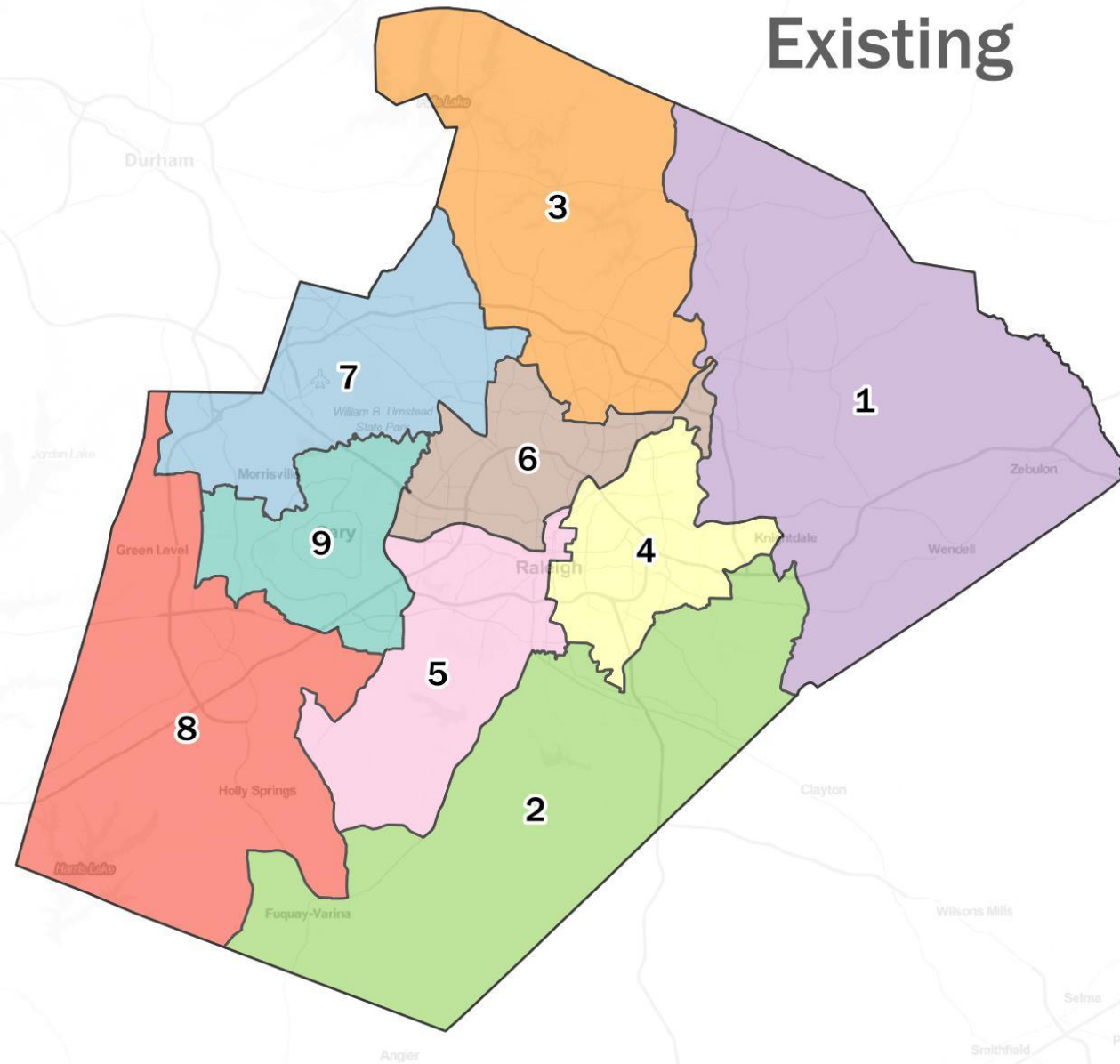
Option C Changes

- Solid background colors represent the proposed district
- Dots represent the existing district
- If no dots are visible, no changes are proposed

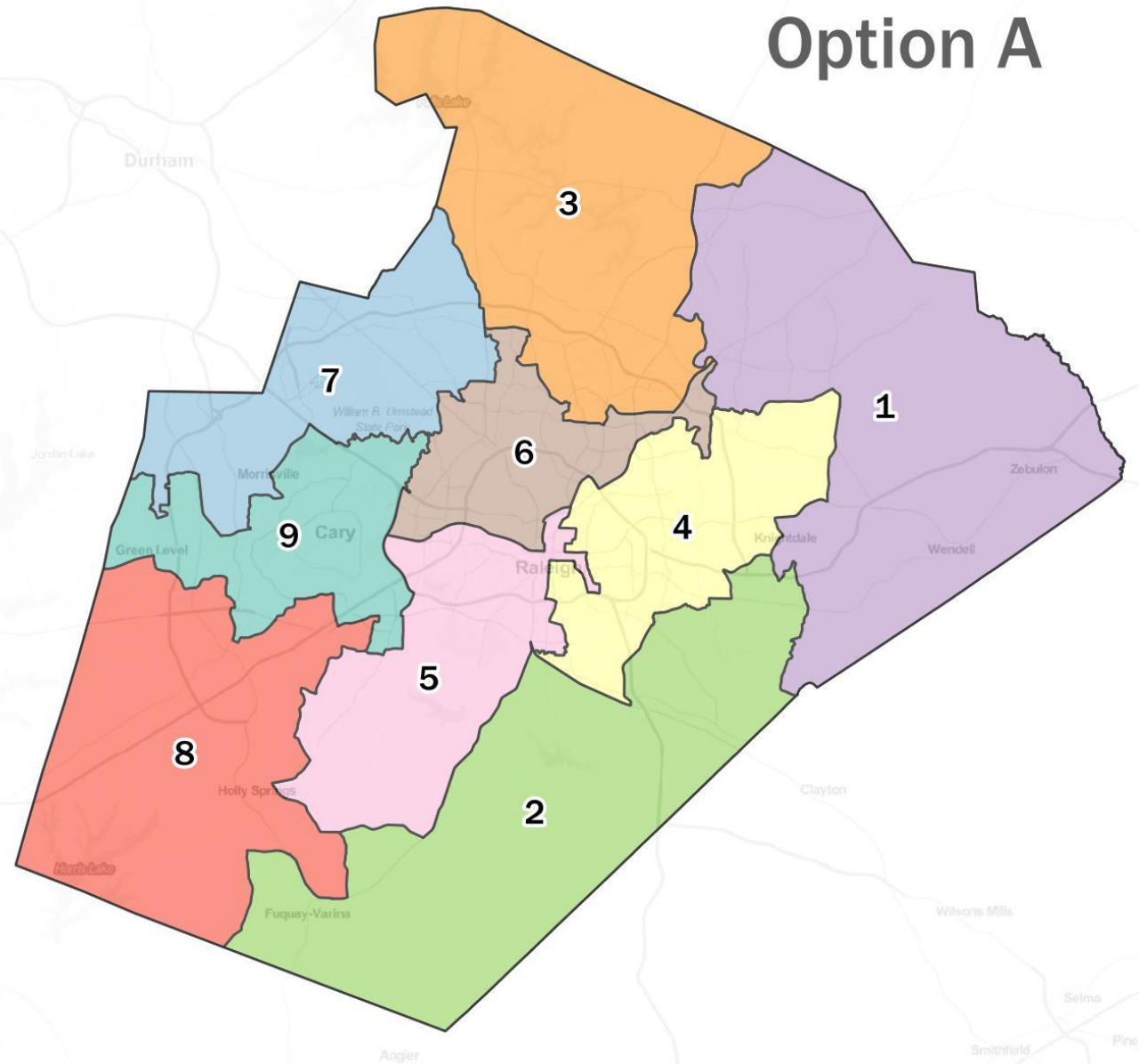
Description of Changes in Option C

- ▶ Only two area superintendents in D1 (had been three)
- ▶ Rolesville High attendance area in three districts (down from four)
- ▶ Knightdale High attendance area in just two districts (vs. three now)
- ▶ Splits Wake Forest (municipality) less than Options A and B
- ▶ D2 no longer has tiny piece of Knightdale
- ▶ D5 goes from six area superintendents to four
- ▶ D9 gets one fewer area superintendent
- ▶ D8 no longer has fragment of Fuquay-Varina
- ▶ Middle Creek High and Fuquay-Varina High assignment areas each span one fewer district
- ▶ Other improvements to high school balance (see table)
- ▶ Does divide Wendell between D1 and D4
- ▶ D3, D5, and D6 get small pieces of additional attendance areas

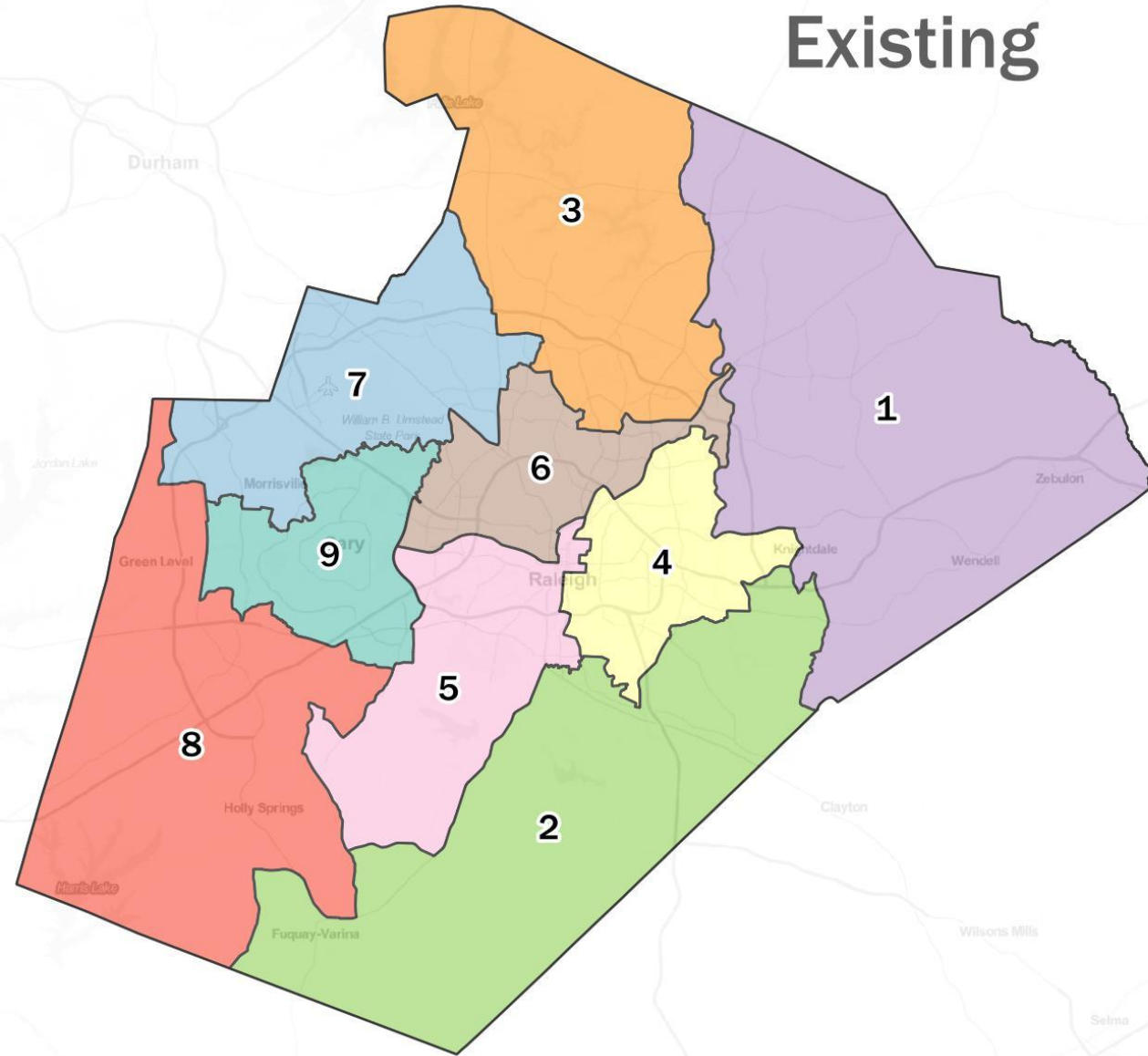
Existing



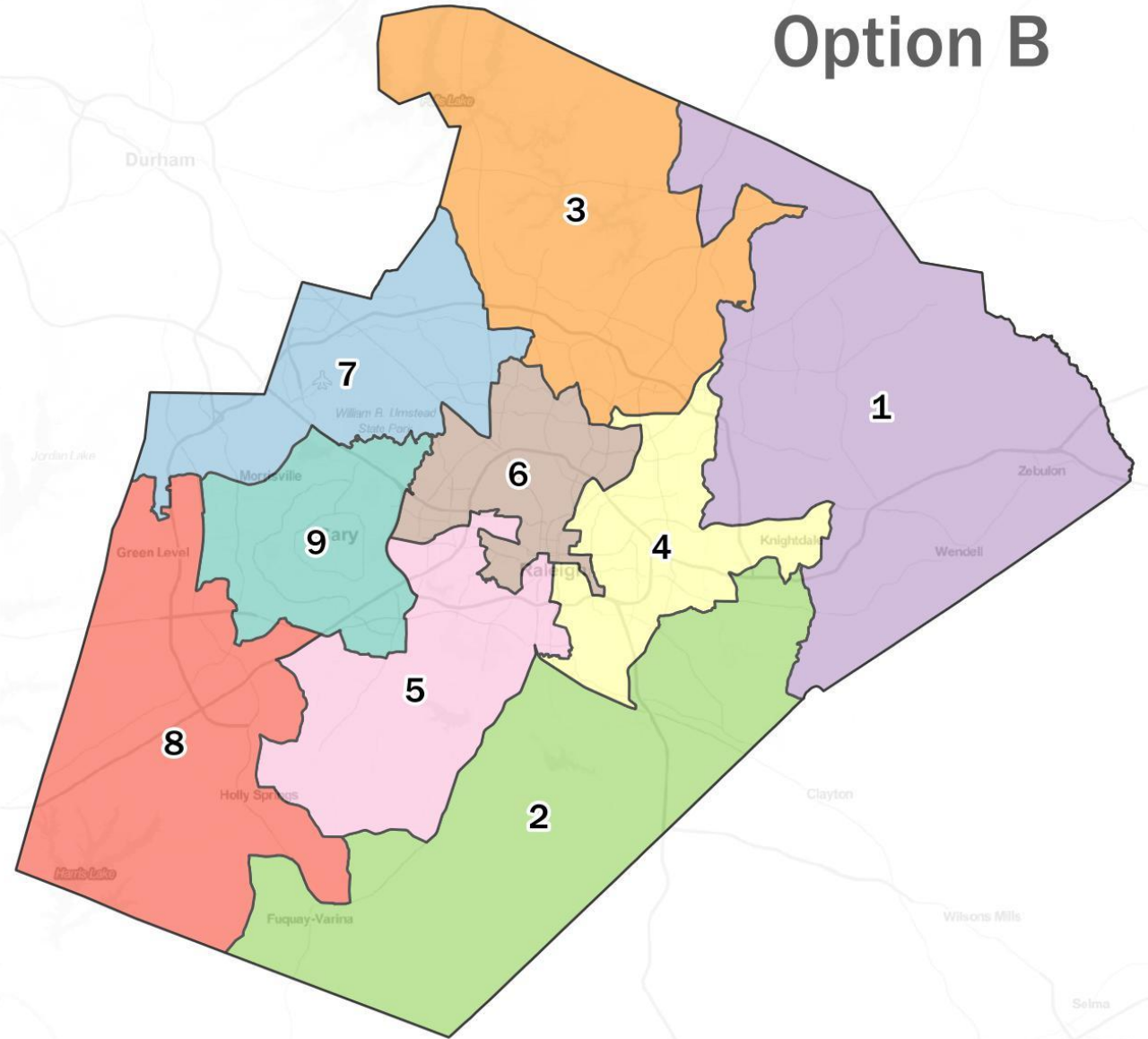
Option A



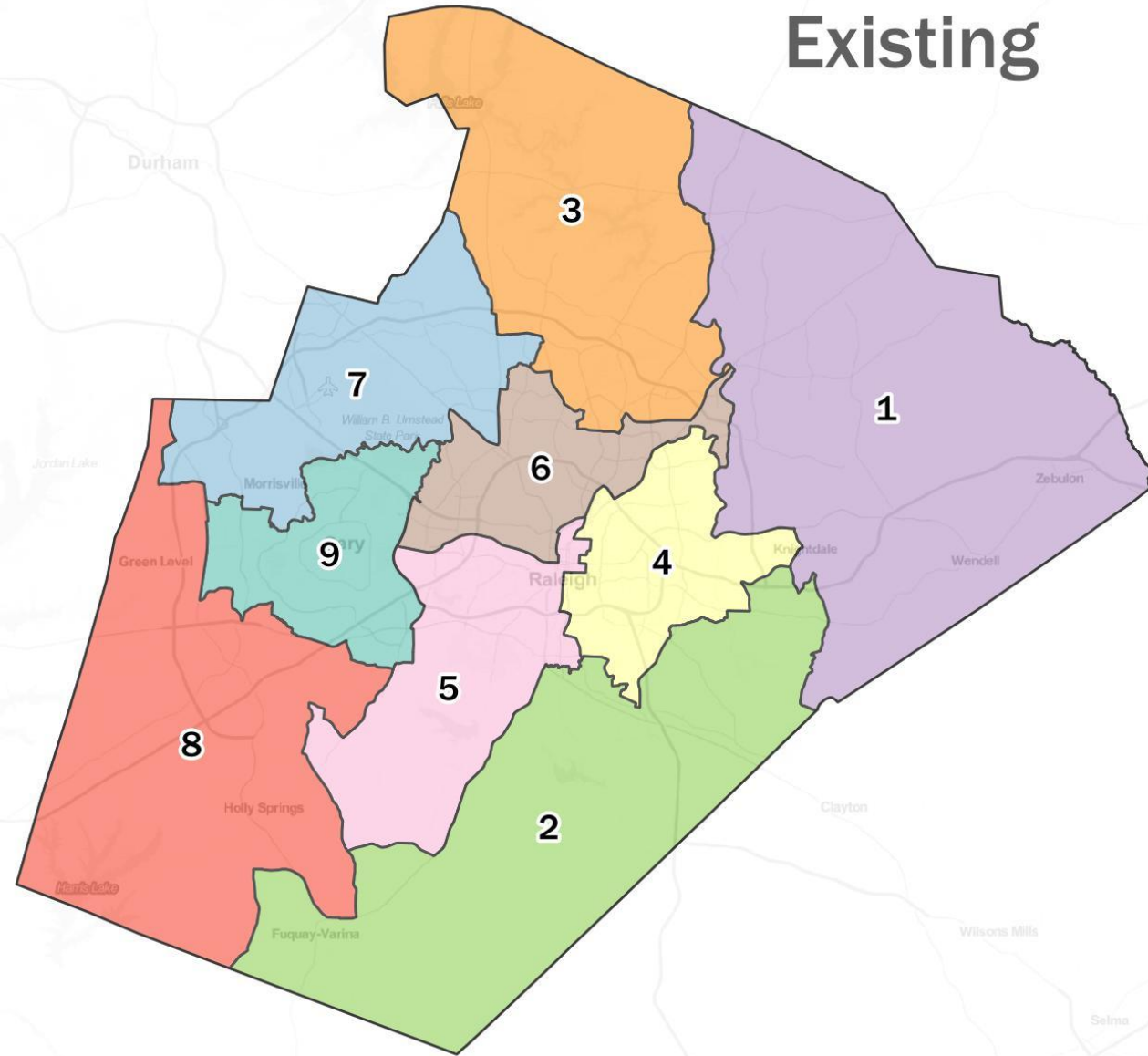
Existing



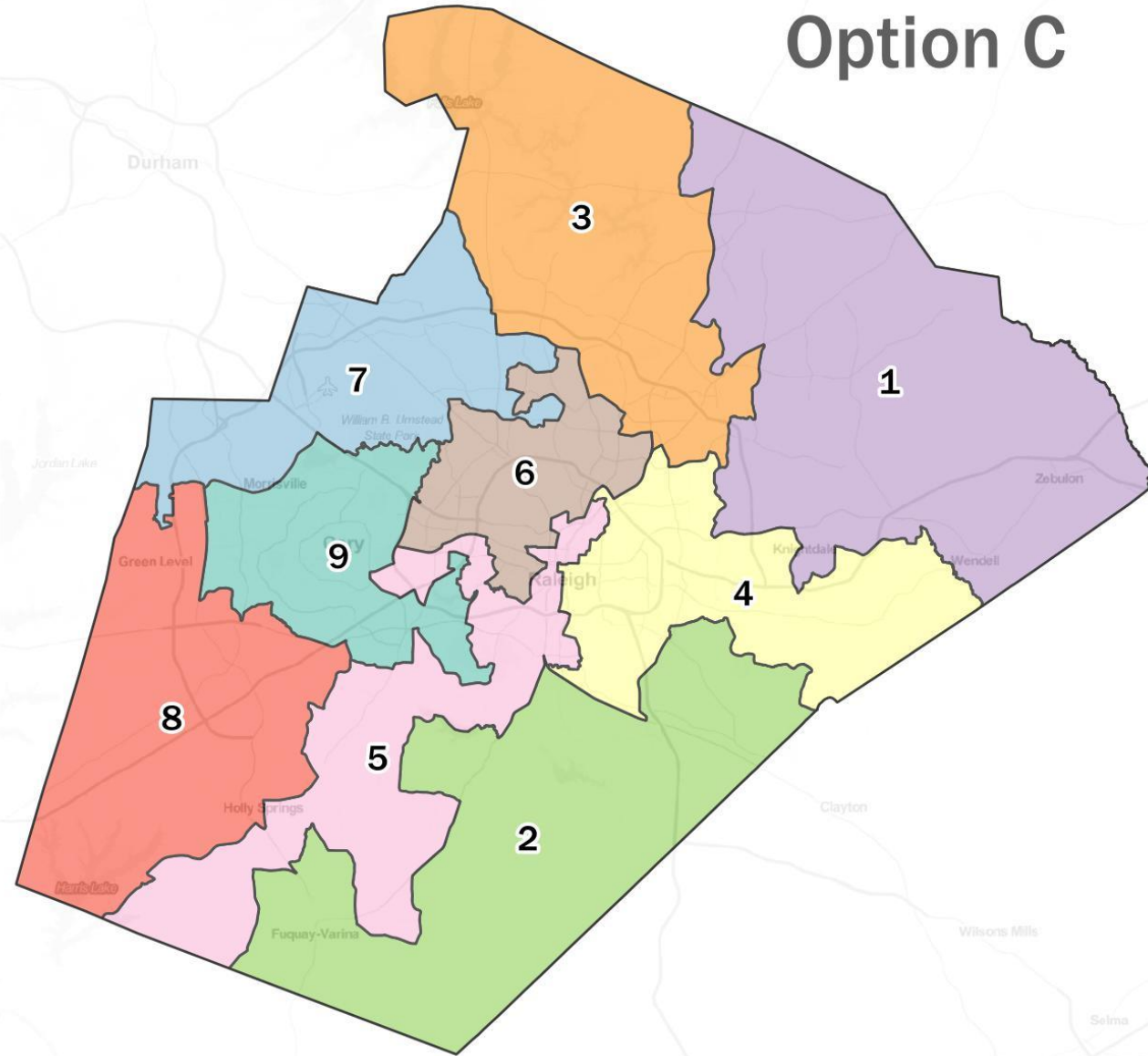
Option B



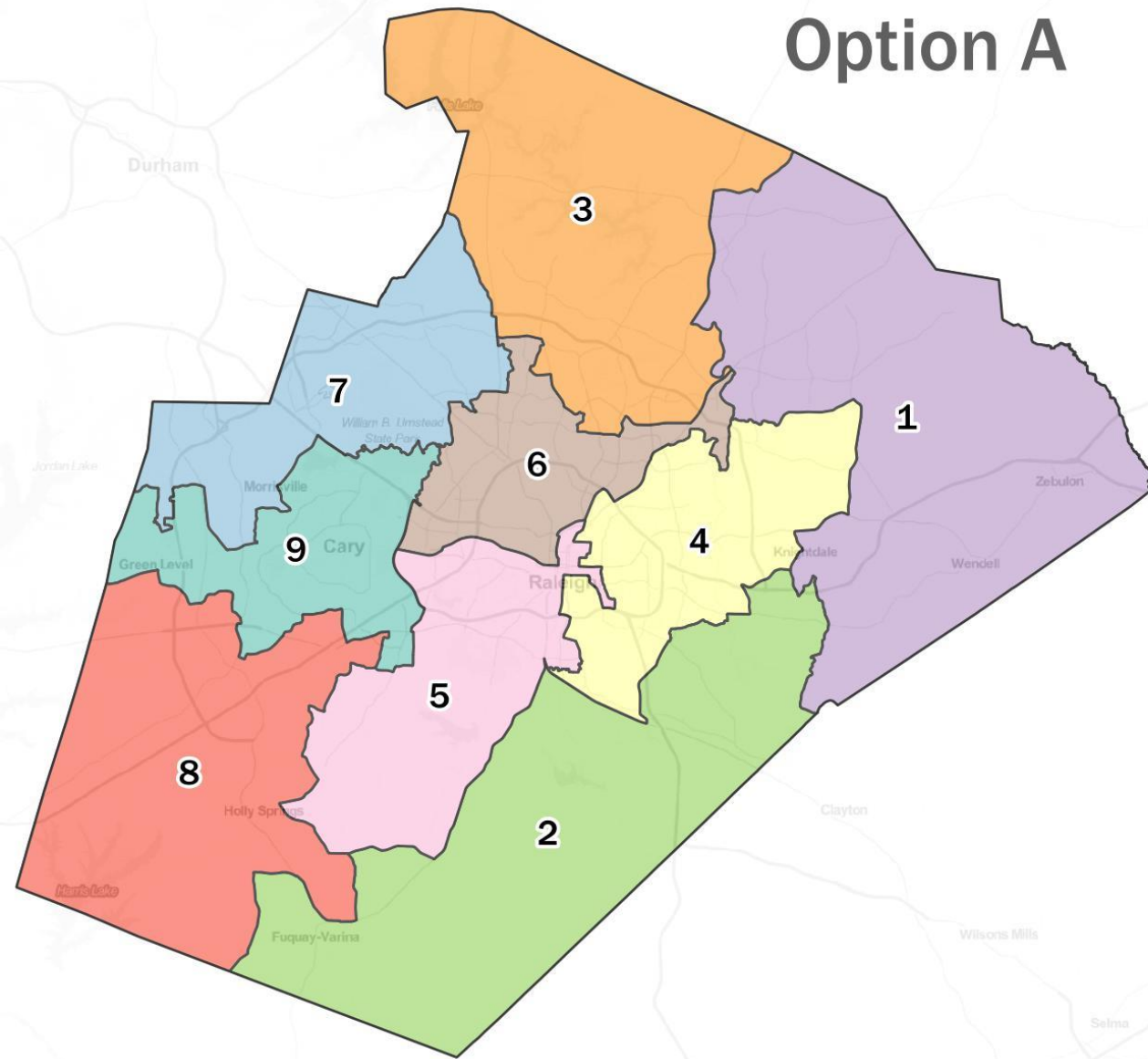
Existing



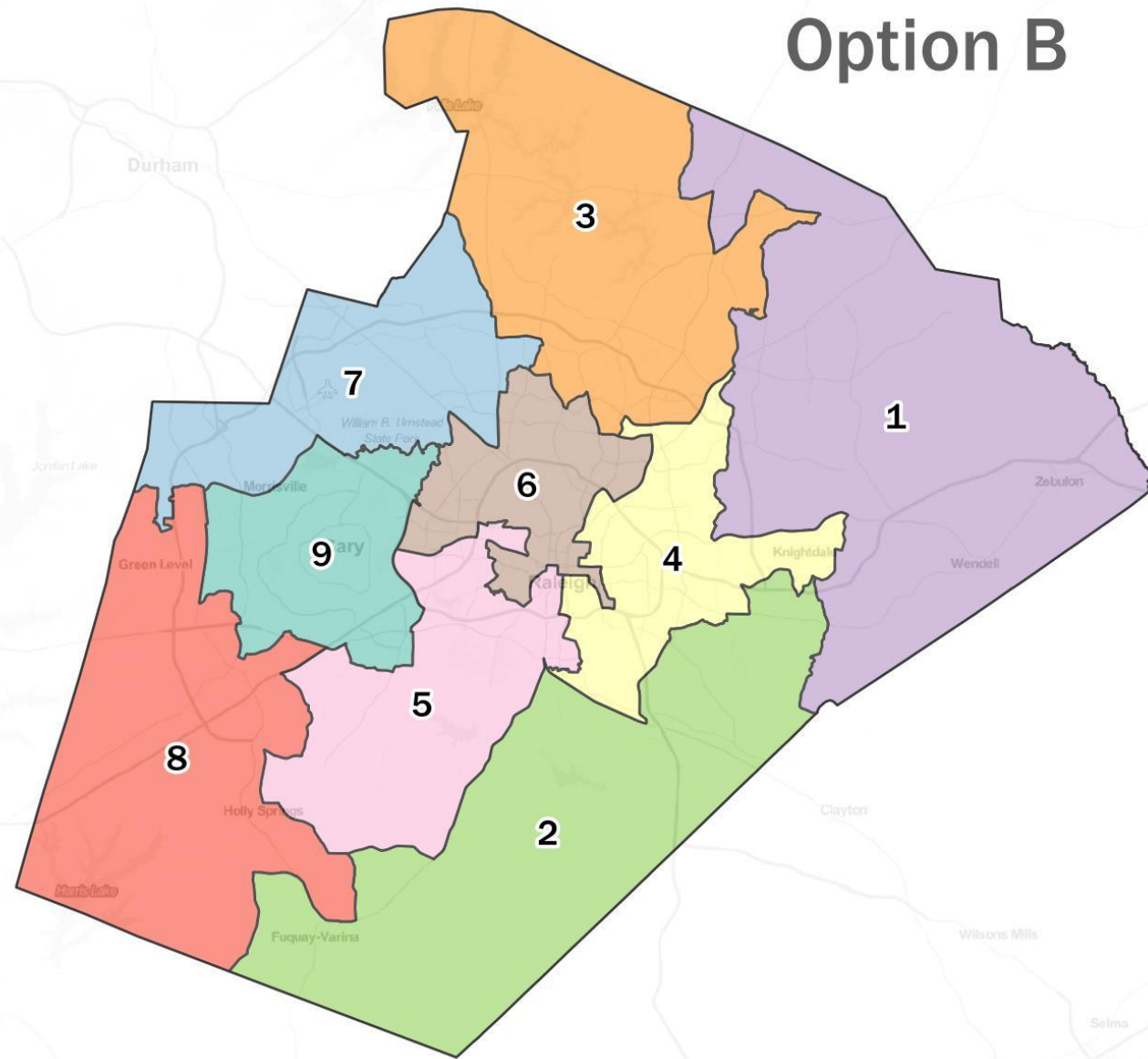
Option C



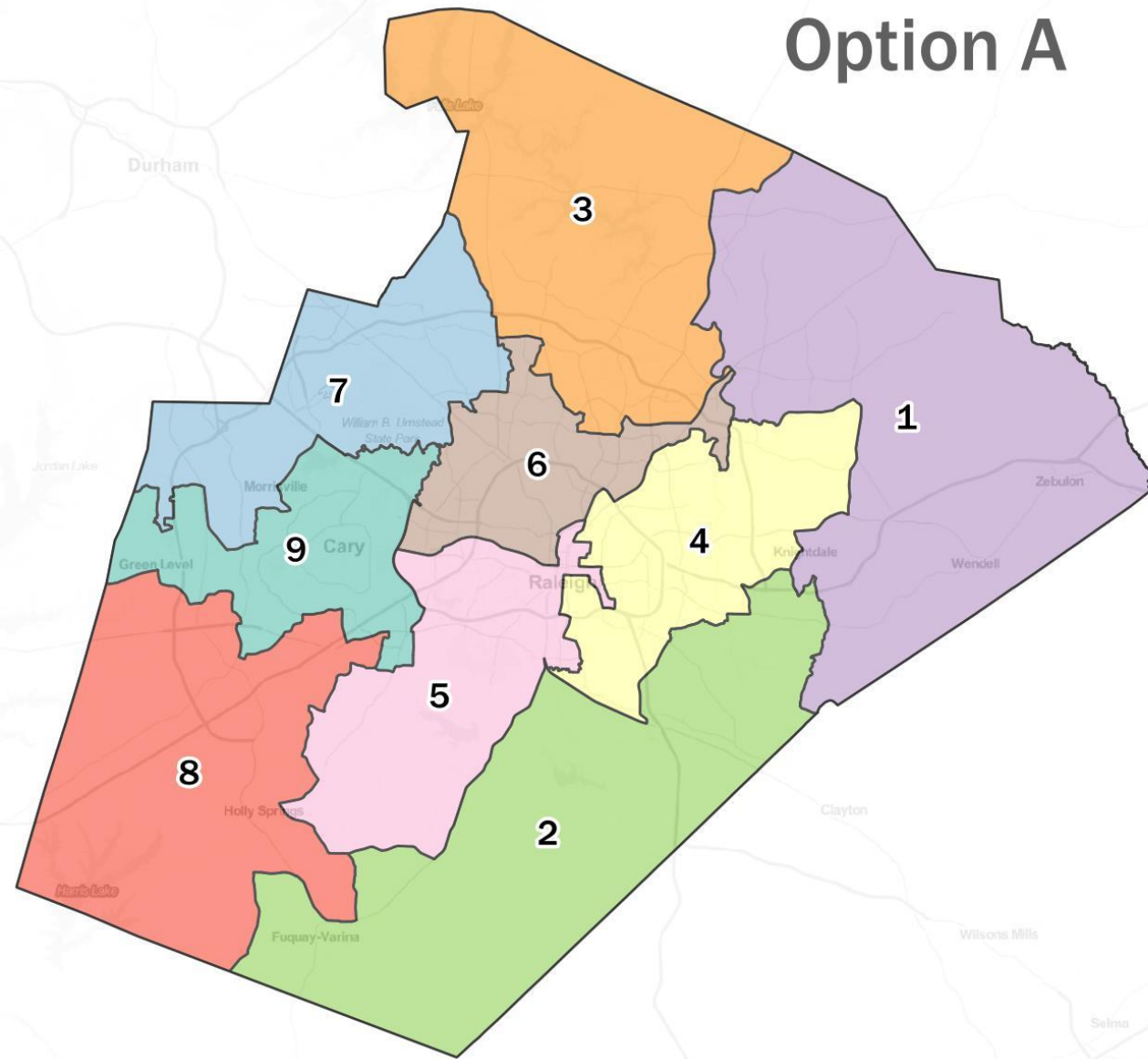
Option A



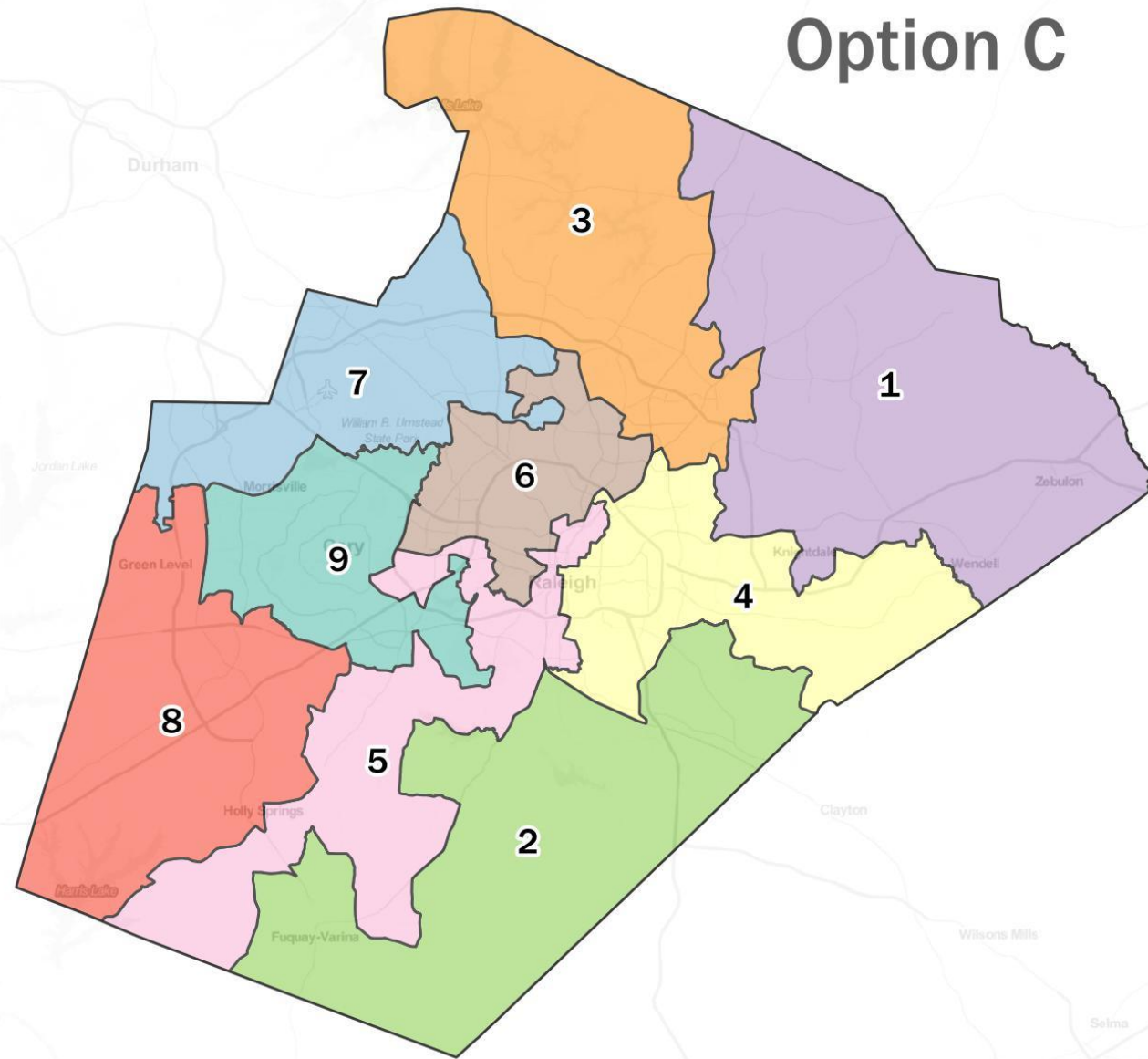
Option B



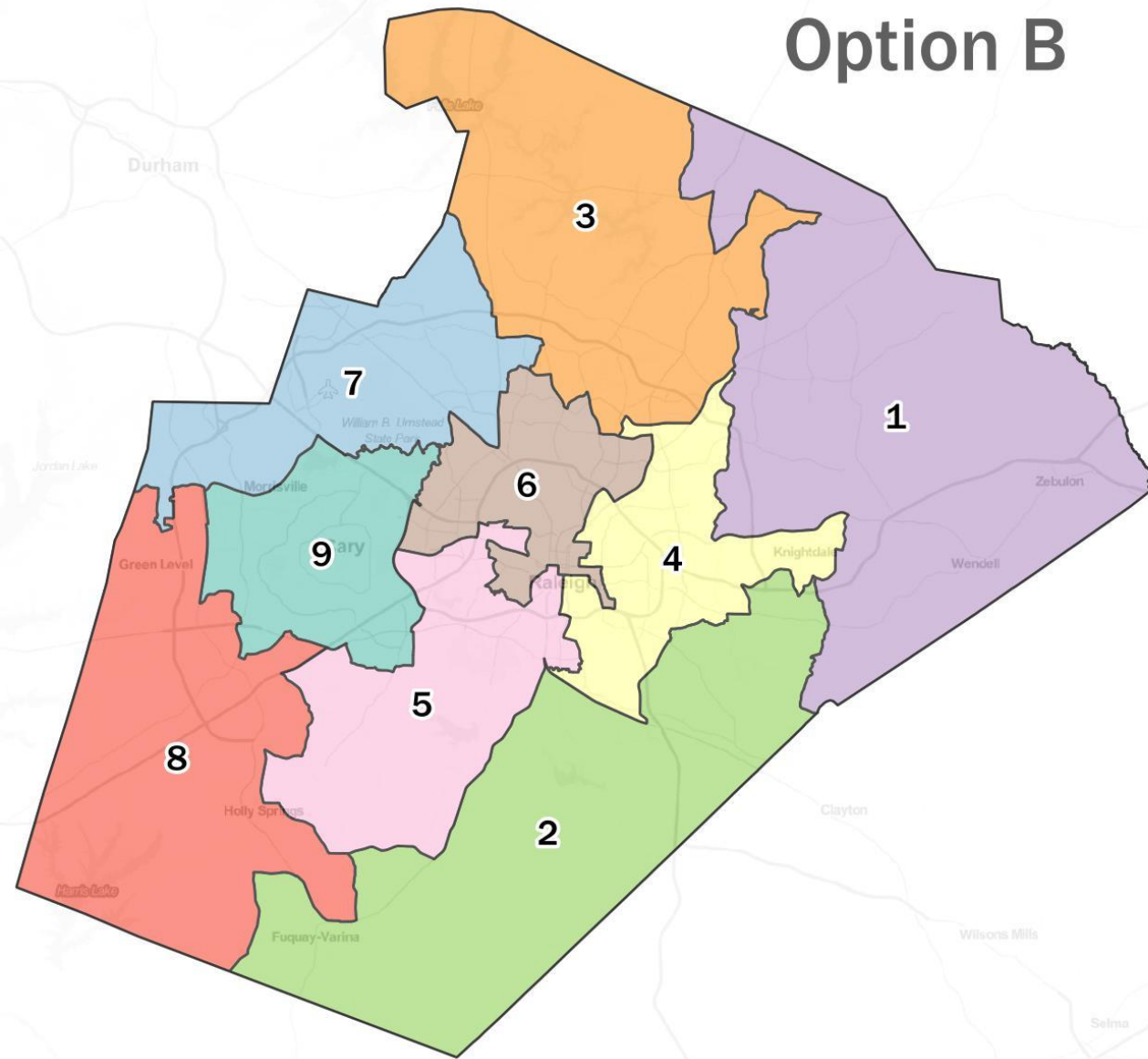
Option A



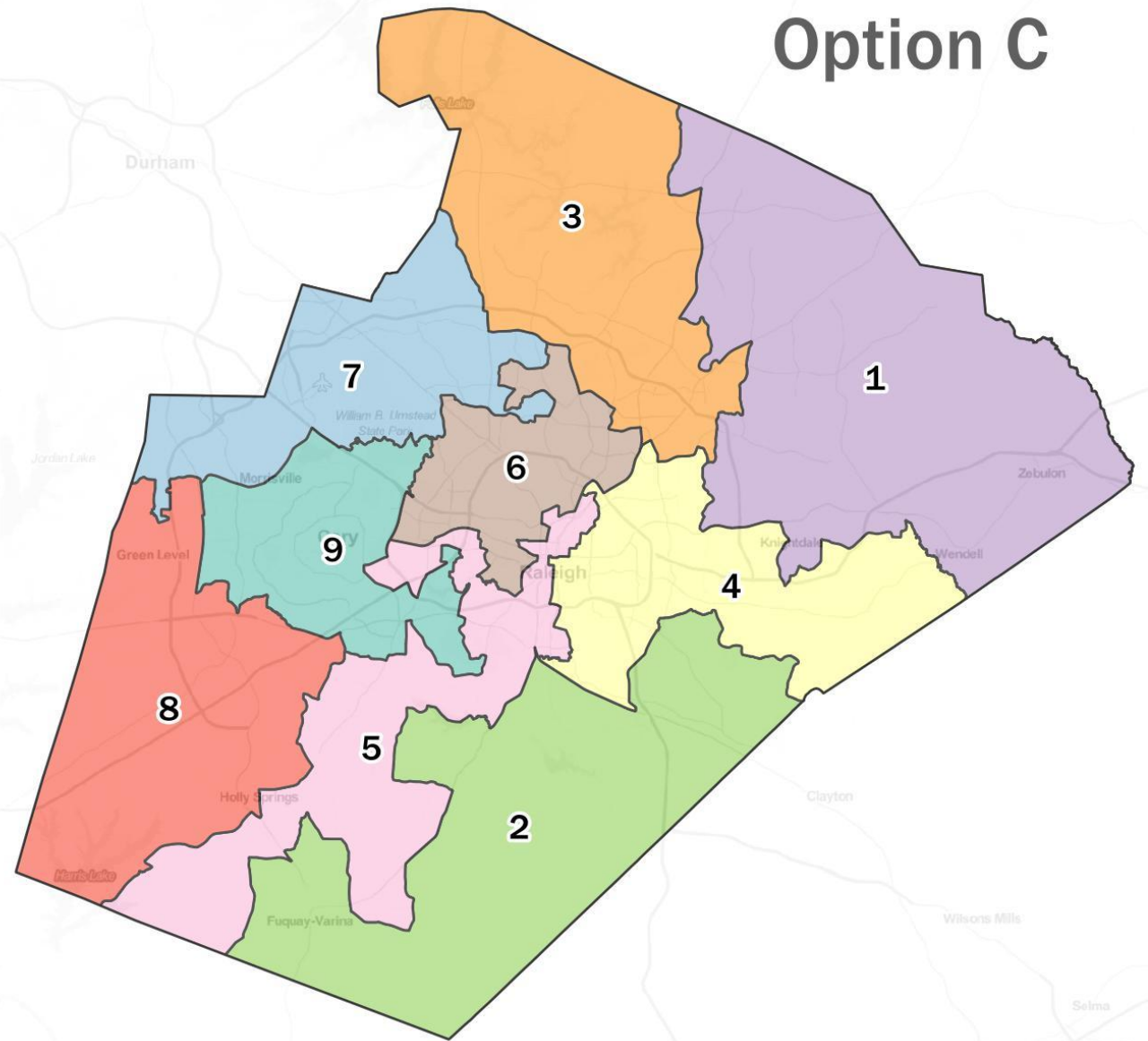
Option C



Option B



Option C



High Schools* by District

Plan	District 1	District 2	District 3	District 4	District 5	District 6	District 7	District 8	District 9	Standard Deviation
Existing	6	3	2	6	7	3	2	5	4	1.75
Option A	3	3	4	7	7	3	3	3	5	1.62
Option B	4	3	4	7	4	5	2	4	5	1.31
Option C	5	4	4	7	4	3	3	3	5	1.23

*Note that these numbers include academies and virtual/alternative programs. For example, District 4 contains SCORE Academy River Oaks, Longview School, and Mary E. Phillips High School—in all of the plans.

Area Superintendents by District

Plan	District 1	District 2	District 3	District 4	District 5	District 6	District 7	District 8	District 9	Average	Standard Deviation
Existing	3	2	2	4	6	5	2	2	2	3.11	1.45
Option A	2	2	2	4	6	5	2	2	2	3.00	1.49
Option B	2	2	2	4	5	5	2	3	3	3.11	1.20
Option C	2	2	3	5	4	4	2	3	3	3.11	0.99

Population Summary Report

District No.	TOTAL Population	Target Population	Target Deviation	Target Deviation (%)	Total (%)	Non-Hispanic Asian (%)	Non-Hispanic black (%)	Hispanic (%)	Non-Hispanic white (%)	Non-Hispanic some other race (%)	Non-Hispanic two or more minority race (%)
D1	142,445	125,490	16,955	13.51	12.61%	3.50%	24.14%	12.86%	56.28%	1.12%	0.87%
D2	124,239	125,490	-1,251	-1.00	11.00%	2.34%	23.18%	14.28%	56.97%	1.02%	0.73%
D3	113,388	125,490	-12,102	-9.64	10.04%	5.36%	18.52%	9.44%	63.78%	1.13%	0.73%
D4	113,533	125,490	-11,957	-9.53	10.05%	3.88%	46.95%	20.31%	26.16%	0.87%	1.04%
D5	114,489	125,490	-11,001	-8.77	10.14%	8.29%	16.67%	11.39%	60.50%	1.34%	0.65%
D6	116,905	125,490	-8,585	-6.84	10.35%	4.10%	15.50%	11.21%	66.70%	1.01%	0.59%
D7	128,682	125,490	3,192	2.54	11.39%	21.36%	13.50%	7.01%	55.34%	1.15%	0.69%
D8	166,760	125,490	41,270	32.89	14.77%	18.34%	8.23%	7.38%	63.11%	1.33%	0.55%
D9	108,969	125,490	-16,521	-13.17	9.65%	15.65%	8.59%	10.05%	62.74%	1.37%	0.63%

TOTAL Population:	1,129,410
Mean Target Population:	125,490
Mean Deviation:	13,648
Mean Percent Deviation:	10.88
Largest Positive Deviation:	41,270
Largest Negative Deviation:	-16,521
Overall Range in Deviation:	57,791
Overall Range in Deviation Percentage:	46.05

Existing Districts

Population Summary Report

District No.	TOTAL Population	Target Population	Target Deviation	Target Deviation (%)	Total (%)	Non-Hispanic Asian (%)	Non-Hispanic black (%)	Hispanic (%)	Non-Hispanic white (%)	Non-Hispanic some other race (%)	Non-Hispanic two or more minority race (%)
D1	119,306	125,490	-6,184	-4.93	10.56%	3.45%	24.07%	12.79%	56.46%	1.14%	0.84%
D2	120,323	125,490	-5,167	-4.12	10.65%	2.34%	22.74%	14.02%	57.69%	1.03%	0.71%
D3	124,650	125,490	-840	-0.67	11.04%	5.22%	17.88%	9.26%	64.77%	1.11%	0.73%
D4	127,741	125,490	2,251	1.79	11.31%	3.84%	45.50%	20.36%	27.46%	0.90%	1.06%
D5	127,055	125,490	1,565	1.25	11.25%	8.08%	16.23%	10.78%	61.80%	1.34%	0.63%
D6	127,925	125,490	2,435	1.94	11.33%	4.10%	15.29%	10.91%	67.23%	1.00%	0.57%
D7	131,024	125,490	5,534	4.41	11.60%	24.40%	13.26%	6.82%	52.66%	1.20%	0.72%
D8	121,425	125,490	-4,065	-3.24	10.75%	11.72%	8.42%	7.98%	68.78%	1.36%	0.54%
D9	129,961	125,490	4,471	3.56	11.51%	21.31%	8.40%	9.45%	58.00%	1.31%	0.62%

TOTAL Population:	1,129,410
Mean Target Population:	125,490
Mean Deviation:	3,612
Mean Percent Deviation:	2.88
Largest Positive Deviation:	5,534
Largest Negative Deviation:	-6,184
Overall Range in Deviation:	11,718
Overall Range in Deviation Percentage:	9.34

Option A

Population Summary Report

District No.	TOTAL Population	Target Population	Target Deviation	Target Deviation (%)	Total (%)	Non-Hispanic Asian (%)	Non-Hispanic black (%)	Hispanic (%)	Non-Hispanic white (%)	Non-Hispanic some other race (%)	Non-Hispanic two or more minority race (%)
D1	121,041	125,490	-4,449	-3.55	10.72%	3.30%	25.25%	13.26%	54.97%	1.08%	0.88%
D2	120,323	125,490	-5,167	-4.12	10.65%	2.34%	22.74%	14.02%	57.69%	1.03%	0.71%
D3	127,641	125,490	2,151	1.71	11.30%	5.34%	17.97%	9.25%	64.52%	1.15%	0.71%
D4	129,616	125,490	4,126	3.29	11.48%	3.98%	45.52%	20.89%	26.83%	0.90%	1.06%
D5	125,971	125,490	481	0.38	11.15%	7.87%	14.38%	10.69%	63.91%	1.41%	0.62%
D6	127,364	125,490	1,874	1.49	11.28%	4.81%	14.57%	9.50%	68.58%	1.04%	0.56%
D7	126,883	125,490	1,393	1.11	11.23%	21.75%	13.93%	7.05%	54.46%	1.12%	0.73%
D8	119,915	125,490	-5,575	-4.44	10.62%	18.18%	8.16%	8.01%	62.69%	1.32%	0.53%
D9	130,656	125,490	5,166	4.12	11.57%	18.02%	8.54%	9.43%	61.09%	1.35%	0.61%

TOTAL Population:	1,129,410
Mean Target Population:	125,490
Mean Deviation:	3,376
Mean Percent Deviation:	2.69
Largest Positive Deviation:	5,166
Largest Negative Deviation:	-5,575
Overall Range in Deviation:	10,741
Overall Range in Deviation Percentage:	8.56

Option B

Population Summary Report

District No.	TOTAL Population	Target Population	Target Deviation	Target Deviation (%)	Total (%)	Non-Hispanic Asian (%)	Non-Hispanic black (%)	Hispanic (%)	Non-Hispanic white (%)	Non-Hispanic some other race (%)	Non-Hispanic two or more minority race (%)
D1	119,276	125,490	-6,214	-4.95	10.56%	3.54%	22.64%	12.41%	58.16%	1.14%	0.87%
D2	119,532	125,490	-5,958	-4.75	10.58%	2.44%	22.29%	13.49%	58.56%	1.05%	0.71%
D3	124,284	125,490	-1,206	-0.96	11.00%	5.82%	21.72%	12.14%	57.43%	1.11%	0.78%
D4	126,434	125,490	944	0.75	11.19%	3.14%	45.75%	19.47%	28.89%	0.87%	1.02%
D5	127,439	125,490	1,949	1.55	11.28%	6.96%	14.74%	11.09%	64.00%	1.37%	0.64%
D6	129,539	125,490	4,049	3.23	11.47%	4.95%	14.38%	10.26%	67.88%	1.03%	0.55%
D7	131,684	125,490	6,194	4.94	11.66%	21.06%	14.03%	6.95%	55.11%	1.14%	0.73%
D8	120,630	125,490	-4,860	-3.87	10.68%	18.94%	7.37%	7.38%	63.39%	1.35%	0.55%
D9	130,592	125,490	5,102	4.07	11.56%	18.05%	9.11%	9.29%	60.65%	1.34%	0.60%

TOTAL Population: 1,129,410

Mean Target Population: 125,490

Mean Deviation: 4,053

Mean Percent Deviation: 3.23

Largest Positive Deviation: 6,194

Largest Negative Deviation: -6,214

Overall Range in Deviation: 12,408

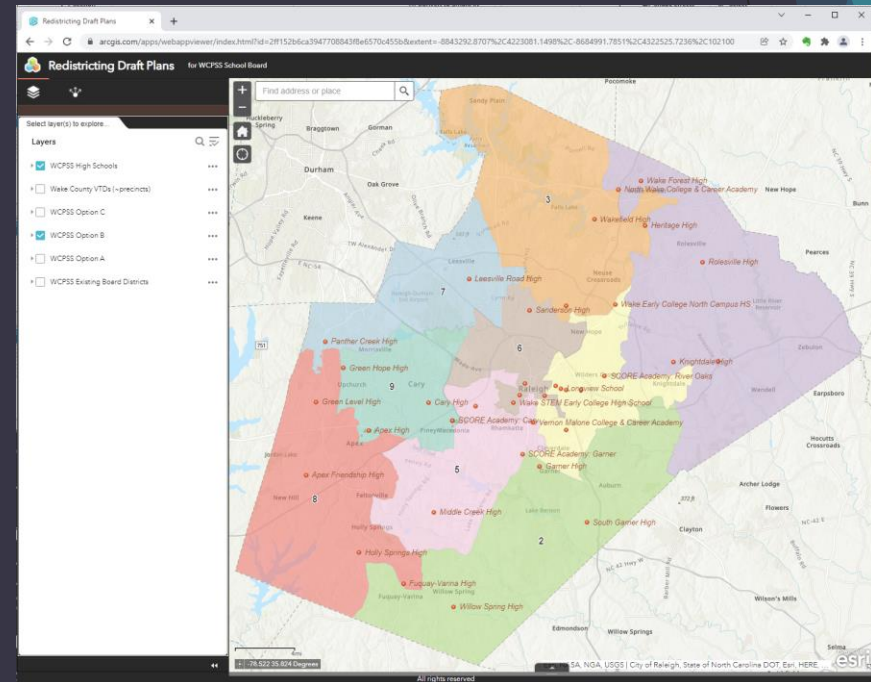
Overall Range in Deviation Percentage: 9.89

Option C

Interactive online map of the plans
can be viewed at:
<https://arcg.is/1PX0yr0>

The web-based map allows you to:

- Zoom fully in and out
- Pan around the map while zoomed in
- Search for a specific address or landmark
- Turn layers on and off to compare plans
- See locations of high schools



Timeline — Bookends

- ▶ September 21, 2021 meeting: introductory discussion
- ▶ December 7, 2021: selection of guidelines
- ▶ Candidate filing timing currently uncertain (as of “press time”)
 - ▶ March 24–April 1? July 1–July 15?
- ▶ Boards of Elections need time to process before deadline
- ▶ Plan should ideally be adopted weeks in advance of filing

Timeline — Remaining Steps

- ▶ Points to put on a road map for the rest of the process:
 - ▶ Additional discussion if needed at a subsequent work session (identify preferred plan?)
 - ▶ Public hearing (perhaps at a March meeting?)
 - ▶ Adoption following public hearing
 - ▶ Could be immediately following or at a subsequent meeting



Questions, Discussion, Consensus?