



# LEESVILLE ROAD HIGH SCHOOL

**Rising 9th Grade  
Information**



# NAVIGATING 9TH GRADE...

# Block Scheduling

- LRHS is on a block schedule, which means students take 4 classes first semester and then 4 new classes second semester. Classes are approximately 85 minutes in length. Students receive one full credit for a class in a semester.
- Students register for 8 main classes as they are choosing classes for the entire school year.
- Rising 9<sup>th</sup> grade students must also select 5 alternate classes. Rising 10<sup>th</sup> -12<sup>th</sup> much choose 4 alternate classes. Alternates are classes that the student would be okay taking, if some of their 8 main classes are full or do not work in their schedule.
- Most students, depending on their grade level, take an English class, a Mathematics class, a Science Class and a Social Studies Class. They then choose electives to complete their 8 total choices.
- Electives can be any class in any area of instruction, for example a second math class in the same school year.
- Wake County has an Open Enrollment Policy. Students can register for any class they wish to take as long as they have taken the prerequisite class. This includes taking an Honors level or AP level class.

# Graduation Requirements



- English I, II, III, IV
- Math 1, 2, 3 and a 4<sup>th</sup> math after Math 3
- World History, Civic Literacy, American History, Economics and Personal Finance
- Earth Science, Biology, a Physical Science
- Health & PE
- Electives of student's choice for a total of 26 credits

# Typical Primary Selections for 9th Graders

- English I
- Math
- World History
- Earth Science or Biology
- Health & PE
- Elective (may be a math elective)
- Elective
- Elective



# Sample 9th grade Schedule

- **1<sup>st</sup> semester**

English I  
Health and PE  
Honors Biology  
Band

- **2<sup>nd</sup> semester**

World History  
Spanish I  
Band  
Math 2 Honors



# Selection of Classes

Rising 9<sup>th</sup> graders from Public Schools will register with their 8<sup>th</sup> grade counselor

Rising 9<sup>th</sup> graders from Charter, Private and Homeschools will need to first complete the enrollment process found here: <https://www.wcpss.net/domain/5805>. After completing the enrollment process, parents may email Mr. Greene for a virtual appointment to select classes.

Questions can be directed to Eric Greene, Dean of Students at [egreene@wcpss.net](mailto:egreene@wcpss.net)

# Academic or Honors?



Honors classes are more rigorous than standard level classes, and they move at a faster pace.

Students in honors classes are expected to:

- Have a good work ethic
- Be self-motivated/ independent learners
- Have good time management and study skills
- Take responsibility for their learning
- Be willing to put in extra work to succeed
- Have excellent reading and writing skills





# COURSE DESCRIPTIONS

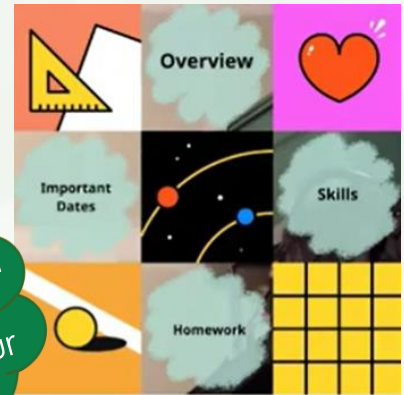
Descriptions for all courses taught at Leesville can be found here:

**[LRHS COURSE INFORMATION](#)**

# 9th Grade English Options

- Integrated Reading (paired with English 1, for students who need extra reading support. Class is year long)
- English I
- English I Honors
- English I Paideia
- English I Paideia Honors

Watch the video from the Rising 9<sup>th</sup> Grade Open House from our English Department.



**Welcome to High School English!**

In this welcome video, I'll talk about what you can expect from class this semester!

# 9th Grade Science Options



EARTH SCIENCE



HONORS EARTH  
SCIENCE



HONORS  
BIOLOGY

Watch this video from our Science department chair to learn more about class offerings and what class to take.

WELCOME TO REGISTRATION NIGHT!!!!

WHAT YOU NEED TO KNOW ABOUT  
LEESVILLE HIGH SCHOOL  
SCIENCE



0:10 / 10:21

Video player controls including play, volume, and closed captions (CC) buttons.

# 9th Grade Social Studies Options

World History

Honors World History

World History Paideia

World History Paideia Honors

AP World History

Plan ahead and see the courses  
you can take each year.



Social Studies:  
Course Sequence

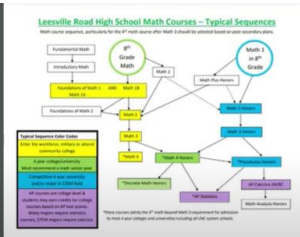
Watch this video  
from one of our  
teachers to learn  
about which class  
to take.

The video thumbnail features a yellow background. At the top center is a gold fleur-de-lis logo. Below it, the text 'World History' is written in a bold, black serif font. Underneath that, in a smaller black sans-serif font, is the text 'Overview of World History course offerings at Leesville Road High School'. To the left of the text is a line drawing of a silver helmet with a visor. To the right is a line drawing of a stack of books with a yellow ribbon bookmark. In the bottom right corner, there is a small inset video frame showing a woman with glasses speaking. At the very bottom of the thumbnail, there is a video player control bar with a play button, a progress bar, and other standard controls.

# 9th Grade Math Options

Class taken in 8 <sup>th</sup> grade	Performance in 8 <sup>th</sup> grade	Recommended Class
Math 8 in 8 <sup>th</sup> grade	A or Level 4 or 5 on 6 <sup>th</sup> grade EOG	NC Math 1
	B, C or D	NC Math 1A and 1B
	F, not proficient on 6 <sup>th</sup> grade EOG	Fundamental and/or Introductory Math
Math I in 8 <sup>th</sup> grade	A or B	Honors Math 2
	C and Level 4 or above on 6 <sup>th</sup> grade EOG	Honors Math 2
	C and Level 1 - 3 on 6 <sup>th</sup> grade EOG	Math 2 OR Math Plus Honors and Math 2 / Honors Math 2
	D	Math 2 OR Math Plus Honors and Math 2 / Honors Math 2
NC Math 2		NC Math 3 / Honors NC Math3

Watch the video from the Rising 9<sup>th</sup> Grade Open House from our Math department chair.



# World Languages

- Foreign Language courses are not required for high school graduation.
- Two consecutive levels of a foreign language is required for entrance into a 4-year university.
- Spanish, French, and Latin are offered at LRHS.

Spanish Program

French Program

Latin Program

Learn about our  
World Language  
courses here

World Languages Department

# Electives - Arts

Learn more about  
our Fine Arts  
courses here:

Band Dance Theater Arts Choir



Orchestra Theater Tech Visual Arts

**Fine Arts Department**

Modern Dance-Beginning

Theatre Arts-Beginning

Technical Theatre-Beginning

Visual Arts-Beginning

Band-Intermediate-yearlong-takes 2 spots

Band-Concert-yearlong-takes 2 spots

Band-Symphonic-yearlong-takes 2 spots

Vocal Music-Mixed Choir-yearlong-take 2 spots

Vocal Music-Mixed Choir-One Semester only

Orchestra-Intermediate-yearlong-takes 2 spots

Orchestra-Proficient-yearlong-take 2 spots

- Apparel I
- Interior Design I
- Foods and Nutrition I
- Culinary Arts and Hospitality I
- Child Development
- Foundations of Health Science
- Principles of Business & Finance
- Microsoft Word & PowerPoint
- Microsoft Word & PowerPoint Honors
- Microsoft Excel Honors
- Project Management
- Construction Core
- Adobe Visual Design
- Drafting I
- Digital Design and Animation
- Technology Engineering and Design
- Marketing
- Sports and Entertainment Marketing I

# Electives - Career Technical Education (CTE)



# Other Electives

- Trends in Young Adult Literature
- Speech I
- Geography
- Physical Fitness I
- Weight Training I
- Team Sports

# Special Education

- Transition meetings will take place in the spring with Middle Schools
- If there is a significant need, middle schools invite a High School Special Education Teacher
- MS case managers provide HS with updated IEP; so that students are scheduled correctly
- If parents have questions, they need to contact the MS case manager or the LRHS Special Education Department Chair, D. Swann at [dswann@wcpss.net](mailto:dswann@wcpss.net)

# Student Services Staff

- |                      |                    |  |
|----------------------|--------------------|--|
| ● Nadara Albanese    | Students A-C       | <a href="mailto:nalbanese@wcpss.net">nalbanese@wcpss.net</a>             |
| ● Pam Saldanha       | Students D-He      | <a href="mailto:pleech-saldanha@wcpss.net">pleech-saldanha@wcpss.net</a> |
| ● Sabra Feeney       | Students Hi-Me     | <a href="mailto:sfeeney@wcpss.net">sfeeney@wcpss.net</a>                 |
| ● Vanta Rogers       | Students Mi-Sc     | <a href="mailto:vrogers2@wcpss.net">vrogers2@wcpss.net</a>               |
| ● Sarah Oxendine     | Students Se-Z      | <a href="mailto:soxendine@wcpss.net">soxendine@wcpss.net</a>             |
| ● Dr. Jessica Huber  | SAP Counselor      | <a href="mailto:jhuber@wcpss.net">jhuber@wcpss.net</a>                   |
| ● Rasheedah Fletcher | Academic Support   | <a href="mailto:rfletcher@wcpss.net">rfletcher@wcpss.net</a>             |
| ● Eric Greene        | Dean of Students   | <a href="mailto:egreene@wcpss.net">egreene@wcpss.net</a>                 |
| ● Anita Reeves       | School Registrar   | <a href="mailto:areeves@wcpss.net">areeves@wcpss.net</a>                 |
| ● Sarah Shingler     | Clerical Assistant | <a href="mailto:smshingler@wcpss.net">smshingler@wcpss.net</a>           |

Welcome to Leesville !

