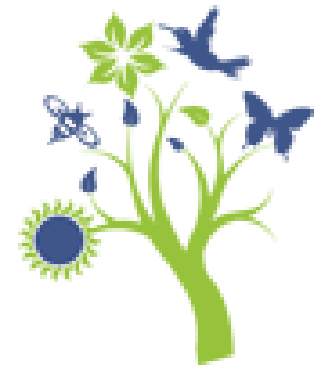


Kingswood Montessori STEM Magnet
200 East Johnson Street, Cary NC 27513
(919) 460-3481 www.wcpss.net/kingswoodes

Student * Parent * School Compact



AS A STUDENT, I PROMISE TO...

- ❖ Persevere, even when learning is difficult.
- ❖ Take an active role in my own learning.
- ❖ Collaborate, Communicate, be Creative, and be a Critical thinker.
- ❖ Stay safe
Works hard
Is kind and respectful
Manage actions
- ❖ Respect myself and others
#Otherpeoplematter

AS A PARENT, I PROMISE TO...

- ❖ Communicate and work with teachers, staff, and administrators to encourage my child's learning and positive behavior.
- ❖ Be present at school functions and parent-teacher conferences
- ❖ Partner with Kingswood staff to support my child's learning.

AS A MEMBER OF KINGSWOOD STAFF, I PROMISE TO...

- ❖ Create a nurturing, supportive learning environment based on positive behavior principles.
- ❖ provide a relevant and engaging education
- ❖ prepare students for higher levels of learning who are collaborative, creative, effective communicators and critical thinkers
- ❖ communicate with families to support student learning

Our Vision

Kingswood Elementary invests in genuine, long-lasting relationships with students and their families. Our student-centered learning environment focuses on equity, high expectations, social-emotional development, and educating the whole child.

We Value...

- ❖ a safe enriching learning culture
- ❖ a Montessori prepared environment focused on rigorous and relevant personalized learning
- ❖ strong school, family and community relationships
- ❖ development of the whole child socially, emotionally, academically and physically

