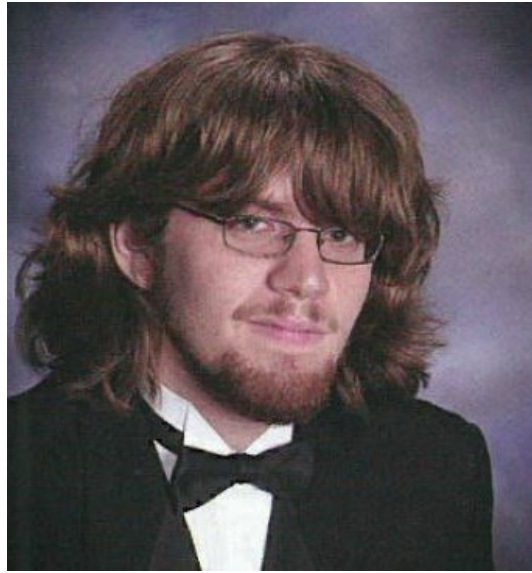




# Graduate Spotlight



**Chris Flaherty - Class of 2008**

*Technical Support Engineer*

“Currently I am a Technical Support Engineer for 3D Systems Geomagic. It's a 3D printing company at large, but more specifically, I'm part of an engineering team that directly supports a suite of specialized 3D software known under the Geomagic brand.”

“The PLTW engineering courses at Southeast had me so well-versed in CAD that I took and passed the final for my college CAD course within the first few weeks of class.”

“CAD knowledge is now absolutely essential to my every-day work. I work with software which interfaces with 3D-scanners, allowing for the gathered data to be used for CAD-based mechanical quality inspection, or used to produce CAD models through reverse-engineering methods.”

“The software also ties into 3D printing, so understanding the process of mechanical design is key. And, I get to play with a lot of neat toys.”

