

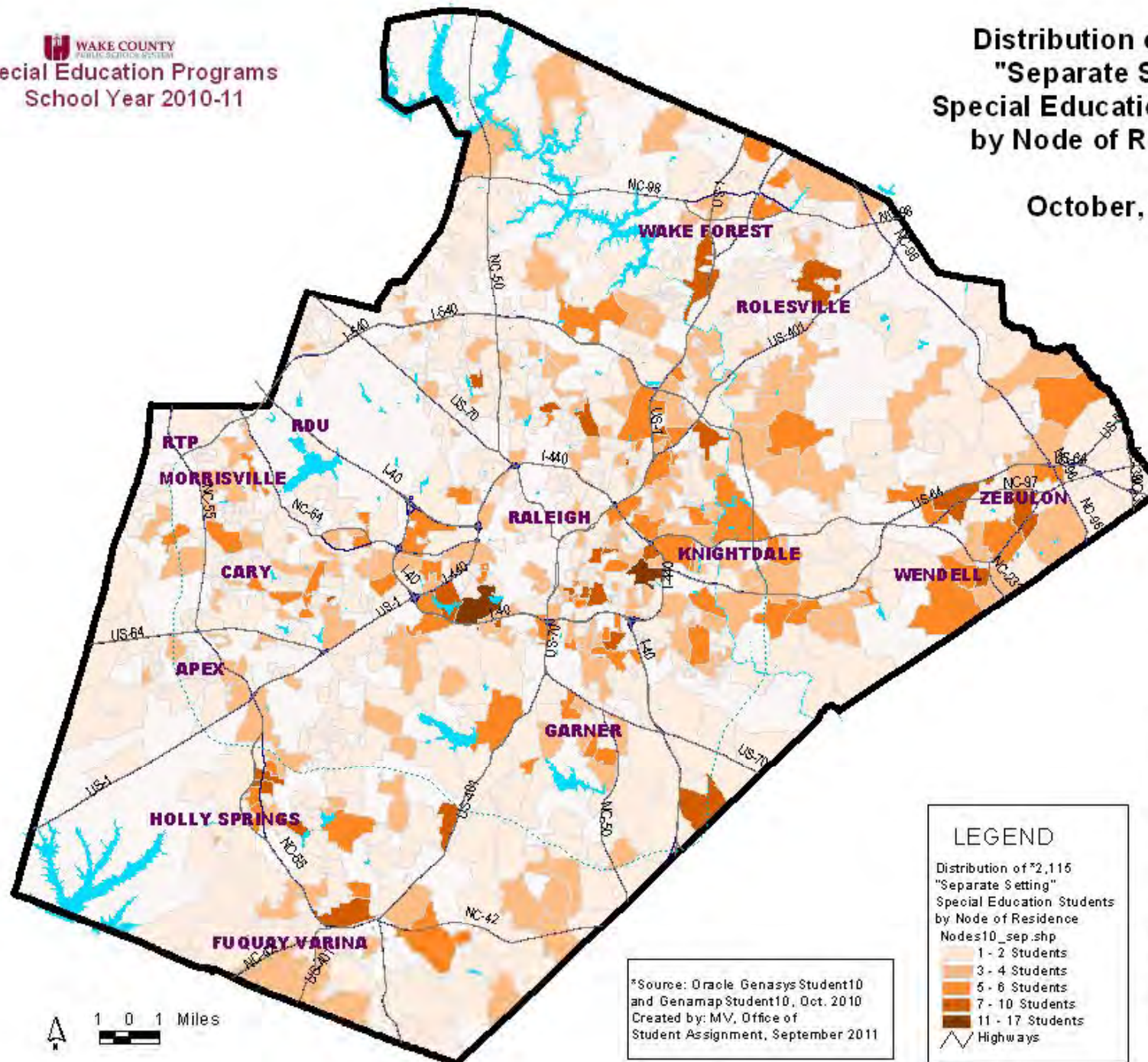
---

Ve.

**Special Education Services**

**Distribution of \*2,115**  
**"Separate Setting"**  
**Special Education Students**  
**by Node of Residence**

**October, 2010**





 1 0 1 Miles

\*Source: Oracle Genasys Student10  
 and Genamap Student10, Oct. 2010  
 Created by: MV, Office of  
 Student Assignment, September 2011

**LEGEND**

Distribution of \*2,115  
"Separate Setting"  
Special Education Students  
by Node of Residence  
Nodes10\_sep.shp

- 1 - 2 Students
- 3 - 4 Students
- 5 - 6 Students
- 7 - 10 Students
- 11 - 17 Students
-  Highways

Special Education  
Separate Setting  
Codes

2
3
7
8
9
10
12
19
50
54
77
81
84
85
86

WCPSS Summary of Special Education Students by Program and by Level  
April 1, 2010 (School Year 2009-10)

Special Education Program	Group	ELEMENTARY	MIDDLE	HIGH	Total Spec. Ed. Students KI-12 by Program	Percent KI-12 by Program	Total Spec. Ed. Students Pre-School (Pre-K) by Program	Percent Pre-K by Program	Total Spec. Ed. Students Pre-K to 12 Grade
Autistic	AU	904	386	338	1,628	1.17%	218	9.7%	1,846
Deaf Blind	DB	0	0	0	0	0.00%	1	0.0%	1
Serious Emotional Disability	ED	256	262	306	824	0.59%	0	0.0%	824
Intellectual Disability - Mild	IDMI	219	221	321	761	0.55%	0	0.0%	761
Deaf / Hearing Impaired	HI	73	34	24	131	0.09%	20	0.9%	151
Learning Disabled	LD	2,578	2,156	2,350	7,084	5.08%	0	0.0%	7,084
Multihandicapped	MU	76	25	40	141	0.10%	31	1.4%	172
Other Health Impaired	OH	1,651	1,502	1,486	4,639	3.32%	0	0.0%	4,639
Orthopedically Impaired	OI	20	22	16	58	0.04%	1	0.0%	59
Speech/Language Impaired	SI	1,099	52	24	1,175	0.84%	309	13.8%	1,484
Intellectual Disability - Severe	IDSE	34	18	21	73	0.05%	0	0.0%	73
Intellectual Disability - Moderate	IDMO	110	90	111	311	0.22%	0	0.0%	311
Visually Impaired	VI	32	15	22	69	0.05%	11	0.5%	80
Traumatic Brain Injured	TB	12	14	21	47	0.03%	1	0.0%	48
Developmentally Delayed	DD	777	0	0	777	0.56%	669	29.9%	1,446
Deaf / Hearing Impaired	DF	4	0	1	5	0.00%	0	0.0%	5
<b>TOTAL Special Education Students by Level, April 1, 2010</b>		<b>7,845</b>	<b>4,797</b>	<b>5,081</b>	<b>17,723</b>	<b>12.70%</b>	<b>1,261</b>	<b>56.3%</b>	<b>18,984</b>
<b>TOTAL WCPSS Students by Level, April 1, 2010</b>		<b>68,673</b>	<b>31,730</b>	<b>39,174</b>	<b>139,577</b>		<b>2,238</b>		<b>141,815</b>
<b>Percent of Special Education Students by Level, April 1, 2010</b>		<b>11.42%</b>	<b>15.12%</b>	<b>12.97%</b>	<b>12.70%</b>		<b>56.34%</b>		<b>13.39%</b>

Data Sources:

WCPSS Mainframe Reports dated 4/1/2010:  
SISP0824\_OUTPUT; SILD0849\_OUTPUT

WCPSS Summary of Special Education Students by School and by Student Setting  
 April 1, 2010 (School Year 2009-10)

School Information			School Membership April 1, 2010			Special Education Headcount April 1, 2010						Student Setting Grades K-12, April 1, 2010					
Code	School Name	Level	PreK-12 Total	K-12 Total	Pre-K Total	PreK-12 Total	K-12 Total	Pre-K Total	Percent Pre-K -12	Percent K -12	Percent Pre-K	REGULAR Setting	RESOURCE Setting	SEPARATE Setting	Homebound/ Hospital Environment	Separate School	Other
304	ADAMS ES	ELEMENTARY	731	725	6	91	85	6	12.4%	11.7%	100.0%	51	23	11			
308	APEX ES	ELEMENTARY	643	643	0	74	74	0	11.5%	11.5%	0.0%	50	22	2			
320	AVERSBORO ES	ELEMENTARY	600	576	24	71	61	10	11.8%	10.6%	41.7%	34	7	20			
326	BAILEYWICK ES	ELEMENTARY	477	451	26	47	39	8	9.9%	8.6%	30.8%	27	10	2			
327	BALLENTINE ES	ELEMENTARY	692	692	0	75	75	0	10.8%	10.8%	0.0%	62	8	5			
325	BANKS ROAD ES	ELEMENTARY	600	592	8	71	67	4	11.8%	11.3%	50.0%	43	20	4			
329	BARWELL ROAD ES	ELEMENTARY	829	803	26	108	100	8	13.0%	12.5%	30.8%	56	36	8			
328	BAUCOM ES	ELEMENTARY	722	714	8	86	78	8	11.9%	10.9%	100.0%	58	12	8			
334	BRASSFIELD ES	ELEMENTARY	780	780	0	84	84	0	10.8%	10.8%	0.0%	66	10	7	1		
336	BRENTWOOD ES	ELEMENTARY	442	404	38	58	35	23	13.1%	8.7%	60.5%	22	11	2			
340	BRIARCLIFF ES	ELEMENTARY	571	541	30	91	73	18	15.9%	13.5%	60.0%	30	34	8			1
342	BRIER CREEK ES	ELEMENTARY	743	736	7	64	57	7	8.6%	7.7%	100.0%	48	8				1
344	BROOKS ES	ELEMENTARY	561	553	8	77	69	8	13.7%	12.5%	100.0%	43	8	18			
352	BUGG ES	ELEMENTARY	418	408	10	75	65	10	17.9%	15.9%	100.0%	40	8	16			1
358	CARPENTER ES	ELEMENTARY	833	825	8	63	55	8	7.6%	6.7%	100.0%	53	2				
362	CARVER ES	ELEMENTARY	449	431	18	71	62	9	15.8%	14.4%	50.0%	27	18	17			
364	CARY ES	ELEMENTARY	511	505	6	91	85	6	17.8%	16.8%	100.0%	50	12	22	1		
369	CEDAR FORK ES	ELEMENTARY	851	843	8	65	58	7	7.6%	6.9%	87.5%	38	8	12			
376	COMBS ES	ELEMENTARY	819	814	5	84	80	4	10.3%	9.8%	80.0%	64	11	5			
380	CONN ES	ELEMENTARY	597	585	12	75	63	12	12.6%	10.8%	100.0%	37	16	10			
384	CREECH ROAD ES	ELEMENTARY	529	519	10	75	75	0	14.2%	14.5%	0.0%	58	6	11			
390	DAVIS DRIVE ES	ELEMENTARY	968	968	0	88	88	0	9.1%	9.1%	0.0%	58	25	5			
393	DILLARD DRIVE ES	ELEMENTARY	725	704	21	79	70	9	10.9%	9.9%	42.9%	48	9	13			
396	DOUGLAS ES	ELEMENTARY	653	632	21	86	65	21	13.2%	10.3%	100.0%	31	21	12	1		
398	DURANT ROAD ES	ELEMENTARY	964	953	11	133	122	11	13.8%	12.8%	100.0%	79	28	15			
403	EAST GARNER ES	ELEMENTARY	745	732	13	109	102	7	14.6%	13.9%	53.8%	36	37	29			
414	FARMINGTON WOODS ES	ELEMENTARY	804	804	0	80	80	0	10.0%	10.0%	0.0%	52	15	13			
417	FOREST PINES DRIVE ES	ELEMENTARY	800	791	9	92	83	9	11.5%	10.5%	100.0%	60	13	10			
413	FORESTVILLE ROAD ES	ELEMENTARY	696	677	19	85	83	2	12.2%	12.3%	10.5%	56	18	9			
415	FOX ROAD ES	ELEMENTARY	843	843	0	99	99	0	11.7%	11.7%	0.0%	66	17	15	1		
416	FULLER ES	ELEMENTARY	530	530	0	44	44	0	8.3%	8.3%	0.0%	21	10	13			
420	FUQUAY-VARINA ES	ELEMENTARY	791	752	39	113	90	23	14.3%	12.0%	59.0%	72	12	6			
440	GREEN ES	ELEMENTARY	541	541	0	80	80	0	14.8%	14.8%	0.0%	58	19	3			
439	GREEN HOPE ES	ELEMENTARY	899	879	20	85	65	20	9.5%	7.4%	100.0%	38	19	8			
451	HARRIS CREEK ES	ELEMENTARY	859	835	24	118	110	8	13.7%	13.2%	33.3%	69	24	17			

WCPSS Summary of Special Education Students by School and by Student Setting  
 April 1, 2010 (School Year 2009-10)

School Information			School Membership April 1, 2010			Special Education Headcount April 1, 2010						Student Setting Grades K-12, April 1, 2010					
Code	School Name	Level	PreK-12 Total	K-12 Total	Pre-K Total	PreK-12 Total	K-12 Total	Pre-K Total	Percent Pre-K -12	Percent K -12	Percent Pre-K	REGULAR Setting	RESOURCE Setting	SEPARATE Setting	Homebound/ Hospital Environment	Separate School	Other
306	HERBERT AKINS ROAD ES	ELEMENTARY	670	656	14	76	73	3	11.3%	11.1%	21.4%	51	16	6			
454	HERITAGE ES	ELEMENTARY	884	862	22	137	115	22	15.5%	13.3%	100.0%	70	42	3			
443	HIGHCROFT DRIVE ES	ELEMENTARY	787	776	11	95	85	10	12.1%	11.0%	90.9%	62	11	11			1
442	HILBURN DRIVE ES	ELEMENTARY	544	522	22	67	61	6	12.3%	11.7%	27.3%	28	13	20			
446	HODGE ROAD ES	ELEMENTARY	767	749	18	76	76	0	9.9%	10.1%	0.0%	39	24	13			
457	HOLLY GROVE ES	ELEMENTARY	797	789	8	119	112	7	14.9%	14.2%	87.5%	60	28	24			
449	HOLLY RIDGE ES	ELEMENTARY	719	707	12	72	60	12	10.0%	8.5%	100.0%	50	3	7			
447	HOLLY SPRINGS ES	ELEMENTARY	1072	1066	6	141	135	6	13.2%	12.7%	100.0%	68	53	14			
448	HUNTER ES	ELEMENTARY	828	828	0	88	88	0	10.6%	10.6%	0.0%	53	26	8			1
452	JEFFREYS GROVE ES	ELEMENTARY	525	488	37	82	58	24	15.6%	11.9%	64.9%	44	12	2			
453	JONES DAIRY ES	ELEMENTARY	832	825	7	107	100	7	12.9%	12.1%	100.0%	82	16	2			
456	JOYNER ES	ELEMENTARY	621	602	19	56	50	6	9.0%	8.3%	31.6%	29	8	13			1
460	KINGSWOOD ES	ELEMENTARY	385	358	27	67	51	16	17.4%	14.2%	59.3%	27	12	11	1		
464	KNIGHTDALE ES	ELEMENTARY	570	542	28	71	59	12	12.5%	10.9%	42.9%	31	20	8			1
468	LACY ES	ELEMENTARY	841	830	11	126	115	11	15.0%	13.9%	100.0%	84	22	8	1		
474	LAKE MYRA ES	ELEMENTARY	540	509	31	68	64	4	12.6%	12.6%	12.9%	40	13	11			
467	LAUREL PARK ES	ELEMENTARY	937	931	6	80	74	6	8.5%	7.9%	100.0%	42	25	7			
470	LEAD MINE ES	ELEMENTARY	464	464	0	59	59	0	12.7%	12.7%	0.0%	38	13	8			
469	LEESVILLE ROAD ES	ELEMENTARY	1086	1086	0	117	117	0	10.8%	10.8%	0.0%	73	28	16			
476	LINCOLN HEIGHTS ES	ELEMENTARY	568	561	7	104	97	7	18.3%	17.3%	100.0%	74	6	17			
480	LOCKHART ES	ELEMENTARY	766	745	21	109	88	21	14.2%	11.8%	100.0%	58	25	5			
488	LYNN ROAD ES	ELEMENTARY	641	618	23	89	78	11	13.9%	12.6%	47.8%	42	27	9			
494	MIDDLE CREEK ES	ELEMENTARY	988	980	8	148	140	8	15.0%	14.3%	100.0%	91	33	16			
496	MILLBROOK ES	ELEMENTARY	787	771	16	85	85	0	10.8%	11.0%	0.0%	43	28	14			
501	MILLS PARK ES	ELEMENTARY	831	808	23	81	58	23	9.7%	7.2%	100.0%	31	20	7			
504	MORRISVILLE ES	ELEMENTARY	819	819	0	83	83	0	10.1%	10.1%	0.0%	67	16				
508	MT VERNON SCHOOL	ELEMENTARY	131	131	0	68	68	0	51.9%	51.9%	0.0%	14	1	13			40
514	NORTH FOREST PINES DRIVE ES	ELEMENTARY	861	855	6	81	75	6	9.4%	8.8%	100.0%	52	17	6			
516	NORTH RIDGE ES	ELEMENTARY	772	772	0	64	64	0	8.3%	8.3%	0.0%	33	30	1			
520	NORTHWOODS ES	ELEMENTARY	562	540	22	101	79	22	18.0%	14.6%	100.0%	46	30	3			
522	OAK GROVE ES	ELEMENTARY	860	860	0	116	116	0	13.5%	13.5%	0.0%	86	30				
524	OLDS ES	ELEMENTARY	319	319	0	42	42	0	13.2%	13.2%	0.0%	19	22	1			
523	OLIVE CHAPEL ES	ELEMENTARY	1035	1035	0	117	117	0	11.3%	11.3%	0.0%	87	14	16			
525	PARTNERSHIP ES	ELEMENTARY	323	323	0	64	64	0	19.8%	19.8%	0.0%	48	10	6			

WCPSS Summary of Special Education Students by School and by Student Setting  
April 1, 2010 (School Year 2009-10)

School Information			School Membership April 1, 2010			Special Education Headcount April 1, 2010						Student Setting Grades K-12, April 1, 2010					
Code	School Name	Level	PreK-12 Total	K-12 Total	Pre-K Total	PreK-12 Total	K-12 Total	Pre-K Total	Percent Pre-K -12	Percent K -12	Percent Pre-K	REGULAR Setting	RESOURCE Setting	SEPARATE Setting	Homebound/ Hospital Environment	Separate School	Other
530	PENNY ROAD ES	ELEMENTARY	642	642	0	98	98	0	15.3%	15.3%	0.0%	62	15	21			
531	PLEASANT UNION ES	ELEMENTARY	704	681	23	85	62	23	12.1%	9.1%	100.0%	41	20	1			
532	POE ES	ELEMENTARY	385	341	44	30	29	1	7.8%	8.5%	2.3%	16	13				
536	POWELL ES	ELEMENTARY	441	426	15	48	48	0	10.9%	11.3%	0.0%	22	22	4			
540	RAND ROAD ES	ELEMENTARY	623	607	16	99	83	16	15.9%	13.7%	100.0%	49	21	12			1
542	REEDY CREEK ES	ELEMENTARY	662	662	0	79	79	0	11.9%	11.9%	0.0%	30	26	23			
302	RIVER BEND ES	ELEMENTARY	649	633	16	69	66	3	10.6%	10.4%	18.8%	51	12	3			
544	ROLESVILLE ES	ELEMENTARY	637	629	8	60	52	8	9.4%	8.3%	100.0%	30	15	6		1	
548	ROOT ES	ELEMENTARY	492	481	11	49	45	4	10.0%	9.4%	36.4%	29	8	7		1	
550	SALEM ES	ELEMENTARY	994	985	9	124	115	9	12.5%	11.7%	100.0%	84	19	11			1
554	SANFORD CREEK ES	ELEMENTARY	617	614	3	89	86	3	14.4%	14.0%	100.0%	30	30	26			
560	SMITH ES	ELEMENTARY	502	473	29	65	55	10	12.9%	11.6%	34.5%	36	13	6			
564	STOUGH ES	ELEMENTARY	536	536	0	56	56	0	10.4%	10.4%	0.0%	35	11	10			
568	SWIFT CREEK ES	ELEMENTARY	484	484	0	70	70	0	14.5%	14.5%	0.0%	40	18	11			1
569	SYCAMORE CREEK ES	ELEMENTARY	721	710	11	72	62	10	10.0%	8.7%	90.9%	43	14	5			
570	TIMBER DRIVE ES	ELEMENTARY	833	833	0	111	111	0	13.3%	13.3%	0.0%	57	39	15			
571	TURNER CREEK ES	ELEMENTARY	962	945	17	105	103	2	10.9%	10.9%	11.8%	78	16	8	1		
572	UNDERWOOD ES	ELEMENTARY	519	519	0	51	51	0	9.8%	9.8%	0.0%	28	10	13			
576	VANCE ES	ELEMENTARY	620	606	14	56	55	1	9.0%	9.1%	7.1%	34	20	1			
580	VANDORA SPRINGS ES	ELEMENTARY	550	527	23	77	54	23	14.0%	10.2%	100.0%	26	18	10			
584	WAKE FOREST ES	ELEMENTARY	630	612	18	62	61	1	9.8%	10.0%	5.6%	33	13	15			0
593	WAKEFIELD ES	ELEMENTARY	836	836	0	98	98	0	11.7%	11.7%	0.0%	58	26	13	1		
597	WAKELON ES	ELEMENTARY	551	532	19	60	54	6	10.9%	10.2%	31.6%	26	20	7			1
596	WASHINGTON ES	ELEMENTARY	628	604	24	138	114	24	22.0%	18.9%	100.0%	73	19	22			
598	WEATHERSTONE ES	ELEMENTARY	854	847	7	80	73	7	9.4%	8.6%	100.0%	48	17	7		1	
600	WENDELL ES	ELEMENTARY	432	432	0	68	68	0	15.7%	15.7%	0.0%	51	7	10			
606	WEST LAKE ES	ELEMENTARY	807	783	24	87	63	24	10.8%	8.0%	100.0%	49	10	4			
616	WILBURN ES	ELEMENTARY	716	716	0	92	92	0	12.8%	12.8%	0.0%	56	28	8			
618	WILDWOOD FOREST ES	ELEMENTARY	753	745	8	70	62	8	9.3%	8.3%	100.0%	31	18	13			
620	WILEY ES	ELEMENTARY	448	448	0	55	55	0	12.3%	12.3%	0.0%	37	6	12			
624	WILLOW SPRINGS ES	ELEMENTARY	900	900	0	98	98	0	10.9%	10.9%	0.0%	65	31	2			
626	YATES MILL ES	ELEMENTARY	556	539	17	84	84	0	15.1%	15.6%	0.0%	43	32	9			
628	YORK ES	ELEMENTARY	382	376	6	51	51	0	13.4%	13.6%	0.0%	24	14	13			
632	ZEBULON ES	ELEMENTARY	528	506	22	70	57	13	13.3%	11.3%	59.1%	32	21	4			
312	APEX MS	MIDDLE	1017	1017	0	117	117	0	11.5%	11.5%	0.0%	83	34				

WCPSS Summary of Special Education Students by School and by Student Setting  
April 1, 2010 (School Year 2009-10)

School Information			School Membership April 1, 2010			Special Education Headcount April 1, 2010						Student Setting Grades K-12, April 1, 2010					
Code	School Name	Level	PreK-12 Total	K-12 Total	Pre-K Total	PreK-12 Total	K-12 Total	Pre-K Total	Percent Pre-K -12	Percent K -12	Percent Pre-K	REGULAR Setting	RESOURCE Setting	SEPARATE Setting	Homebound/ Hospital Environment	Separate School	Other
356	CARNAGE MS	MIDDLE	1036	1036	0	125	125	0	12.1%	12.1%	0.0%	66	47	9	1	2	
360	CARROLL MS	MIDDLE	696	696	0	109	109	0	15.7%	15.7%	0.0%	57	29	20	3		
370	CENTENNIAL CAMPUS MS	MIDDLE	671	671	0	145	145	0	21.6%	21.6%	0.0%	110	33		2		
388	DANIELS MS	MIDDLE	1218	1218	0	178	178	0	14.6%	14.6%	0.0%	129	28	20	1		
391	DAVIS DRIVE MS	MIDDLE	1169	1169	0	129	129	0	11.0%	11.0%	0.0%	88	35	5		1	
394	DILLARD DRIVE MS	MIDDLE	1178	1178	0	195	195	0	16.6%	16.6%	0.0%	103	57	34		1	
399	DURANT ROAD MS	MIDDLE	1298	1298	0	230	230	0	17.7%	17.7%	0.0%	154	62	10	3	1	
402	EAST CARY MS	MIDDLE	866	866	0	146	146	0	16.9%	16.9%	0.0%	103	28	11	4		
404	EAST GARNER MS	MIDDLE	1124	1124	0	179	179	0	15.9%	15.9%	0.0%	115	49	10	5		
408	EAST MILLBROOK MS	MIDDLE	1226	1226	0	186	186	0	15.2%	15.2%	0.0%	94	79	8	3	2	
410	EAST WAKE MS	MIDDLE	990	990	0	189	189	0	19.1%	19.1%	0.0%	114	42	28	3	2	
424	FUQUAY-VARINA MS	MIDDLE	980	980	0	179	179	0	18.3%	18.3%	0.0%	122	31	21	4	1	
444	HERITAGE MS	MIDDLE	1266	1266	0	176	176	0	13.9%	13.9%	0.0%	126	39	10	1		
450	HOLLY RIDGE MS	MIDDLE	1219	1219	0	158	158	0	13.0%	13.0%	0.0%	115	31	10	1	1	
471	LEESVILLE ROAD MS	MIDDLE	1278	1278	0	170	170	0	13.3%	13.3%	0.0%	110	46	10	4		
472	LIGON MS	MIDDLE	1061	1061	0	138	138	0	13.0%	13.0%	0.0%	79	34	24		1	
484	LUFKIN ROAD MS	MIDDLE	1163	1163	0	161	161	0	13.8%	13.8%	0.0%	118	42		1		
492	MARTIN MS	MIDDLE	1053	1053	0	176	176	0	16.7%	16.7%	0.0%	106	44	24	1	1	
506	MOORE SQUARE MUSEUMS MS	MIDDLE	472	472	0	120	120	0	25.4%	25.4%	0.0%	80	33	2	2	3	
512	NORTH GARNER MS	MIDDLE	1232	1232	0	190	190	0	15.4%	15.4%	0.0%	95	57	32	6		
400	REEDY CREEK MS	MIDDLE	809	809	0	136	136	0	16.8%	16.8%	0.0%	80	42	12	1	1	
438	RIVER OAKS MS	MIDDLE	68	68	0	8	8	0	11.8%	11.8%	0.0%	7			1		
551	SALEM MS	MIDDLE	1333	1333	0	163	163	0	12.2%	12.2%	0.0%	111	32	19		1	
592	WAKE FOREST-ROLESVILLE MS	MIDDLE	1165	1165	0	147	147	0	12.6%	12.6%	0.0%	98	41	6	1	1	
594	WAKEFIELD MS	MIDDLE	1200	1200	0	173	173	0	14.4%	14.4%	0.0%	122	30	18	1	2	
601	WENDELL MS	MIDDLE	866	866	0	162	162	0	18.7%	18.7%	0.0%	99	42	18	1	2	
604	WEST CARY MS	MIDDLE	1068	1068	0	124	124	0	11.6%	11.6%	0.0%	85	36		3		
607	WEST LAKE MS	MIDDLE	1449	1449	0	188	188	0	13.0%	13.0%	0.0%	115	52	18	2	1	
608	WEST MILLBROOK MS	MIDDLE	876	876	0	115	115	0	13.1%	13.1%	0.0%	75	29	10		1	
636	ZEBULON MS	MIDDLE	553	553	0	111	111	0	20.1%	20.1%	0.0%	62	36	12	1		
316	APEX HS	SENIOR	2236	2236	0	262	262	0	11.7%	11.7%	0.0%	197	43	21	1		
318	ATHENS DRIVE HS	SENIOR	1761	1761	0	285	285	0	16.2%	16.2%	0.0%	86	126	63	8	2	
348	BROUGHTON HS	SENIOR	2234	2234	0	251	251	0	11.2%	11.2%	0.0%	182	39	25	3	2	

WCPSS Summary of Special Education Students by School and by Student Setting  
April 1, 2010 (School Year 2009-10)

School Information			School Membership April 1, 2010			Special Education Headcount April 1, 2010						Student Setting Grades K-12, April 1, 2010					
Code	School Name	Level	PreK-12 Total	K-12 Total	Pre-K Total	PreK-12 Total	K-12 Total	Pre-K Total	Percent Pre-K -12	Percent K -12	Percent Pre-K	REGULAR Setting	RESOURCE Setting	SEPARATE Setting	Homebound/ Hospital Environment	Separate School	Other
368	CARY HS	SENIOR	1981	1981	0	275	275	0	13.9%	13.9%	0.0%	191	49	29	5	1	
702	EAST WAKE ARTS/EDU/GLOBAL	SENIOR	382	382	0	89	89	0	23.3%	23.3%	0.0%	39	18	30	2		
703	EAST WAKE ENGINEERING SYSTEMS	SENIOR	369	369	0	71	71	0	19.2%	19.2%	0.0%	38	20	11	2		
700	EAST WAKE HEALTH SCIENC	SENIOR	358	358	0	48	48	0	13.4%	13.4%	0.0%	24	12	11	1		
701	EAST WAKE INTEGRATED TECH	SENIOR	330	330	0	63	63	0	19.1%	19.1%	0.0%	26	21	13	3		
412	ENLOE HS	SENIOR	2609	2609	0	310	310	0	11.9%	11.9%	0.0%	250		49	10	1	
428	FUQUAY-VARINA HS	SENIOR	1845	1845	0	242	242	0	13.1%	13.1%	0.0%	136	62	39	2	3	
436	GARNER HS	SENIOR	2199	2199	0	308	308	0	14.0%	14.0%	0.0%	169	68	50	20	1	
441	GREEN HOPE HS	SENIOR	1957	1957	0	201	201	0	10.3%	10.3%	0.0%	112	59	27	3		
455	HOLLY SPRINGS HS	SENIOR	1804	1804	0	238	238	0	13.2%	13.2%	0.0%	141	55	37	5		
466	KNIGHTDALE HS	SENIOR	1855	1855	0	280	280	0	15.1%	15.1%	0.0%	210	30	31	8	1	
473	LEESVILLE ROAD HS	SENIOR	2397	2397	0	196	196	0	8.2%	8.2%	0.0%	84	60	46	5	1	
324	LONGVIEW	SENIOR	112	112	0	112	112	0	100.0%	100.0%	0.0%	1		8	8	95	
528	MARY E PHILLIPS HS	SENIOR	157	157	0	23	23	0	14.6%	14.6%	0.0%	17	6				
495	MIDDLE CREEK HS	SENIOR	1696	1696	0	227	227	0	13.4%	13.4%	0.0%	120	58	34	12	3	
500	MILLBROOK HS	SENIOR	2370	2370	0	316	316	0	13.3%	13.3%	0.0%	218	38	49	11		
526	PANTHER CREEK HS	SENIOR	2210	2210	0	234	234	0	10.6%	10.6%	0.0%	157	48	26	3		
552	SANDERSON HS	SENIOR	1945	1945	0	288	288	0	14.8%	14.8%	0.0%	153	64	58	10	2	
562	SOUTHEAST RALEIGH HS	SENIOR	1570	1570	0	262	262	0	16.7%	16.7%	0.0%	154	57	43	8		
583	WAKE EARLY COLL OF HEALTH/SCI	SENIOR	204	204	0	10	10	0	4.9%	4.9%	0.0%	10					
588	WAKE FOREST-ROLESVILLE HS	SENIOR	1895	1895	0	225	225	0	11.9%	11.9%	0.0%	145	40	37	3		
595	WAKEFIELD HS	SENIOR	2740	2740	0	307	307	0	11.2%	11.2%	0.0%	202	54	39	10	2	
<b>WCPSS Schools Total</b>			<b>140,758</b>	<b>139,534</b>	<b>1,224</b>	<b>18,395</b>	<b>17,683</b>	<b>712</b>	<b>13.1%</b>	<b>12.7%</b>	<b>58.2%</b>	<b>10,993</b>	<b>4,120</b>	<b>2,171</b>	<b>207</b>	<b>181</b>	<b>11</b>
<b>Special Schools (000)</b>			<b>1,057</b>	<b>43</b>	<b>1,014</b>	<b>589</b>	<b>40</b>	<b>549</b>	<b>55.7%</b>	<b>93.0%</b>	<b>54.1%</b>			39	1		
<b>All Schools Total</b>			<b>141,815</b>	<b>139,577</b>	<b>2,238</b>	<b>18,984</b>	<b>17,723</b>	<b>1,261</b>	<b>13.4%</b>	<b>12.7%</b>	<b>56.3%</b>	<b>10,993</b>	<b>4,120</b>	<b>2,210</b>	<b>208</b>	<b>181</b>	