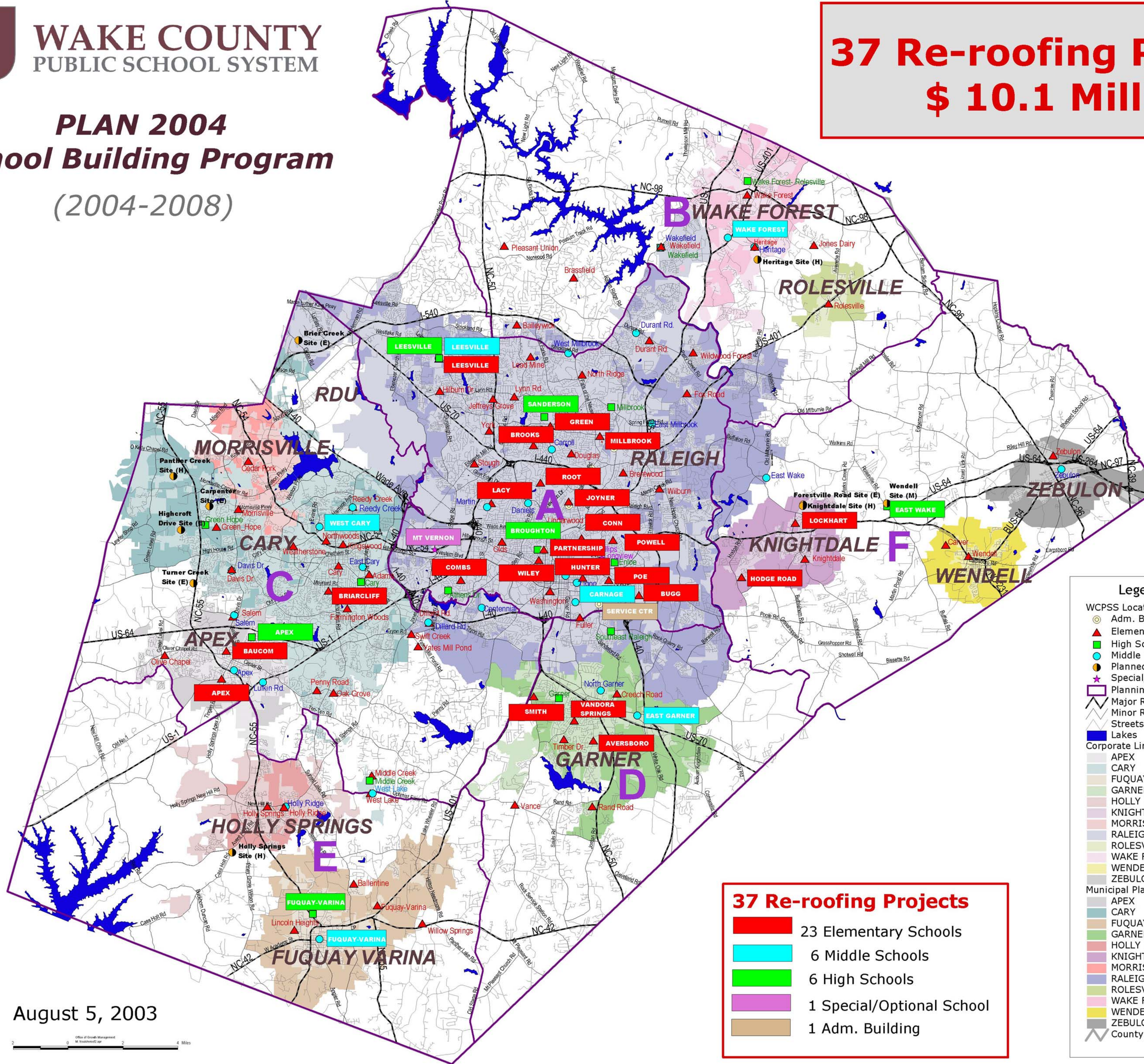




WAKE COUNTY
PUBLIC SCHOOL SYSTEM

PLAN 2004
School Building Program
(2004-2008)

37 Re-roofing Projects
\$ 10.1 Million



37 Re-roofing Projects

- 23 Elementary Schools
- 6 Middle Schools
- 6 High Schools
- 1 Special/Optional School
- 1 Adm. Building

Legend

WCPSS Locations

- Adm. Buildings
- Elementary Schools
- High Schools
- Middle Schools
- Planned Schools
- Special/Optional Schools
- Planning Areas A-F
- Major Roads
- Minor Roads
- Streets
- Lakes

Corporate Limits

- APEX
- CARY
- FUQUAY-VARINA
- GARNER
- HOLLY SPRINGS
- KNIGHTDALE
- MORRISVILLE
- RALEIGH
- ROLESVILLE
- WAKE FOREST
- WENDELL
- ZEBULON

Municipal Planning Area (ETJ)

- APEX
- CARY
- FUQUAY-VARINA
- GARNER
- HOLLY SPRINGS
- KNIGHTDALE
- MORRISVILLE
- RALEIGH
- ROLESVILLE
- WAKE FOREST
- WENDELL
- ZEBULON

County Boundary

August 5, 2003

