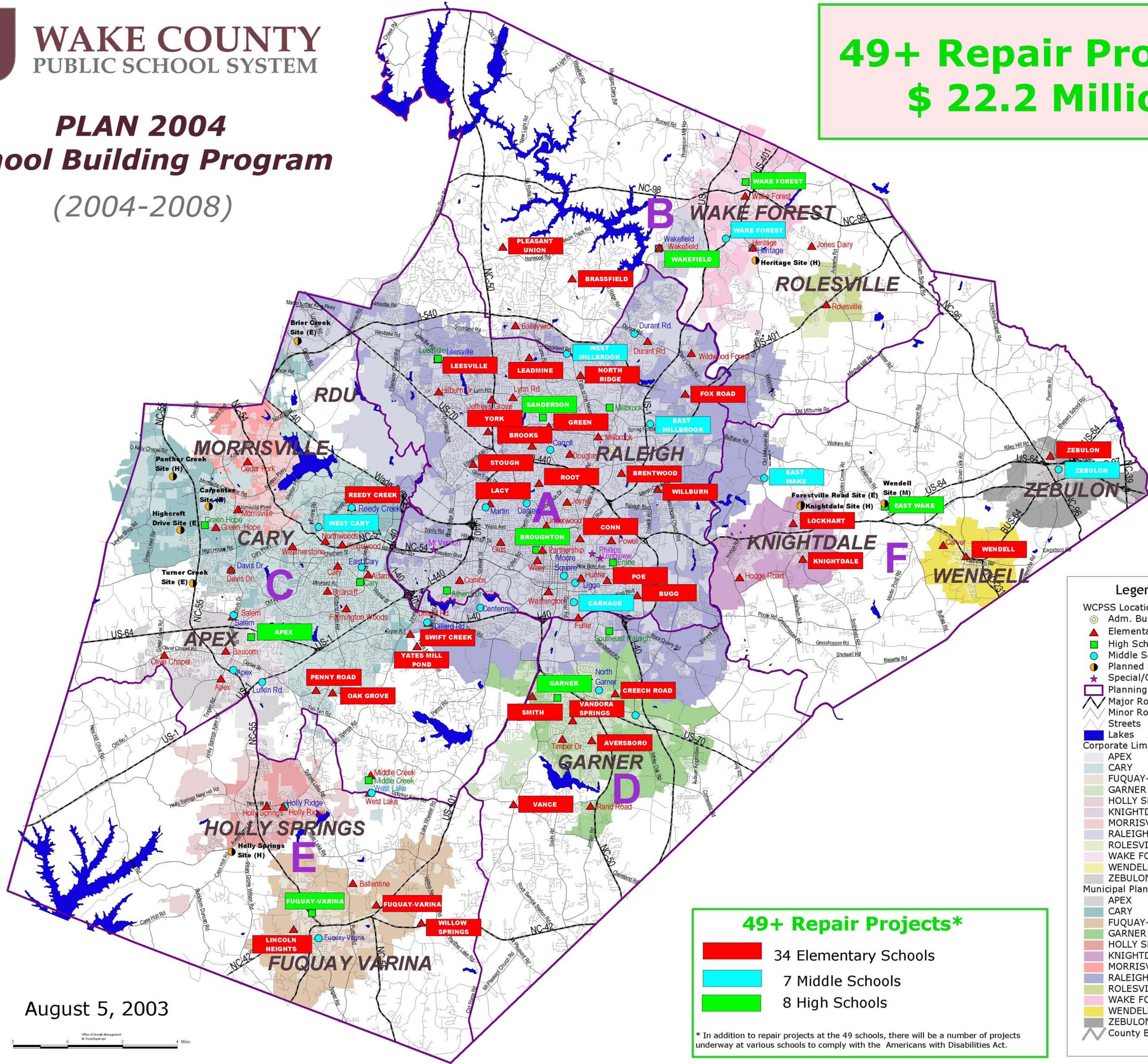




WAKE COUNTY
PUBLIC SCHOOL SYSTEM

PLAN 2004
School Building Program
(2004-2008)

49+ Repair Projects
\$ 22.2 Million



49+ Repair Projects*

- 34 Elementary Schools
- 7 Middle Schools
- 8 High Schools

* In addition to repair projects at the 49 schools, there will be a number of projects underway at various schools to comply with the Americans with Disabilities Act.

Legend

- WCPSS Locations
 - Adm. Buildings
 - ▲ Elementary Schools
 - High Schools
 - Middle Schools
 - Planned Schools
 - ★ Special/Optional Schools
- Planning Areas A-F
 - Planning Areas A-F
- Major Roads
 - Major Roads
 - Minor Roads
 - Streets
- Lakes
 - Lakes
- Corporate Limits
 - APEX
 - CARY
 - FUQUAY-VARINA
 - GARNER
 - HOLLY SPRINGS
 - KNIGHTDALE
 - MORRISVILLE
 - RALEIGH
 - ROLESVILLE
 - WAKE FOREST
 - WENDELL
 - ZEBULON
- Municipal Planning Area (ETJ)
 - APEX
 - CARY
 - FUQUAY-VARINA
 - GARNER
 - HOLLY SPRINGS
 - KNIGHTDALE
 - MORRISVILLE
 - RALEIGH
 - ROLESVILLE
 - WAKE FOREST
 - WENDELL
 - ZEBULON
- County Boundary
 - County Boundary

August 5, 2003

