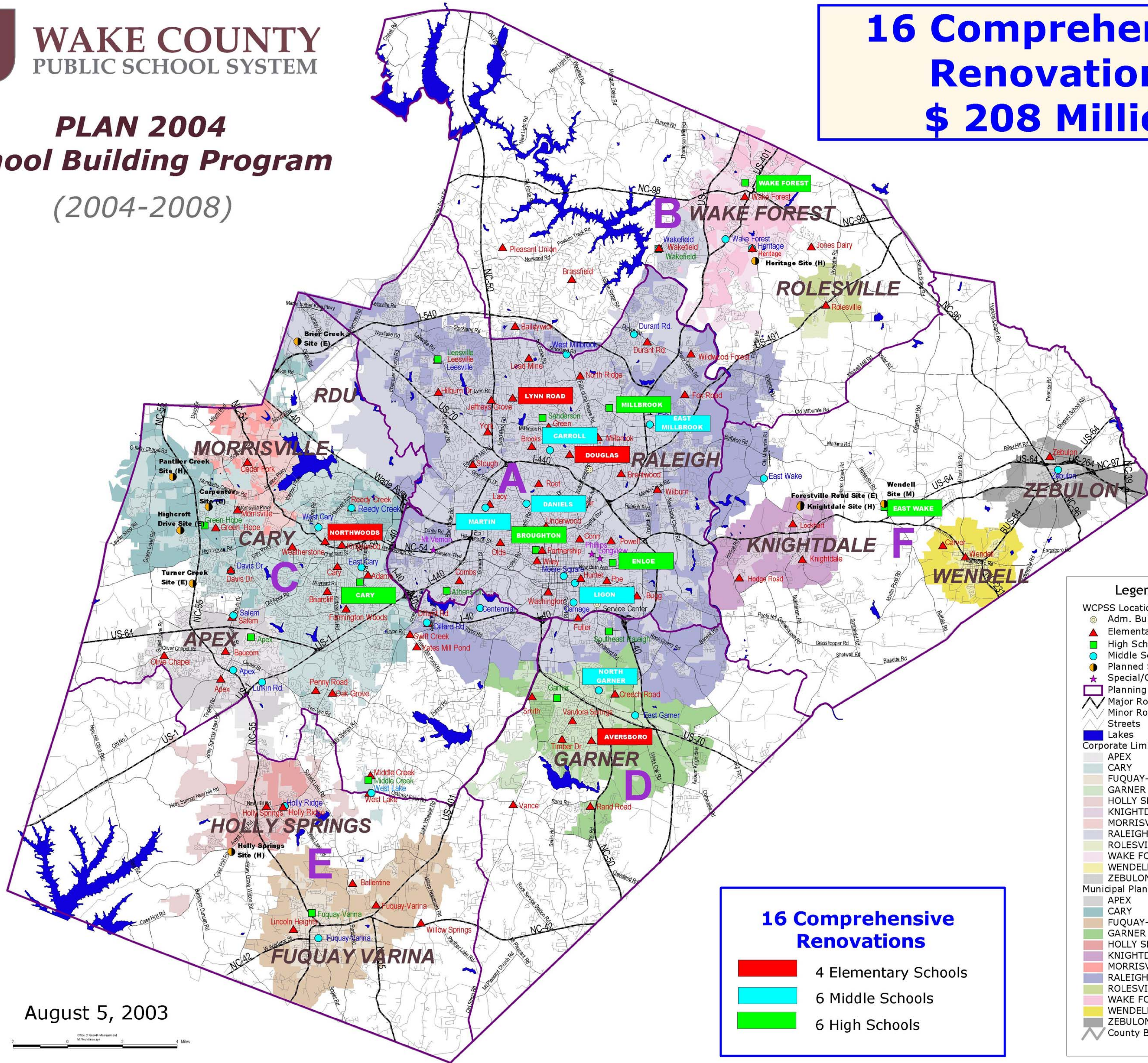




**WAKE COUNTY**  
PUBLIC SCHOOL SYSTEM

**PLAN 2004**  
**School Building Program**  
(2004-2008)

**16 Comprehensive Renovations**  
**\$ 208 Million**



**16 Comprehensive Renovations**

- 4 Elementary Schools
- 6 Middle Schools
- 6 High Schools

**Legend**

WCPS Locations

- Adm. Buildings
- Elementary Schools
- High Schools
- Middle Schools
- Planned Schools
- Special/Optional Schools
- Planning Areas A-F
- Major Roads
- Minor Roads
- Streets
- Lakes

Corporate Limits

- APEX
- CARY
- FUQUAY-VARINA
- GARNER
- HOLLY SPRINGS
- KNIGHTDALE
- MORRISVILLE
- RALEIGH
- ROLESVILLE
- WAKE FOREST
- WENDELL
- ZEBULON

Municipal Planning Area (ETJ)

- APEX
- CARY
- FUQUAY-VARINA
- GARNER
- HOLLY SPRINGS
- KNIGHTDALE
- MORRISVILLE
- RALEIGH
- ROLESVILLE
- WAKE FOREST
- WENDELL
- ZEBULON

County Boundary