



2008-2009 MAGNET PROGRAMS

When I Grow Up...



Montessori

Arts Plus

Technology

Community

International



WAKE COUNTY
PUBLIC SCHOOL SYSTEM
Raleigh, North Carolina

Table of Contents

ARTS PLUS

Creative Arts & Science *p. 4*
 Gifted & Talented *p. 5–6*
 Gifted & Talented AG Basics *p. 7*

COMMUNITY

University Connections & Leadership *p. 8*
 Museums *p. 9–10*
 Leadership *p. 11*
 Early College *p. 12*

INTERNATIONAL

International Studies *p. 13*
 Center for Spanish Language/IB PYP *p. 14*
 International Baccalaureate Programme *p. 15–16*

TECHNOLOGY

Active Learning & Technology *p. 17*
 Center for Leadership & Technology *p. 18*

MONTESSORI

Montessori *p. 19*

INFORMATION

Message from the Superintendent *p. 2*
 Frequently Asked Questions *p. 3*
 Application Process *p. 20–21*
 Selection Process *p. 22*
 Magnet Pathways *p. 23*
 Magnet Objectives/Resource Center *p. 24*
 School Directory *p. 25–26*
 Resource Center Map *Back Cover*

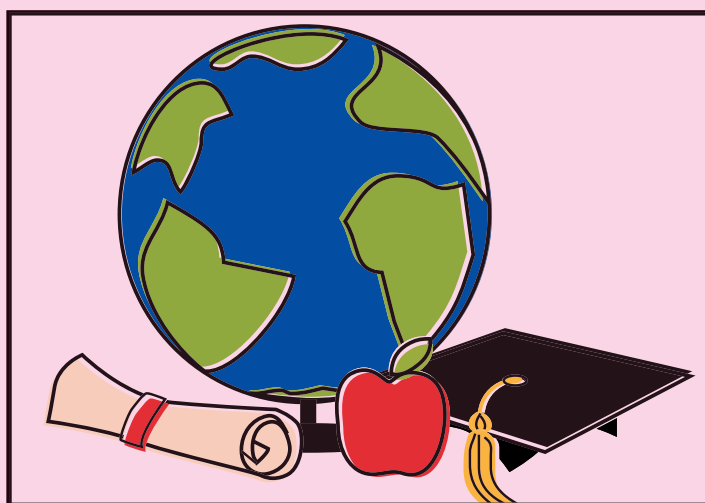
Message from the Superintendent

For twenty-six years, magnet programs have been an effective means of addressing diversity and helping students experience success. Magnet schools provide a variety of teaching approaches and curriculum offerings that help to customize a student's educational program. Additionally, the magnet schools' network has provided a positive climate through which other critical issues have been addressed — educational choice and effective use of space.

This publication is designed to provide information about educational choices you have through the magnet network in Wake County. We appreciate your interest in magnet programs and encourage you to call the **Magnet Resource Center, 919.501.7900** if you need further information or assistance.



Dr. Del Burns



Why Choose a Magnet School?

Q: *What is a Magnet School?*

A: Magnet schools are public schools operating within the Wake County Public School System. A magnet school serves as a vehicle to promote diverse student populations and optimize use of facilities using unique programs to attract families. They follow the North Carolina Standard Course of Study and offer enhancements to the curriculum based on a theme or an approach to learning.

Q: *Why should my family consider a Magnet School?*

A: Does your child enjoy music or dance? Do you want your child to speak a foreign language? Is your child intrigued by science or math? Would your child learn best in an innovative academic environment? Magnet schools offer students opportunities for exploration and in-depth study in these and many more areas.

Q: *Does my child need to pass a special test or be recommended for a Magnet Program?*

A: NO! There are no special performance standards or test scores required for admission into a magnet program (admission into the AG Basics Program is the exception). Any student enrolled/registered in the Wake County Public School System is eligible for admission into one of the magnet programs.

Q: *How do I enroll in a Magnet School?*

A: Students may submit an application during the February acceptance period. On-time applications must be time-stamped during this acceptance period. Students are chosen from an applicant pool by computer, using a random number selection process.

Q: *How do I know which Magnet Program is suited for my child?*

A: Read the descriptions of all the K–12 Magnet Programs provided in this brochure or visit the Magnet Program website at www.wcpss.net/magnet. Call the Magnet Resource Center at 919.501.7900 for a schedule of magnet school open houses and information sessions. We also encourage you to visit the Magnet Resource Center Monday–Friday 9:00 a.m.–4:00 p.m.

Q: *How do I know which Magnet Schools or Programs are available to me?*

A: Visit www.wcpss.net/magnet and select the link "determine school by student address." Enter your home address to see your base, calendar and magnet option schools.

Q: *What if I am interested in applying for a school on a year-round calendar?*

A: Families whose base school is on a traditional calendar may apply for an identified school on a year-round calendar. You may visit www.wcpss.net/magnet and select "determine school by student address" to see the entire list of your magnet and calendar option schools.

CREATIVE ARTS & SCIENCE

Unique Features

- *Daily instruction enhanced by visual and creative arts*
- *Discovery-based science with a science specialist*
- *Instruction based on Howard Gardner’s Theory of Multiple Intelligences*

The Creative Arts & Science Program taps into children’s variety of learning styles. The arts teachers (music, dance, art, drama) and classroom teachers work together to weave arts into all academic subjects. Throughout the year students participate in “informances” (informal performances) to artistically demonstrate what they have learned.

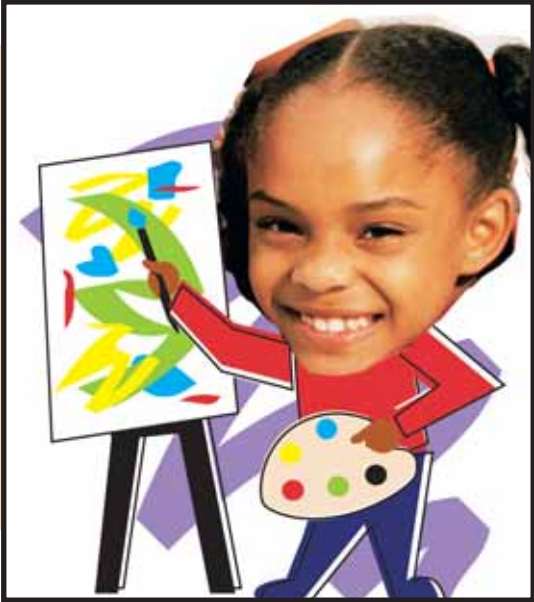
Another outstanding feature of the Creative Arts & Science Program is its emphasis on science. Students will experience hands-on, discovery-based science with a science specialist.

My daughter is greatly benefiting from the wide range of both academic and elective courses which allow her to explore her creative side while challenging her academically. —Karen

Elementary
*Bugg
Douglas*

Middle
*East Millbrook
(also under
International
Baccalaureate)*

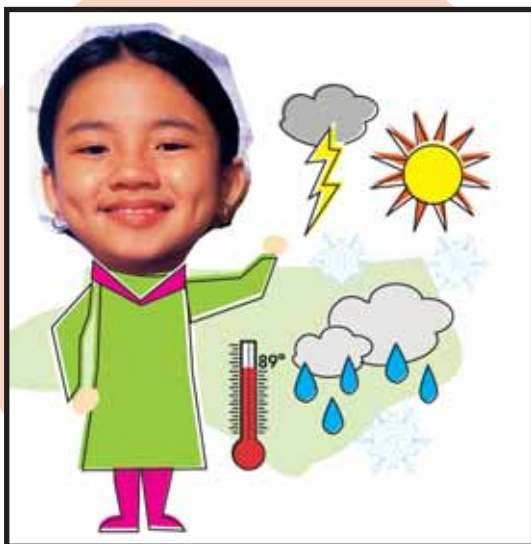
When I grow up... I want to be an Artist and Design Movie Sets...



PROGRAM PATHWAY (see p. 23 for full chart)



When I grow up... I want to be a Meteorologist...



The **Gifted & Talented Program** is based on the belief that every child has gifts and talents to be valued and nurtured. The child, teacher and parent all work together to choose courses and customize the ideal educational program. Children will explore a wide variety of learning experiences through core and elective courses that develop individual strengths and interests. Students who are academically gifted or learning disabled, or who have other unique needs, work with specialized teachers as part of their elective classes.

There are no tests, auditions or performance standards for acceptance into the Gifted & Talented Program.

Kindergarten through second grade students spend the majority of their day receiving basic instruction in language arts, math, science and social studies. The remainder of the day is dedicated to electives. Students will select from six to eight electives each year covering all curricular areas. Among the K–2 elective offerings are: Kitchen Chemistry, New Wings to Rocket Boosters, Beginning Spanish, Creative Dance and Theatre Games.

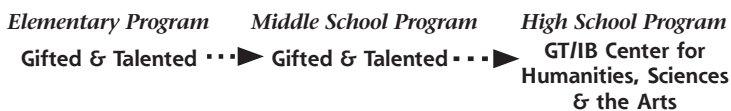
Third through fifth grade students will take as many as 12 electives each year. Architectural Design, Theatre Production, Continuing Spanish and Gymnastics are just a few examples.

Students with outstanding strengths in one or more areas may take AG selected elective courses. These courses extend beyond traditional curriculum areas such as reading and math to include areas such as art, music, dance, drama, science, social studies, foreign language and instructional technology.

The Gifted & Talented Program for middle school students is divided into two components: core curriculum and electives. Students spend four periods each day in the core areas of language arts, mathematics, science and social studies. The remainder of the day is spent in electives, exploring new areas of interest or studying a particular topic in-depth. Students select from an expansive menu of elective courses such as Advanced Ballet or Tap, The Stock Market, Shakespeare’s Theatre, Environmental Ecology, and Satellites, Computers and Mapping.

The GT program unleashed a passion in our son that we would have never imagined. It opened doors for him to pursue his musical talent and love of technology at the college that was truly awestruck by the experience and knowledge he brought with him as a freshman to their school of sound. —Gwen

PROGRAM PATHWAY (see p. 23 for full chart)



GT/IB CENTER FOR HUMANITIES, SCIENCES & THE ARTS

GT/IB Center for Humanities, Sciences & the Arts

Unique Features

- *Variety of electives and course levels for exploration of interests, acceleration and a rich, in-depth study of the subject*
- *Foreign language offered elementary through high school*
- *Opportunities for in-depth visual and performing arts studies*
- *Extensive AP course offerings in high school*

The GT/IB Center for Humanities, Sciences and the Arts high school program invites in-depth study across disciplines and encourages problem solving and high-level thinking. The school community works together to create a supportive, intellectually stimulating environment that nurtures and promotes academic success. The program prepares graduates who embrace lifelong learning, productive careers and responsible citizenship in an ever-changing global society.

The instructional day consists of eight periods and offers two-period blocked classes for concentrated study in areas such as mathematics, science, humanities, visual and performing arts, broadcasting, and career and technical education. Honors, IB and Advanced Placement courses are offered in various subjects. Students enhance their academic education with elective courses such as nine foreign languages, literary and writing courses, advanced computer science, audio and television production and extensive work in the visual and performing arts.

Elementary

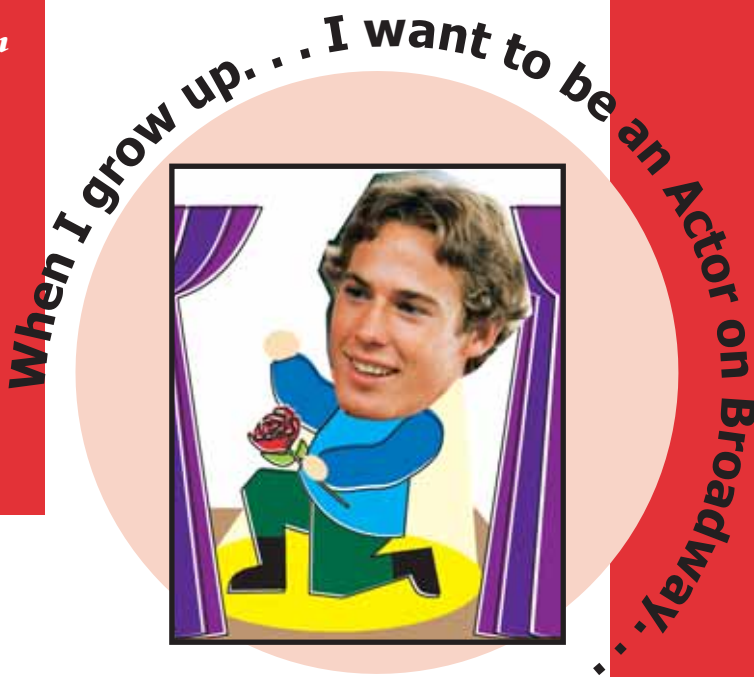
Fuller *Washington*
Hunter *Wendell*
Powell *Zebulon*
Underwood

Middle

Carnage *Martin*
Ligon *Zebulon*

High

Enloe



When I grow up... I want to be a Rocket Scientist and Build Space Shuttles...



The Academically Gifted (AG) Basics Program is offered in conjunction with the Gifted & Talented Program at four magnet schools. (Refer to the following page for a description of the Gifted & Talented Program.) While all students identified as Academically Gifted will receive differentiated services in all Wake County schools, students in the AG Basics Program are grouped with other AG identified students for core subjects according to their individual qualifications. This program is offered to elementary and middle school students. Enloe Magnet High School provides a continuation of this program through advanced courses and electives.

Academically gifted students at these schools are also served through the Gifted & Talented Program. They may select electives taught by educators certified in gifted education. Students participating in the AG Basics Program must qualify for Differentiated Services in Gifted Education.

GIFTED & TALENTED AG BASICS

Unique Features

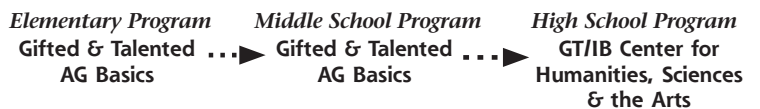
- Qualified academically gifted students are grouped together for core subjects according to their areas of AG identification
- Participation in the Gifted & Talented Program

My son was identified early as academically above many of his peers, requiring a curriculum that kept him challenged, motivated and constantly learning. The GT courses gave him the building blocks to be a success in the AG Basics program at middle school. —Karen

Elementary
Fuller
Hunter

Middle
Carnage
Ligon

PROGRAM PATHWAY (see p. 23 for full chart)



UNIVERSITY CONNECTIONS & LEADERSHIP

Unique Features

- Located on the North Carolina State University campus
- Instruction enhanced by support from NCSU's ten colleges
- Instruction is supported through the connecting Friday Institute

The University Connections & Leadership Program strengthens both teaching and learning. Through a partnership with North Carolina State University, students, teachers and parents frequently engage with faculty, students and the facilities at NCSU as well as its corporate and government partners on Centennial Campus. University members share their expertise through campus-based learning experiences, lectures, demonstrations, job shadowing and internships.

The middle school, located on North Carolina State University's Centennial Campus, is connected to the William and Ida Friday Institute for Educational Innovation. Students will utilize the facility as part of collaborative projects with the College of Education.

University Connections & Leadership students use critical thinking to address real world problems, and are encouraged to take initiative and assume leadership roles within the school and community.

They have had several opportunities to interact with college level professors and students on a wide variety of projects and programs including working with the Friday Institute. —Rhonda and Bryan

Middle

*Centennial Campus
(also under Leadership)*

*The University
Connections &
Leadership middle
school operates on a
modified calendar.*

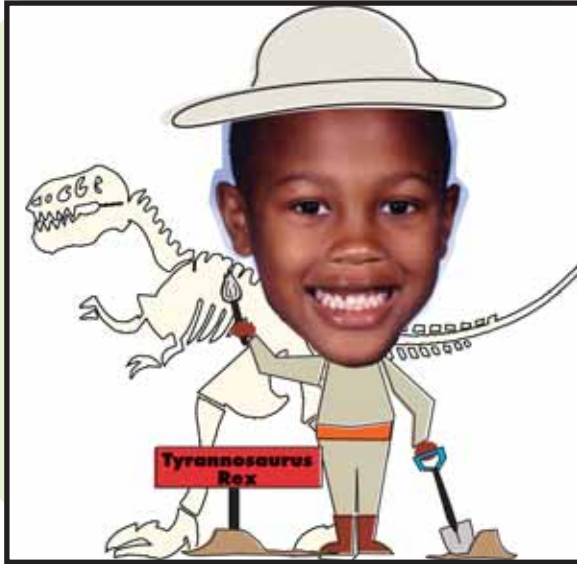


PROGRAM PATHWAY (see p. 23 for full chart)



MUSEUMS

When I grow up... I want to be a Paleontologist...



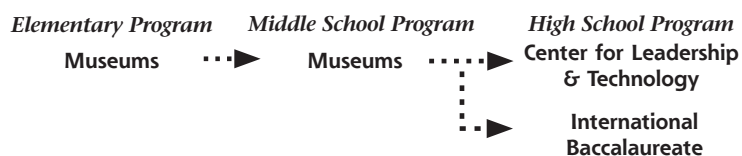
Unique Features

- Collaboration and interaction with area museums, professionals and experts
- Project-based approach to learning
- Student seminars are conducted throughout the curriculum
- At the elementary level, grade-level museum field experiences are part of basic instruction
- Students participate in discovery-based exploratory classes at the middle school level

The **Museums Program** is founded on the principle that children learn naturally in environments that support guided exploration and discovery, encourage meaningful projects, and foster interaction among peers and mentors. Schools work with museums to introduce students to the stimulating world of museum environments and the wealth of their culture, history, sciences and arts. Students learn through interaction with local exhibits and performances. They also create exhibits throughout the school to share their learning. The school is transformed into a dynamic museum where students, staff and parents explore, learn and reflect.

The Paideia methods of teaching support the museum approach to learning. *Paideia* means *nurturing children*, and the goal of Paideia is to nurture students' active learning abilities. The classroom combines three instructional techniques: didactic instruction, coaching of academic skills and Paideia seminar discussion. Together, these three types of instruction have been proven to enhance the literacy, problem solving and thinking skills of all students.

PROGRAM PATHWAY (see p. 23 for full chart)



The Museums Program in elementary school allows students to become architects of their own learning. The discovery curriculum, grounded in the standard course of study, encourages and utilizes students' natural curiosity. The Museums Program creates a learning environment that engages students, stimulates understanding and encourages them to take responsibility for their own learning. The school environment is transformed into a learning sanctuary. Teachers act as facilitators rather than lecturers; the hallways are colorful passageways to learning; the media center is an interactive hub for research; the specials (music, physical education, art and media) are integrated; and study-guided trips to local museums allow students to view original artifacts.

The Museums Program for middle school students is an interactive learning environment that extends beyond the walls of the classroom to the museums, the community and the world. The school has a dynamic partnership with area museums. This unique learning environment allows students to use the museums' collections and exhibitions as a springboard for exploration and engaged study in all areas of students' curricula. Student experiences include meaningful work behind the scenes with museum staff, technicians, archivists, researchers and other experts. Educational outreach also extends to parents and members of the community. Students who are identified as Academically Gifted or advanced in a particular area have the opportunity to participate in high-level discovery courses designed to meet their learning needs and interests.

My two sons, as equally different as they are the same, benefit tremendously here because...the teachers allow kids to make choices in their learning. A school that relies on the children's sense of wonder and insight will perpetuate continued excellence.

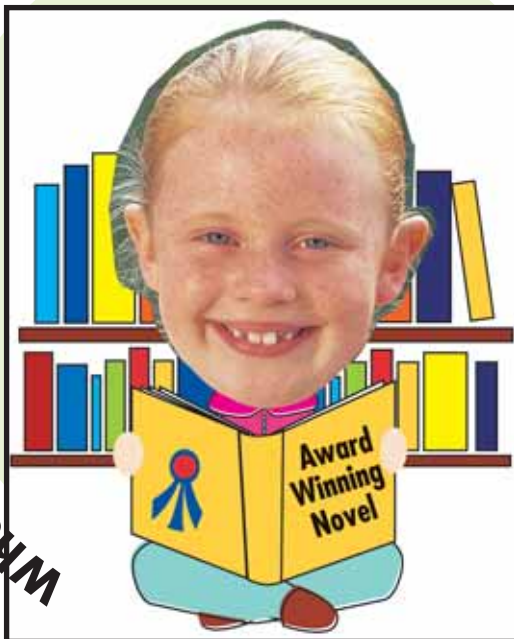
—Andrea and Martin

Elementary
Brooks

Middle
Moore Square

The Museums middle school operates on a modified calendar.

When I grow up... I want to be a Prize-Winning Author...



When I grow up... I want to be an Educator...



LEADERSHIP

Unique Features

- Focused on the development of leadership skills along with personal and academic goal setting
- Emphasis on character education based on Stephen Covey's principles
- Student-led projects developing communication and presentation skills
- Encourages individual initiative and responsibility
- Participation in service learning opportunities

The Leadership Model Program has received national recognition for its emphasis on developing leadership in children. It is grounded in the belief that building cooperative relationships and nurturing responsibility, kindness and good judgment is the basis for creating a successful community of learners. The principles of Dr. Stephen R. Covey, internationally renowned consultant and author of *The 7 Habits of Highly Effective People* and *First Things First*, are embedded in the school's culture, and guide the students, faculty and staff in building the leadership model.

By developing the whole child — socially, emotionally, academically and ethically — the program fosters a climate of personal and principle-centered leadership. Leadership opportunities might include hosting school events or internships at the middle and high school level. Students in the program set their own personal and academic goals, collect and analyze data, track their progress and share this information with parents at student-led conferences.

Elementary
Combs

Middle
*Centennial Campus
(also under University
Connections & Leadership)*

High
*Southeast Raleigh
(also under Leadership
and Technology)*

*The Leadership middle
and high schools operate
on a modified calendar.*

The leadership model and Stephen Covey Habits are essential to the business world. To have our children immersed with these principles as they start their education is priceless! —Combs parent

PROGRAM PATHWAY (see p. 23 for full chart)



EARLY COLLEGE

Early College

Unique Features

- *Located on Wake Technical Community College's Health Sciences Campus*
- *Course offerings are focused around the theme of health and science careers*
- *Small school setting and a personalized learning experience*
- *Students simultaneously fulfill the requirements for a high school diploma and a two-year associate degree with Wake Tech Community College*

A first of its kind in the nation, **Wake Early College of Health and Sciences** takes high school education to the next level. At WECHS, students earn their high school diploma while acquiring up to sixty free transferable college credits and an associate degree from Wake Technical Community College.

In partnership with **Wake Technical Community College (Wake Tech)** and **WakeMed Health & Hospitals**, WECHS offers students a unique educational experience in real-life laboratory environments. Students attend classes on Wake Tech's Health Sciences Campus adjacent to WakeMed, and have the opportunity to participate in job shadowing and internships in the health and science fields.

The school's small setting of 400 or fewer students allows for the personal advising and continued support necessary to make important connections between academic experience and career interests. WECHS also follows the Wake Tech academic calendar, so students have the advantage of taking courses during the summer session to accelerate their studies.

NOTE: Open only to siblings and rising 9th graders who have submitted a completed application packet. Applications will be available in early January and must be submitted to the Magnet Resource Center by the date listed on the packet.

This school has a real sense of community, small class size, fantastic teachers, students taking college classes, mentoring and volunteer programs, afterschool clubs and much more. —Maureen

High

Wake Early College of Health and Sciences

The WECHS follows the Wake Tech Academic Calendar.



When I grow up. . . I want to be an Interpreter for the United Nations. . .



INTERNATIONAL STUDIES

Unique Features

- Intensive foreign language instruction in five different languages
- Integration of international themes and concepts throughout curriculum
- Elective choices in all curriculum areas

The **International Studies Program** is designed to develop understanding of major systems (technology, communications and cultural) that influence the condition of our world. This program attracts students from many different countries. These face-to-face experiences with other cultures make global studies come alive.

International Studies students receive a solid core of instruction in essential subjects, and an array of elective courses that give students varied learning options and experiences.

Kindergarten through second grade students may participate in as many as eight elective courses per year. Students in grades 3–5 may take 12 elective classes each year. As one of their elective courses, students may choose from five foreign languages:

- French
- Spanish
- German
- Japanese
- Chinese

Technology and communications electives are also offered, including advanced computer, photography and video classes. Children will learn how to develop and print black-and-white film, use video equipment in the production of an in-house television news program, and use computers to communicate with others around the world.

Elementary
Wiley

It is a wonderful experience for the future leaders of our country. —Michelle

PROGRAM PATHWAY (see p. 23 for full chart)

Elementary Program Middle School Program High School Program
International Studies •••▶ Gifted & Talented •••▶ GT/IB Center for
Humanities, Sciences
& the Arts

CENTER FOR SPANISH LANGUAGE/IB PYP

Unique Features

- Daily Spanish instruction for all students in grades kindergarten through fifth grade with most students conversational by the end of fifth grade
- Development of cultural understanding through art, music and dance
- Offers the International Baccalaureate Primary Years Programme

Elementary

Joyner (also under International Baccalaureate)

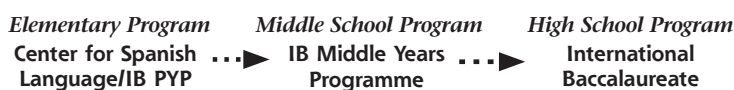
I have always felt that my children had an advantage with the type of education they were receiving through the magnet program.
—Becky



The Center for Spanish Language/IB PYP develops the whole child in a nurturing and challenging environment in which students use structured inquiry as a vehicle for learning. The program fosters critical and compassionate thinkers, lifelong learners and informed participants in local and world affairs. Students create an understanding of their place in the world through community involvement, collaboration and the utilization of technology to connect classroom experiences to real-world applications.

The Center for Spanish Language/IB PYP offers the most extensive Spanish language program offered to elementary students in the Wake County Public School System. All students receive literacy and communication instruction in Spanish as they learn to express themselves in two languages (English and Spanish). This instruction enables students to interact comfortably with each other in both languages while inside and/or outside the classroom.

PROGRAM PATHWAY (see p. 23 for full chart)



International Baccalaureate Programme

When I grow up... I want to be an International Lawyer...



AIMS of IB

- Maintain high academic standards common to schools worldwide
- Promote international understanding and a respect for a variety of cultures
- Foster critical and compassionate thinking
- Open the window between the classroom and the outside world through community service
- Allow students to develop individual talents
- Facilitate university entrance around the world

INTERNATIONAL BACCALAUREATE PROGRAMME

Unique Features

- *Emphasizes community service to promote international understanding and responsible citizenship*
- *Begins study of foreign language or second language in kindergarten*
- *Opportunity to receive the International Baccalaureate Diploma (HS)*

Primary Years Programme (PYP)

The **Primary Years Programme** seeks to develop the whole child, not only in the classroom but also in the world outside, in other environments where children learn. It offers a framework that meets children's varied needs: academic, social, physical, emotional and cultural. Students work to answer questions such as: Who are we? Where are we in place and time? How do we express ourselves? How does the world work? How do we organize ourselves? How can we share the planet?

The PYP in grades K–5 serves as an excellent introduction to the Middle Years Programme (MYP), but it is not a prerequisite for this or the Diploma Programme (DP).

PROGRAM PATHWAY (see p. 23 for full chart)



Middle Years Programme (MYP)

The Middle Years Programme includes students in **grades six through ten** and incorporates the following five areas of interaction into the core courses taught:

- Approaches to Learning
- Environment
- Community and Service
- Homo Faber (man the maker)
- Health and Social Education

The MYP is a thorough study of eight disciplines. Courses are presented in ways that allow students to see how they are connected to each other and the world. Teachers ask "Essential Questions" that guide students in finding more than one right answer. During the fifth year of the MYP (tenth grade), students complete a personal project that demonstrates initiative, organization and creativity.

Diploma Programme

Students in the **eleventh and twelfth grades** can choose the International Baccalaureate Diploma Programme. Beyond intellectual rigor, strong emphasis is placed on the ideals of international understanding, responsible citizenship and service. The IB students become critical and compassionate thinkers, lifelong learners and informed participants on local and world affairs, respecting the variety of cultures and attitudes that make for richness of life. Students can choose to participate in the Diploma Programme and earn an International Baccalaureate Diploma that is recognized by major universities worldwide.

While the extra classes...broaden her academic education, there has been so much more. She has learned to work with people of different races, religions, social and economic backgrounds. She has learned to judge people by their behavior...she has learned to look beyond the initial impressions. I think public schools teach more than the academics and the magnet programs teach those lessons best. —Susan and Scott

Elementary

*Farmington Woods
Millbrook
Joyner (also under Center
for Spanish Language)*

Middle

*Daniels
East Garner
East Millbrook (also under
Creative Arts)*

High

*Broughton
Garner*

When I grow up... I want to be an Ambassador...



ACTIVE LEARNING & TECHNOLOGY

When I grow up... I want to be an Architect.



Unique Features

- Active project-based learning modules
- Technology as a tool for learning
- Study includes five focus areas — Visual Art, Dance, Drama, Music and Physical Education
- Emphasis on effective communication skills including Spanish as a second language

The Active Learning & Technology Program engages students in hands-on, project-based activities that maximize their level of performance both in school and the community. Through daily project-based modules, experience using vari-

ous types of technology, and the continual practice of effective communication, students are better prepared for the future.

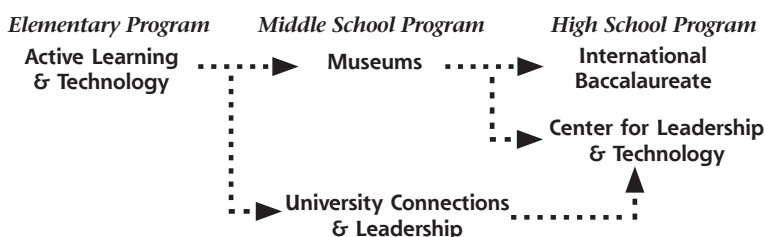
Active learning occurs throughout the day, integrating traditional core subjects, the arts and technology. Project-based learning modules enhance hands-on investigation, inquiry learning and research and presentation skills. Every module provides students with the opportunity to interact with an expert from the local community, either at school or as part of a classroom excursion. Students also participate in a variety of projects through community outreach and interaction, including sharing the arts within the community.

Active Learning and Technology students learn to effectively communicate ideas through focus and direct instruction in the art of listening, speaking, writing, presenting and collaborating. Beginning in kindergarten, students learn Spanish to better communicate within their local and national communities and to develop an early appreciation of other cultures.

The magnet program has allowed my three children to really explore their talents for drama, art, dance and music within their regular school day and helped them make connections between their basic school studies and their creative abilities. —Debra

**Elementary
Conn**

PROGRAM PATHWAY (see p. 23 for full chart)



CENTER FOR LEADERSHIP & TECHNOLOGY

Unique Features

- *Structured leadership program based on Stephen Covey's principles*
- *Seven Career Focused Learning Communities (CFLCs)*
- *Emerging technologies integrated throughout curriculum*
- *Daily academic coaching*
- *Technology that promotes anytime and everywhere learning*

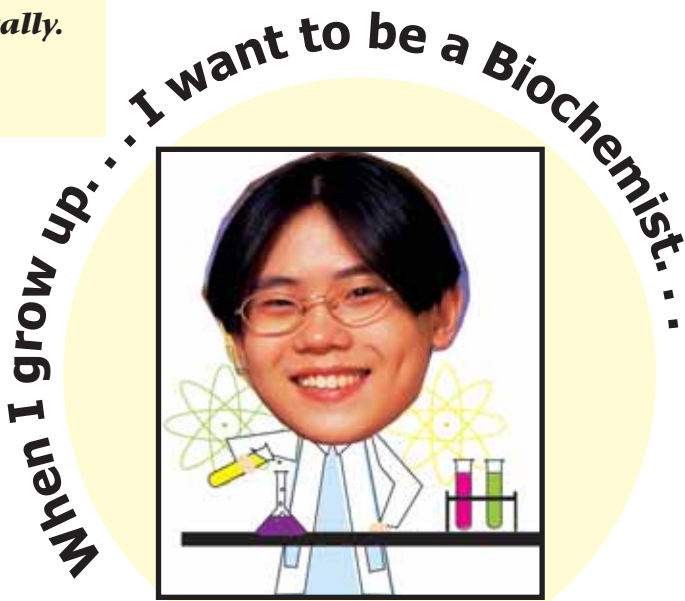
The Center for Leadership & Technology Program is creating tomorrow's leaders today by developing in students a strong sense of citizenship and service through the application of technology for work, learning and leisure. Students in the program are prepared for multi-option career paths by using the latest technology for anytime and everywhere learning.

While there is a focus on leadership and technology, students are able to select from a challenging array of 90-minute classes from across all disciplines. Students plan a program of study with the assistance of Academic Coaches who meet with them daily. Seven Career-Focused Learning Communities (CFLCs) provide students with the opportunity to focus on their specific career interest while working with other students and faculty who share the same interest. These communities of learners reflect the top employment fields for the coming decade: medicine/biotechnology, information technology, engineering, digital arts, law and human service, global leadership and connections, and education. The program prepares students to be effective leaders in their local, national and international communities.

It was the best move we could have made both socially and academically.
—Stacie

High

*Southeast Raleigh
The Leadership high school operates on a modified calendar.*



When I grow up... I want to be a Detective...



MONTESSORI

Unique Features

- *Self-directed learning using innovative, hands-on materials*
- *Multi-age setting*
- *All teachers trained in the Montessori Method*

Instructional methods of the **Montessori Program** are grounded in the teaching philosophies of Dr. Maria Montessori. The philosophy states that children have an innate curiosity and a need to learn, and they will

self-educate if allowed to do so naturally according to their developmental levels. The Montessori classroom captures the curiosity of the child and builds upon it. Children learn at their own pace based on their individual interests and developmental levels.

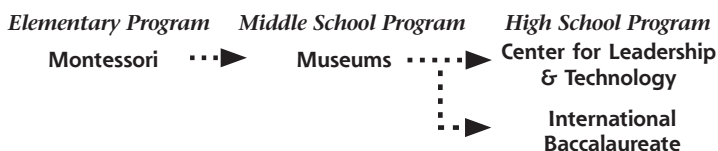
Montessori students develop a positive attitude about learning, along with a positive self-image and a strong sense of independence and responsibility. They work in a multi-age setting that promotes respect, sharing and the reinforcing of knowledge between older and younger students.

The Montessori Program includes pre-kindergarten through the fifth grade. Classes are directed by Montessori-trained teachers and are limited in size to ensure individual attention. Parents who apply for the program should understand that they are making a commitment to a total preschool through elementary Montessori Program.

Elementary
Poe

The teaching methods build self-confidence... combining grade levels is particularly beneficial, allowing our child to progress to more challenging work more quickly. —Jon and Amanda

PROGRAM PATHWAY (see p. 23 for full chart)



Fee Information: There is an annual tuition fee for the preschool. Please call 919.250.4777 for tuition prices.

Any student registered in the Wake County Public School System is eligible to apply for a magnet program. There are no special performance standards or test scores required for admission. (Admission to the AG Basics middle school program is the exception – please refer to the GT/AG Basics description.)

Magnet Program Application Process

To Apply to a Magnet School:

- Register students new to Wake County Schools prior to submitting an application to a magnet school. Kindergarten registration begins on **the first Thursday in February**. Contact your base school for registration information.
- Read the enclosed information, visit the magnet website (www.wcpss.net/magnet), visit the Magnet Resource Center located on the campus of Millbrook Magnet Elementary School and attend recruitment events to explore all of your magnet options.
- Identify the magnet schools that serve your home address by visiting www.wcpss.net/magnet and selecting “Determine School by Student Address.”
- Complete an electronic application and submit it online during the on-time application period.
- To be considered on time, an application must be time-stamped **anytime** within the acceptance period.
- Electronic applications will be available online only during the on-time acceptance period. No late applications will be accepted.
- Students in fifth and eighth grades who attend a magnet school **MUST** apply to continue in a magnet middle or magnet high school. Greater priority is given to students who apply to follow their program pathway at the next level.

If Your Child is Accepted:

You will be notified of selection (or non-selection) in mid-March. Acceptance of the offer becomes the official school assignment for the 2008–2009 school year.

Criteria for Selections:

Applications are chosen through a random number selection process using the criteria below:

- On-time application time-stamped **any time** within the application period
- Transportation patterns
- School capacity
- Classroom capacity
- Diversity
- Siblings
- Present magnet status of applicant

Not Considered:

- How early the application arrives within the acceptance period
- Hand-delivered applications
- Faxed or incomplete applications
- Additional information or extenuating circumstances
- Requests for specific schools (*Applications are for programs. School assignment is based on the home address.*)

Please Note:

The dates in the brochure apply to the current 2008–2009 school year. Magnet applications for the 2008–2009 school year must be time-stamped between the dates of the application period. To find out application period dates, visit wcpss.net/magnet. Magnet assignments will be completed in mid-March. Kindergarten registration begins the first Thursday in February.

Selection Process

All valid applicants are guaranteed an opportunity to be selected in the magnet selection process. Students are chosen from the applicant pool by computer, using a random number selection process. No late applications will be accepted. When siblings are applicants, the oldest sibling is considered first. If all siblings who apply cannot be selected, none are selected.

Factors in the selection process include:

- **Transportation Pattern:** Students who do not live in the transportation pattern are considered only if vacancies remain after all applicants within the transportation pattern have been considered. If selected, students living outside the transportation pattern must provide their own transportation.
- **Crowding:** Crowding is computed by comparing the previous year's enrollment to the adjusted building capacity. While many schools are crowded, schools listed in the "crowding formula" had an enrollment of at least 100% of adjusted building capacity.
- **Diversity:** Free/reduced priced lunch percentages are computed for a node (defined geographic area) or a school based on the number of elementary students who qualify in that node. A percentage is determined for both the node and the school. Students scoring below grade level for a school are computed based on the reading scores of students tested for that school and averaged over a two-year period. As with free/reduced priced lunch, a percentage is determined for both the node and the school.

Magnet students who are selected for the magnet selection process can remain in the program until the end of that grade configuration (K–5, 6–8, 9–12). Students in fifth and eighth grades who attend a magnet school **MUST** apply in order to continue in a magnet middle or magnet high school.

Selection Criteria — Elementary Magnet

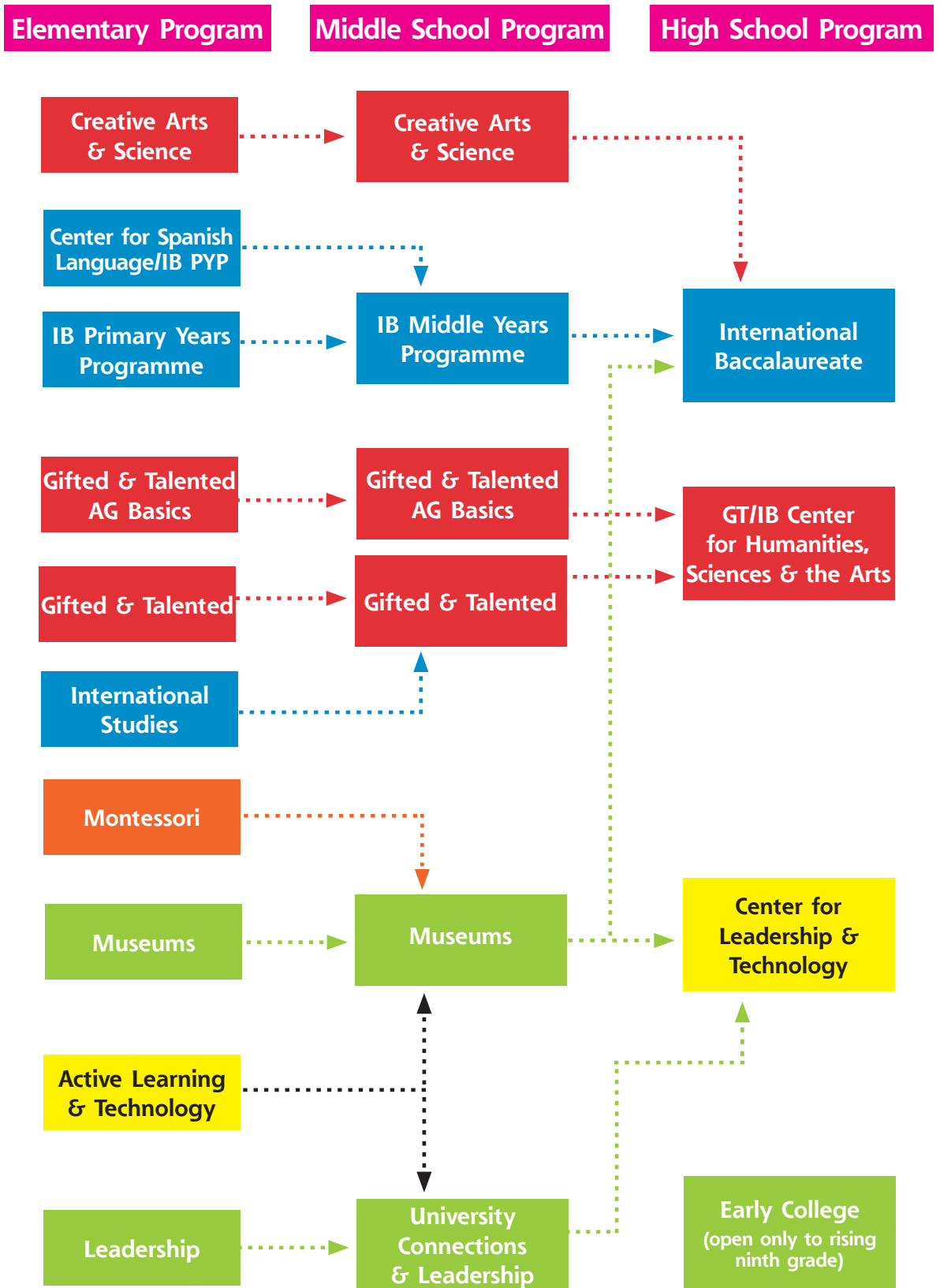
Siblings of present magnet students identified on the intent form will be given first priority. After assigning the students who meet this criterion, the school will determine the number of vacancies available.

Selection Criteria — Secondary Magnet

The selection process for secondary schools is the same as elementary with the addition of the second priority, which states that students who currently attend a magnet school as a magnet or base student have a priority to attend a magnet school in the next grade configuration (6–8, 9–12). Priority is given in the selection process to elementary and middle school students in a magnet school who apply to follow their program pathway at the next level.

Magnet Pathways

Students attending a magnet school have a priority in the selection process when applying to a magnet school of the next grade configuration (K–5, 6–8, 9–12.) A student may submit an application to attend any Magnet School; however, to increase the chances of being selected for the next level magnet program, students should follow their program pathway as identified on the following chart.



Magnet Objectives

Magnet Programs will be used to create Healthy Schools throughout the Wake County Public School System by using choice to help:

- Reduce high concentrations of poverty and support diverse populations
- Maximize use of school facilities
- Provide expanded educational opportunities

Function of Magnet Schools

Magnet schools began in the Wake County Public School System in 1982 to serve two main purposes — to promote voluntary school integration and to fill under-utilized schools located mostly in downtown Raleigh. Magnet schools, located in low-growth areas, use parental interest in innovative programming along with the desire for public school choice to engage the community in exploring the network of magnet programs. Today, a magnet school still serves as a vehicle to promote diverse student populations and optimize use of facilities using unique programs to attract families.

Magnet Resource Center

The Magnet Resource Center is located at 1600 E. Millbrook Road on Millbrook Elementary’s Campus. The center is a place for parents/guardians, students and the community to learn about the Wake County Public School System Magnet Programs. The Magnet Resource Center is open to the public Monday–Friday from 9:00 a.m.–4:00 p.m., with staff available to answer questions and offer information about the magnet schools. At the center you will find articles, brochures, newsletters, videos, student work and other materials specific to each magnet school. From September through February, monthly magnet information sessions are offered at the Center for families interested in learning more about the various magnet programs. For more information, contact **919.501.7900** or email **magnetcenter@wcpss.net**.

**Magnet Resource Center
1600 East Millbrook Road
Raleigh, North Carolina 27609
919.501.7900**

Monday–Friday from 9:00am–4:00pm

Elementary School

Creative Arts & Science

Bugg

825 Cooper Road
Raleigh 27610
919.250.4750

Douglas

600 Ortega Road
Raleigh 27609
919.881.4894

Gifted & Talented

Fuller (AG Basics)

806 Calloway Drive
Raleigh 27610
919.856.7625

Hunter (AG Basics)

1018 E. Davie Street
Raleigh 27601
919.856.7676

Powell

1130 Marlborough Road
Raleigh 27610
919.856.7737

Underwood

1614 Glenwood Avenue
Raleigh 27608
919.856.7663

Washington

1000 Fayetteville Street
Raleigh 27601
919.856.7960

Wendell

3355 Wendell Boulevard
Wendell 27591
919.365.2660

Zebulon

700 Proctor Street
Zebulon 27597
919.404.3680

Leadership

Combs

2001 Lorimer Road
Raleigh 27606
919.233.4300

Museums

Brooks

700 Northbrook Drive
Raleigh 27609
919.881.1350

Center for Spanish Language/IB PYP

Joyner

2300 Noble Road
Raleigh 27608
919.856.7650

IB Primary Years Programme

Farmington Woods

1413 Hampton Valley Road
Cary 27511
919.460.3469

Millbrook

1520 E. Millbrook Road
Raleigh 27609
919.850.8700

International Studies

Wiley

301 St. Mary's Street
Raleigh 27605
919.856.7723

Active Learning & Technology

Conn

1220 Brookside Drive
Raleigh 27604
919.856.7637

Montessori

Poe

400 Peyton Street
Raleigh 27610
919.250.4777

Middle School

Creative Arts & Science

East Millbrook
3801 Spring Forest Road
Raleigh 27616
919.850.8755

Gifted & Talented

Carnage (AG Basics)
1425 Carnage Drive
Raleigh 27610
919.856.7600

Ligon (AG Basics)
706 E. Lenoir Street
Raleigh 27601
919.856.7929

Martin
1701 Ridge Road
Raleigh 27607
919.881.4970

Zebulon
1000 Shepard School Road
Zebulon 27597
919.404.3630

Museums

Moore Square
301 S. Person Street
Raleigh 27601
919.664.5737

High School

GT/IB Center for Humanities, Sciences & the Arts

Enloe
128 Clarendon Crescent
Raleigh 27610
919.856.7918

Early College

Wake Early College of Health and Science
2901 Holston Lane
Raleigh 27610
919.850.1793

International Baccalaureate

Broughton
723 St. Mary's Street
Raleigh 27605
919.856.7810

Garner
2101 Spring Drive
Garner 27529
919.662.2379

University Connections & Leadership

Centennial Campus
1900 Main Campus Drive
Raleigh 27606
919.233.4217

IB Middle Years Programme

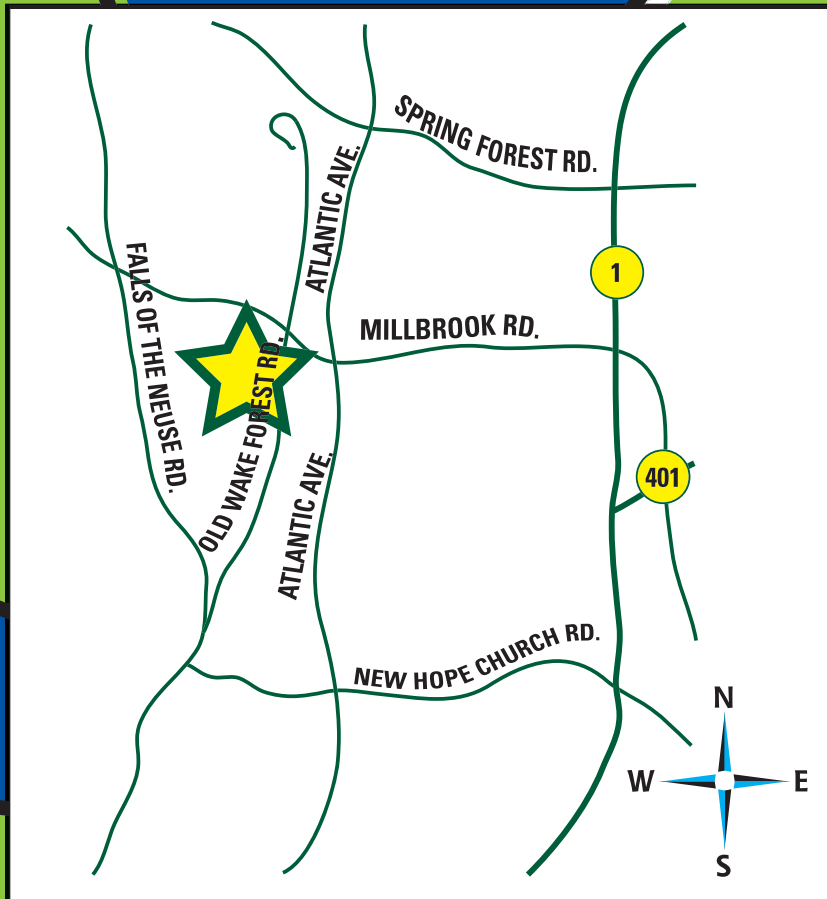
Daniels
2816 Oberlin Road
Raleigh 27608
919.881.4860

East Garner
6301 Jones Sausage Road
Garner 27529
919.662.2339

East Millbrook
3801 Spring Forest Road
Raleigh 27616
919.850.8755

Center for Leadership & Technology

Southeast Raleigh
2600 Rock Quarry Road
Raleigh 27610
919.856.2800



WAKE COUNTY
PUBLIC SCHOOL SYSTEM



Magnet Resource Center
1600 East Millbrook Road
Raleigh, North Carolina 27609
phone: 919.501.7900
email: magnetcenter@wcpss.net

www.wcpss.net/magnet