

# Introduction to QuickPlace

Evaluation and Research Department



Hello.

This presentation will introduce you to QuickPlace, an intranet site used by the Evaluation and Research Department of Wake County Public Schools to share testing results with schools and other central services departments. You may want to take a moment during this introduction to adjust the volume on your computer so that you can hear the audio clearly.

This self-paced presentation is about 15 minutes long. If you need to stop prior to the end of the presentation, you can always come back to it later and pick up where you left off, or start it over from the beginning.

You can also print out a copy of this presentation in .PDF format from the same website where you accessed this presentation. That file will contain graphics of the slides and other images that you will see during the presentation, along with a written script of the audio information that you will hear. If you think you might be taking notes as the presentation goes along, you may want to print the .PDF file out before you continue this presentation and take notes directly on it.

OK - So let's begin.

# Purpose of Session

- How to get access
- How to navigate
- How to find specific reports/data



After viewing this presentation, you should know how to access the QuickPlace website, how to navigate through the various layers of folders in QuickPlace, and how to find specific reports and data sources within QuickPlace that will help you to evaluate student achievement results for your school.

# What is QuickPlace?

- Intranet site
- Testing Office provides access
  - Principal, Test Coordinator at each school
- School-specific data
- Public (i.e., non-password area) has system-level reports as well
  - Good way to benchmark school reports!



What is Quick Place? QuickPlace is a site on the system's intranet that serves as the repository for most of the testing and accountability results that are generated for schools as a result of the myriad tests that students participate in under the state's testing program.

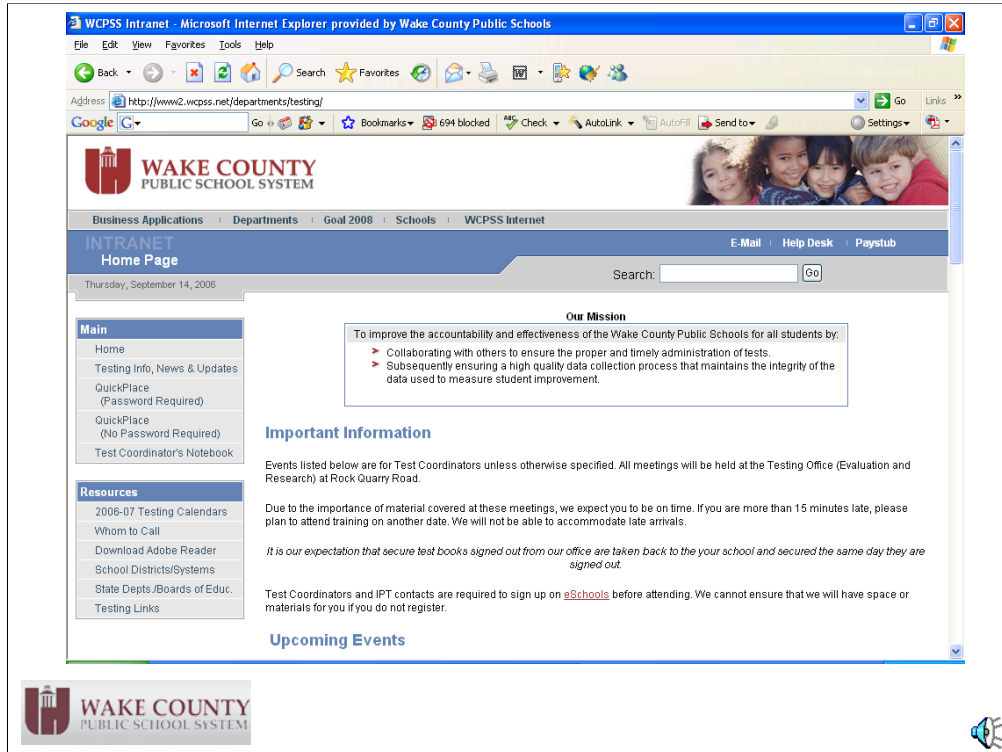
Access to this site, because it is on the intranet, is limited to computers that are physically attached to the school system's network. This means that you have to be in a Wake county school or administration building to get to the site. It is not accessible via the "regular" internet, unfortunately. While this provides us with increased security for the sensitive student-specific information that is stored there, the downside is that you can't access it from outside the school system's buildings.

The Testing Office coordinates access to QuickPlace. Typically, each principal and each school-level testing coordinator are given logins and passwords that give them access to their school's data in QuickPlace.

Schools are not given access to the data for any other schools – that is, you and only you can see the data for your school when you log in, and you cannot see anyone else's data.

There is also a public area of QuickPlace that is available to anyone in the system without the need for a login and password. This "public" area of QuickPlace contains many system-level reports that parallel the school-level reports that are available in the password-protected area. These reports are often a good source of benchmark information for use when interpreting school-level reports.

The next several slides will show you step-by-step how to log in to QuickPlace and how to locate different kinds of reports.



In order to access QuickPlace, you must open your web browser to the school system’s intranet site – [www2.wcpss.net](http://www2.wcpss.net).

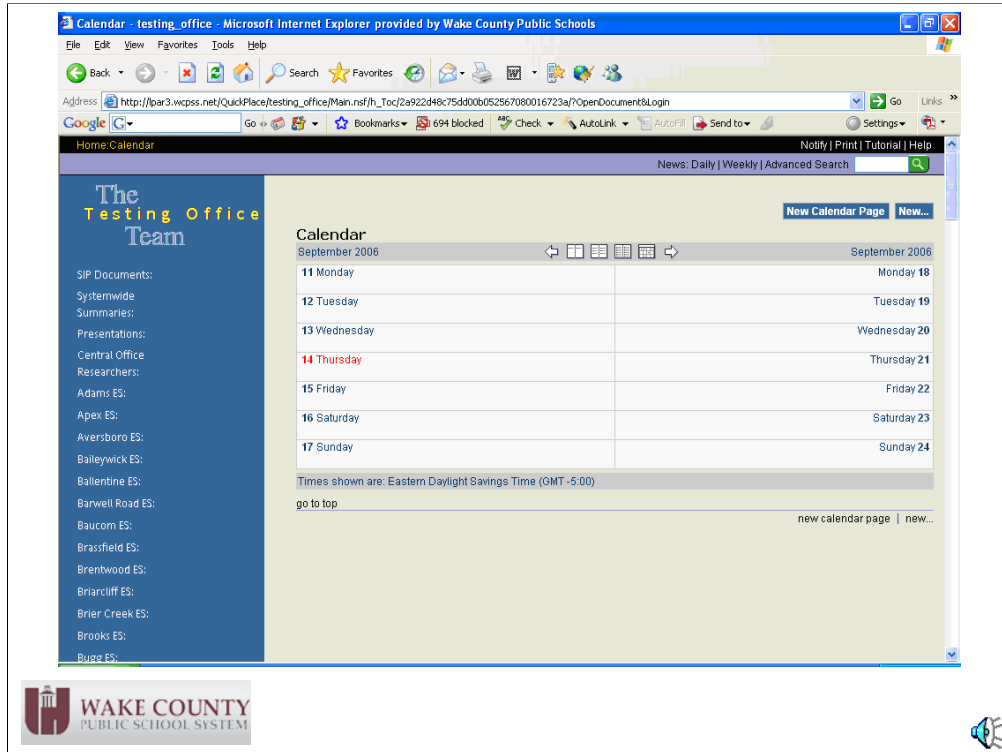
The easiest way to get into QuickPlace is to navigate to the Testing Office’s intranet website. To do this, click on the link near the top of the page that says “Departments”. This will bring you to an alphabetical list of intranet sites.

Go under “T”, and click on the link that says “Testing Office”. This should bring you to the Testing Office’s intranet site.

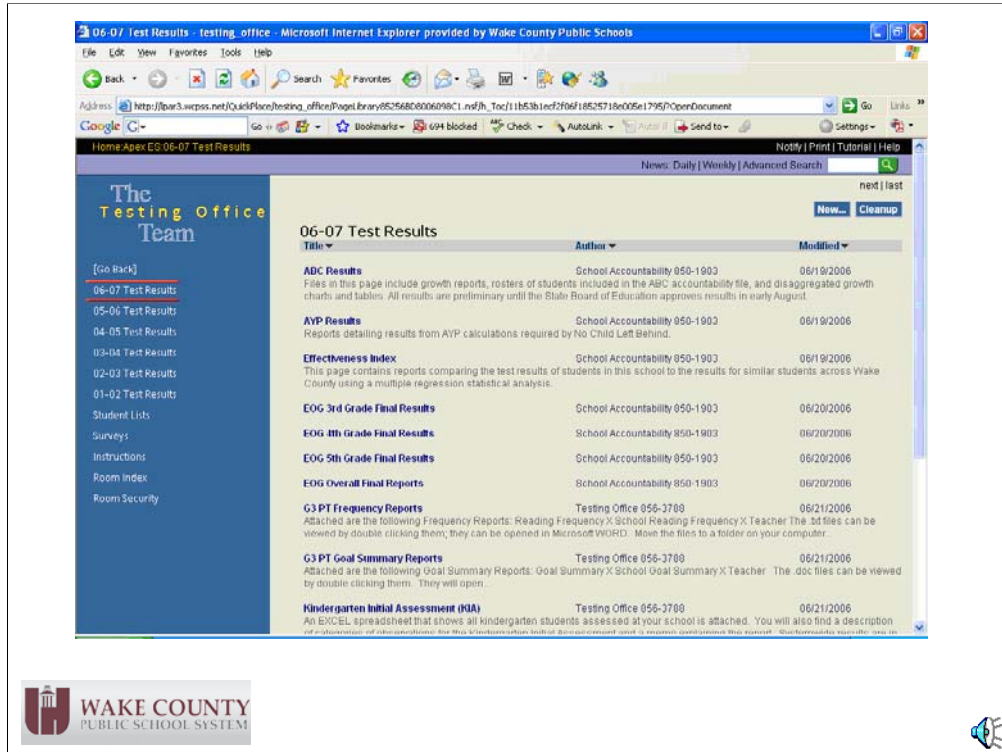
On the Testing Office’s main page, the link for QuickPlace can be found in the navigation area on the left-hand side of the page. Notice that there are two links here – one of which is the password-protected area that gives you access to your school’s data, and the other which does not require a password and which gives you access to only the system-level information.

You can also access the system-level information in the non-protected area of QuickPlace from your school’s password-protected area, so if you have a password for your school, there’s no need to go to both sites. The non-protected area is merely a subset of the information you see when you log in under the password-protected area.

Once you click on the “password protected” link, you will be prompted to put in your login name and password to gain access to the QuickPlace documents that pertain to your school.



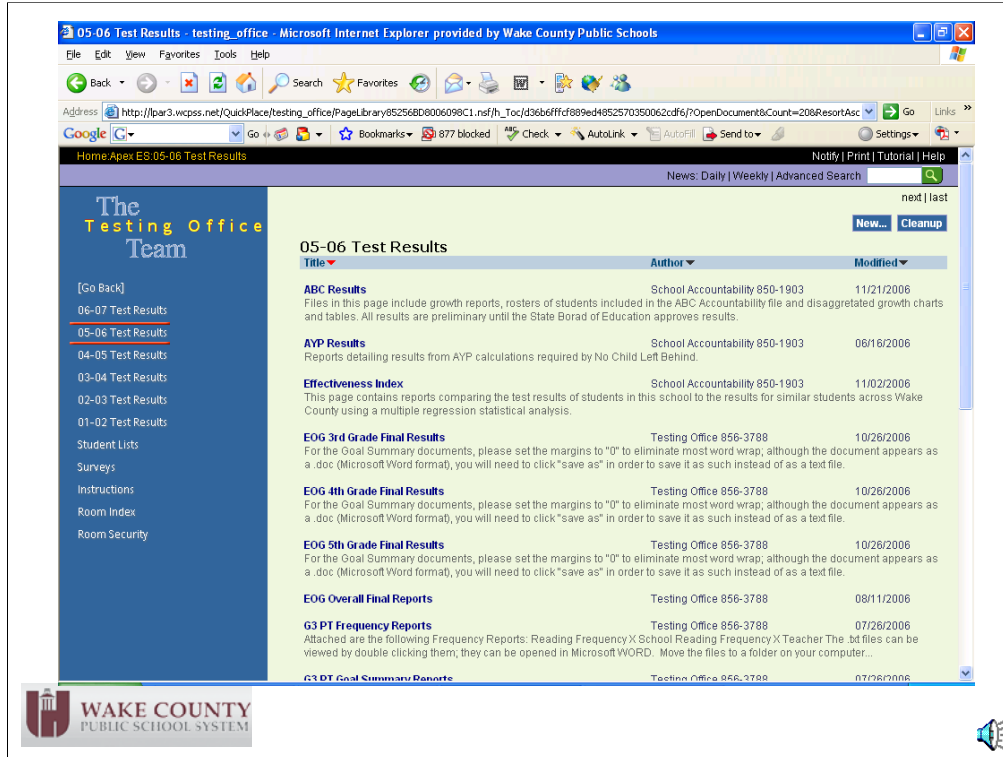
QuickPlace contains a vast amount of student, teacher, and school-level reports which are organized into what we call “folders”, much like file folders in a filing cabinet. When you first log in to the password-protected area, you will see a screen that will look much like this. There will be a large frame on the right, which is where your “folders” will show up. The left-hand area – shown here in blue – is the navigation area where your school’s name should be listed. Moving your cursor into this blue area and clicking on the “Systemwide Summaries” link takes you to the non-protected portion of QuickPlace; clicking on your school’s name takes you to your school’s data.



Once you click on your school’s name in the blue navigation area, you will come to this screen. Down the left-hand side of the screen, you will see school years listed in descending order, from the current year all the way back to 2001-02. Below that, there are links that allow you to access survey results (from the parent, staff, and student surveys WCPSS conducts every year), as well as a “Student Lists” area that will bring you to the folders that contain much of the individual student-level data in QuickPlace, most of which consists of Microsoft Excel spreadsheets.

On the right-hand side of the screen, you will see a list of folders. These folders contain the numerous reports that are produced by our department summarizing and tabulating your testing results each year – End-of-Grade (EOG), End-of-Course (EOC), Writing, K-5 assessments, the Kindergarten Initial Assessment (KIA), alternate assessments, etc. etc.

Notice however, that the default location that you end up in when you first get into QuickPlace is the current school year. So in order to access your most current results, you need to click on the year corresponding to the previous school year in the blue navigation area to get to the folders that contain your results from the tests administered last year.



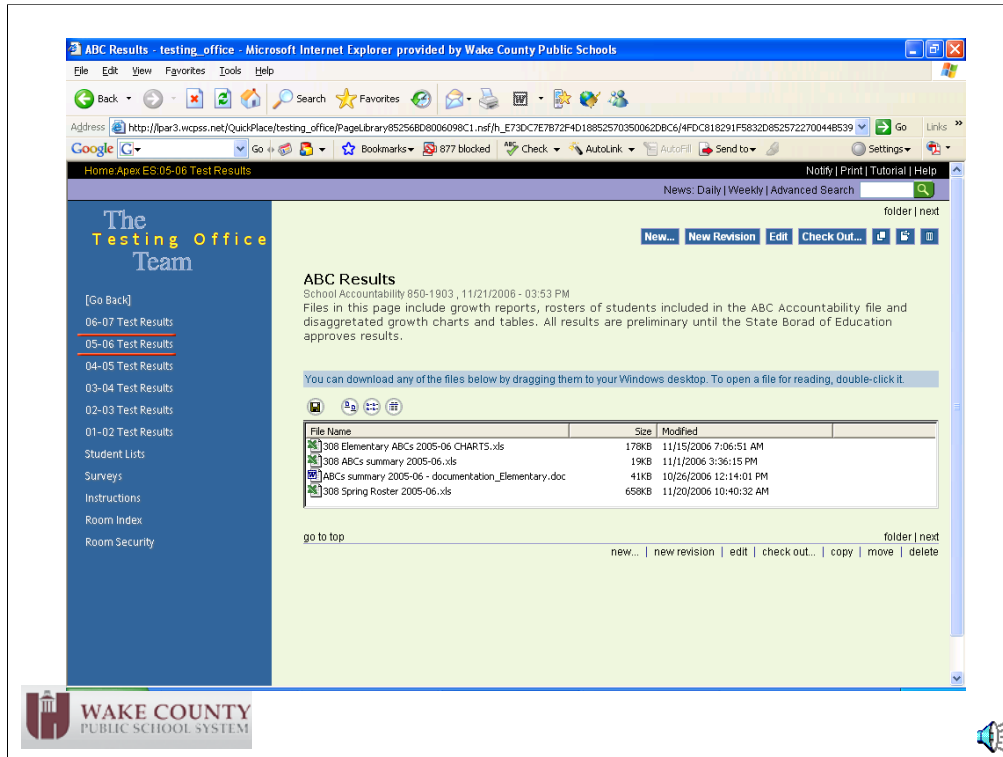
You can now access various folders on the right-hand side of the screen to begin examining your most recent test results for your school. You can click on the word "Title" on the light blue bar that runs horizontally across the top of the screen to sort your folders alphabetically. This will make it easier to find specific folders.

The links on the right-hand side of the screen are referred to as "folders", and the links in the blue navigation section on the left side of the screen are usually referred to as "areas" or "rooms".

In some cases, if your school has more than 20 folders set up for a specific school year, you will have to scroll to the bottom of the page, and click on "next" to see the remaining folders, as QuickPlace cannot display more than 20 folders on a single page. Some high schools in particular may have more than 20 folders for a given year.

You will also notice that there are two other column headings at the top of the page – "Author", and "Modified". The Author column tells you which office is generally responsible for the content of the reports in that folder. If you are using reports from a folder and have questions about them, that office is who you should call with your questions. The "Modified" column lets you know the last time that reports in that folder were modified or updated. This way, if the date has changed since the last time you checked the folder, you will know that there is some new information in that folder – either a new report has been posted, or an existing report has been changed or updated.

Directly underneath most folders, you will also see a brief description of the contents of that folder. To access the contents of any QuickPlace folder, simply click on the blue folder name.



Once you open a folder, which you can do by clicking on the name of the folder, you will be presented with a screen much like this. The rectangular box on the right-hand side of the screen contains the actual reports in the folder. In order to “see” the filenames more clearly, it is often helpful to click on the “Details” button immediately above the file box. This also allows you to see the date the file was created.

In order to access these files, you can simply double-click on any file in the list. When you open a file in QuickPlace, it opens in “read-only” format. That means that if you want to make any permanent changes to the file you must save a copy of it somewhere else on your computer, otherwise those changes will be lost.

To save a file from QuickPlace to your computer, you can either do a “Save As...” from within the report after you have opened it. Or, you can click on the file once, then click on the “Save” icon above the file box (that’s the button with the floppy disk picture on it), and then specify the location on your computer where you would like the file to be sent.

Once you have saved a file to your computer, you may manipulate it any way you see fit. And if you ever need another copy of the file, you can always come back here and re-download one. In that way, copying files from QuickPlace works much like downloading files from a website.

In order to move from one folder to another, simply click back on the school year that you want to browse to, and you will return to the list of folders for that school year. Or, you can click on the “Surveys” or “Student Lists” areas of QuickPlace to access the reports in those folders.

The remaining portion of this presentation will focus on the contents of QuickPlace by highlighting some of the more commonly accessed and used reports that are available there for schools.

## Selected QuickPlace Reports

<u>Report</u>	<u>Folder Location</u>	<u>Level of Reporting</u>
EOG Summary Reports	“Preliminary EOG Results”	by school, by grade level, by subject
EOC Summary Reports	In the folder for each individual course	by course
Goal Summary Reports (EOG and EOC)	In the folder for each individual course or test	by teacher, by school
Frequency Table Reports (EOG and EOC)	In the folder for each individual course or test	by teacher, by school
K-5 Summary Reports	“K-5 Assessment Results”	by school, by grade level, by subgroup



This slide gives a brief list of some of the more commonly-accessed files in QuickPlace and where to find them once you log in. For many of these reports, you can access a parallel version of the report in the public area of QuickPlace that you can use to compare your school’s results to the overall results for the system as a whole.

## EOG Summary Results Example

Note: PRELIMINARY RESULTS AS OF MAY 26, 2007

Public Schools of North Carolina End-of-Grade Multiple Choice Tests 2006 - 2007									
XXXXXXXX Middle preliminary findings									
LEACode=920XXX					School Name=XXXXXXXX Middle				
TestDates = Regular End-of-Year Testing May/June 2007									
Reading					Mathematics				
	2006	2007	2006 Mean	2007 Mean	2006	2007	2006 Mean	2007 Mean	
%	%	%	Develop.	Develop.	%	%	Develop.	Develop.	
III/IV	III/IV	Scale	Scale	III/IV	III/IV	Scale	Scale		
Grade 6	91.6%	89.7%	262.8	261.7	84.1%	74.1%	360.2	358.3	
Grade 7	95.1%	96.0%	265.7	265.2	73.8%	73.3%	361.5	360.6	
Grade 8	94.6%	94.0%	267.8	267.2	77.2%	76.3%	364.1	363.7	

2007 ACHIEVEMENT LEVEL PERFORMANCE OF STUDENTS BY GRADE   COMPARISON 2006 to 2007									
Reading					Mathematics				
		2007		2007		2006		2007	
Grade	Level	Number	Percent	Number	Percent	Percent	Percent	Percent	Percent
6	4	182	48.1%	125	33.1%	51.2%	48.1%	39.0%	33.1%
6	3	157	41.5%	155	41.0%	40.4%	41.5%	45.1%	41.0%
6	2	30	7.9%	80	21.2%	6.9%	7.9%	10.0%	21.2%
6	1	9	2.4%	18	4.8%	1.5%	2.4%	5.9%	4.8%
7	4	251	62.3%	119	29.5%	64.2%	62.3%	34.7%	29.5%
7	3	136	33.7%	177	43.8%	30.9%	33.7%	39.1%	43.8%
7	2	13	3.2%	78	19.3%	3.7%	3.2%	20.1%	19.3%
7	1	3	0.7%	30	7.4%	1.2%	0.7%	6.1%	7.4%



End-of-Grade (or EOG) Summary Reports show the number and percentage of students in your school who scored at each achievement level on the end-of-grade tests for a given school year. These results are presented at the overall school level, by grade level, and by subject. They also compare the results for the current year with the same results from the previous year. These reports are typically posted into QuickPlace within a day or two of the end of testing. These reports can be found in the “Preliminary EOG Results” folder.

Report: EOC Summary Reports  
 Location: In the folder for each individual course  
 Level of Reporting: By course

A	B	C	D	E	F	G	H	I	J	K	L	M	N	O
<b>Algebra</b>	FALL	06-07	FALL	07-08	SYSTEM	07-08		<b>Biology</b>	FALL	06-07	FALL	07-08	SYSTEM	07-08
	# of tests	% of total	# of tests	% of total	# of tests	% of total			# of tests	% of total	# of tests	% of total	# of tests	% of total
Amer Ind	0	#DIV/0!	0	#DIV/0!	0	#DIV/0!		Amer Ind	1	100.0	1	0.0	11	54.5
Asian	7	71.4	11	81.8	96	78.1		Asian	17	70.6	24	79.2	202	86.1
Black	41	46.3	52	44.2	806	41.1		Black	67	40.3	65	49.2	1251	47.5
Hispanic	16	50.0	16	50.0	172	50.0		Hispanic	28	64.3	18	72.2	358	54.5
Multiracial	3	66.7	10	70.0	78	69.2		Multiracial	10	80.0	7	85.7	143	73.4
White	127	89.8	112	85.7	1206	86.5		White	237	92.0	202	91.6	2323	88.5
TOTAL	194	76.3	201	71.1	2358	67.4		TOTAL	360	78.9	317	80.4	4288	73.0
<b>Algebra II</b>	FALL	06-07	FALL	07-08	SYSTEM	07-08		<b>Chemistry</b>	FALL	06-07	FALL	07-08	SYSTEM	07-08
	# of tests	% of total	# of tests	% of total	# of tests	% of total			# of tests	% of total	# of tests	% of total	# of tests	% of total
Amer Ind	1	0.0	0	#DIV/0!	8	62.5		Amer Ind	0	#DIV/0!	0	#DIV/0!	5	100.0
Asian	19	84.2	19	89.5	176	92.6		Asian	0	#DIV/0!	24	91.7	169	94.7
Black	34	35.3	39	69.2	760	56.4		Black	0	#DIV/0!	13	69.2	351	62.4
Hispanic	16	62.5	10	80.0	194	67.5		Hispanic	0	#DIV/0!	5	100.0	98	83.7
Multiracial	11	81.8	3	100.0	101	71.3		Multiracial	0	#DIV/0!	2	50.0	48	79.2
White	204	87.7	234	88.9	2525	84.8		White	0	#DIV/0!	146	91.1	1507	84.6
TOTAL	285	79.3	305	86.2	3764	78.2		TOTAL	0	#DIV/0!	190	89.5	2178	81.7
<b>Geometry</b>	FALL	06-07	FALL	07-08	SYSTEM	07-08		<b>Physics</b>	FALL	06-07	FALL	07-08	SYSTEM	07-08
	# of tests	% of total	# of tests	% of total	# of tests	% of total			# of tests	% of total	# of tests	% of total	# of tests	% of total
Amer Ind	0	#DIV/0!	0	#DIV/0!	9	88.9		Amer Ind	0	#DIV/0!	0	#DIV/0!	1	100.0
Asian	16	87.5	18	94.4	188	89.4		Asian	0	#DIV/0!	4	75.0	66	92.4
Black	53	37.7	55	69.1	934	47.0		Black	0	#DIV/0!	1	100.0	49	69.4
Hispanic	13	53.8	16	62.5	242	64.1		Hispanic	0	#DIV/0!	2	100.0	27	70.4
Multiracial	9	66.7	5	60.0	113	71.7		Multiracial	0	#DIV/0!	3	100.0	23	82.6
White	205	90.7	161	91.3	1897	85.1		White	0	#DIV/0!	39	89.7	463	92.0
TOTAL	296	78.7	255	84.3	3383	72.9		TOTAL	0	#DIV/0!	49	89.8	629	89.0
<b>C and E</b>	FALL	06-07	FALL	07-08	SYSTEM	07-08		<b>Phys Sci</b>	FALL	06-07	FALL	07-08	SYSTEM	07-08



End-of-Course (or EOC) Summary Reports present basically the same information as the EOG Summary Reports for the various end-of-course tests given in middle and high schools. These results are presented by course. Like EOG Summary Reports, they also compare the results for the current year with the same results from the previous year. These reports are also typically posted into QuickPlace within a day or two of the end of testing. These reports can be found in the “School-Wide Summaries” folder for each school.



**Report:** Frequency Reports

**Location:** In the folder for each individual course or test

**Level of Reporting:** By teacher, by school

PUBLIC SCHOOLS OF NORTH CAROLINA END-OF-GRADE TESTS 2006-2007  
Grade 8 Reading Developmental Scale Score Frequency Report  
Regular test administration

LEASchCode = xxxxx SchoolName = xxxxxxxx  
TestDates = Regular End-of-Year Testing May/June 2007  
InstrName = xxxxxxxx

Summary Statistics

Number of Students with Valid Scores	25	High Score	281
		Low Score	239
Mean	263.76	Local Percentiles	Scale Score
		90	275.0
		75	272.0
Standard Deviation	10.08	50 (Median)	264.0
		25	258.0
		10	253.0
Mode	273,269,267,262,256		

Frequency Distribution

Dev Scale Score	Frequency	Cumulative Frequency	Percent	Cumulative Percent	Achievement Level
281	1	25	4.00	100.00	IV
276	1	24	4.00	96.00	IV
275	1	23	4.00	92.00	IV
274	1	22	4.00	88.00	IV
273	2	21	8.00	84.00	IV
272	1	19	4.00	76.00	IV
269	2	18	8.00	72.00	IV
267	2	16	8.00	64.00	IV



Frequency Reports show the distribution of scale scores on an EOG or EOC test – the number of students who obtained each scale score result, and the mapping of those scale score points to the achievement levels. Like Goal Summaries, these reports are produced by school and by teacher for each test administered in a school. These reports can be found in the folders for each individual course (for EOCs) or grade level (for EOGs). They are typically posted into QuickPlace within a month or so following testing.

Report: K-5 Summary Reports  
 Location: K-5 Assessment Results  
 Level of Reporting: By school, by grade level, by subgroup

*XXXXX Elementary*  
 K-5 Literacy Assessment Results for 2006-07  
 K-2 Reading Book-Level Standards for No Child Left Behind Subgroups  
 FRLcode0607=FRL

School	Grade 0607	Book-Level Standard	Total			
			# Students Assessed	# Achieved Standard	% Achieved Standard	# Missing Data
XXXX ELEM	K	3-4	45	26	57.8%	15
	1	15-16	61	30	49.2%	0
	2	23-24	43	29	67.4%	1
	K-2 Combined		149	85	57.0%	16

----- Results not shown due to small sample size. Five or fewer students achieved the standard.

*Missing data includes students who teachers identified as having no running record.*

*Created on Wednesday 18JUL2007*



K-5 Summary Reports are found in the “K-5 Assessment Results” folder. These reports show the number and percentage of students at each achievement level on the Spring administration of our locally-administered K-5 assessments in reading, writing, and math. Some of these reports also disaggregate those results by subgroup based on ethnicity, free lunch status, disability status, etc. Many of the K-5 reports also contain system-level results to use in benchmarking your own school’s results.

## Selected QuickPlace Reports

<u>Report</u>	<u>Folder Location</u>	<u>Level of Reporting</u>
ABC Reports	“ABC Results”	by school, by test, by course/subject, by grade, by subgroup, by student
Effectiveness Index	“Effectiveness Index”	by grade, by course/subject
Residual Rosters	“Effectiveness Index”	by teacher, by class period
Class Score Rosters	In the folder for each individual course or test	by teacher, by class period
Current Student Rosters w/ achievement history	Under the <i>Student Lists</i> area, in the “Student Information” folders	by student



In addition to reports giving you snapshots of aggregate student performance , QuickPlace also houses reports that provide information on student growth, as well as databases containing scores over time for individual students.

Report: ABCs Summary

Location: ABCs Results

Level of Reporting: By school / test / course-subject / grade

SCHOOL	Subject	Percent Tested	Number Tested	Percent Proficient	# Included in ABCs Growth	Number made growth	Average Academic Change	High Growth Ratio	% Students with AC=0	Expected Growth Status	High Growth Status
	Grade 3 Math	100.0	82	84.1					NA	NA	NA
	Grade 4 Math	100.0	105	83.8	97	76	0.34	3.62	78.4	Met	Met
	Grade 5 Math	100.0	125	87.2	122	75	0.13	1.60	81.5	Met	Met
	Grade 3 Reading	100.0	82	96.3	81	36	0.01	0.80	44.4	NotMet	NotMet
	Grade 4 Reading	100.0	105	91.4	97	71	0.30	2.73	73.2	Met	Met
	Grade 5 Reading	100.0	125	96.0	120	67	0.07	1.26	55.8	Met	NotMet
	Math All Grades	100.0	312	85.3	219	151	0.22	2.22	69.0	Met	Met
	Reading All Grades	100.0	312	94.6	298	174	0.12	1.40	58.4	Met	NotMet
	All EOG Combined	100.0	624	89.9	517	325	0.17	1.69	62.9	Met	Met
	Writing	99.0	104	56.7						NA	NA
	Writing (with Conf.Int.)	99.0	104	64.4						NA	NA
	<b>Overall Results</b>	<b>99.9</b>	<b>728</b>	<b>86.3</b>	<b>517</b>	<b>325</b>	<b>0.17</b>	<b>1.69</b>	<b>62.9</b>	<b>Met</b>	<b>Met</b>
WCPSS	Grade 3 Math	99.9	9763	77.1						NA	NA
WCPSS	Grade 4 Math	99.8	9284	75.2	7752	4337	0.07	1.27	56.0	Met	Not Met
WCPSS	Grade 5 Math	99.8	9312	72.9	7982	4416	0.05	1.24	55.3	Met	Not Met
WCPSS	Grade 3 Reading	99.3	9707	87.8	8612	4345	0.02	1.02	50.5	Met	Not Met
WCPSS	Grade 4 Reading	98.9	9201	89.5	7687	4460	0.10	1.38	58.0	Met	Not Met
WCPSS	Grade 5 Reading	99.5	9277	91.9	7888	4154	0.04	1.11	52.7	Met	Not Met
WCPSS	Math All Grades	99.8	28359	75.1	15734	8753	0.06	1.25	55.6	Met	Not Met
WCPSS	Reading All Grades	99.2	28185	89.7	24187	12959	0.05	1.15	53.6	Met	Not Met
WCPSS	All EOG Combined	99.5	56544	82.4	39921	21712	0.06	1.19	54.4	Met	Not Met
WCPSS	Writing	95.9	9071	58.9						NA	NA
WCPSS	Writing (with Conf.Int.)	95.9	9071	66.2						NA	NA
WCPSS	<b>Overall Results</b>	<b>99.0</b>	<b>65615</b>	<b>80.1</b>	<b>39921</b>	<b>21712</b>	<b>0.06</b>	<b>1.19</b>	<b>54.4</b>	<b>Met</b>	<b>Not Met</b>



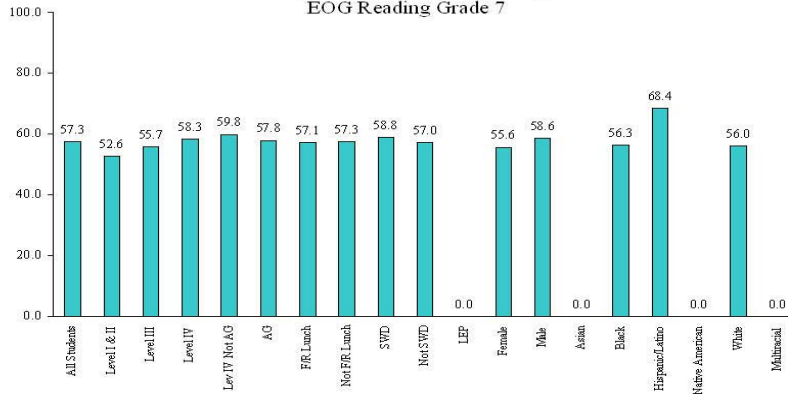
In the ABC Results folder, you can access both growth and performance results for your school under the state’s ABCs accountability model. These reports show proficiency and growth by subject area and grade level, both for the school as a whole as well as for various student subgroups within your school. These results are presented in both table and chart format. These reports are typically not available until the State Board of Education certifies the accountability results for each school, which is usually late summer or early fall.

**Report:** Disaggregated ABCs Results

**Location:** ABCs Results

**Level of Reporting:** By school / test / course-subject / grade subgroup

Percent Meeting Growth Target by Subgroup 2005-06  
EOG Reading Grade 7



Report: End of Year Roster  
 Location: ABCs Results  
 Level of Reporting: by student

	A	B	V	W	X	Y	Z	AA	AB
1	NCWISE ID	Last Name, First Name	Reading SS Grade 3	Reading Ach Lvl Grade	Reading Cscore Grade 3	Reading Residual Grade 3	Reading SS Grade 4	Reading Ach Lvl Grade	Reading Cscore Grade 4
495			259	4	1.23	1.65	256	4	0.43
496			266	4	2.00	5.80	272	4	2.27
497			257	4	1.00	-6.31	268	4	1.81
498			257	4	1.00	0.79	260	4	0.89
499									
500			248	3	0.01	-5.93	252	3	-0.04
501			254	4	0.67	4.06	257	4	0.54
502			256	4	0.89	-3.06	261	4	1.00
503			263	4	1.67	4.51	269	4	1.93
504			258	4	1.11	3.50	264	4	1.35
505			247	3	-0.10	-4.65	250	3	-0.27
506			254	4	0.67	-0.50	251	3	-0.15
507			252	4	0.45	1.83	251	3	-0.15
508			256	4	0.89	-0.21	256	4	0.43
509			251	4	0.34	-3.50	253	3	0.08
510			257	4	1.00	-2.06	260	4	0.89
511			256	4	0.89	4.35	256	4	0.43
512							268	4	1.81
513									
514			242	3	-0.65	-6.71	248	3	-0.50
515			248	3	0.01	-4.79	253	3	0.08
516			252	4	0.45	0.35	255	4	0.31
517			251	4	0.34	-0.65	256	4	0.43
518			244	3	-0.43	5.45	246	3	-0.73
519			259	4	1.23	11.43	256	4	0.43
520			263	4	1.67	-0.61	272	4	2.27
521			247	3	-0.10	2.77			
522			266	4	2.00		264	4	1.35
523			243	3	0.65	0.47	249	3	0.60

There is also a Microsoft Excel spreadsheet in the ABC Results folder containing the EOG and EOC testing results for each student in the school, along with demographic information and historical test scores for each student. This is an example of one of the many QuickPlace data sources that contains individually-identifiable student information; schools need to be very careful about who is able to access this type of report to ensure that they are not in violation of FERPA or other laws governing access to student educational records.

Report: Effectiveness Index Summary  
 Location: Effectiveness Index Results  
 Level of Reporting: By grade, by course/subject

	6th Grade Reading	6th Grade Math	7th Grade Reading	7th Grade Math	8th Grade Reading	8th Grade Math
1997-98	0.49	0.60	-0.40	0.09	0.85	-0.03
1998-99	0.48	0.66	0.60	0.04	2.02	-0.17
1999-00	-0.29	-0.33	1.20	-1.04	0.84	0.09
2000-01	2.09	0.28	0.14	-0.52	1.04	0.31
2001-02	-0.76	-1.04	0.68	-0.80	0.43	-0.94
2002-03	-0.18	-0.18	0.23	-0.35	-0.35	-0.51
2003-04	-0.26	-0.31	0.56	-0.21	-0.53	-0.05
2004-05	-0.58	-0.10	-1.78	-0.99	-0.96	-0.26
2005-06	-1.51	-0.05	-0.79	-0.78	0.51	-0.46
2006-07	0.29	-0.59	0.38	-0.33	0.76	-0.46



In the Effectiveness Index folder, you will find two basic types of reports – longitudinal reports of school-level Effectiveness Indices for each grade and subject, as well as EOC and/or EOG residual rosters for each teacher and class period. These reports estimate the amount of growth students make from one year to the next by comparing their performance to the performance of other WCPSS students in that year. A brief document explaining how to interpret and use these reports is also posted there.

Report: Residual Rosters  
 Location: Effectiveness Index folder  
 Level of Reporting: By teacher, by class period

High School Effectiveness Index

NAME OF SCHOOL

Student Residuals for EOC Test: English 1

Name	ID	8th-Grade- EOG- Reading- Scale Score	8th-Grade- EOG- Math- Scale Score	2007-EL- Scale Score	2007-EL- Residual
				159	
				155	
				158	
		281	377	157	-9.41
		276	377	158	-7.64
		265	361	146	-7.09
		276	376	159	-6.37
		268	370	153	-4.92
		251	355	140	-4.36
		279	371	162	-3.67
		274	375	158	-3.41



**Report: Class Score Rosters**

**Location:** In the folder for each individual course or test

**Level of Reporting:** By teacher, by class period

PUBLIC SCHOOLS OF NORTH CAROLINA END-OF-GRADE TESTS 2006-2007  
 GRADE 5 STUDENT ACCOUNTABILITY STANDARDS READING AND MATH CLASS ROSTER  
 Regular test administration

LEASchCode = xxxxxx  
 InstrName = xxxxxx

SchoolName = xxxxx ELEMENTARY

SE Accountability Standard Level III and IV Plus One SE

Name	Reading (50)			Mathematics (50)			Met Gateway	Form
	Dev. Scale Score	Ach. Level	Met State Standard of 247 **	Dev. Scale Score	Ach. Level	Met State Standard of 351 **		
1 xxxxxxxxxxxxxxxxxxxx	267	4	Yes	363	4	Yes	PASS	Q
2 xxxxxxxxxxxxxxxxxxxx	259	4	Yes	352	3	Yes	PASS	R
3 xxxxxxxxxxxxxxxxxxxx	262	4	Yes	361	3	Yes	PASS	P
4 xxxxxxxxxxxxxxxxxxxx	260	4	Yes	371	4	Yes	PASS	M
5 xxxxxxxxxxxxxxxxxxxx	245	2	Yes 1 SE	339	1	No		N
6 xxxxxxxxxxxxxxxxxxxx	252	3	Yes	344	2	No 2 SE		P
7 xxxxxxxxxxxxxxxxxxxx	269	4	Yes	370	4	Yes	PASS	Q
8 xxxxxxxxxxxxxxxxxxxx	267	4	Yes	374	4	Yes	PASS	N
9 xxxxxxxxxxxxxxxxxxxx	258	3	Yes	359	3	Yes	PASS	K
10 xxxxxxxxxxxxxxxxxxxx	273	4	Yes	375	4	Yes	PASS	M
11 xxxxxxxxxxxxxxxxxxxx	253	3	Yes	351	3	Yes	PASS	K
12 xxxxxxxxxxxxxxxxxxxx	262	4	Yes	368	4	Yes	PASS	M
13 xxxxxxxxxxxxxxxxxxxx	265	4	Yes	365	4	Yes	PASS	R
14 xxxxxxxxxxxxxxxxxxxx	249	3	Yes	347	2	Yes 1 SE	PASS	P
15 xxxxxxxxxxxxxxxxxxxx	269	4	Yes	366	4	Yes	PASS	Q
16 xxxxxxxxxxxxxxxxxxxx	263	4	Yes	366	4	Yes	PASS	R
17 xxxxxxxxxxxxxxxxxxxx	269	4	Yes	367	4	Yes	PASS	K
18 xxxxxxxxxxxxxxxxxxxx	263	4	Yes	363	4	Yes	PASS	Q
19 xxxxxxxxxxxxxxxxxxxx	260	4	Yes	372	4	Yes	PASS	N
20 xxxxxxxxxxxxxxxxxxxx	Exempt	LEP		345	2	No 2 SE		P



In the folder for each individual course or test, you can also find rosters of test results for individual students. Unlike the Excel database in the ABC Results folder, these reports are formatted to print out neatly, and are generated immediately after tests are turned in. They provide schools immediate feedback on who passed an EOG or EOC and who did not, and are intended to be used to determine final course grades in high school, and to determine which students might qualify for re-testing under or promotion/retention policies or under the state's exit standard guidelines for high schools.

**Report:** Current Student Rosters with Achievement History  
**Location:** Under Student Lists area in the student info. Folders  
**Level of Reporting:** By student

A	B	C	D	E	F	G	H	I
NCWISE ID	Last Name, First Name	School 2008-09	YR Track 2008-09	Grade 2008-09	Homeroom	Gender	Ethnicity	LE
2	101010101 Name	School			6	Female	White	Not L
3	101010101 Name	School			6	Male	White	Not L
4	101010101 Name	School			6	Male	Black	Not L
5	101010101 Name	School			6	Male	White	Not L
6	101010101 Name	School			6	Male	Hispanic/Latino	Not L
7	101010101 Name	School			6	Female	White	Not L
8	101010101 Name	School			6	Male	Black	Not L
9	101010101 Name	School			6	Female	Hispanic/Latino	Not L
10	101010101 Name	School			6	Female	Black	Not L
11	101010101 Name	School			6	Female	Black	Not L
12	101010101 Name	School			6	Female	White	Not L
13	101010101 Name	School			6	Male	White	Not L
14	101010101 Name	School			6	Female	White	Not L
15	101010101 Name	School			6	Female	Black	Not L
16	101010101 Name	School			6	Female	Multi-Racial	Not L
17	101010101 Name	School			6	Female	White	Not L
18	101010101 Name	School			6	Male	White	Not L
19	101010101 Name	School			6	Male	Hispanic/Latino	Not L
20	101010101 Name	School			6	Female	White	Not L
21	101010101 Name	School			6	Female	White	Not L
22	101010101 Name	School			6	Female	White	Not L
23	101010101 Name	School			6	Male	White	Not L
24	101010101 Name	School			6	Female	White	Not L
25	101010101 Name	School			6	Female	Hispanic/Latino	Not L
26	101010101 Name	School			6	Female	White	Not L
27	101010101 Name	School			6	Male	Hispanic/Latino	LEP
28	101010101 Name	School			6	Female	Hispanic/Latino	Not L
29	101010101 Name	School			6	Male	Black	Not L



While most QuickPlace reports are historical in nature, the Current Student Rosters, which are found in the “Student Lists” area of QuickPlace, provide schools with a database containing a demographic profile and test score history for all of their current students. This file is updated several times per year to keep pace with the movement of students in and out of schools, and provides schools with valuable information about their current students in membership that can be used for planning purposes.

## For more information...

- Testing Office (856-3788)
  - Access/passwords
- School Accountability Office (850-1903)
- Program Accountability Office (850-1840)
- QuickPlace Resources Handout



**End of tutorial. Close browser window as usual**

These reports are a sample of the kinds of information available to schools in QuickPlace. Historical results from staff, parent, and student surveys, as well as reports of performance on other tests and assessments are also available in the various folders. As with most computerized resources, the best way to learn about them is simply to go in and look around and explore, so I would encourage you to do that in order to become more familiar with the large amount of data available in QuickPlace.

In the meantime, if you have questions about the location or content of reports in QuickPlace, you can contact one of the offices in the Evaluation and Research Department that uses QuickPlace to disseminate reports to schools. You can also access a list of commonly-referenced QuickPlace reports on the same website where you accessed this presentation. This document will let you know where to find various reports and what they contain.

If you have specific questions about access or passwords, please call the Testing Office, as they are the entity responsible for maintaining and providing access to users.

We hope that this presentation has been useful to you, and that you find value in the various reports in QuickPlace to help you evaluate, monitor, and improve learning and teaching for all students. Please make others in your school community aware of this resource, and encourage them to learn about how to access the information they need from QuickPlace to help them in their work. Thank you.