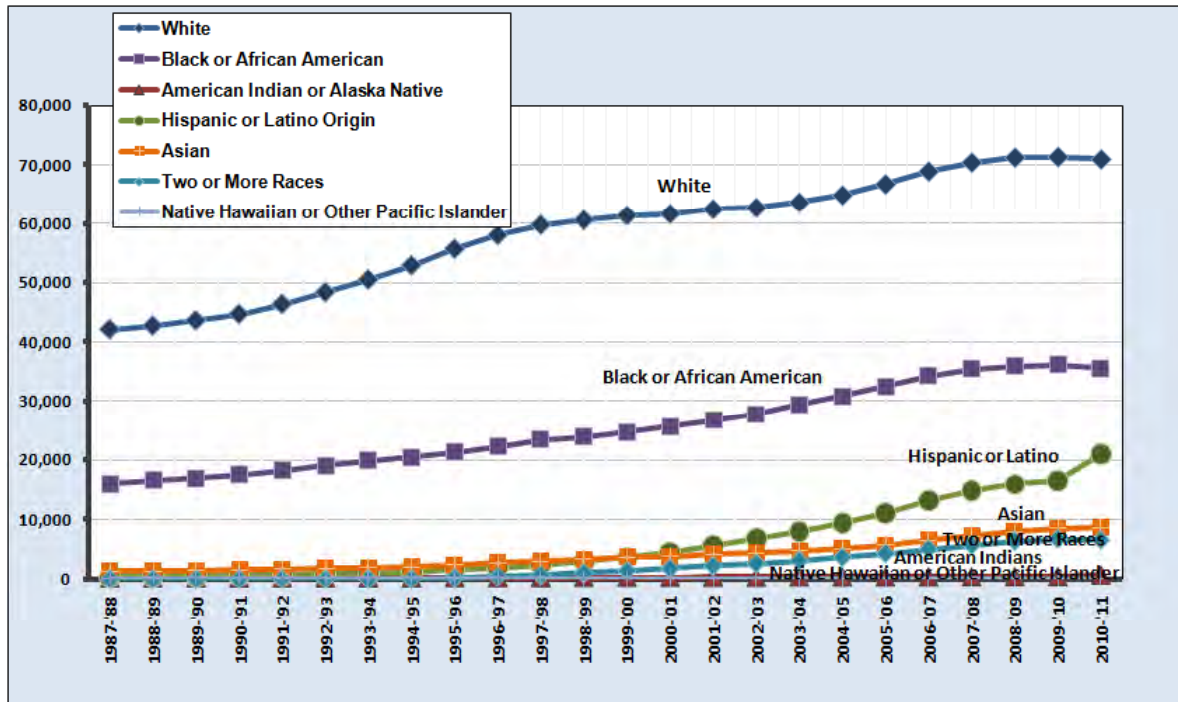

Vb.

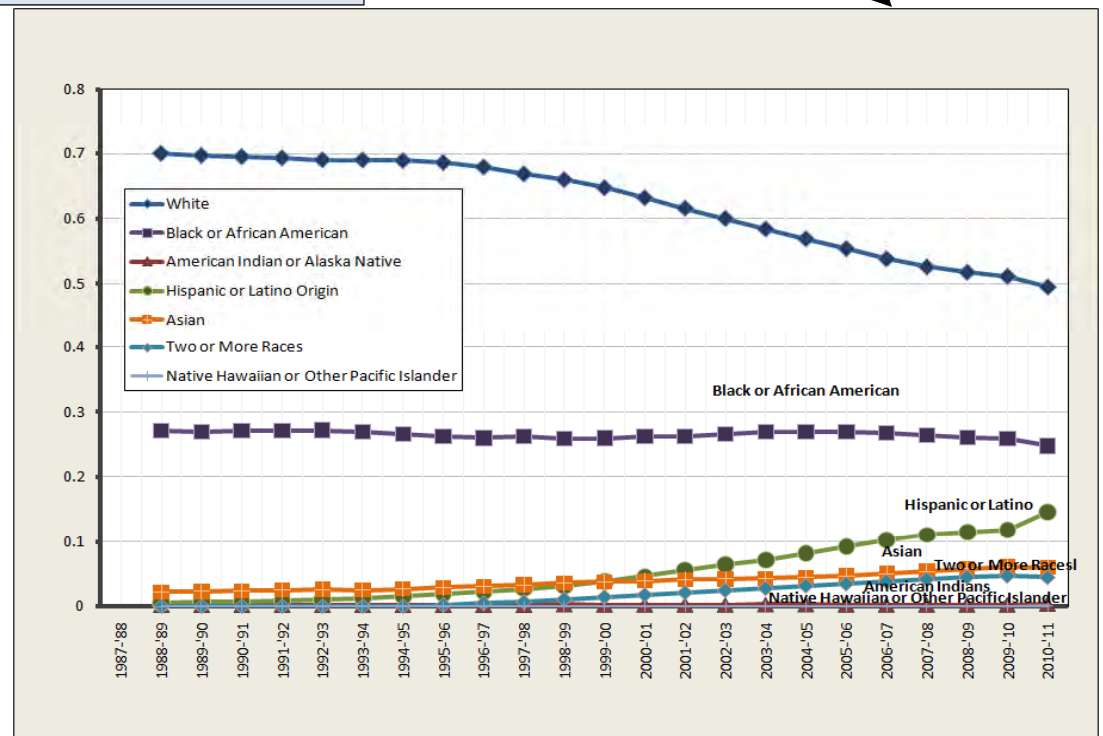
Race and Ethnicity

WCPSS Diversity is Increasing



Race/Ethnicity
By Number
By Percentage

Race/Ethnicity 2010-2011	Number of Students	Percent of Total
American Indian or Alaska Native	638	0.4%
Asian	8,644	6.0%
Black or African American	35,494	24.8%
Hispanic or Latino	20,909	14.6%
Two or More Races	6,471	4.5%
Native Hawaiian or Other Pacific Islander	147	0.1%
White	70,986	49.5%
Total	143,289	100.0%



NOTE: This is the first year that WCPSS is reporting race-ethnicity data following the Census Bureau-driven changes and the US Department of Education new standards for data collection and reporting. For example, **Multi-Racial** students can now identify the different parts of their heritage, **Hispanic or Latino** ethnicity is now treated separately from racial background, and the former "**Asian or Pacific Islander**" category has been split into two categories to distinguish students of Native Hawaiian/Pacific Islander race.

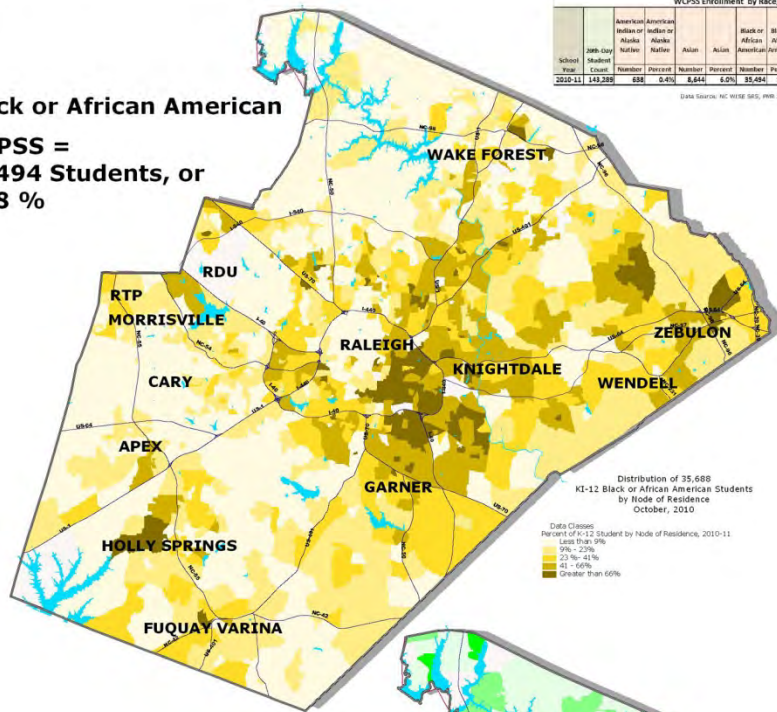
Percent of KI-12 Grade Students by Node of Residence, 2010-11 School Year

Data Set: Race and Ethnicity

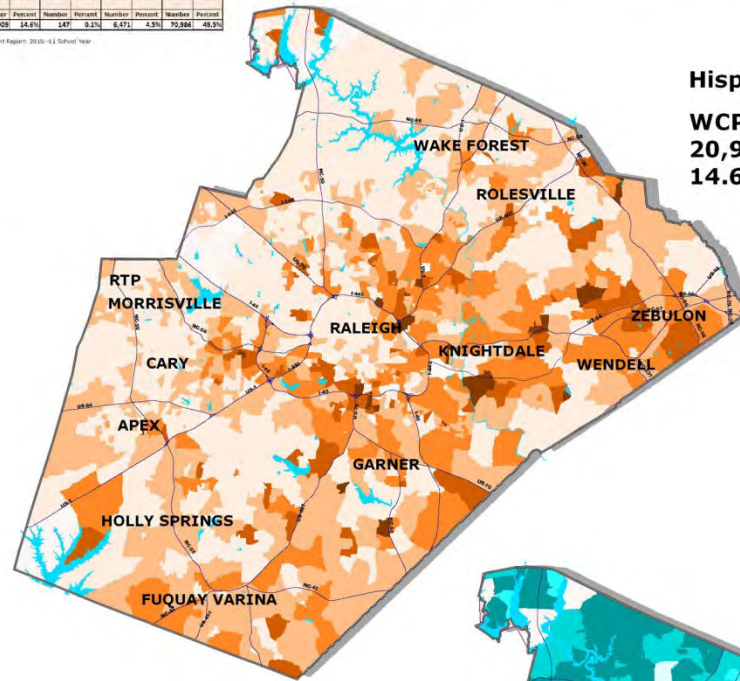
School Year	20th-Century Student Count	American Indian or Alaska Native		Asian		Black or African American		Hispanic or Latino		Native Hawaiian or Other Pacific Islander		Two or More Races		White	
		Number	Percent	Number	Percent	Number	Percent	Number	Percent	Number	Percent	Number	Percent	Number	Percent
2010-11	143,399	688	0.4%	8,644	6.0%	35,494	24.8%	23,929	14.6%	147	0.1%	6,471	4.5%	70,986	49.5%

Data Source: NC WISE SRS, PRR 2010-11; Data Report: 2010-11 School Year

Black or African American
WCPSS = 35,494 Students, or 24.8 %

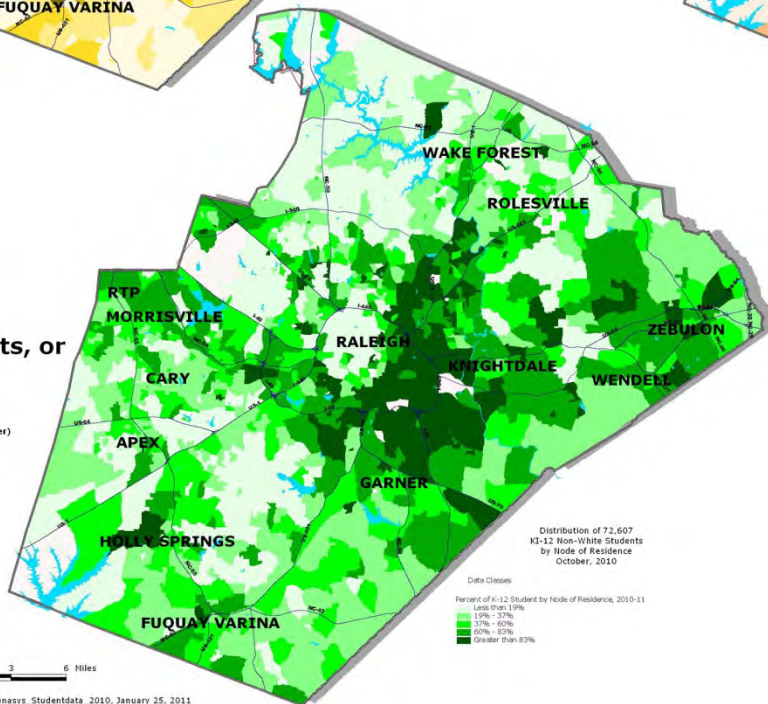


Hispanic or Latino
WCPSS = 20,909 Students, or 14.6 %

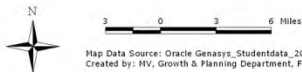
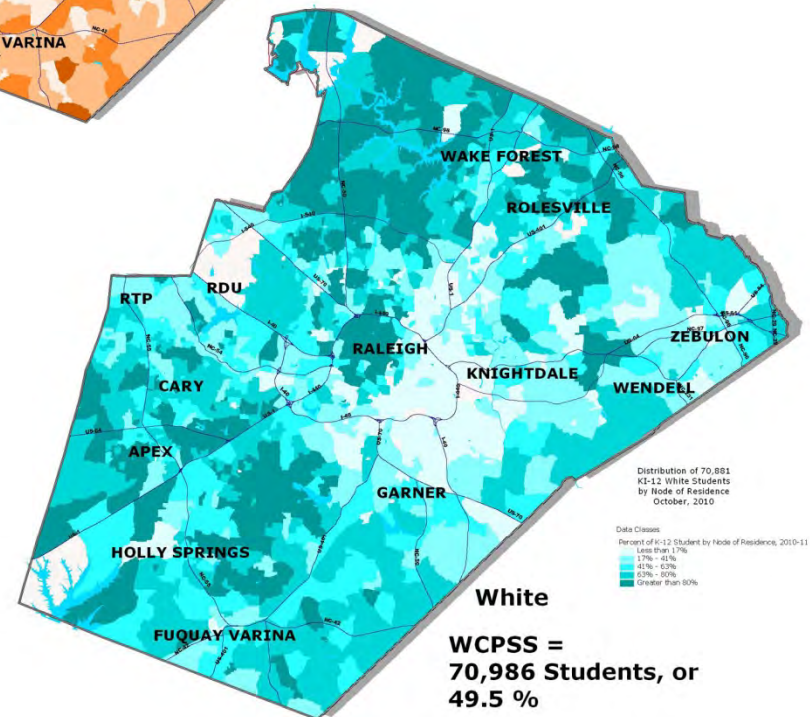


Non-White*
WCPSS = 72,303 Students, or 50.5 %

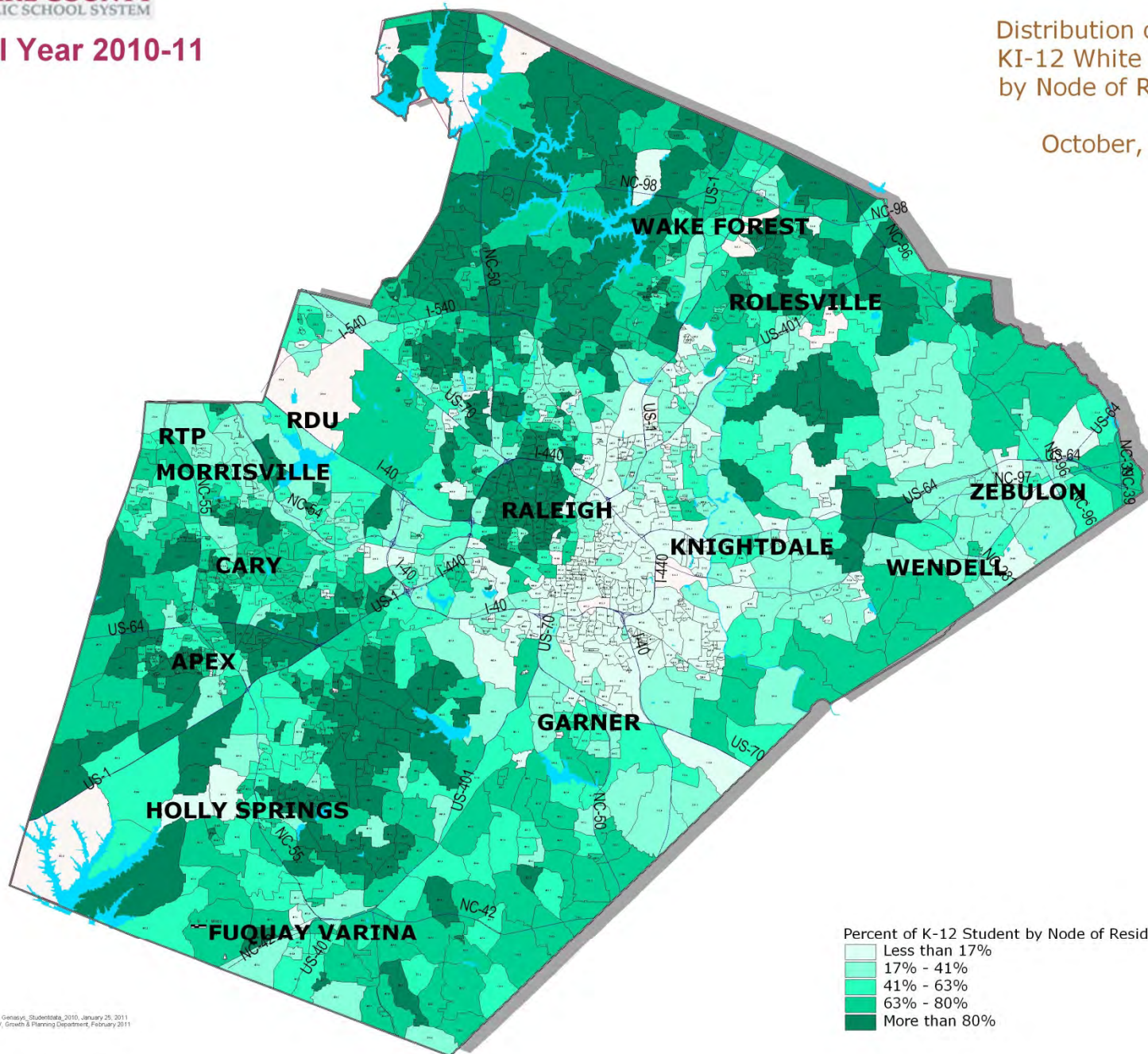
(American Indian or Alaska Native, Asian, Black or African American, Hispanic or Latino, Two or More Races, Native Hawaiian or Other Pacific Islander)



White
WCPSS = 70,986 Students, or 49.5 %



Map Data Source: Oracle Geonasy; Studentdata_2010, January 25, 2011
Created by: MV, Growth & Planning Department, February 2011

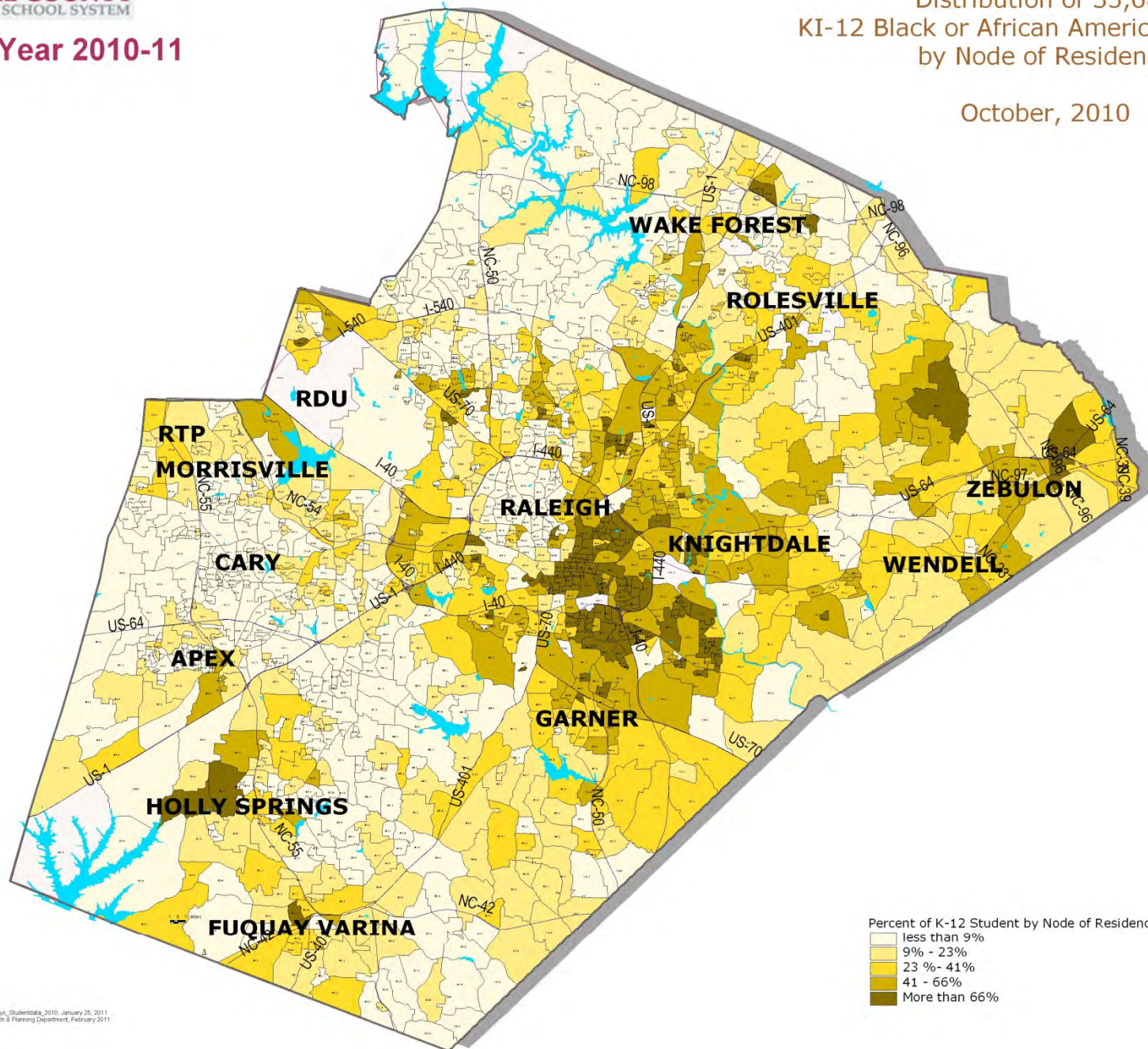


Percent of K-12 Student by Node of Residence, 2010-11

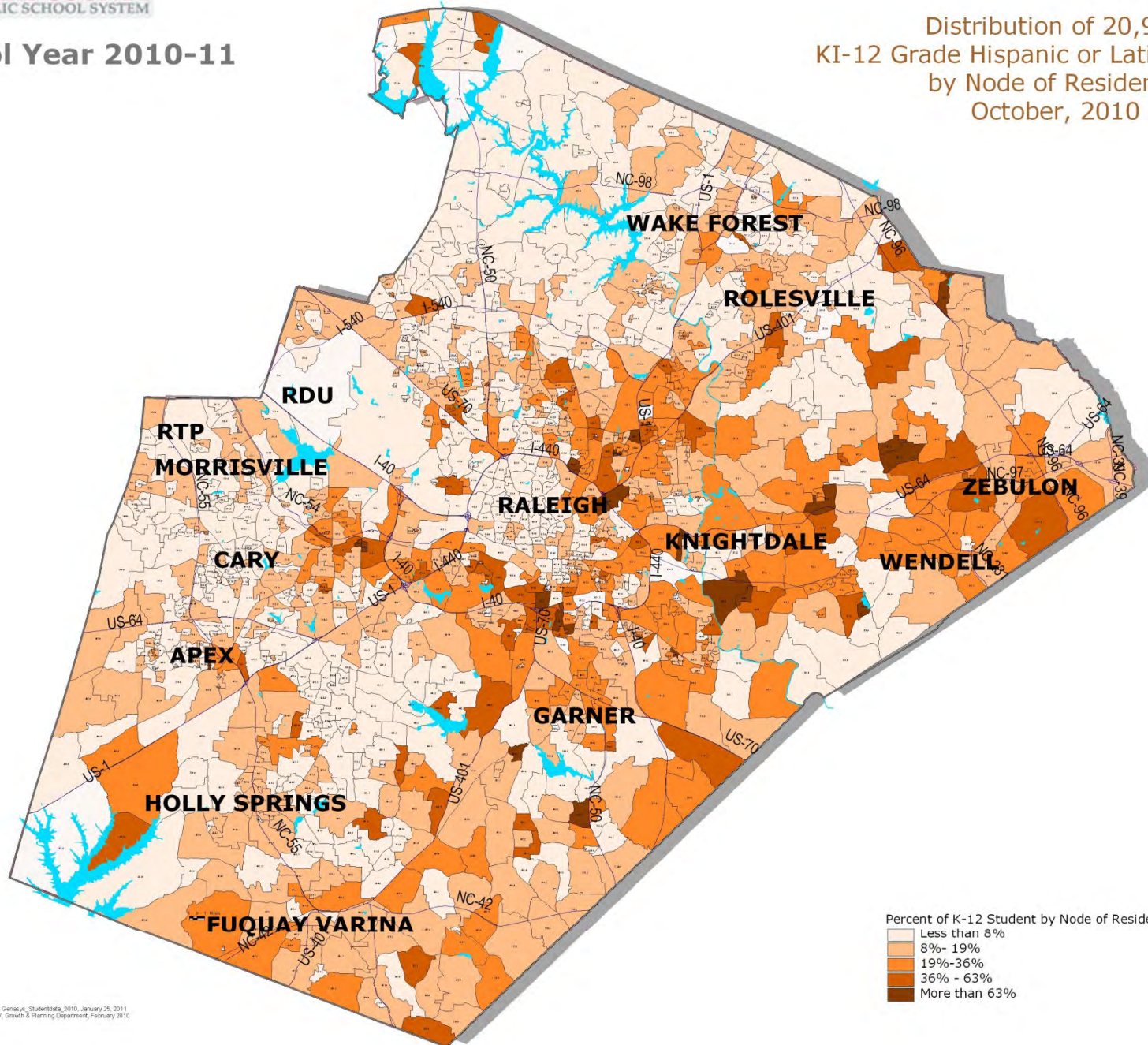
- Less than 17%
- 17% - 41%
- 41% - 63%
- 63% - 80%
- More than 80%

Source: Oracle Genesis, StudentData_2010, January 25, 2011
Created by: M.V. Growth & Planning Department, February 2011

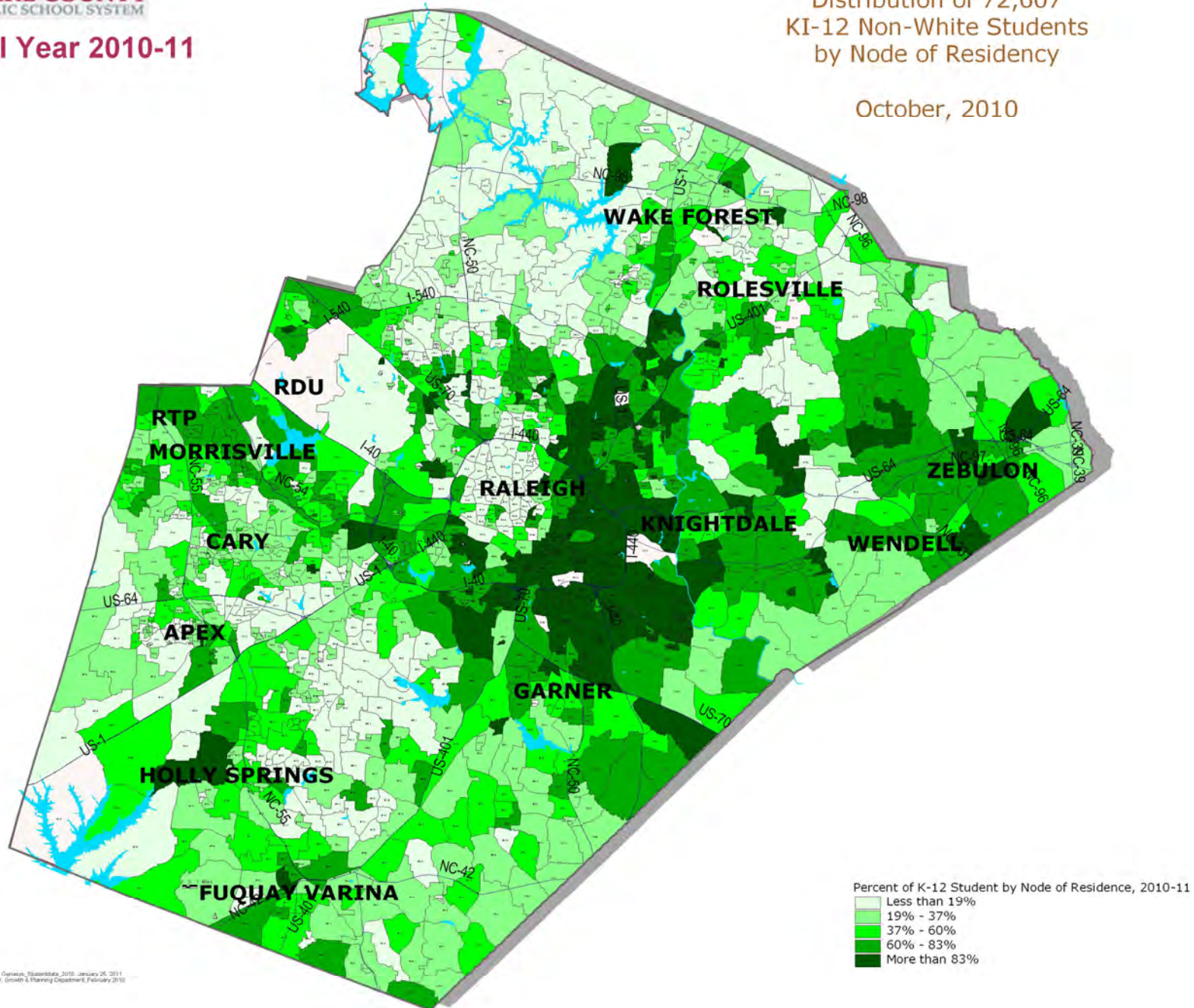
October, 2010



Source: Oracle Genesis, StudentData_2010, January 25, 2011
Created by: MVI, Growth & Planning Department, February 2011



Source: Oracle Genesis, StudentData_2010, January 25, 2011
Created by: M.V. Growth & Planning Department, February 2010



Source: Census Bureau, Statistical Data, January 26, 2011
Created by: M.V. Growth & Planning Department, February 2011

WCPSS School General Information, 2010-2011

Code	School Name	Level	Grade Span	Calendar	Magnet Program	School Membership 2010-11	American Indian and Alaska Native	Asian	Black or African American	Hispanic or Latino	Native Hawaiian and Other Pacific Islander	Two or More Races	White	Percent American Indian and Alaska Native	Percent Asian	Percent Black or African American	Percent Hispanic or Latino	Native Hawaiian and Other Pacific Islander	Percent Two or More Races	Percent White
304	Adams Elementary	E	KI-5	Y-R	N/A	806	10	52	92	176		24	452	1.2%	6.5%	11.4%	21.8%	0.0%	3.0%	56.1%
307	Alston Ridge Elementary	E		Y-R	N/A	460		118	63	36		19	224	0.0%	25.7%	13.7%	7.8%	0.0%	4.1%	48.7%
308	Apex Elementary	E	KI-5	T	N/A	670	2	16	94	135		32	391	0.3%	2.4%	14.0%	20.1%	0.0%	4.8%	58.4%
320	Aversboro Elementary	E	KI-5	T	N/A	560	4	24	180	137	1	27	187	0.7%	4.3%	32.1%	24.5%	0.2%	4.8%	33.4%
326	Baileywick Elementary	E	KI-5	T	N/A	456		5	44	170	1	13	223	0.0%	1.1%	9.6%	37.3%	0.2%	2.9%	48.9%
327	Ballentine Elementary	E	KI-5	Y-R	N/A	653	2	7	33	196		15	400	0.3%	1.1%	5.1%	30.0%	0.0%	2.3%	61.3%
325	Banks Road Elementary	E	KI-5	Y-R	N/A	658	3	9	87	135		20	404	0.5%	1.4%	13.2%	20.5%	0.0%	3.0%	61.4%
329	Barwell Elementary	E	KI-5	Y-R	N/A	762	5	9	454	218	2	25	49	0.7%	1.2%	59.6%	28.6%	0.3%	3.3%	6.4%
328	Baucom Elementary	E	KI-5	T	N/A	833	1	53	111	105	1	44	518	0.1%	6.4%	13.3%	12.6%	0.1%	5.3%	62.2%
334	Brassfield Elementary	E	KI-5	Y-R	N/A	750	2	22	56	84		29	557	0.3%	2.9%	7.5%	11.2%	0.0%	3.9%	74.3%
336	Brentwood Elementary	E	KI-5	T	Engineering	404		13	158	186	1	9	37	0.0%	3.2%	39.1%	46.0%	0.2%	2.2%	9.2%
340	Briarcliff Elementary	E	KI-5	T	N/A	562	4	14	85	138		27	294	0.7%	2.5%	15.1%	24.6%	0.0%	4.8%	52.3%
342	Brier Creek Elementary	E	KI-5	Y-R	N/A	783	1	58	195	86		42	401	0.1%	7.4%	24.9%	11.0%	0.0%	5.4%	51.2%
344	Brooks Elementary	E	KI-5	T	Museums	576	5	7	62	120	1	18	363	0.9%	1.2%	10.8%	20.8%	0.2%	3.1%	63.0%
352	Bugg Elementary	E	KI-5	T	Creative Arts & Science	487	4	15	366	34		22	46	0.8%	3.1%	75.2%	7.0%	0.0%	4.5%	9.4%
358	Carpenter Elementary	E	KI-5	Y-R	N/A	728	1	141	84	114		39	349	0.1%	19.4%	11.5%	15.7%	0.0%	5.4%	47.9%
362	Carver Elementary	E	PK-5	MOD	N/A	429	2	2	109	109	1	25	181	0.5%	0.5%	25.4%	25.4%	0.2%	5.8%	42.2%
364	Cary Elementary	E	KI-5	T	N/A	489	2	9	75	111		22	270	0.4%	1.8%	15.3%	22.7%	0.0%	4.5%	55.2%
369	Cedar Fork Elementary	E	KI-5	T	N/A	871	4	410	96	59	2	40	260	0.5%	47.1%	11.0%	6.8%	0.2%	4.6%	29.9%
376	Combs Elementary	E	KI-5	T	Leadership	805	2	62	144	123		38	436	0.2%	7.7%	17.9%	15.3%	0.0%	4.7%	54.2%
380	Conn Elementary	E	KI-5	T	Active Learning and Technology	579	4	13	292	39	1	29	201	0.7%	2.2%	50.4%	6.7%	0.2%	5.0%	34.7%
384	Creech Road Elementary	E	KI-5	T	N/A	489		6	238	141		20	84	0.0%	1.2%	48.7%	28.8%	0.0%	4.1%	17.2%
390	Davis Drive Elementary	E	KI-5	T	N/A	951	6	261	76	117	4	41	446	0.6%	27.4%	8.0%	12.3%	0.4%	4.3%	46.9%
393	Dillard Drive Elementary	E	KI-5	T	N/A	788	2	58	198	156		58	316	0.3%	7.4%	25.1%	19.8%	0.0%	7.4%	40.1%
396	Douglas Elementary	E	KI-5	T	Creative Arts & Science	684	1	22	141	136	2	27	355	0.1%	3.2%	20.6%	19.9%	0.3%	3.9%	51.9%
398	Durant Road Elementary	E	KI-5	Y-R	N/A	974	11	21	213	182		52	495	1.1%	2.2%	21.9%	18.7%	0.0%	5.3%	50.8%
403	East Garner Elementary	E	KI-5	Y-R	N/A	667	21	8	364	174		28	72	3.1%	1.2%	54.6%	26.1%	0.0%	4.2%	10.8%
414	Farmington Woods Elementary	E	KI-5	T	International Baccalaureate PYP	853	2	110	137	144		58	402	0.2%	12.9%	16.1%	16.9%	0.0%	6.8%	47.1%
417	Forest Pines Drive Elementary	E	KI-5	T	N/A	755	2	37	151	139		29	397	0.3%	4.9%	20.0%	18.4%	0.0%	3.8%	52.6%
413	Forestville Road Elementary	E	KI-5	T	N/A	665		10	271	162		40	182	0.0%	1.5%	40.8%	24.4%	0.0%	6.0%	27.4%
415	Fox Road Elementary	E	KI-5	T	N/A	841	3	42	410	253	2	36	95	0.4%	5.0%	48.8%	30.1%	0.2%	4.3%	11.3%
416	Fuller Elementary	E	KI-5	T	Gifted & Talented/AG Basics	529	4	221	163	54		13	74	0.8%	41.8%	30.8%	10.2%	0.0%	2.5%	14.0%
420	Fuquay-Varina Elementary	E	KI-5	T	N/A	734	2	11	133	127		41	420	0.3%	1.5%	18.1%	17.3%	0.0%	5.6%	57.2%
440	Green Elementary	E	KI-5	Y-R	N/A	504	2	4	184	83	9	19	203	0.4%	0.8%	36.5%	16.5%	1.8%	3.8%	40.3%
439	Green Hope Elementary	E	KI-5	T	N/A	839	2	225	110	114		36	352	0.2%	26.8%	13.1%	13.6%	0.0%	4.3%	42.0%
451	Harris Creek Elementary	E	KI-5	Y-R	N/A	842	2	25	280	134		58	343	0.2%	3.0%	33.3%	15.9%	0.0%	6.9%	40.7%
306	Herbert Akins Road Elementary	E	KI-5	Y-R	N/A	766	3	9	121	101		47	485	0.4%	1.2%	15.8%	13.2%	0.0%	6.1%	63.3%
454	Heritage Elementary	E	KI-5	Y-R	N/A	881	2	22	132	56		19	650	0.2%	2.5%	15.0%	6.4%	0.0%	2.2%	73.8%

WCPSS School General Information, 2010-2011

Code	School Name	Level	Grade Span	Calendar	Magnet Program	School Membership 2010-11	American Indian and Alaska Native	Asian	Black or African American	Hispanic or Latino	Native Hawaiian and Other Pacific Islander	Two or More Races	White	Percent American Indian and Alaska Native	Percent Asian	Percent Black or African American	Percent Hispanic or Latino	Native Hawaiian and Other Pacific Islander	Percent Two or More Races	Percent White
443	Highcroft Drive Elementary	E	KI-5	Y-R	N/A	777	1	97	26	37		43	573	0.1%	12.5%	3.3%	4.8%	0.0%	5.5%	73.7%
442	Hilburn Drive Elementary	E	KI-5	T	N/A	481		43	172	90		24	152	0.0%	8.9%	35.8%	18.7%	0.0%	5.0%	31.6%
446	Hodge Road Elementary	E	KI-5	Y-R	N/A	729	2	14	237	365		25	86	0.3%	1.9%	32.5%	50.1%	0.0%	3.4%	11.8%
457	Holly Grove Elementary	E	KI-5	Y-R	N/A	854		18	101	75	2	37	621	0.0%	2.1%	11.8%	8.8%	0.2%	4.3%	72.7%
449	Holly Ridge Elementary	E	KI-5	T	N/A	729	1	21	135	93		38	441	0.1%	2.9%	18.5%	12.8%	0.0%	5.2%	60.5%
447	Holly Springs Elementary	E	KI-5	Y-R	N/A	1071	1	28	134	76	2	34	796	0.1%	2.6%	12.5%	7.1%	0.2%	3.2%	74.3%
448	Hunter Elementary	E	KI-5	T	Gifted & Talented/AG Basics	725	2	52	326	58	1	17	269	0.3%	7.2%	45.0%	8.0%	0.1%	2.3%	37.1%
452	Jeffreys Grove Elementary	E	KI-5	T	N/A	534	3	12	182	69		24	244	0.6%	2.2%	34.1%	12.9%	0.0%	4.5%	45.7%
453	Jones Dairy Elementary	E	KI-5	Y-R	N/A	838	2	16	121	46		32	621	0.2%	1.9%	14.4%	5.5%	0.0%	3.8%	74.1%
456	Joyner Elementary	E	KI-5	T	Center for Spanish Language/IB PYP	666	6	15	149	108	1	21	366	0.9%	2.3%	22.4%	16.2%	0.2%	3.2%	55.0%
460	Kingswood Elementary	E	KI-5	T	N/A	345	3	34	72	95		28	113	0.9%	9.9%	20.9%	27.5%	0.0%	8.1%	32.8%
464	Knightdale Elementary	E	KI-5	T	N/A	576	2	9	235	173	1	27	129	0.3%	1.6%	40.8%	30.0%	0.2%	4.7%	22.4%
468	Lacy Elementary	E	KI-5	T	N/A	850	2	64	125	61		18	580	0.2%	7.5%	14.7%	7.2%	0.0%	2.1%	68.2%
474	Lake Myra Elementary	E	KI-5	Y-R	N/A	548	1	8	198	139		30	172	0.2%	1.5%	36.1%	25.4%	0.0%	5.5%	31.4%
467	Laurel Park Elementary	E	KI-5	Y-R	N/A	935	3	108	73	134		47	570	0.3%	11.6%	7.8%	14.3%	0.0%	5.0%	61.0%
470	Lead Mine Elementary	E	KI-5	T	N/A	482	5	12	145	72		20	228	1.0%	2.5%	30.1%	14.9%	0.0%	4.1%	47.3%
469	Leesville Road Elementary	E	KI-5	T	N/A	904	3	57	220	77		32	515	0.3%	6.3%	24.3%	8.5%	0.0%	3.5%	57.0%
476	Lincoln Heights Elementary	E	KI-5	T	N/A	512	1	6	143	110		21	231	0.2%	1.2%	27.9%	21.5%	0.0%	4.1%	45.1%
480	Lockhart Elementary	E	KI-5	Y-R	N/A	713	2	5	261	192	1	25	227	0.3%	0.7%	36.6%	26.9%	0.1%	3.5%	31.8%
488	Lynn Road Elementary	E	KI-5	T	N/A	601		6	266	98		41	190	0.0%	1.0%	44.3%	16.3%	0.0%	6.8%	31.6%
494	Middle Creek Elementary	E	KI-5	Y-R	N/A	951	4	24	86	136		36	665	0.4%	2.5%	9.0%	14.3%	0.0%	3.8%	69.9%
496	Millbrook Elementary	E	KI-5	T	International Baccalaureate PYP	800		17	377	230		45	131	0.0%	2.1%	47.1%	28.8%	0.0%	5.6%	16.4%
501	Mills Park Elementary	E	KI-5	T	N/A	947	2	252	89	83		48	473	0.2%	26.6%	9.4%	8.8%	0.0%	5.1%	49.9%
504	Morrisville Elementary	E	KI-5	Y-R	N/A	761	1	140	64	37		46	473	0.1%	18.4%	8.4%	4.9%	0.0%	6.0%	62.2%
514	North Forest Pines Elementary	E	KI-5	Y-R	N/A	860	6	23	126	119	1	26	559	0.7%	2.7%	14.7%	13.8%	0.1%	3.0%	65.0%
516	North Ridge Elementary	E	KI-5	T	N/A	753	1	37	142	167		31	375	0.1%	4.9%	18.9%	22.2%	0.0%	4.1%	49.8%
520	Northwoods Elementary	E	KI-5	T	N/A	523	2	68	115	107	1	29	201	0.4%	13.0%	22.0%	20.5%	0.2%	5.5%	38.4%
522	Oak Grove Elementary	E	KI-5	Y-R	N/A	818	4	42	85	71		21	595	0.5%	5.1%	10.4%	8.7%	0.0%	2.6%	72.7%
524	Olds Elementary	E	KI-5	T	N/A	288	1	9	66	16		11	185	0.3%	3.1%	22.9%	5.6%	0.0%	3.8%	64.2%
523	Olive Chapel Elementary	E	KI-5	Y-R	N/A	984	2	43	67	84	2	37	749	0.2%	4.4%	6.8%	8.5%	0.2%	3.8%	76.1%
525	Partnership Elementary	E	KI-5	MOD	N/A	337	3	9	97	35		22	171	0.9%	2.7%	28.8%	10.4%	0.0%	6.5%	50.7%
530	Penny Road Elementary	E	KI-5	T	N/A	625	3	18	102	87		31	384	0.5%	2.9%	16.3%	13.9%	0.0%	5.0%	61.4%
531	Pleasant Union Elementary	E	KI-5	Y-R	N/A	660	2	10	72	35	1	29	511	0.3%	1.5%	10.9%	5.3%	0.2%	4.4%	77.4%
532	Poe Elementary	E	PK-5	T	Montessori	361	1	10	125	80		19	126	0.3%	2.8%	34.6%	22.2%	0.0%	5.3%	34.9%
536	Powell Elementary	E	KI-5	T	Gifted & Talented	420	3	15	225	28		22	127	0.7%	3.6%	53.6%	6.7%	0.0%	5.2%	30.2%
540	Rand Road Elementary	E	KI-5	Y-R	N/A	572	4	5	91	65		28	379	0.7%	0.9%	15.9%	11.4%	0.0%	4.9%	66.3%
542	Reedy Creek Elementary	E	KI-5	T	N/A	556	1	61	152	74		27	241	0.2%	11.0%	27.3%	13.3%	0.0%	4.9%	43.3%
302	River Bend Elementary	E	KI-5	Y-R	N/A	644	13	34	217	236	2	39	103	2.0%	5.3%	33.7%	36.6%	0.3%	6.1%	16.0%
544	Rolesville Elementary	E	PK-5	T	N/A	643	4	29	185	105	1	30	289	0.6%	4.5%	28.8%	16.3%	0.2%	4.7%	44.9%

WCPSS School General Information, 2010-2011

Code	School Name	Level	Grade Span	Calendar	Magnet Program	School Membership 2010-11	American Indian and Alaska Native	Asian	Black or African American	Hispanic or Latino	Native Hawaiian and Other Pacific Islander	Two or More Races	White	Percent American Indian and Alaska Native	Percent Asian	Percent Black or African American	Percent Hispanic or Latino	Native Hawaiian and Other Pacific Islander	Percent Two or More Races	Percent White
548	Root Elementary	E	KI-5	T	N/A	482	2	3	151	45		22	259	0.4%	0.6%	31.3%	9.3%	0.0%	4.6%	53.7%
550	Salem Elementary	E	KI-5	Y-R	N/A	933	1	114	44	151		40	583	0.1%	12.2%	4.7%	16.2%	0.0%	4.3%	62.5%
554	Sanford Creek Elementary	E	KI-5	Y-R	N/A	640		22	111	57	1	41	408	0.0%	3.4%	17.3%	8.9%	0.2%	6.4%	63.8%
560	Smith Elementary	E	PK-5	T	International Baccalaureate PYP	560		3	275	175		22	85	0.0%	0.5%	49.1%	31.3%	0.0%	3.9%	15.2%
564	Stough Elementary	E	KI-5	T	N/A	576	4	30	177	121		36	208	0.7%	5.2%	30.7%	21.0%	0.0%	6.3%	36.1%
568	Swift Creek Elementary	E	KI-5	T	N/A	514	2	23	98	80		22	289	0.4%	4.5%	19.1%	15.6%	0.0%	4.3%	56.2%
569	Sycamore Creek Elementary	E	KI-5	Y-R	N/A	995	3	46	84	87		39	736	0.3%	4.6%	8.4%	8.7%	0.0%	3.9%	74.0%
570	Timber Drive Elementary	E	KI-5	Y-R	N/A	766	3	10	246	134	1	48	324	0.4%	1.3%	32.1%	17.5%	0.1%	6.3%	42.3%
571	Turner Creek Elementary	E	KI-5	Y-R	N/A	951	4	121	100	71	1	34	620	0.4%	12.7%	10.5%	7.5%	0.1%	3.6%	65.2%
572	Underwood Elementary	E	KI-5	T	Gifted & Talented	469	1	18	82	61		25	282	0.2%	3.8%	17.5%	13.0%	0.0%	5.3%	60.1%
576	Vance Elementary	E	KI-5	Y-R	N/A	602	5	12	86	113		20	366	0.8%	2.0%	14.3%	18.8%	0.0%	3.3%	60.8%
580	Vandora Springs Elementary	E	KI-5	T	N/A	553	1	5	218	95		31	203	0.2%	0.9%	39.4%	17.2%	0.0%	5.6%	36.7%
584	Wake Forest Elementary	E	KI-5	T	N/A	647	3	15	125	57	1	35	411	0.5%	2.3%	19.3%	8.8%	0.2%	5.4%	63.5%
593	Wakefield Elementary	E	KI-5	Y-R	N/A	762	4	50	155	150	1	27	375	0.5%	6.6%	20.3%	19.7%	0.1%	3.5%	49.2%
597	Wakelon Elementary	E	KI-5	T	N/A	524	3	4	221	128		20	148	0.6%	0.8%	42.2%	24.4%	0.0%	3.8%	28.2%
596	Washington Elementary	E	KI-5	T	Gifted & Talented	549	3	146	137	65	2	13	183	0.5%	26.6%	25.0%	11.8%	0.4%	2.4%	33.3%
598	Weatherstone Elementary	E	KI-5	T	N/A	641	1	68	130	103		25	314	0.2%	10.6%	20.3%	16.1%	0.0%	3.9%	49.0%
600	Wendell Elementary	E	KI-5	T	Creative Arts & Science	436	7	8	122	99		28	172	1.6%	1.8%	28.0%	22.7%	0.0%	6.4%	39.4%
606	West Lake Elementary	E	KI-5	Y-R	N/A	827	2	22	59	163		37	544	0.2%	2.7%	7.1%	19.7%	0.0%	4.5%	65.8%
616	Wilburn Elementary	E	KI-5	Y-R	N/A	629	2	32	298	145	1	35	116	0.3%	5.1%	47.4%	23.1%	0.2%	5.6%	18.4%
618	Wildwood Forest Elementary	E	KI-5	T	N/A	736	4	50	309	92		32	249	0.5%	6.8%	42.0%	12.5%	0.0%	4.3%	33.8%
620	Wiley Elementary	E	KI-5	T	International Studies	465		32	105	53		31	244	0.0%	6.9%	22.6%	11.4%	0.0%	6.7%	52.5%
624	Willow Springs Elementary	E	KI-5	Y-R	N/A	911	4	8	69	145	2	54	629	0.4%	0.9%	7.6%	15.9%	0.2%	5.9%	69.0%
626	Yates Mill Elementary	E	KI-5	T	N/A	555	2	10	58	151	1	19	314	0.4%	1.8%	10.5%	27.2%	0.2%	3.4%	56.6%
628	York Elementary	E	KI-5	T	N/A	432	1	5	127	95	2	17	185	0.2%	1.2%	29.4%	22.0%	0.5%	3.9%	42.8%
632	Zebulon Elementary	E	KI-5	T	Gifted & Talented	488	3	3	131	124		26	201	0.6%	0.6%	26.8%	25.4%	0.0%	5.3%	41.2%
312	Apex Middle	M	06-8	T	N/A	1054	5	39	129	129		56	696	0.5%	3.7%	12.2%	12.2%	0.0%	5.3%	66.0%
356	Carnage Middle	M	06-8	T	Gifted & Talented/AG Basics	1131	5	233	469	136	1	52	235	0.4%	20.6%	41.5%	12.0%	0.1%	4.6%	20.8%
360	Carroll Middle	M	06-8	T	N/A	692	3	15	270	112		37	255	0.4%	2.2%	39.0%	16.2%	0.0%	5.3%	36.8%
370	Centennial Campus Middle	M	06-8	MOD	University Connections and Leadership	601	1	25	209	105	2	31	228	0.2%	4.2%	34.8%	17.5%	0.3%	5.2%	37.9%
388	Daniels Middle	M	06-8	T	N/A	1087	4	50	262	134	1	38	598	0.4%	4.6%	24.1%	12.3%	0.1%	3.5%	55.0%
391	Davis Drive Middle	M	06-8	T	N/A	1186	2	207	125	106	4	39	703	0.2%	17.5%	10.5%	8.9%	0.3%	3.3%	59.3%
394	Dillard Drive Middle	M	06-8	T	N/A	1170	3	42	295	172		44	614	0.3%	3.6%	25.2%	14.7%	0.0%	3.8%	52.5%
399	Durant Road Middle	M	06-8	Y-R	N/A	1371	9	52	373	164		62	711	0.7%	3.8%	27.2%	12.0%	0.0%	4.5%	51.9%
402	East Cary Middle	M	06-8	Y-R	N/A	810	2	103	112	111		51	431	0.2%	12.7%	13.8%	13.7%	0.0%	6.3%	53.2%

WCPSS School General Information, 2010-2011

Code	School Name	Level	Grade Span	Calendar	Magnet Program	School Membership 2010-11	American Indian and Alaska Native	Asian	Black or African American	Hispanic or Latino	Native Hawaiian and Other Pacific Islander	Two or More Races	White	Percent American Indian and Alaska Native	Percent Asian	Percent Black or African American	Percent Hispanic or Latino	Native Hawaiian and Other Pacific Islander	Percent Two or More Races	Percent White
404	East Garner Middle	M	06-8	T	International Baccalaureate - Middle	1157	10	12	584	222	8	62	259	0.9%	1.0%	50.5%	19.2%	0.7%	5.4%	22.4%
408	East Millbrook Middle	M	06-8	T	International Baccalaureate-Middle/Creative Arts	1163	4	41	619	204	1	70	224	0.3%	3.5%	53.2%	17.5%	0.1%	6.0%	19.3%
410	East Wake Middle	M	06-8	Y-R	N/A	970	6	14	383	271		39	257	0.6%	1.4%	39.5%	27.9%	0.0%	4.0%	26.5%
424	Fuquay-Varina Middle	M	06-8	T	N/A	894	5	8	199	153		37	492	0.6%	0.9%	22.3%	17.1%	0.0%	4.1%	55.0%
444	Heritage Middle	M	06-8	Y-R	N/A	1392	16	36	263	69	1	58	949	1.1%	2.6%	18.9%	5.0%	0.1%	4.2%	68.2%
458	Holly Grove Middle	M		Y-R	N/A	947	1	8	138	159	1	41	599	0.1%	0.8%	14.6%	16.8%	0.1%	4.3%	63.3%
450	Holly Ridge Middle	M	06-8	T	N/A	1017	5	21	198	134	1	50	608	0.5%	2.1%	19.5%	13.2%	0.1%	4.9%	59.8%
471	Leesville Road Middle	M	06-8	T	N/A	1344	7	63	369	169	2	65	669	0.5%	4.7%	27.5%	12.6%	0.1%	4.8%	49.8%
472	Ligon Middle	M	06-8	T	Gifted & Talented/AG Basics	1099	3	128	396	61	1	41	469	0.3%	11.6%	36.0%	5.6%	0.1%	3.7%	42.7%
484	Lufkin Road Middle	M	06-8	Y-R	N/A	1044	5	43	146	70	2	30	748	0.5%	4.1%	14.0%	6.7%	0.2%	2.9%	71.6%
492	Martin Middle	M	06-8	T	Gifted & Talented	1020	7	84	204	106		56	563	0.7%	8.2%	20.0%	10.4%	0.0%	5.5%	55.2%
502	Mills Park Middle	M		T	N/A	1101	4	178	163	89		46	621	0.4%	16.2%	14.8%	8.1%	0.0%	4.2%	56.4%
506	Moore Square Middle	M	06-8	MOD	Museums	506		5	245	73		19	164	0.0%	1.0%	48.4%	14.4%	0.0%	3.8%	32.4%
512	North Garner Middle	M	06-8	Y-R	N/A	1076	7	11	378	174		44	462	0.7%	1.0%	35.1%	16.2%	0.0%	4.1%	42.9%
400	Reedy Creek Middle	M	06-8	T	N/A	888	3	62	197	157	1	62	406	0.3%	7.0%	22.2%	17.7%	0.1%	7.0%	45.7%
551	Salem Middle	M	06-8	Y-R	N/A	1096	2	123	129	105	3	59	675	0.2%	11.2%	11.8%	9.6%	0.3%	5.4%	61.6%
592	Wake Forest-Rolesville Middle	M	06-8	T	N/A	1151	9	57	343	172	3	56	511	0.8%	5.0%	29.8%	14.9%	0.3%	4.9%	44.4%
594	Wakefield Middle	M	06-8	T	N/A	1201	3	70	236	124		35	733	0.2%	5.8%	19.7%	10.3%	0.0%	2.9%	61.0%
601	Wendell Middle	M	06-8	T	N/A	945	5	13	334	194	2	63	334	0.5%	1.4%	35.3%	20.5%	0.2%	6.7%	35.3%
604	West Cary Middle	M	06-8	T	N/A	702	3	121	120	59	4	35	360	0.4%	17.2%	17.1%	8.4%	0.6%	5.0%	51.3%
607	West Lake Middle	M	06-8	Y-R	N/A	1251	12	26	191	150	1	55	816	1.0%	2.1%	15.3%	12.0%	0.1%	4.4%	65.2%
608	West Millbrook Middle	M	06-8	T	N/A	966	2	30	244	157		32	501	0.2%	3.1%	25.3%	16.3%	0.0%	3.3%	51.9%
636	Zebulon Middle	M	06-8	T	Gifted & Talented	577	7	5	236	106		29	194	1.2%	0.9%	40.9%	18.4%	0.0%	5.0%	33.6%
316	Apex High	S	09-12	T	N/A	2341	11	131	163	199	1	91	1,745	0.5%	5.6%	7.0%	8.5%	0.0%	3.9%	74.5%
318	Athens Drive High	S	09-12	T	N/A	1927	11	117	467	220	3	88	1,021	0.6%	6.1%	24.2%	11.4%	0.2%	4.6%	53.0%
348	Broughton High	S	09-12	T	N/A	2174	12	92	637	215	4	92	1,122	0.6%	4.2%	29.3%	9.9%	0.2%	4.2%	51.6%
368	Cary High	S	09-12	T	N/A	2250	15	126	387	379	2	110	1,231	0.7%	5.6%	17.2%	16.8%	0.1%	4.9%	54.7%
700	East Wake High School of Health Science	S	09-12	T	N/A	369	4	2	140	56	4	7	156	1.1%	0.5%	37.9%	15.2%	1.1%	1.9%	42.3%
702	East Wake School of Arts, Education and Global Studies	S	09-12	T	N/A	401	2	3	163	75		12	146	0.5%	0.7%	40.6%	18.7%	0.0%	3.0%	36.4%
703	East Wake School of Engineering Systems	S	09-12	T	N/A	374	2	1	116	55		12	188	0.5%	0.3%	31.0%	14.7%	0.0%	3.2%	50.3%
701	Integrated Technology	S	09-12	T	N/A	326	1	3	158	72	1	11	80	0.3%	0.9%	48.5%	22.1%	0.3%	3.4%	24.5%

WCPSS School General Information, 2010-2011

Code	School Name	Level	Grade Span	Calendar	Magnet Program	School Membership 2010-11	American Indian and Alaska Native	Asian	Black or African American	Hispanic or Latino	Native Hawaiian and Other Pacific Islander	Two or More Races	White	Percent American Indian and Alaska Native	Percent Asian	Percent Black or African American	Percent Hispanic or Latino	Native Hawaiian and Other Pacific Islander	Percent Two or More Races	Percent White
412	Enloe High	S	09-12	T	GT/IB Center for Humanities, Sciences & the Arts	2669	4	322	1,033	252	2	139	917	0.1%	12.1%	38.7%	9.4%	0.1%	5.2%	34.4%
428	Fuquay-Varina High	S	09-12	T	N/A	1968	10	22	331	293	3	74	1,235	0.5%	1.1%	16.8%	14.9%	0.2%	3.8%	62.8%
436	Garner High	S	09-12	T	International Baccalaureate - High	2297	11	30	891	381		118	866	0.5%	1.3%	38.8%	16.6%	0.0%	5.1%	37.7%
441	Green Hope High	S	09-12	T	N/A	2029	3	356	104	112	5	71	1,378	0.1%	17.5%	5.1%	5.5%	0.2%	3.5%	67.9%
445	Heritage High	S		T	N/A	814	4	18	227	138	1	35	391	0.5%	2.2%	27.9%	17.0%	0.1%	4.3%	48.0%
455	Holly Springs High	S	09-12	T	N/A	2000	12	50	342	240	2	82	1,272	0.6%	2.5%	17.1%	12.0%	0.1%	4.1%	63.6%
466	Knightdale High	S	09-12	T	N/A	1763	9	38	792	322	3	96	503	0.5%	2.2%	44.9%	18.3%	0.2%	5.4%	28.5%
473	Leesville Road High	S	09-12	T	N/A	2408	10	136	484	219	2	119	1,438	0.4%	5.6%	20.1%	9.1%	0.1%	4.9%	59.7%
495	Middle Creek High	S	09-12	T	N/A	1814	13	36	466	258	2	87	952	0.7%	2.0%	25.7%	14.2%	0.1%	4.8%	52.5%
500	Millbrook High	S	09-12	T	International Baccalaureate - High	2443	9	103	801	355	4	103	1,068	0.4%	4.2%	32.8%	14.5%	0.2%	4.2%	43.7%
526	Panther Creek High	S	09-12	T	N/A	2348	7	370	328	207		121	1,315	0.3%	15.8%	14.0%	8.8%	0.0%	5.2%	56.0%
552	Sanderson High	S	09-12	T	N/A	1905	5	68	477	222	2	79	1,052	0.3%	3.6%	25.0%	11.7%	0.1%	4.1%	55.2%
562	Southeast Raleigh High	S	09-12	MOD	Center for Leadership and Technology	1663	9	23	1,155	154		93	229	0.5%	1.4%	69.5%	9.3%	0.0%	5.6%	13.8%
583	Wake Early College of Health and Sciences	S	09-12	WECHS	Early College	237		25	83	26	1	13	89	0.0%	10.5%	35.0%	11.0%	0.4%	5.5%	37.6%
588	Wake Forest-Rolesville High	S	09-12	T	N/A	2077	16	38	447	211	4	98	1,263	0.8%	1.8%	21.5%	10.2%	0.2%	4.7%	60.8%
595	Wakefield High	S	09-12	T	N/A	2573	12	126	711	359	4	89	1,272	0.5%	4.9%	27.6%	14.0%	0.2%	3.5%	49.4%
324	Longview School	S/O	06-12	T	N/A	114			94	4		6	10	0.0%	0.0%	82.5%	3.5%	0.0%	5.3%	8.8%
528	Mary E. Phillips High School	S/O	09-12	T	N/A	166			142	11		5	8	0.0%	0.0%	85.5%	6.6%	0.0%	3.0%	4.8%
438	River Oaks Middle School	S/O	06-8	T	N/A	36		1	17	9			9	0.0%	2.8%	47.2%	25.0%	0.0%	0.0%	25.0%
508	Mount Vernon School	S/O	KI-8	T	N/A	95	1		55	11	1	5	22	1.1%	0.0%	57.9%	11.6%	1.1%	5.3%	23.2%
TOTAL						143,289	638	8,644	35,494	20,909	147	6,471	70,986	0.4%	6.0%	24.8%	14.6%	0.1%	4.5%	49.5%