
IV.a.

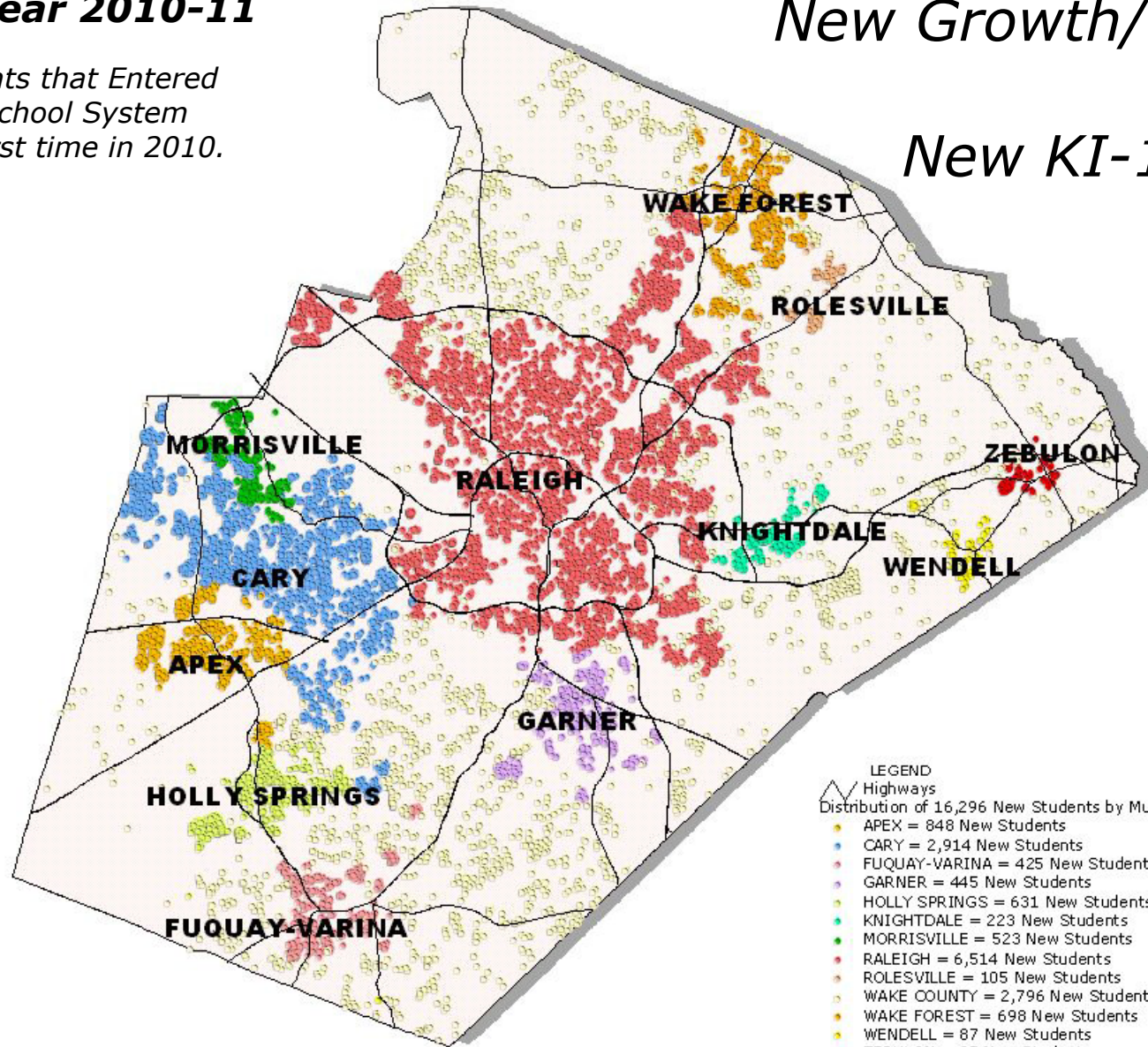
Growth and New Students

New Students* in WCPSS

School Year 2010-11

*Students that Entered the School System for the first time in 2010.

New Growth/Distribution of 16,296 New KI-12 Students by Place of Residence



- LEGEND
Highways
Distribution of 16,296 New Students by Municipal Residence, 2010
- APEX = 848 New Students
 - CARY = 2,914 New Students
 - FUQUAY-VARINA = 425 New Students
 - GARNER = 445 New Students
 - HOLLY SPRINGS = 631 New Students
 - KNIGHTDALE = 223 New Students
 - MORRISVILLE = 523 New Students
 - RALEIGH = 6,514 New Students
 - ROLESVILLE = 105 New Students
 - WAKE COUNTY = 2,796 New Students
 - WAKE FOREST = 698 New Students
 - WENDELL = 87 New Students
 - ZEBULON = 87 New Students

NEW STUDENTS

Annual Increase

- In 2010-11 school year, 16,227 new students entered WCPSS for the first time, with the annual net gain of 3,690 students. Of the new students, 77% are in elementary schools (with majority being at the kindergarten level), 10% are in middle schools, and 13% are in high schools.

Source: WCPSS PMR and Market Share Reports

Distribution by Place of Residence

- New student distribution by their place of residence is very similar to last year's pattern. Again, about 40 percent of students live within Raleigh city limits, and 17 percent within Wake County unincorporated areas. Cary is home to 18 percent students, and about 5% live within Apex city limits. There are about 4% of students in each Holly Springs and Wake Forest, while Morrisville, Fuquay-Varina, and Garner are each home to about 3% of student population. Knightdale has about 1.4% of share. Finally, Wendell, Rolesville, and Zebulon are home to less than 1% each.

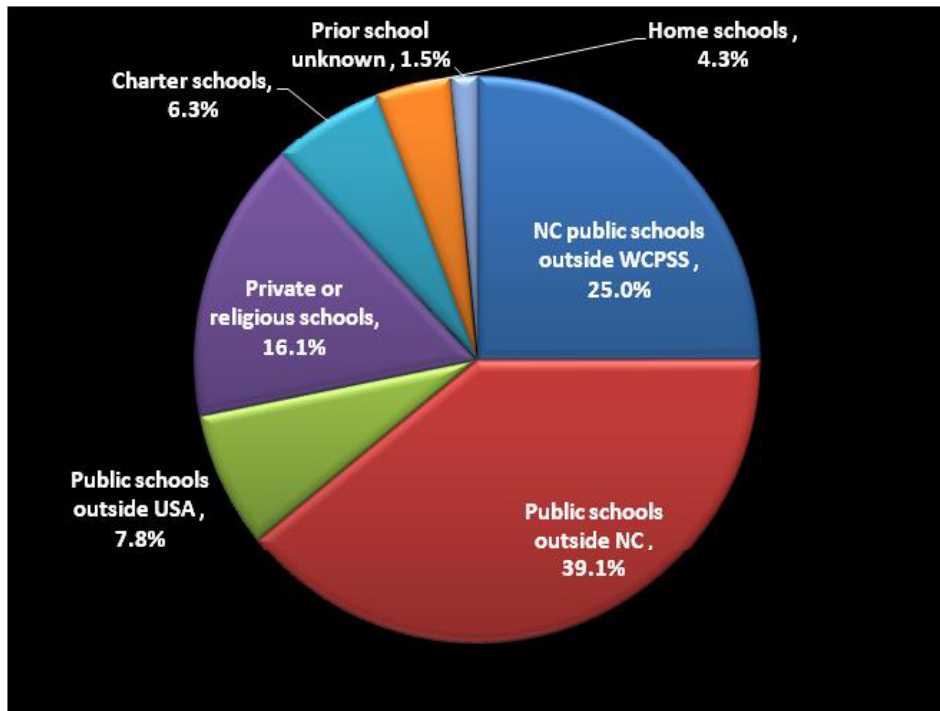
Source: WCPSS, GIS_Genasys_Students09, October 2010

Market Share

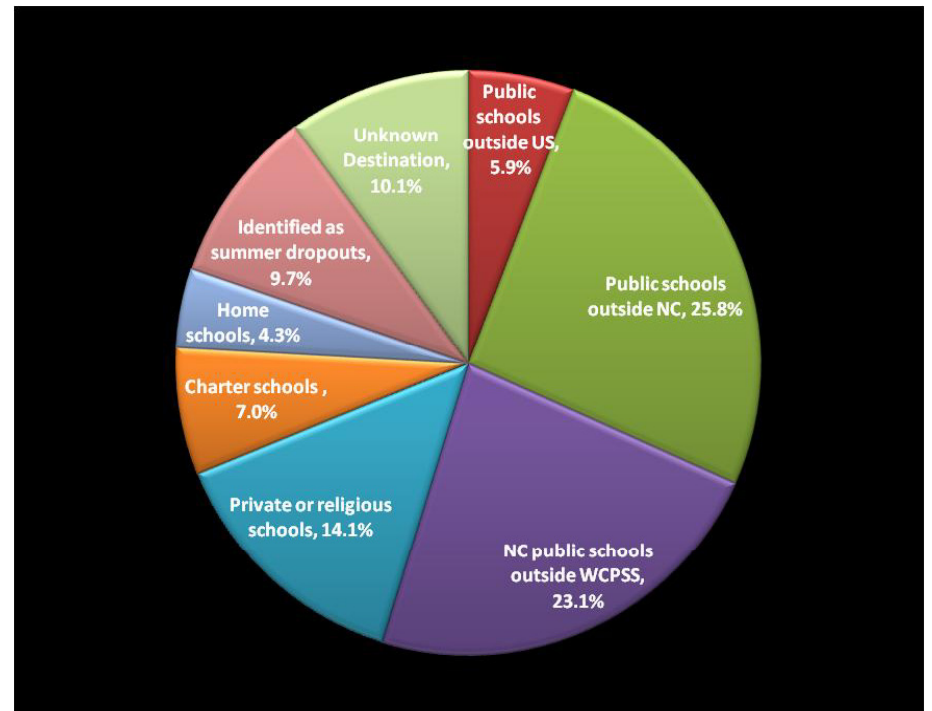
Enrollment growth in WCPSS results from a complex pattern of children being enrolled or withdrawn by their parents, both prior to the start of a school year and during the school year. While some students leave WCPSS each year to enter home, charter or private schools or move out of Wake County, many more students enter the school system resulting in the rising rate of growth.

The following graphs show the sources of **6,863** new students who entered the school system in grades 1-12 prior to the 20th day of the 2010-2011 school year, and the places of destination of **5,863** students who completed 2009-2010 and did not return in 2010-2011.

Distribution of 6,863 new students who entered the school system in grades 1-12 prior to the 20th day of the 2010-2011



Distribution of 5,863 students who completed 2009-2010 and did not return in 2010-2011.

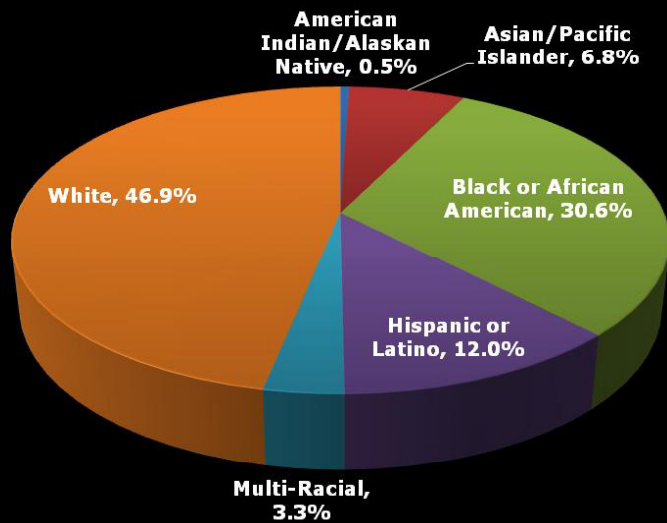


Source: WCPSS PMR and Market Share Reports

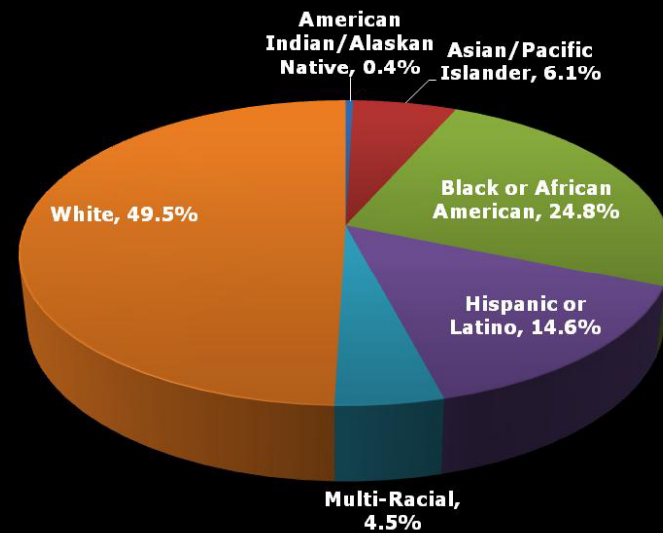
New Students by Race/Ethnicity

While WCPSS tries to keep up with enrollment growth, it also must recognize student diversity in terms of ethnicity. While White students comprise 49.5% of students in 2010-2011, they comprise 46.9% of new students entering grades 1-12. Conversely, while Hispanic students comprised 14.6% of WCPSS students, they comprise 12.0% of new students in grades 1-12. Of total Asian (6.1%) and Multi-racial (4.5%) population, new students entering grades 1-12 represent 6.8% and 3.3% of total membership, respectively. While the 2010-11 WCPSS percentage of Black students comprise 24.8%, they comprise 30.6% of the students entering the school system in grades 1-12.

Distribution of New Students entering the WCPSS for the first time in 2010-11, by Race/Ethnicity



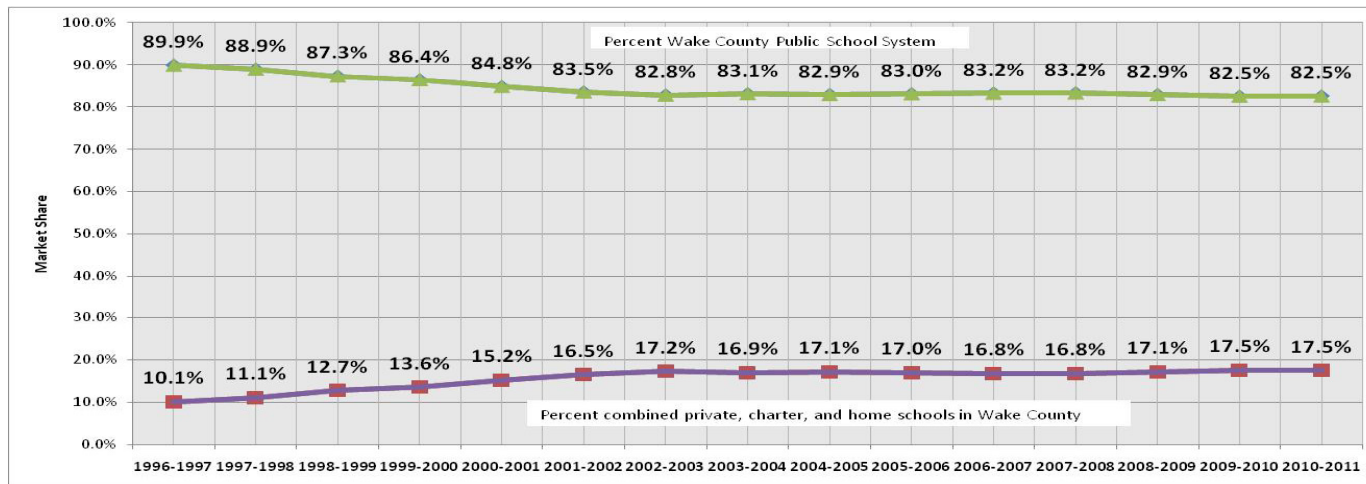
Distribution of 2010-11 WCPSS Student Membership by Race/Ethnicity



Source: WCPSS PMR and Market Share Reports

School Systems in Wake County Public, Private, Charter and Home Schools

Enrollment	1997-1998	1998-1999	1999-2000	2000-2001	2001-2002	2002-2003	2003-2004	2004-2005	2005-2006	2006-2007	2007-2008	2008-2009	2009-2010	2010-2011
Private	8,968	9,826	10,255	12,006	12,615	13,267	12,951	13,375	13,325	14,021	14,696	15,123	15,689	16,084
Home	1,663	1,990	2,457	3,131	4,490	5,042	5,374	5,801	6,361	6,516	7,059	7,571	7,890	8,033
Charter (DPI)	508	1,605	2,196	2,398	2,964	3,432	3,896	4,400	4,926	5,319	5,209	5,776	6,090	6,233
Total	11,139	13,421	14,908	17,535	20,069	21,741	22,221	23,576	24,612	25,856	26,964	28,470	29,669	30,350
Annual Increase														
Private	766	858	429	1,751	609	652	-316	424	-50	696	675	427	566	395
Home	234	327	467	674	1,359	552	332	427	560	155	543	512	319	143
Charter (DPI)		1,097	591	202	566	468	464	504	526	393	-110	567	314	143
Total	1,508	2,282	1,487	2,627	2,534	1,672	480	1,355	1,036	1,244	1,108	1,506	1,199	681
Annual Increase %														
Private	9.3%	9.6%	4.4%	17.1%	5.1%	5.2%	-2.4%	3.3%	-0.4%	5.2%	4.8%	2.9%	3.7%	2.5%
Home	16.4%	19.7%	23.5%	27.4%	43.4%	12.3%	6.6%	7.9%	9.7%	2.4%	8.3%	7.3%	4.2%	1.8%
Charter (DPI)		215.9%	36.8%	9.2%	23.6%	15.8%	13.5%	12.9%	12.0%	8.0%	-2.1%	10.9%	5.4%	2.3%
Total	15.7%	20.5%	11.1%	17.6%	14.5%	8.3%	2.2%	6.1%	4.4%	5.1%	4.3%	5.6%	4.2%	2.3%
All Systems	1997-1998	1998-1999	1999-2000	2000-2001	2001-2002	2002-2003	2003-2004	2004-2005	2005-2006	2006-2007	2007-2008	2008-2009	2009-2010	2010-2011
WCPSS Enrollment	89,441	91,911	94,850	97,583	101,397	104,373	108,970	114,068	120,504	128,072	134,002	137,706	139,599	143,289
WCPSS Enrollment Annual Increase %	4.7%	2.8%	3.2%	2.9%	3.9%	2.9%	4.4%	4.7%	5.6%	6.3%	4.6%	2.8%	1.4%	2.6%
Total Enrollment Other Systems	11,139	13,421	14,908	17,535	20,069	21,741	22,221	23,576	24,612	25,856	26,964	28,470	29,669	30,350
WCPSS + Other School Systems	100,580	105,332	109,758	115,118	121,466	126,114	131,191	137,644	145,116	153,928	160,966	166,176	169,268	173,639
Annual Market Share														
Percent Wake County Public School System	88.9%	87.3%	86.4%	84.8%	83.5%	82.8%	83.1%	82.9%	83.0%	83.2%	83.2%	82.9%	82.5%	82.5%
Percent combined private, charter, and home schools in Wake County	11.1%	12.7%	13.6%	15.2%	16.5%	17.2%	16.9%	17.1%	17.0%	16.8%	16.8%	17.1%	17.5%	17.5%



**Market Share
2010-11
WCPSS
82.5%**

**Private, Charter,
Home Schools
17.5%**

Private Schools: <http://www.ncdnp.org/hhh500.aspx>
Home Schools: <http://www.ncdnp.org/homeschool2.aspx>
Charter (DPI): <http://www.ncpublicschools.org/charterschools/schools/>
WCPSS Schools: Technology Services, 20th-Day MLD Reports, Month 1