



III.

Quick Facts by Educational Level

III. Quick Facts by Educational Level

Table of Contents

III. QUICK FACTS BY EDUCATIONAL LEVEL

Summary by Educational Levels, 2010-11	35
Elementary Schools	
Location and Calendar Maps	36-37
Table	38-41
Middle Schools	
Location and Calendar Maps	42-43
Table	44-45
High Schools	
Location and Calendar Maps	46-47
Table	48-49
Special/Optional Schools	
Location and Calendar Maps	50-51
Table	52
Data Sources	53
Quick Facts Website Information	54

Summary by Educational Level

2009-10 District Summary: 143,289 students are enrolled in 163 schools. 32.4 percent of students are participating in the Free and Reduced-Price Lunch Program (F&R). Of 7.9 percent of students identified with Limited English Proficiency (LEP), 4.3 percent are enrolled in English as a Second Language Program (ESL). The overall campus capacity is for 158,795 students (including 1,161 temporary classrooms), with crowding percent of 90.2 percent.

Summaries by Level:

Table 1. 2010-11 Elementary Schools. 69,069 students are enrolled in 103 elementary schools. 34.9 percent of students are participating in the Free and Reduced-Price Lunch Program (F&R). Of 11.1 percent of students identified with Limited English Proficiency (LEP), 6.2 percent are enrolled in English as a Second Language Program (ESL). The overall campus capacity is for 76,851 students (including 602 temporary classrooms), with crowding percent of 89.9 percent.

Table 2. 2010-11 Middle Schools. 32,609 students are enrolled in 32 middle schools. 33.6 percent of students are participating in the Free and Reduced-Price Lunch Program (F&R). Of 5.6 percent of students identified with Limited English Proficiency (LEP), 2.5 percent are enrolled in English as a Second Language Program (ESL). The overall campus capacity is for 37,780 students (including 190 temporary classrooms), with crowding percent of 86.3 percent.

Table 3. 2010-11 High Schools. 41,170 students are enrolled in 24 high schools. 26.8 percent of students are participating in the Free and Reduced-Price Lunch Program (F&R). Of 4.6 percent of students identified with Limited English Proficiency (LEP), 2.4 percent are enrolled in English as a Second Language Program (ESL). The overall campus capacity is for 43,780 students (including 368 temporary classrooms), with crowding percent of 94.0 percent.

Table 4. 2010-11 Special/Optional Schools. 384 students are enrolled in 4 special/optional schools. 75.7 percent of students are participating in the Free and Reduced-Price Lunch Program (F&R). Of 2.7 percent of students identified with Limited English Proficiency (LEP), 0.5 percent are enrolled in the English as a Second Language Program (ESL). The overall campus capacity is for 384 students (including 1 temporary classroom), with crowding percent of 107.0 percent.

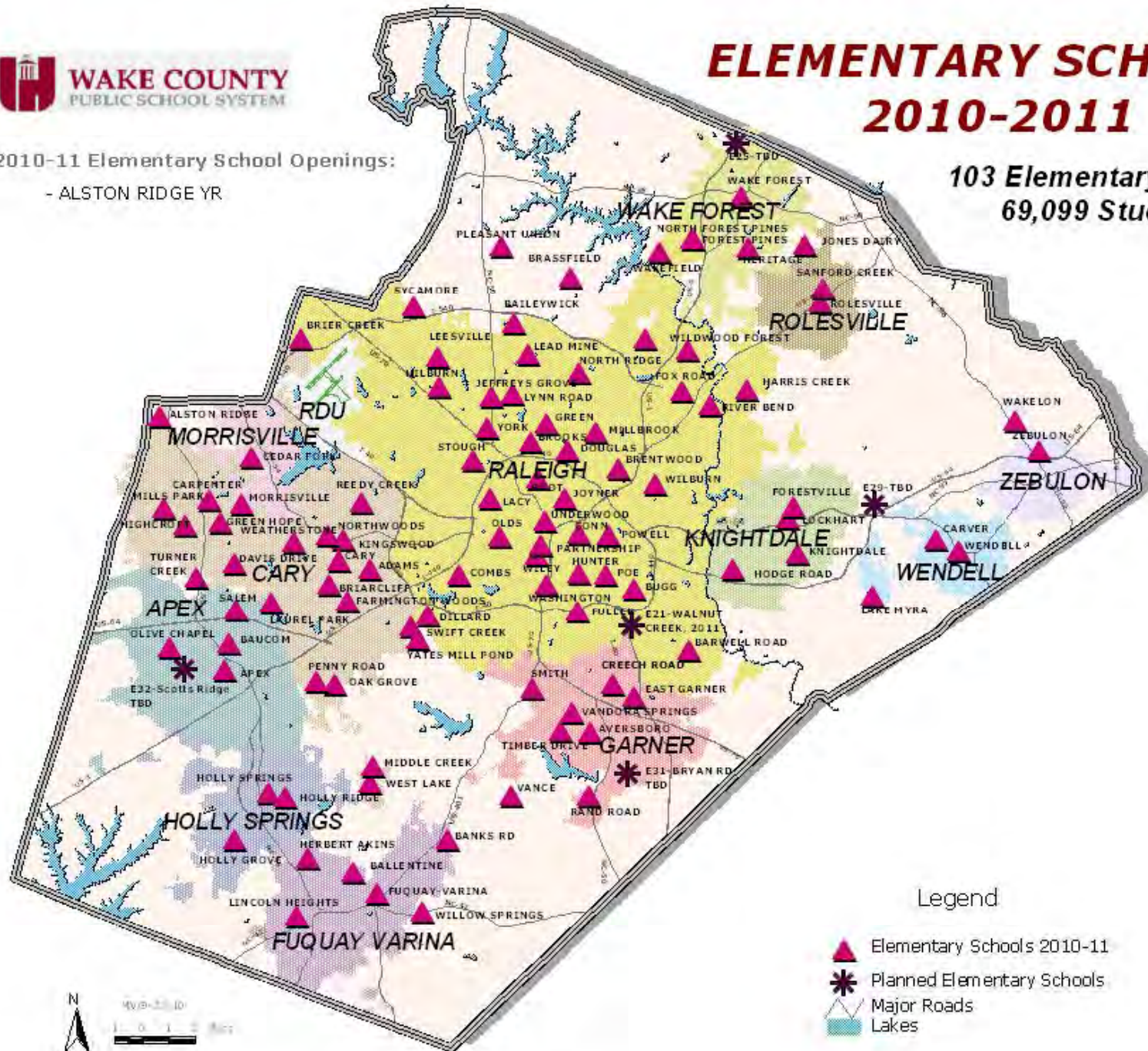


ELEMENTARY SCHOOLS 2010-2011

2010-11 Elementary School Openings:

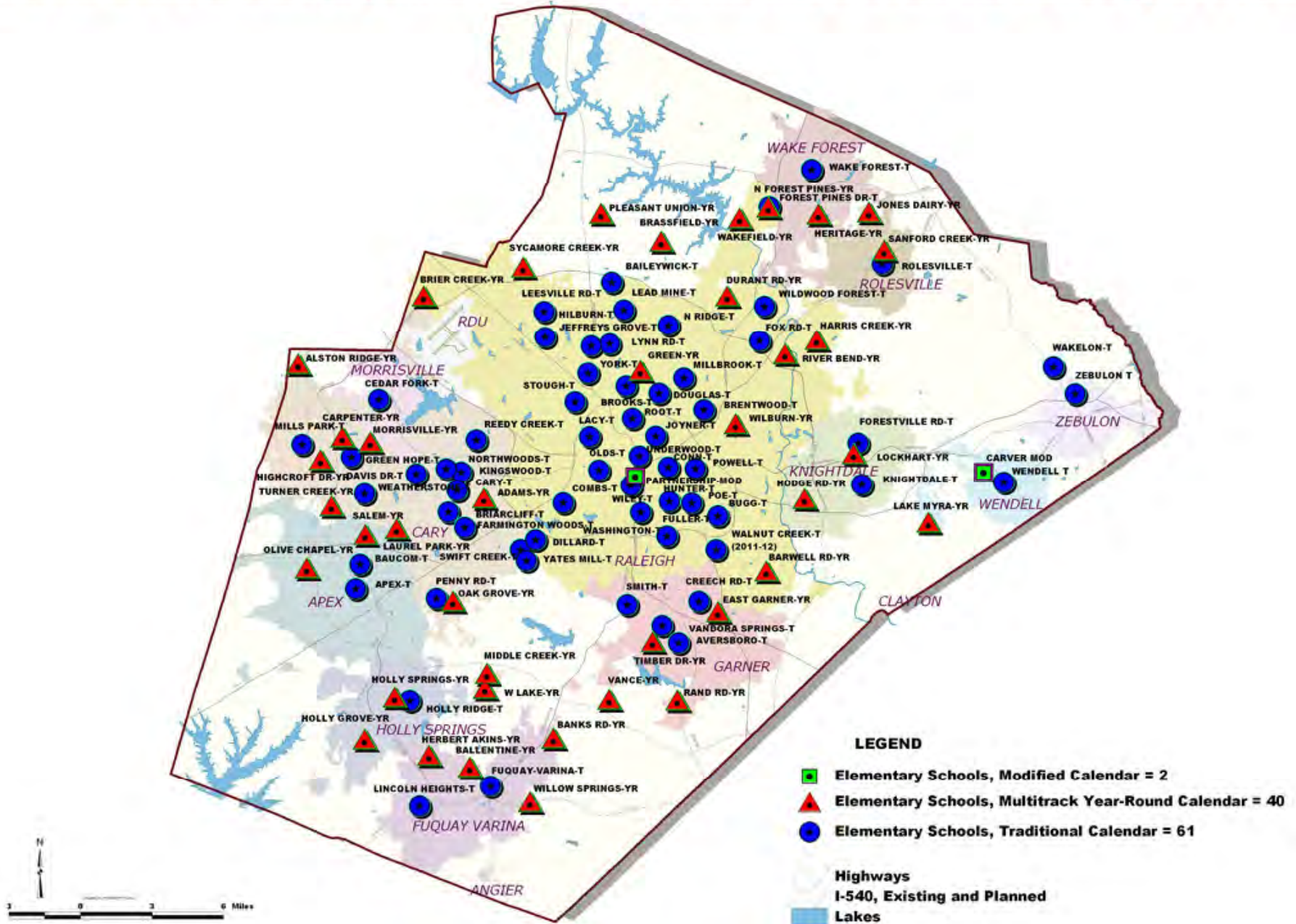
- ALSTON RIDGE YR

103 Elementary Schools
69,099 Students



Elementary Schools By Calendar

Data Set: Traditional, Multitrack Year-Round and Modified Calendars, 2010-11



Wake County Public School System 2010-11 Elementary School Information



Table 1. 2010-11 Elementary Schools. 69,069 students are enrolled in 103 elementary schools. 34.9 percent of students are participating in the Free and Reduced-Price Lunch Program (F&R). Of 11.1 percent of students identified with Limited English Proficiency (LEP), 6.2 percent are enrolled in English as a Second Language Program (ESL). The overall campus capacity is for 76,851 students (including 602 temporary classrooms), with crowding percent of 89.9 percent.

Elementary Schools, 2010-11	Total Temporary Classrooms	Annual School Campus Capacity	20th Day Membership	Annual School Campus Percent Crowding	Percent of LEP* Students	Percent of ESL* Students	Percent of F&R* Students	Percent Reading EOG Test for Grades 3-5, Level I and II Performance (2009-10)
Adams Elementary	8	742	806	108.6%	16.1%	8.1%	33.5%	14.4%
Alston Ridge Elementary	0	1078	460	42.7%	6.5%	4.3%	12.2%	N/A
Apex Elementary	4	686	670	97.7%	8.5%	5.4%	34.0%	16.5%
Aversboro Elementary	0	561	560	99.8%	13.8%	3.4%	59.3%	37.7%
Baileywick Elementary	0	467	456	97.6%	26.3%	7.9%	43.0%	22.8%
Ballentine Elementary	4	803	653	81.3%	19.3%	15.0%	31.4%	24.4%
Banks Road Elementary	0	1069	658	61.6%	12.8%	9.7%	38.8%	30.5%
Barwell Elementary	0	959	762	79.5%	19.4%	6.6%	66.8%	53.2%
Baucom Elementary	10	862	833	96.6%	6.5%	4.0%	22.3%	22.4%
Brassfield Elementary	5	774	750	96.9%	5.6%	2.1%	13.5%	12.5%
Brentwood Elementary	5	395	404	102.3%	37.1%	36.1%	78.0%	52.9%
Briarcliff Elementary	4	571	562	98.4%	16.7%	5.3%	40.4%	17.5%
Brier Creek Elementary	6	864	783	90.6%	7.7%	4.6%	21.7%	27.0%
Brooks Elementary	1	540	576	106.7%	15.8%	11.6%	30.7%	22.4%
Bugg Elementary	0	575	487	84.7%	5.1%	3.7%	55.0%	29.9%
Carpenter Elementary	2	782	728	93.1%	12.0%	7.0%	21.6%	15.9%
Carver Elementary	5	598	429	71.7%	14.2%	2.3%	58.5%	34.7%
Cary Elementary	0	474	489	103.2%	15.7%	14.5%	36.6%	20.1%
Cedar Fork Elementary	6	727	871	119.8%	14.5%	6.5%	10.2%	11.6%
Combs Elementary	13	846	805	95.2%	11.8%	4.7%	29.8%	22.6%
Conn Elementary	4	619	579	93.5%	3.8%	2.6%	41.8%	32.7%
Creech Road Elementary	5	658	489	74.3%	16.2%	11.2%	74.6%	54.5%
Davis Drive Elementary	13	920	951	103.4%	12.5%	6.7%	18.9%	6.7%
Dillard Drive Elementary	10	738	788	106.8%	17.8%	9.3%	50.1%	16.6%
Douglas Elementary	10	589	684	116.1%	9.2%	6.3%	37.7%	36.0%
Durant Road Elementary	18	892	974	109.2%	13.2%	11.5%	38.6%	23.9%
East Garner Elementary	0	872	667	76.5%	19.6%	9.0%	64.8%	33.7%
Farmington Woods	13	745	853	114.5%	11.1%	5.4%	31.8%	22.7%
Forest Pines Drive	0	660	755	114.4%	13.5%	6.6%	34.2%	28.8%
Forestville Road Elementary	6	623	665	106.7%	17.6%	8.0%	54.3%	30.0%

Wake County Public School System 2010-11 Elementary School Information



Table 1. 2010-11 Elementary Schools. 69,069 students are enrolled in 103 elementary schools. 34.9 percent of students are participating in the Free and Reduced-Price Lunch Program (F&R). Of 11.1 percent of students identified with Limited English Proficiency (LEP), 6.2 percent are enrolled in English as a Second Language Program (ESL). The overall campus capacity is for 76,851 students (including 602 temporary classrooms), with crowding percent of 89.9 percent.

Elementary Schools, 2010-11	Total Temporary Classrooms	Annual School Campus Capacity	20th Day Membership	Annual School Campus Percent Crowding	Percent of LEP* Students	Percent of ESL* Students	Percent of F&R* Students	Percent Reading EOG Test for Grades 3-5, Level I and II Performance (2009-10)
Fox Road Elementary	23	968	841	86.9%	24.7%	5.8%	73.2%	41.8%
Fuller Elementary	8	550	529	96.2%	9.3%	4.0%	34.6%	23.2%
Fuquay-Varina Elementary	13	789	734	93.0%	3.4%	2.9%	36.9%	28.3%
Green Elementary	4	692	504	72.8%	11.1%	2.6%	49.6%	35.4%
Green Hope Elementary	9	842	839	99.6%	11.9%	6.4%	22.2%	17.4%
Harris Creek Elementary	4	1179	842	71.4%	11.8%	5.8%	33.3%	28.1%
Herbert Akins Road	0	1078	766	71.1%	6.5%	2.2%	29.4%	32.4%
Heritage Elementary	7	825	881	106.8%	3.5%	2.2%	17.8%	19.0%
Highcroft Drive Elementary	9	1081	777	71.9%	4.2%	2.4%	5.0%	9.5%
Hilburn Drive Elementary	8	704	481	68.3%	13.3%	6.9%	48.0%	40.1%
Hodge Road Elementary	5	657	729	111.0%	27.4%	12.1%	71.1%	44.9%
Holly Grove Elementary	3	1094	854	78.1%	2.8%	0.8%	15.7%	19.0%
Holly Ridge Elementary	8	821	729	88.8%	6.6%	2.2%	28.7%	19.9%
Holly Springs Elementary	16	1088	1071	98.4%	3.4%	1.5%	15.9%	20.3%
Hunter Elementary	6	689	725	105.2%	7.3%	3.9%	39.6%	28.2%
Jeffreys Grove Elementary	3	525	534	101.7%	6.9%	4.9%	40.3%	30.4%
Jones Dairy Elementary	4	798	838	105.0%	1.8%	1.3%	21.2%	14.3%
Joyner Elementary	8	631	666	105.5%	8.1%	4.1%	27.3%	28.5%
Kingswood Elementary	0	359	345	96.1%	19.7%	12.8%	51.0%	23.2%
Knightdale Elementary	8	718	576	80.2%	20.0%	14.8%	58.9%	35.2%
Lacy Elementary	0	644	850	132.0%	11.8%	9.4%	31.4%	25.5%
Lake Myra Elementary	0	1044	548	52.5%	15.3%	7.8%	48.5%	41.6%
Laurel Park Elementary	0	1044	935	89.6%	9.1%	4.6%	16.9%	16.8%
Lead Mine Elementary	1	563	482	85.6%	8.7%	4.4%	37.1%	20.9%
Leesville Road Elementary	17	941	904	96.1%	6.6%	5.1%	26.8%	19.5%
Lincoln Heights Elementary	15	874	512	58.6%	9.0%	6.3%	45.5%	33.8%
Lockhart Elementary	13	752	713	94.8%	13.5%	7.6%	53.4%	25.0%
Lynn Road Elementary	0	617	601	97.4%	6.5%	5.0%	53.6%	41.8%
Middle Creek Elementary	16	1122	951	84.8%	5.3%	3.6%	20.4%	19.4%
Millbrook Elementary	0	679	800	117.8%	18.8%	3.6%	64.4%	41.0%

Wake County Public School System 2010-11 Elementary School Information



Table 1. 2010-11 Elementary Schools. 69,069 students are enrolled in 103 elementary schools. 34.9 percent of students are participating in the Free and Reduced-Price Lunch Program (F&R). Of 11.1 percent of students identified with Limited English Proficiency (LEP), 6.2 percent are enrolled in English as a Second Language Program (ESL). The overall campus capacity is for 76,851 students (including 602 temporary classrooms), with crowding percent of 89.9 percent.

Elementary Schools, 2010-11	Total Temporary Classrooms	Annual School Campus Capacity	20th Day Membership	Annual School Campus Percent Crowding	Percent of LEP* Students	Percent of ESL* Students	Percent of F&R* Students	Percent Reading EOG Test for Grades 3-5, Level I and II Performance (2009-10)
Mills Park Elementary	0	888	947	106.6%	6.7%	3.1%	12.9%	9.3%
Morrisville Elementary	5	816	761	93.3%	4.5%	2.5%	9.5%	11.4%
North Forest Pines	0	802	860	107.2%	10.6%	8.0%	27.4%	23.9%
North Ridge Elementary	13	743	753	101.3%	18.5%	6.4%	41.6%	28.8%
Northwoods Elementary	3	506	523	103.4%	13.6%	11.3%	37.9%	23.0%
Oak Grove Elementary	5	796	818	102.8%	5.7%	2.4%	14.5%	13.8%
Olds Elementary	0	260	288	110.8%	2.1%	2.1%	24.0%	19.5%
Olive Chapel Elementary	14	1141	984	86.2%	4.7%	3.6%	12.5%	16.6%
Partnership Elementary	0	315	337	107.0%	9.5%	5.6%	27.0%	28.8%
Penny Road Elementary	9	747	625	83.7%	8.0%	5.3%	28.5%	19.6%
Pleasant Union Elementary	0	713	660	92.6%	2.1%	1.2%	11.1%	15.9%
Poe Elementary	0	370	361	97.6%	16.6%	12.7%	46.0%	42.3%
Powell Elementary	0	403	420	104.2%	2.4%	0.7%	52.6%	30.5%
Rand Road Elementary	8	843	572	67.9%	4.9%	4.4%	27.8%	23.7%
Reedy Creek Elementary	9	816	556	68.1%	12.6%	5.4%	41.4%	24.7%
River Bend Elementary	0	1056	644	61.0%	24.4%	9.9%	61.6%	40.4%
Rolesville Elementary	9	701	643	91.7%	7.3%	3.7%	38.9%	23.3%
Root Elementary	0	497	482	97.0%	7.5%	6.4%	40.0%	28.9%
Salem Elementary	14	1115	933	83.7%	13.9%	13.0%	19.1%	12.7%
Sanford Creek Elementary	0	765	640	83.7%	6.7%	4.8%	20.6%	23.5%
Smith Elementary	0	701	560	79.9%	18.4%	9.1%	68.2%	42.2%
Stough Elementary	10	554	576	104.0%	13.5%	9.9%	41.8%	34.5%
Swift Creek Elementary	2	522	514	98.5%	10.1%	6.2%	31.7%	21.3%
Sycamore Creek Elementary	0	1078	995	92.3%	6.3%	4.5%	12.9%	16.2%
Timber Drive Elementary	9	860	766	89.1%	13.2%	6.1%	47.9%	35.4%
Turner Creek Elementary	8	1051	951	90.5%	6.3%	2.9%	16.6%	13.4%
Underwood Elementary	0	486	469	96.5%	9.4%	6.4%	26.4%	25.5%
Vance Elementary	6	655	602	91.9%	10.8%	4.8%	32.1%	22.9%
Vandora Springs	5	614	553	90.1%	9.8%	5.1%	46.1%	25.7%
Wake Forest Elementary	0	646	647	100.2%	4.0%	2.0%	36.0%	22.5%

Wake County Public School System 2010-11 Elementary School Information



Table 1. 2010-11 Elementary Schools. 69,069 students are enrolled in 103 elementary schools. 34.9 percent of students are participating in the Free and Reduced-Price Lunch Program (F&R). Of 11.1 percent of students identified with Limited English Proficiency (LEP), 6.2 percent are enrolled in English as a Second Language Program (ESL). The overall campus capacity is for 76,851 students (including 602 temporary classrooms), with crowding percent of 89.9 percent.

Elementary Schools, 2010-11	Total Temporary Classrooms	Annual School Campus Capacity	20th Day Membership	Annual School Campus Percent Crowding	Percent of LEP* Students	Percent of ESL* Students	Percent of F&R* Students	Percent Reading EOG Test for Grades 3-5, Level I and II Performance (2009-10)
Wakefield Elementary	11	991	762	76.9%	14.8%	11.0%	32.4%	30.2%
Wakelon Elementary	0	658	524	79.6%	14.9%	8.8%	70.6%	47.3%
Washington Elementary	0	512	549	107.2%	8.2%	5.1%	29.5%	23.1%
Weatherstone Elementary	13	890	641	72.0%	15.1%	13.1%	32.9%	19.6%
Wendell Elementary	2	552	436	79.0%	14.2%	11.5%	53.0%	39.0%
West Lake Elementary	13	958	827	86.3%	12.7%	8.6%	23.3%	22.0%
Wilburn Elementary	40	737	629	85.3%	14.3%	7.0%	60.9%	45.5%
Wildwood Forest	10	784	736	93.9%	7.5%	3.4%	38.7%	23.8%
Wiley Elementary	0	406	465	114.5%	8.0%	3.9%	27.3%	18.3%
Willow Springs Elementary	16	1113	911	81.9%	6.7%	3.5%	32.2%	16.2%
Yates Mill Elementary	0	522	555	106.3%	20.4%	10.1%	39.8%	33.0%
York Elementary	4	600	432	72.0%	13.4%	3.9%	50.9%	23.1%
Zebulon Elementary	4	611	488	79.9%	16.8%	11.1%	58.8%	35.6%
Total: 103 Elementary Schools	602	76,851	69,099	89.9%	11.1%	6.2%	34.9%	25.4%

Notes:

- *N/A = Program Not Available
- *F&R = Free and Reduced-Price Lunch Programs
- *ESL = English as a Second Language Program
- *LEP = Limited English Proficiency

Data Sources:

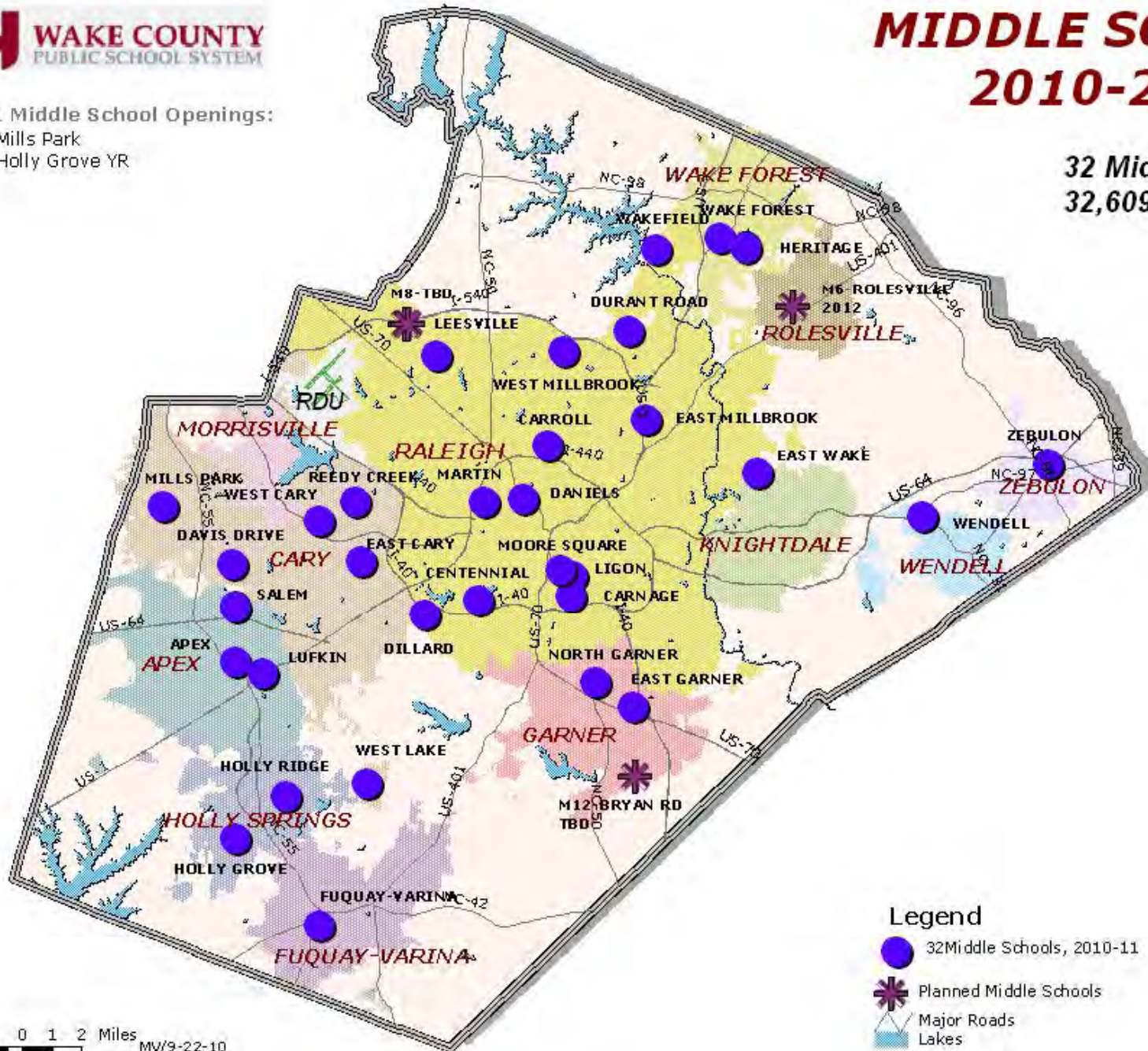
- *20th-Day Student Enrolment data compiled from the Principal Monthly Report Month 1, 2010-2011, received by the Technology Services on 10-4-2010.
- *LEP and *ESL data compiled from Mainframe Report SILDPC30 dated 11-1-10, and NCWISE Report KI-12-20DAY2010-11, received by the Technology Services on 10-4-10.
- *Free and Reduced-Price Lunch data compiled from the Mainframe Report SILDPC30 dated 11-1-10, and NCWISE Report KI-12-20DAY2010-11, received by the Technology Services on 10-4-10.
- *Capacity data based on "2010-11 Facilities Utilization" Report dated 11-16-2010, received by the Long-Range Planning Office.
- *Academic Performance data compiled from 2009-10 Reading End-of-Grade (EOG) Test for Grades 3-5.

2010-11 Middle School Openings:

- Mills Park
- Holly Grove YR

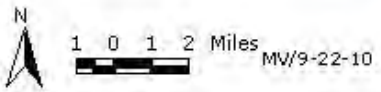
MIDDLE SCHOOLS 2010-2011

32 Middle Schools
32,609 Students



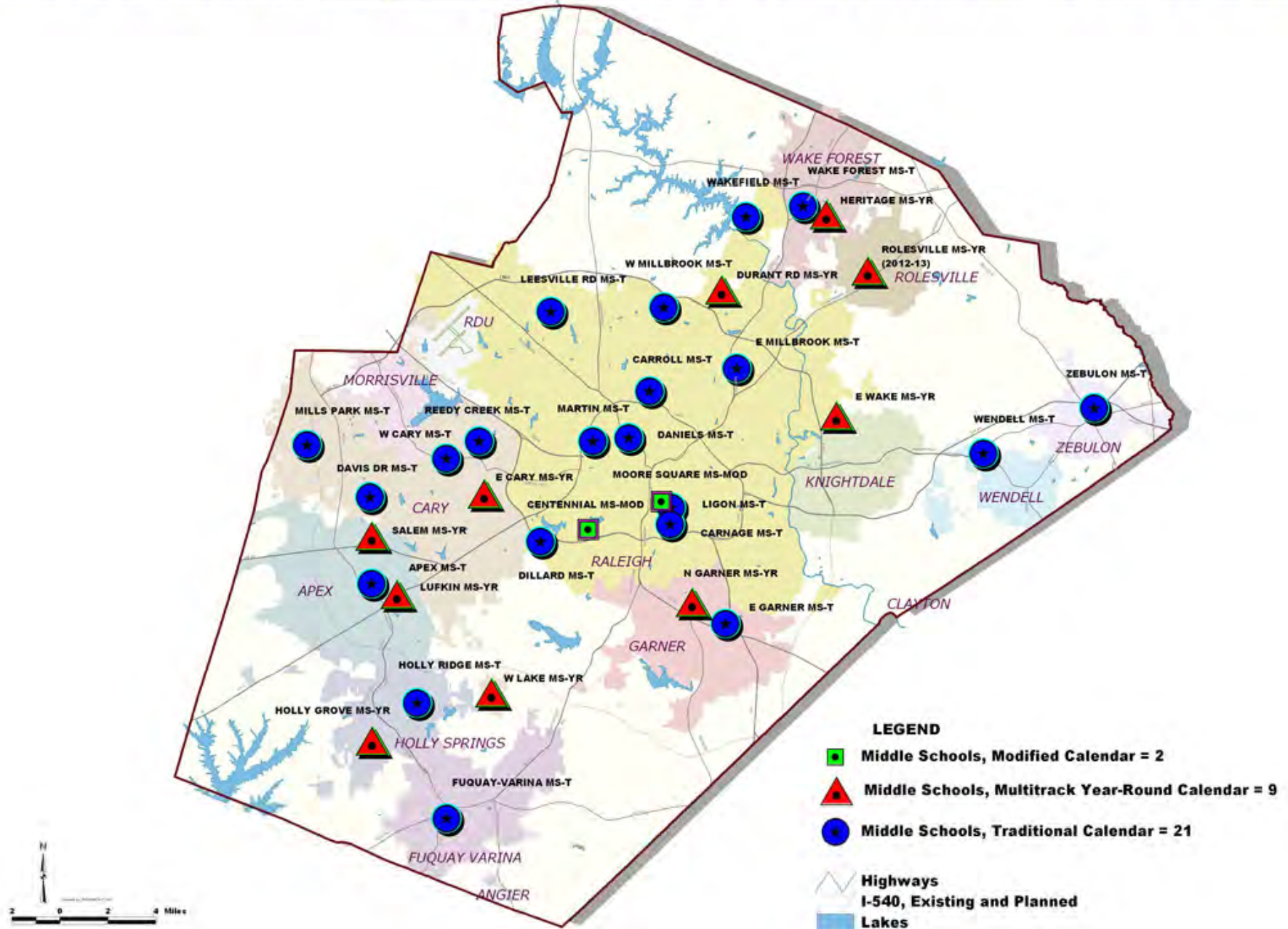
Legend

- 32 Middle Schools, 2010-11
- ✱ Planned Middle Schools
- Major Roads
- Lakes



Middle Schools By Calendar

Data Set: Traditional, Multitrack Year-Round and Modified Calendars, 2010-11



Wake County Public School System 2010-11 Middle School Information



Table 2. 2010-11 Middle Schools. 32,609 students are enrolled in 32 middle schools. 33.6 percent of students are participating in the Free and Reduced-Price Lunch Program (F&R). Of 5.6 percent of students identified with Limited English Proficiency (LEP), 2.5 percent are enrolled in English as a Second Language Program (ESL). The overall campus capacity is for 37,780 students (including 190 temporary classrooms), with crowding percent of 86.3 percent.

Middle Schools, 2010-11	Total Temporary Classrooms	Annual School Campus Capacity	20th Day Membership	Annual School Campus Percent Crowding	Percent of LEP* Students	Percent of ESL* Students	Percent of F&R* Students	Percent Reading EOG Test for Grades 6-8, Level I and II Performance (2009-10)
Apex Middle	0	1144	1054	92.1%	3.5%	2.5%	22.9%	12.9%
Carnage Middle	7	1059	1131	106.8%	6.0%	2.6%	40.2%	26.6%
Carroll Middle	0	868	692	79.7%	6.1%	3.9%	52.9%	35.0%
Centennial Campus Middle	0	624	601	96.3%	10.0%	4.8%	36.3%	31.7%
Daniels Middle	6	1344	1087	80.9%	7.0%	2.9%	33.1%	24.2%
Davis Drive Middle	10	1166	1186	101.7%	4.4%	2.5%	17.5%	11.4%
Dillard Drive Middle	6	1179	1170	99.2%	6.4%	2.5%	37.4%	25.8%
Durant Road Middle	11	1600	1371	85.7%	5.5%	2.4%	31.9%	24.1%
East Cary Middle	0	1293	810	62.6%	5.4%	2.0%	23.1%	16.4%
East Garner Middle	21	1374	1157	84.2%	6.4%	3.7%	55.0%	38.0%
East Millbrook Middle	18	1290	1163	90.2%	9.1%	4.6%	55.9%	38.5%
East Wake Middle	12	1353	970	71.7%	10.6%	3.5%	58.9%	36.7%
Fuquay-Varina Middle	0	928	894	96.3%	3.8%	1.0%	39.3%	25.9%
Heritage Middle	0	1257	1392	110.7%	2.2%	1.1%	18.2%	14.0%
Holly Grove Middle	0	1623	947	58.3%	5.7%	3.4%	26.5%	N/A
Holly Ridge Middle	14	1283	1017	79.3%	2.9%	1.7%	27.4%	21.9%
Leesville Road Middle	16	1215	1344	110.6%	6.0%	2.3%	32.9%	26.1%
Ligon Middle	3	1059	1099	103.8%	2.8%	0.8%	32.9%	19.8%
Lufkin Road Middle	0	1235	1044	84.5%	3.0%	1.8%	14.8%	11.5%
Martin Middle	3	1042	1020	97.9%	7.3%	3.3%	28.9%	21.6%
Mills Park Middle	0	1311	1101	84.0%	2.9%	1.3%	13.3%	N/A
Moore Square Middle	0	581	506	87.1%	8.3%	4.2%	49.0%	43.7%
North Garner Middle	5	1318	1076	81.6%	5.4%	3.6%	45.3%	30.8%
Reedy Creek Middle	0	967	888	91.8%	8.6%	2.4%	41.7%	24.4%
Salem Middle	2	1305	1096	84.0%	3.2%	1.6%	15.9%	8.3%
Wake Forest-Rolesville Middle	13	1189	1151	96.8%	6.3%	2.7%	40.1%	29.0%
Wakefield Middle	13	1270	1201	94.6%	5.2%	1.6%	22.1%	19.4%
Wendell Middle	0	1170	945	80.8%	5.8%	1.2%	54.7%	33.5%
West Cary Middle	6	1170	702	60.0%	5.6%	2.6%	22.5%	19.9%

Wake County Public School System 2010-11 Middle School Information

Middle Schools, 2010-11	Total Temporary Classrooms	Annual School Campus Capacity	20th Day Membership	Annual School Campus Percent Crowding	Percent of LEP* Students	Percent of ESL* Students	Percent of F&R* Students	Percent Reading EOG Test for Grades 6-8, Level I and II Performance (2009-10)
West Lake Middle	12	1426	1251	87.7%	3.4%	1.3%	21.3%	18.7%
West Millbrook Middle	8	1140	966	84.7%	9.1%	6.2%	38.7%	29.5%
Zebulon Middle	4	997	577	57.9%	8.1%	2.6%	59.8%	34.5%
Total: 32 Middle Schools	190	37,780	32,609	86.3%	5.6%	2.5%	33.6%	24.1%

Notes:

- *N/A = Program Not Available
- *F&R = Free and Reduced-Price Lunch Programs
- *ESL = English as a Second Language Program
- *LEP = Limited English Proficiency

Data Sources:

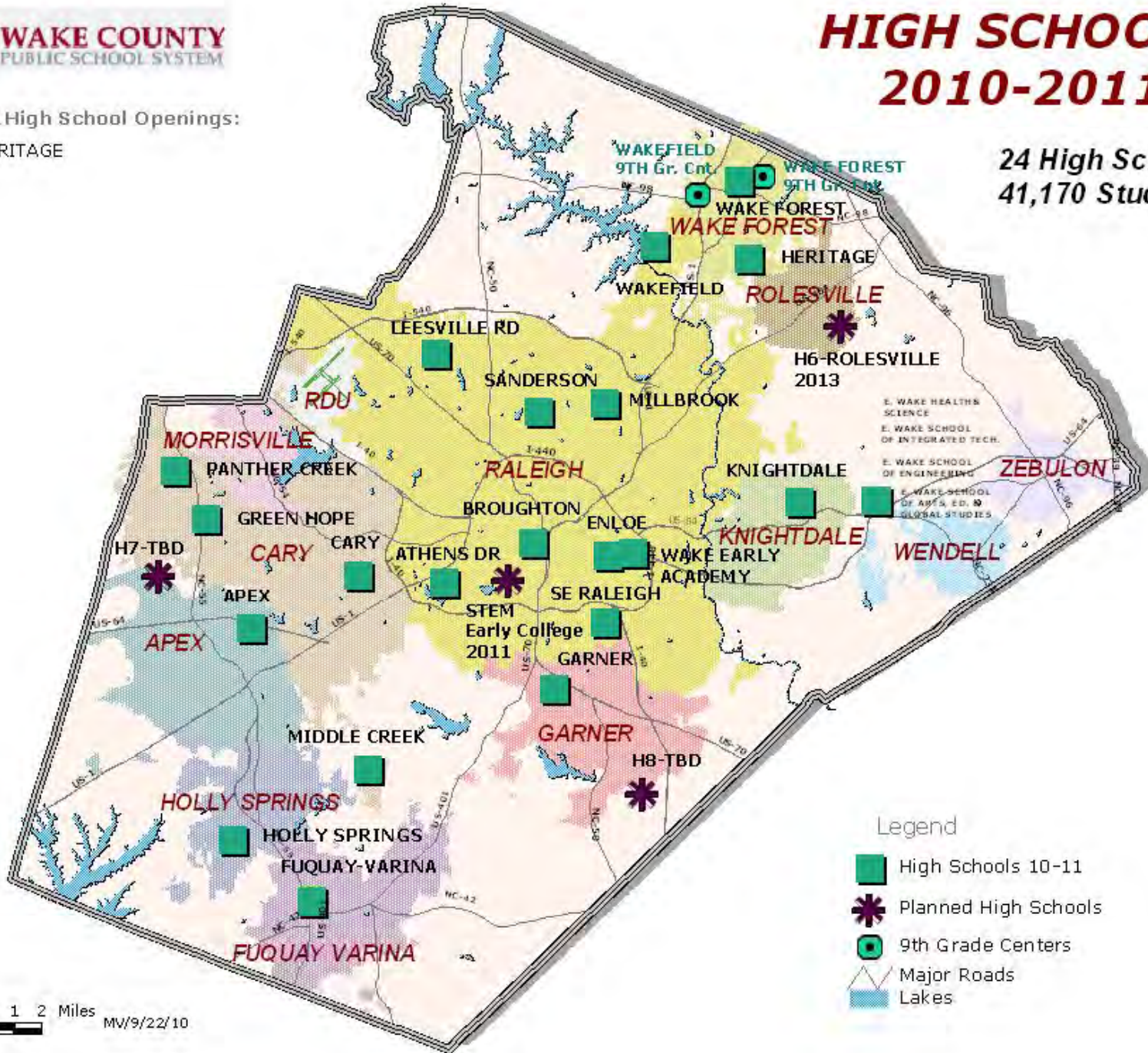
- *20th-Day Student Enrolment data compiled from the Principal Monthly Report Month 1, 2010-2011, received by the Technology Services on 10-4-2010.
- *LEP and *ESL data compiled from Mainframe Report SILDPC30 dated 11-1-10, and NCWISE Report KI-12-20DAY2010-11, received by the Technology Services on 10-4-10.
- *Free and Reduced-Price Lunch data compiled from the Mainframe Report SILDPC30 dated 11-1-10, and NCWISE Report KI-12-20DAY2010-11, received by the Technology Services on 10-4-10.
- *Capacity data based on "2010-11 Facilities Utilization" Report dated 11-16-2010, received by the Long-Range Planning Office.
- *Academic Performance data compiled from 2009-10 Reading End-of-Grade (EOG) Test for Grades 6-8.

2010-11 High School Openings:

- HERITAGE

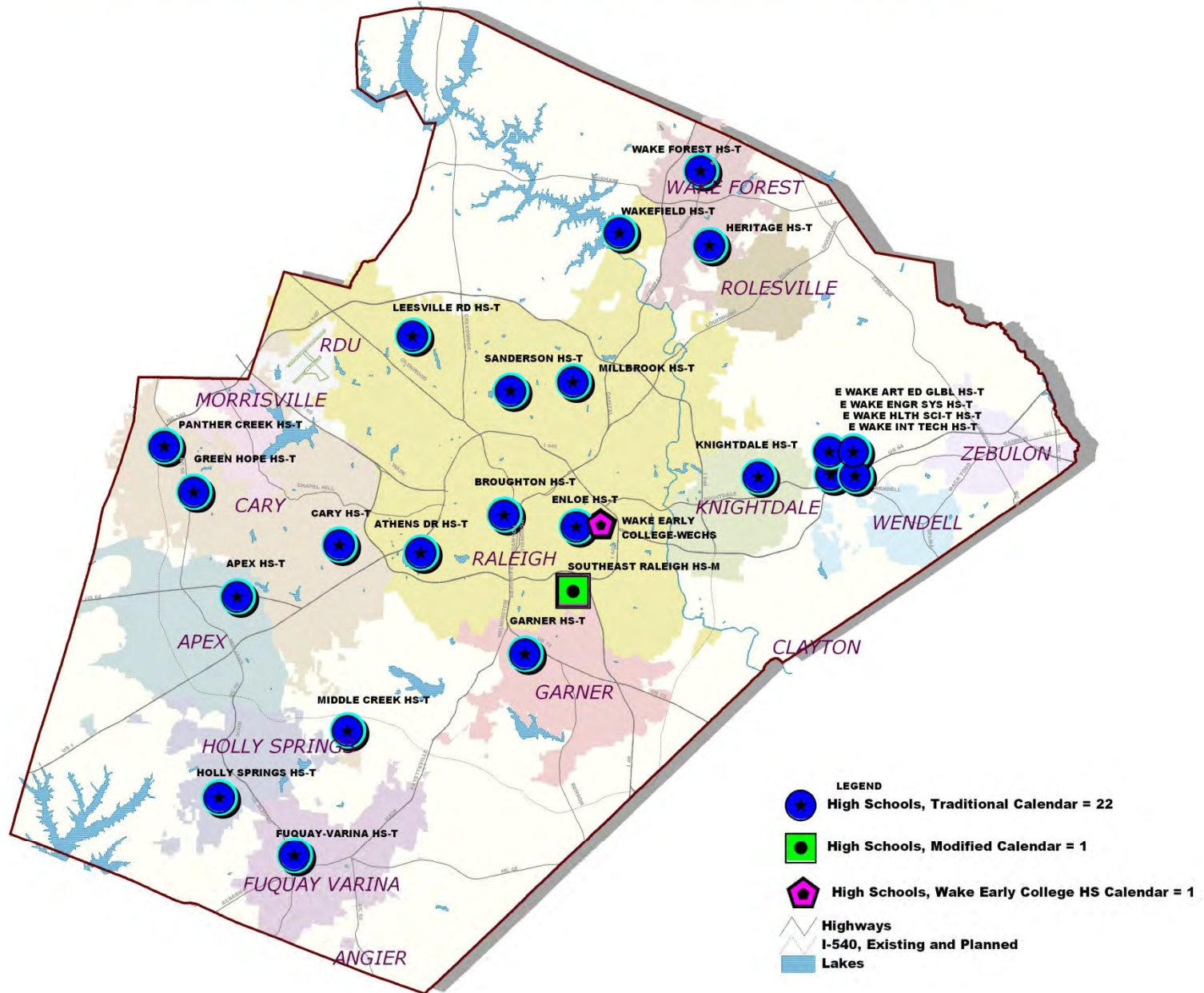
HIGH SCHOOLS 2010-2011

24 High Schools
41,170 Students



High Schools By Calendar

Data Set: Traditional and Modified Calendars, 2010-11



Wake County Public School System 2010-11 High School Information



Table 3. 2010-11 High Schools. 41,170 students are enrolled in 24 high schools. 26.8 percent of students are participating in the Free and Reduced-Price Lunch Program (F&R). Of 4.6 percent of students identified with Limited English Proficiency (LEP), 2.4 percent are enrolled in English as a Second Language Program (ESL). The overall campus capacity is for 43,780 students (including 368 temporary classrooms), with crowding percent of 94.0 percent.

High Schools, 2010-11	Total Temporary Classrooms	Annual School Campus Capacity	20th Day Membership	Annual School Campus Percent Crowding	Percent of LEP* Students	Percent of ESL* Students	Percent of F&R* Students	Percent English I End-of-Course (EOC) Test for Grade 9, Level I and II Performance (2009-10)
Apex High	35	2479	2341	94.4%	2.1%	1.5%	9.4%	4.4%
Athens Drive High	15	2011	1927	95.8%	7.5%	3.1%	29.8%	18.4%
Broughton High	12	2087	2174	104.2%	5.9%	4.3%	30.1%	18.1%
Cary High	0	2198	2250	102.4%	7.0%	3.2%	28.9%	9.6%
East Wake High School of Health Science	4	394	369	93.7%	7.0%	2.7%	44.7%	12.5%
East Wake School of Arts, Education and Global Studies	2	419	401	95.7%	8.5%	3.0%	51.9%	22.7%
East Wake School of Engineering Systems	1	408	374	91.7%	3.7%	1.9%	40.9%	24.1%
East Wake School of Integrated Technology	0	436	326	74.8%	7.7%	2.1%	59.5%	38.8%
Enloe High	8	2601	2669	102.6%	3.7%	2.2%	32.8%	16.2%
Fuquay-Varina High	23	2179	1968	90.3%	3.3%	1.3%	24.6%	11.5%
Garner High	40	2300	2297	99.9%	4.4%	2.4%	37.7%	18.0%
Green Hope High	17	2089	2029	97.1%	2.3%	1.8%	6.2%	4.1%
Heritage High	0	1663	814	48.9%	6.4%	3.8%	32.6%	N/A
Holly Springs High	8	1915	2000	104.4%	3.2%	1.7%	20.0%	10.8%
Knightdale High	16	2026	1763	87.0%	7.4%	2.3%	40.4%	22.9%
Leesville Road High	12	2339	2408	102.9%	3.9%	2.3%	18.1%	12.8%
Middle Creek High	18	2080	1814	87.2%	4.9%	2.1%	30.3%	15.1%
Millbrook High	18	2516	2443	97.1%	6.2%	3.0%	31.6%	19.6%
Panther Creek High	22	2248	2348	104.4%	2.8%	1.8%	10.8%	5.1%
Sanderson High	10	1953	1905	97.5%	5.5%	3.8%	27.2%	21.4%
Southeast Raleigh High	14	1925	1663	86.4%	3.5%	2.2%	40.2%	26.3%
Wake Early College of Health and Sciences	0	251	237	94.4%	2.5%	0.4%	29.5%	0.0%
Wake Forest-Rolesville High	27	2160	2077	96.2%	2.7%	1.2%	25.0%	11.7%
Wakefield High	66	3103	2573	82.9%	5.1%	2.7%	27.1%	12.3%
Total: 24 High Schools	368	43,780	41,170	94.0%	4.6%	2.4%	26.8%	14.5%

Wake County Public School System 2010-11 High School Information

Notes:

- *N/A = Program Not Available
- *F&R = Free and Reduced-Price Lunch Programs
- *ESL = English as a Second Language Program
- *LEP = Limited English Proficiency

Data Sources:

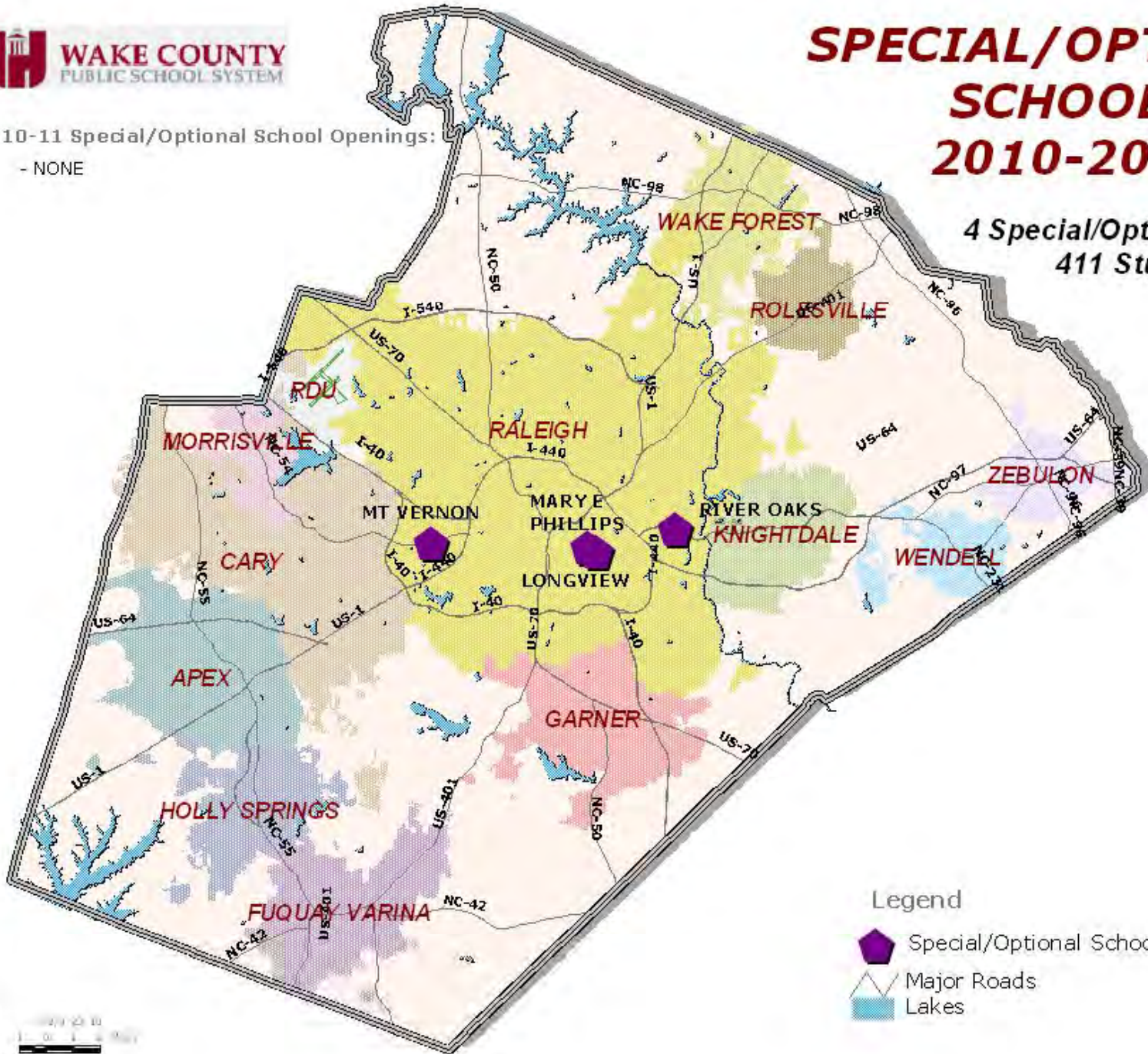
- *20th-Day Student Enrolment data compiled from the Principal Monthly Report Month 1, 2010-2011, received by the Technology Services on 10-4-2010.
- *LEP and *ESL data compiled from Mainframe Report SILDPC30 dated 11-1-10, and NCWISE Report KI-12-20DAY2010-11, received by the Technology Services on 10-4-10.
- *Free and Reduced-Price Lunch data compiled from the Mainframe Report SILDPC30 dated 11-1-10, and NCWISE Report KI-12-20DAY2010-11, received by the Technology Services on 10-4-10.
- *Capacity data based on "2010-11 Facilities Utilization" Report dated 11-16-2010, received by the Long-Range Planning Office.
- *Academic Performance data compiled from 2009-10 English I End-of-Course (EOC) Test for Grade 9.

2010-11 Special/Optional School Openings:




- NONE

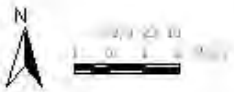
SPECIAL/OPTIONAL SCHOOLS 2010-2011

4 Special/Optional Schools
411 Students



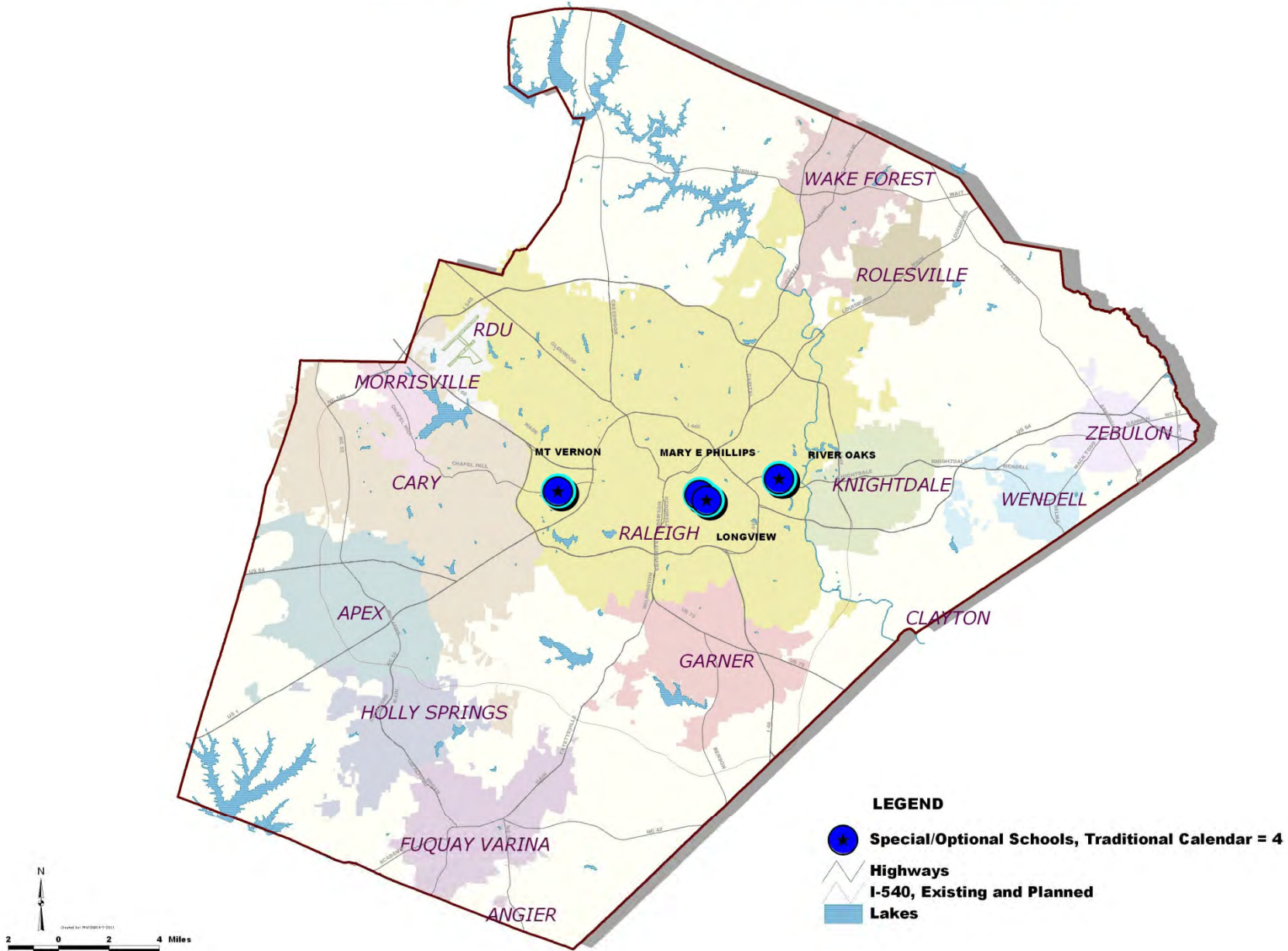
Legend

-  Special/Optional Schools 2010-11
-  Major Roads
-  Lakes



Special/Optional Schools By Calendar

Data Set: Traditional Calendar, 2010-11



Wake County Public School System 2010-11 Special/Optional School Information



Table 4. 2010-11 Special/Optional Schools. 384 students are enrolled in 4 special/optional schools. 75.7 percent of students are participating in the Free and Reduced-Price Lunch Program (F&R). Of 2.7 percent of students identified with Limited English Proficiency (LEP), 0.5 percent are enrolled in the English as a Second Language Program (ESL). The overall campus capacity is for 384 students (including 1 temporary classroom), with crowding percent of 107.0 percent.

Special/Optional Schools 2010-11	Total Temporary Classrooms	Annual School Campus Capacity	20th Day Membership	Annual School Campus Percent Crowding	Percent of LEP* Students	Percent of ESL* Students	Percent of F&R* Students	Percent Reading EOG Test for Grades 3-8, Level I and II Performance (2009-10)	Percent English I End-of-Course (EOC) Test for Grade 9, Level I and II Performance (2009-10)
Longview School (6-8 Grade)	0	102	114	111.8%	0.9%	0.9%	83.3%	88.9%	73.7%
Mary E. Phillips High School	0	144	166	115.3%	1.8%	0.0%	72.3%	N/A	50.0%
River Oaks Middle School	0	0	36	0.0%	11.1%	0.0%	75.0%	50.0%	N/A
Mount Vernon School (1-8 Grade)	1	138	95	68.8%	3.2%	1.1%	72.6%	64.5%	N/A
Total: 4 Special/Optional Schools	1	384	411	107.0%	2.7%	0.5%	75.7%	65.4%	61.00%

Notes:

- *N/A = Program Not Available
- *F&R = Free and Reduced-Price Lunch Programs
- *ESL = English as a Second Language Program
- *LEP = Limited English Proficiency

Data Sources:

- *20th-Day Student Enrolment data compiled from the Principal Monthly Report Month 1, 2010-2011, received by the Technology Services on 10-4-2010.
- *LEP and *ESL data compiled from Mainframe Report SILDPC30 dated 11-1-10, and NCWISE Report KI-12-20DAY2010-11, received by the Technology Services on 10-4-10.
- *Free and Reduced-Price Lunch data compiled from the Mainframe Report SILDPC30 dated 11-1-10, and NCWISE Report KI-12-20DAY2010-11, received by the Technology Services on 10-4-10.
- *Capacity data based on "2010-11 Facilities Utilization" Report dated 11-16-2010, received by the Long-Range Planning Office.
- *Academic Performance data compiled from 2009-10 English I End-of-Course (EOC) Test for Grade 9, and 2009-10 Reading End-of-Grade (EOG) Test for Grades 3-8.

Data Sources

Notes:

- ***N/A** = Program Not Available
- ***F&R** = Free & Reduced-Price Lunch Program
- ***ESL** = English as a Second Language Program
- ***LEP** = Limited English Proficiency

Data Sources:

***20th-Day Student Enrolment** data compiled from the Principal Monthly Report Month 1, 2010-2011, received by the Technology Services on 10-4-2010.

***LEP and** *compiled from Mainframe Report SILDPC30 dated 11-1-10, and NCWISE Report KI-12-20DAY2010-11, received by the Technology Services on 10-4-10.

***Free and Reduced-Price Lunch** data compiled from the Mainframe Report SILDPC30 dated 11-1-10, and NCWISE Report KI-12-20DAY2010-11, received by the Technology Services on 10-4-10.

***Capacity** data based on "2010-11 Facilities Utilization" Report dated 11-16-2010, received by the Long-Range Planning Office.

***Academic Performance** data compiled from 2009-10 English I End-of-Course (EOC) Test for Grade 9, and 2009-10 Reading End-of-Grade (EOG) Test for Grades 3-8.

***GIS files:** node, school and student data shape files received from the WCPSS Growth and Planning's Geographic Information Systems (GIS) Department. Other files are from the Wake County's Planning and GIS Departments.

Schools: Quick Facts with Maps

OVERVIEW	QUICK FACTS	GROWTH	SCHOOL REPORTS	STUDIES
--------------------------	-----------------------------	------------------------	--------------------------------	-------------------------

The following web pages provide **School Facts and Maps** (with downloads) on WCPSS enrollment, school capacity, academic achievement, participation in Free or Reduced-Price Lunch Program (F&R), and English as a Second Language Program (ESL), for schools listed by educational level and by school year (from 2003 to 2009).



[Click here](#) to see **satellite photos** of schools.



Click on a School Year number (e.g., 2009) of a School Level type school (e.g., Elementary Schools) to see data and maps.

School Level	School Year							
Elementary Schools	2010	2009	2008	2007	2006	2005	2004	2003
Middle Schools	2010	2009	2008	2007	2006	2005	2004	2003
High Schools	2010	2009	2008	2007	2006	2005	2004	2003
Special/Optional Schools	2010	2009	2008	2007	2006	2005	2004	2003
All Schools	2010	2009	2008	2007	2006	2005	2004	2003