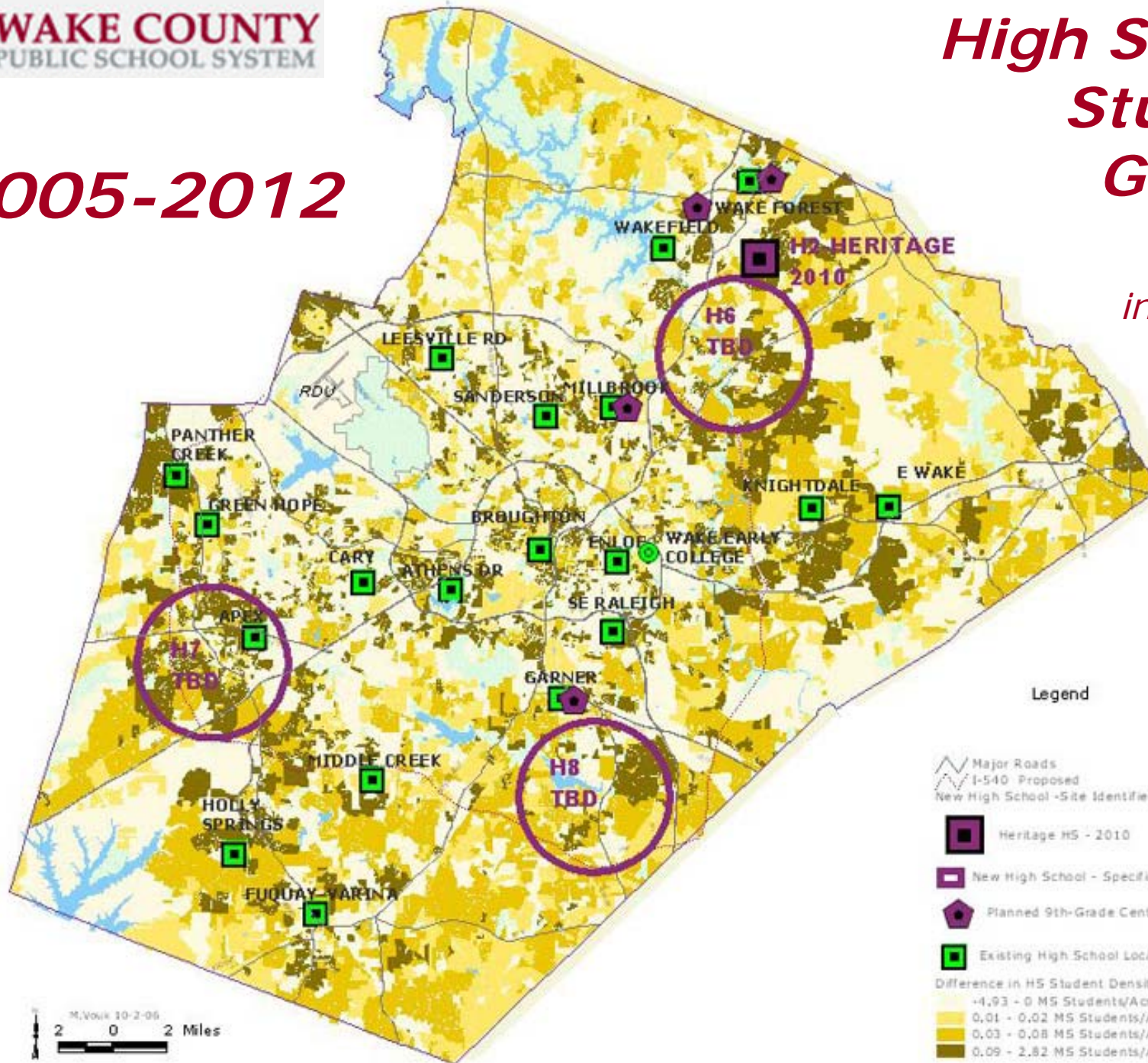


**2005-2012**

# High School Student Growth

*Difference in Densities by 5,960 Planning Regions*



Legend

- Major Roads
- I-540 Proposed
- New High School - Site Identified
- Heritage HS - 2010
- New High School - Specific Site TBD
- Planned 9th-Grade Centers/Expansions, One TBD
- Existing High School Locations
- Difference in HS Student Density, 2005-2012
  - 4.93 - 0 MS Students/Acre
  - 0.01 - 0.02 MS Students/Acre
  - 0.03 - 0.08 MS Students/Acre
  - 0.09 - 2.82 MS Students/Acre

