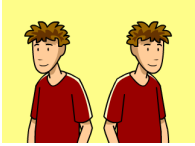


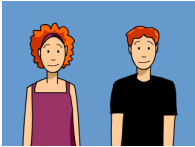
1.



Identical twins share the exact same:

- A. Genes
- B. Personalities
- C. Interests
- D. Identities

2.



What can you infer about the following set of twins?

- A. They are identical twins
- B. They are fraternal twins
- C. They are conjoined twins
- D. They are mixed twins

3. What is the key difference between fraternal twins and identical twins?

- A. Fraternal twins are born several hours apart; identical twins are usually born at the same time
- B. Identical twins are born at the same time; fraternal twins are usually born several hours apart
- C. Identical twins develop from two separate eggs; fraternal twins develop from one fertilized egg
- D. Identical twins develop from one fertilized egg; fraternal twins develop from two separate eggs

4. Place the following events in sequence: A) A fertilized egg splits; B) Identical twins develop; C) A sperm and egg cell unite

- A. A, C, B
- B. B, A, C
- C. C, A, B
- D. C, B, A

5. In the phrase, "Twins develop during the prenatal stage of life," what does "prenatal" mean?

- A. After birth
- B. Before birth
- C. Before conception
- D. During birth

6. What must happen for fraternal twins to develop?

- A. A fertilized egg must divide twice as rapidly as it ordinarily does
- B. A sperm cell must split in half
- C. An egg cell must split within the uterus
- D. A woman must release two egg cells at the same time

7. Which term best describes the genetic makeup of fraternal twins?

- A. Indistinguishable
- B. Similar
- C. Opposite
- D. Generic

8.



How are conjoined twins formed?

- A. When two sperm fertilize one egg
- B. When two separate eggs fuse together
- C. When one fraternal twin begins to consume the other in the womb
- D. When identical twins start to form but don't split completely

9. What can you conclude from the fact that doctors usually try to surgically separate conjoined twins?

- A. Conjoined twins often face dangerous health risks
- B. Conjoined twins can never lead fulfilling lives
- C. Conjoined twins will die immediately if they're not separated
- D. Conjoined twins are not legally allowed to live

10. Which term best describes the occurrence of conjoined twins?

- A. Frequent
- B. Uncommon
- C. Typical
- D. Impossible