

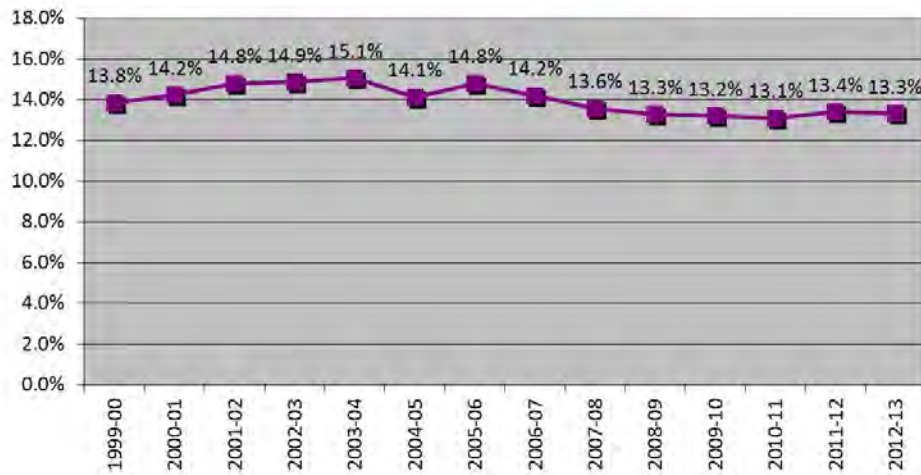
---

Vc.

Special Needs Programs  
and  
ABC Performance Results

# Special Needs Programs

**Special Education Students**



**2012-13:**

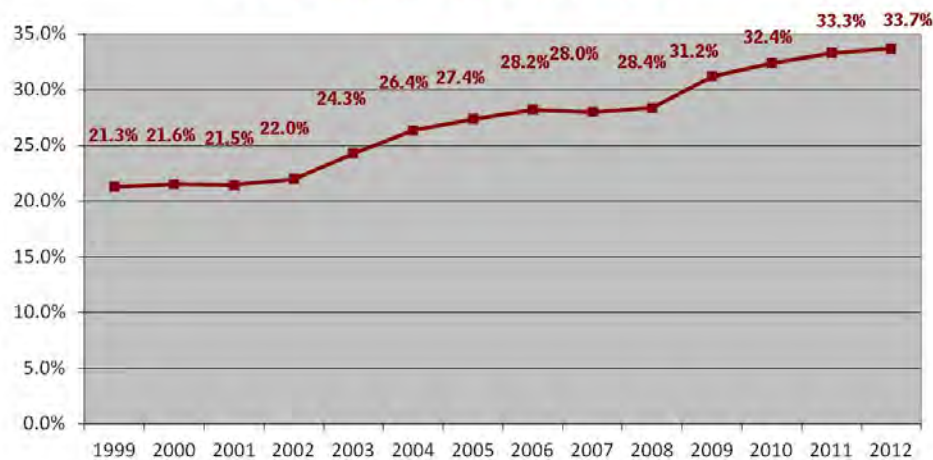
**Sp. Ed. = 19,915 or 13.3% Students**

**F&R = 50,432 or 33.7% Students**

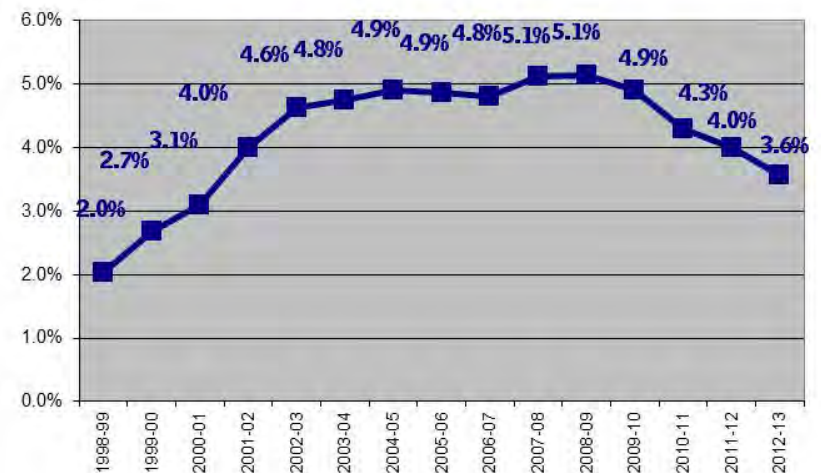
**LEP = 11,143 or 7.5% Students**

**ESL= 5,326 or 3.6% Students**

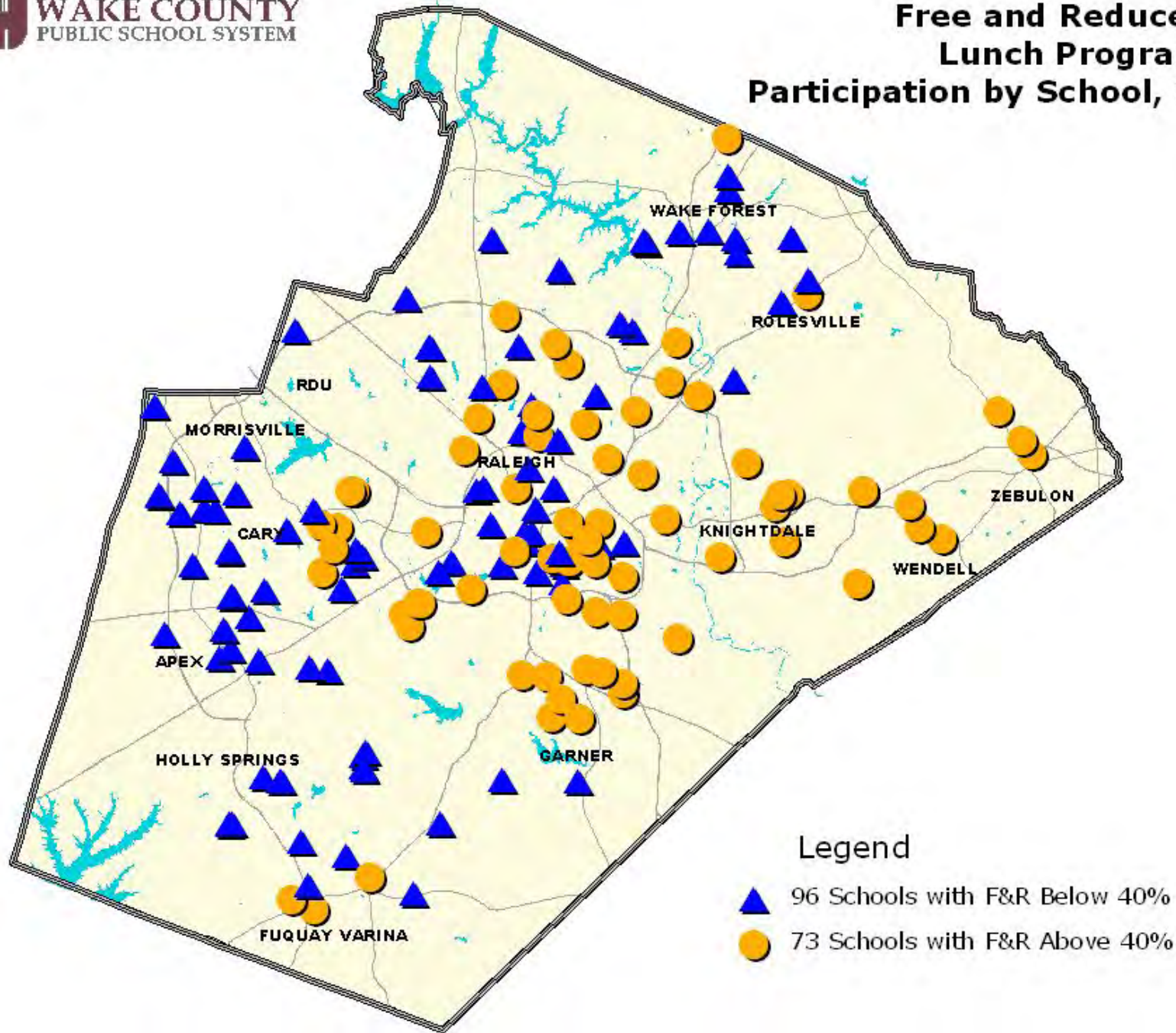
**Free and Reduced Price Lunches**



**English as a Second Language**



## Free and Reduced-Price Lunch Program (F&R) Participation by School, 2012-13





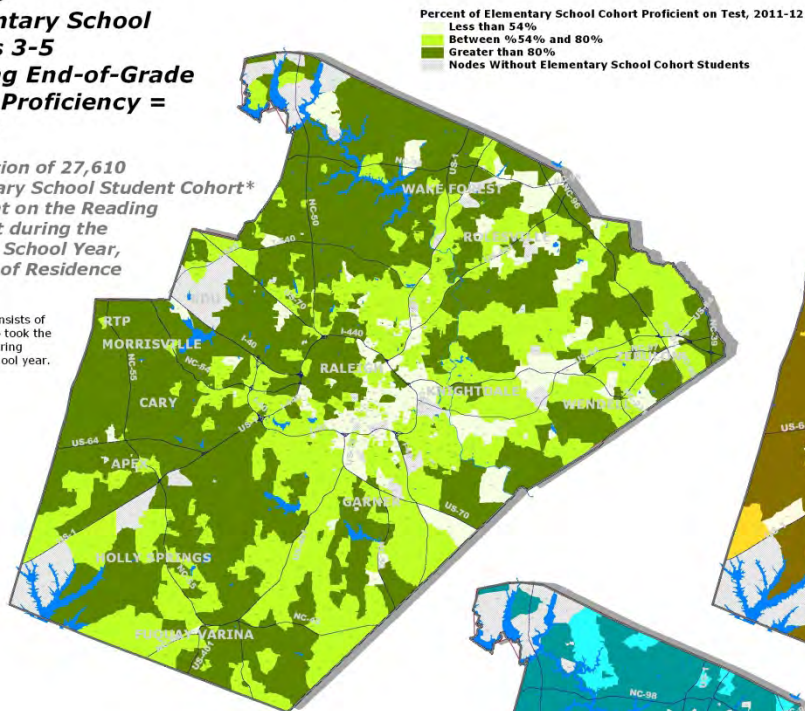
# Percent of Students By Node of Residence: 2011-12 School Year

Data Sets: Reading and English I Proficiency, and On-Time Graduation Rates

**WCPSS  
Elementary School  
Grades 3-5  
Reading End-of-Grade  
(EOG) Proficiency =  
77.9%**

Distribution of 27,610  
Elementary School Student Cohort\*  
Proficient on the Reading  
EOG Test during the  
2011-12 School Year,  
by Node of Residence

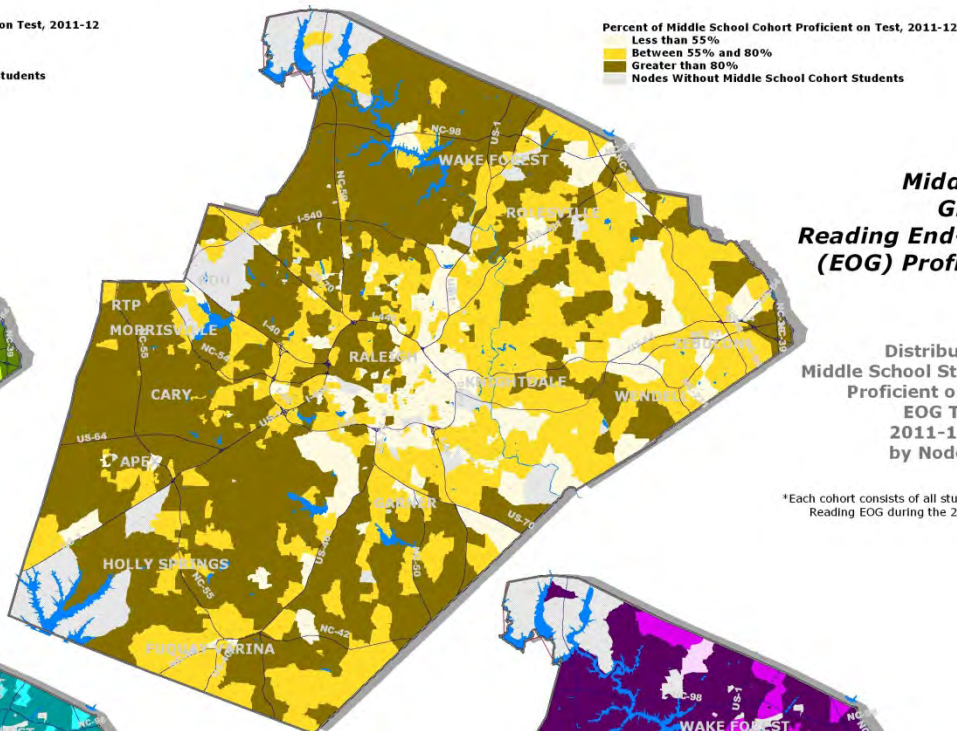
\*Each cohort consists of  
all students who took the  
Reading EOG during  
the 2011-12 school year.



**WCPSS  
Middle School  
Grades 6-8  
Reading End-of-Grade  
(EOG) Proficiency =  
76.7%**

Distribution of 25,828  
Middle School Student Cohort\*  
Proficient on the Reading  
EOG Test during the  
2011-12 School Year,  
by Node of Residence

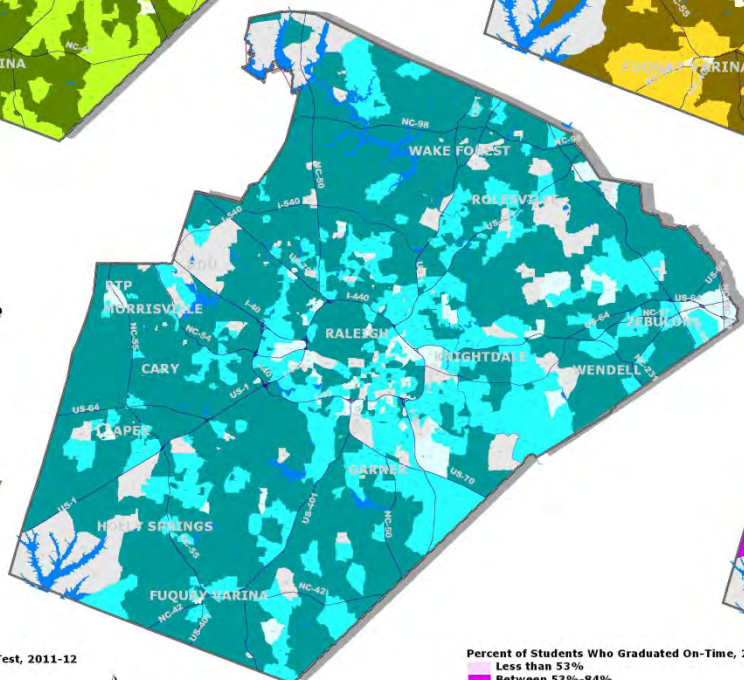
\*Each cohort consists of all students who took the  
Reading EOG during the 2011-12 school year.



**WCPSS  
High School  
9th Grade  
English I End-of-Course  
(EOC) Proficiency =  
87.7%**

Distribution of 9,786  
Ninth Grade Student Cohort\*  
Proficient on the English I EOC  
During the 2010-11 School Year,  
by Node of Residence

\*The cohort consists of all students who took the  
English I EOC during the 2011-12 school year.



**WCPSS  
4-year On-Time  
Graduation Rate =  
80.6%**

Distribution of 8,748  
Students in Graduating Cohort\*  
Who Graduated On-Time,  
by Node of Residence

\*The cohort consists of Entering 9th Graders in  
2008-09 and Graduating in 2011-12 or earlier.

Percent of 9th Grade Student Cohort Proficient on Test, 2011-12  
Less than 53%  
Between 53%-86%  
Greater than 86%  
Nodes Without High School 9th Grade Cohort Students

Percent of Students Who Graduated On-Time, 2011-12  
Less than 53%  
Between 53%-84%  
Greater than 84%  
Nodes Without On-Time-Graduation Students



WCPSS School General Information, 2012-2013

Code	School Name	Level	Grade Span	Calendar	Magnet Programs	School Membership 2012-13	F&R	Percent F&R	ESL	Percent ESL	LEP	Percent LEP	TITLE 1 PROGRAM	NC ABC Results Performance Composite % 2011-12	NC ABC Results Performance Recognition 2011-12	NC ABC Results Growth Recognition 2011-12	Met All AMO Targets
304	ADAMS ES	E	KI-5	Y-R		807	302	37.4%	78	9.7%	139	17.2%	YES	88.7	Dst	Hgh	Yes
307	ALSTON RIDGE ES	E	KI-5	Y-R tr 4		757	72	9.5%	13	1.7%	55	7.3%	NO	91.5	HE	Hgh	Yes
308	APEX ES	E	KI-5	T		682	242	35.5%	38	5.6%	83	12.2%	NO	88.6	Dst	Hgh	Yes
320	AVERSBORO ES	E	KI-5	T		530	302	57.0%	23	4.3%	60	11.3%	YES	76.8	Pro	Hgh	Yes
326	BAILEYWICK ES	E	KI-5	T		454	234	51.5%	56	12.3%	110	24.2%	YES	75.6	Pro	Exp	No
327	BALLENTINE ES	E	KI-5	Y-R		569	170	29.9%	59	10.4%	86	15.1%	NO	82.8	Dst	Hgh	Yes
325	BANKS RD ES	E	KI-5	Y-R		761	237	31.1%	55	7.2%	82	10.8%	YES	82.2	Dst	Hgh	Yes
329	BARWELL RD ES	E	KI-5	Y-R		633	442	69.8%	63	10.0%	154	24.3%	YES	74.1	Pro	Hgh	Yes
328	BAUCOM ES	E	KI-5	T		865	155	17.9%	28	3.2%	53	6.1%	NO	89.6	Dst	Hgh	Yes
334	BRASSFIELD ES	E	KI-5	Y-R		750	101	13.5%	25	3.3%	40	5.3%	NO	89.9	Dst	Hgh	Yes
336	BRENTWOOD ES	E	KI-5	T	Engineering	441	346	78.5%	78	17.7%	129	29.3%	YES	64.1	Pro	Exp	No
340	BRIARCLIFF ES	E	KI-5	T		617	264	42.8%	30	4.9%	89	14.4%	YES	90.0	HE	Hgh	Yes
342	BRIER CREEK ES	E	KI-5	Y-R		775	152	19.6%	35	4.5%	53	6.8%	NO	81.2	Dst	Hgh	Yes
344	BROOKS ES	E	KI-5	T	Museums Creative Arts & Science	582	141	24.2%	43	7.4%	62	10.7%	NO	83.2	Dst	Hgh	Yes
352	BUGG ES	E	KI-5	T		611	385	63.0%	13	2.1%	32	5.2%	YES	70.6	Pro	Hgh	No
358	CARPENTER ES	E	KI-5	Y-R		720	152	21.1%	33	4.6%	95	13.2%	NO	87.0	Dst	Hgh	No
362	CARVER ES	E	KI-5	MOD		448	243	54.2%	34	7.6%	48	10.7%	YES	80.1	Dst	Hgh	Yes
364	CARY ES	E	KI-5	T		551	230	41.7%	53	9.6%	81	14.7%	YES	88.3	Dst	Hgh	Yes
369	CEDAR FORK ES	E	KI-5	T		767	73	9.5%	21	2.7%	65	8.5%	NO	94.3	HE	Hgh	Yes
376	COMBS ES	E	KI-5	T	Leadership Active Learning and Technology	872	271	31.1%	46	5.3%	98	11.2%	NO	81.3	Dst	Hgh	No
380	CONN ES	E	KI-5	T		671	318	47.4%	15	2.2%	27	4.0%	YES	75.9	Pro	Hgh	Yes
384	CREECH RD ES	E	KI-5	T		614	507	82.6%	37	6.0%	116	18.9%	YES	58.1	Pri	Hgh	No
390	DAVIS DR ES	E	KI-5	T		978	46	4.7%	38	3.9%	46	4.7%	NO	97.7	HE	Hgh	Yes
393	DILLARD DR ES	E	KI-5	T		689	415	60.2%	51	7.4%	147	21.3%	YES	80.9	Dst	Hgh	Yes
396	DOUGLAS ES	E	KI-5	T	Creative Arts & Science	684	252	36.8%	78	11.4%	85	12.4%	YES	78.7	Pro	Exp	No
398	DURANT RD ES	E	KI-5	Y-R		954	323	33.9%	56	5.9%	88	9.2%	YES	80.9	Dst	Hgh	Yes
403	E GARNER ES	E	KI-5	Y-R		587	387	65.9%	50	8.5%	129	22.0%	YES	74.6	Pro	Hgh	Yes
414	FARMINGTON WOODS ES	E	KI-5	T	International Baccalaureate- PYP	797	216	27.1%	47	5.9%	77	9.7%	NO	83.3	Dst	Hgh	No
417	FOREST PINES DR ES	E	KI-5	T		669	199	29.7%	29	4.3%	43	6.4%	NO	83.1	Dst	Hgh	Yes
413	FORESTVILLE RD ES	E	KI-5	T		672	401	59.7%	63	9.4%	132	19.6%	YES	83.5	Dst	Hgh	Yes
415	FOX RD ES	E	KI-5	T		832	669	80.4%	97	11.7%	213	25.6%	YES	66.5	Pro	Exp	No
416	FULLER ES	E	KI-5	T	Gifted & Talented/AG Basics	598	244	40.8%	39	6.5%	87	14.5%	YES	79.5	Pro	Hgh	No
420	FUQUAY-VARINA ES	E	KI-5	T		695	296	42.6%	30	4.3%	51	7.3%	YES	84.0	Dst	Hgh	Yes
440	GREEN ES	E	KI-5	Y-R		484	303	62.6%	36	7.4%	103	21.3%	YES	69.3	Pro	Hgh	No
439	GREEN HOPE ES	E	KI-5	T		877	103	11.7%	42	4.8%	87	9.9%	NO	91.4	Exc	Hgh	No
451	HARRIS CREEK ES	E	KI-5	Y-R		899	291	32.4%	30	3.3%	83	9.2%	YES	83.3	Dst	Hgh	Yes
306	HERBERT AKINS RD ES	E	KI-5	Y-R		845	241	28.5%	20	2.4%	45	5.3%	NO	81.7	Dst	Hgh	Yes
454	HERITAGE ES	E	KI-5	Y-R		877	123	14.0%	19	2.2%	25	2.9%	NO	88.1	Dst	Hgh	No
443	HIGHCROFT DR ES	E	KI-5	Y-R tr 4		833	43	5.2%	7	0.8%	39	4.7%	NO	96.0	HE	Hgh	Yes
446	HODGE RD ES	E	KI-5	Y-R		607	502	82.7%	92	15.2%	251	41.4%	YES	64.1	Pro	Exp	No
457	HOLLY GROVE ES	E	KI-5	Y-R		1,081	158	14.6%	10	0.9%	19	1.8%	NO	88.6	Dst	Hgh	Yes



WCPSS School General Information, 2012-2013

Code	School Name	Level	Grade Span	Calendar	Magnet Programs	School Membership 2012-13	F&R	Percent F&R	ESL	Percent ESL	LEP	Percent LEP	TITLE 1 PROGRAM	NC ABC Results Performance Composite % 2011-12	NC ABC Results Performance Recognition 2011-12	NC ABC Results Growth Recognition 2011-12	Met All AMO Targets
449	HOLLY RIDGE ES	E	KI-5	T		832	233	28.0%	30	3.6%	56	6.7%	NO	84.9	Dst	Hgh	Yes
447	HOLLY SPRINGS ES	E	KI-5	Y-R		1,014	140	13.8%	10	1.0%	27	2.7%	NO	88.1	Dst	Hgh	Yes
448	HUNTER ES	E	KI-5	T	Gifted & Talented/AG Basics	705	333	47.2%	24	3.4%	47	6.7%	YES	69.7	Pro	Hgh	No
452	JEFFREYS GROVE ES	E	KI-5	T		482	160	33.2%	17	3.5%	29	6.0%	NO	83.3	Dst	Hgh	Yes
453	JONES DAIRY ES	E	KI-5	Y-R		815	134	16.4%	8	1.0%	14	1.7%	NO	91.0	HE	Hgh	Yes
456	JOYNER ES	E	KI-5	T	Center for Spanish Language/IB PYP	705	193	27.4%	25	3.6%	45	6.4%	NO	85.2	Dst	Exp	Yes
460	KINGSWOOD ES	E	KI-5	T		367	223	60.8%	54	14.7%	96	26.2%	YES	83.4	Dst	Hgh	Yes
464	KNIGHTDALE ES	E	KI-5	T		675	438	64.9%	78	11.6%	133	19.7%	YES	69.7	NR		No
468	LACY ES	E	KI-5	T		807	208	25.8%	31	3.8%	90	11.2%	NO	81.1	Dst	Hgh	No
474	LAKE MYRA ES	E	KI-5	Y-R tr 4		584	289	49.5%	53	9.1%	90	15.4%	YES	74.7	Pro	Exp	No
467	LAUREL PARK ES	E	KI-5	Y-R		945	124	13.1%	39	4.1%	59	6.2%	NO	88.1	Dst	Hgh	No
470	LEAD MINE ES	E	KI-5	T		509	189	37.1%	26	5.1%	40	7.9%	YES	86.5	Dst	Hgh	Yes
469	LEESVILLE RD ES	E	KI-5	T		916	243	26.5%	42	4.6%	61	6.7%	NO	84.5	Dst	Hgh	Yes
476	LINCOLN HEIGHTS ES	E	KI-5	T		504	328	65.1%	34	6.8%	76	15.1%	YES	68.0	Pro	Hgh	No
480	LOCKHART ES	E	KI-5	Y-R		679	366	53.9%	58	8.5%	109	16.1%	YES	79.4	Pro	Hgh	Yes
488	LYNN RD ES	E	KI-5	T		557	340	61.0%	34	6.1%	73	13.1%	YES	66.1	Pro	Hgh	No
494	MIDDLE CREEK ES	E	KI-5	Y-R		846	161	19.0%	26	3.1%	54	6.4%	NO	89.2	Dst	Hgh	Yes
496	MILLBROOK ES	E	KI-5	T	International Baccalaureate-PYP	768	505	65.8%	36	4.7%	134	17.4%	YES	74.0	Pro	Hgh	No
501	MILLS PARK ES	E	KI-5	T		962	84	8.7%	22	2.3%	47	4.9%	NO	94.6	HE	Hgh	Yes
504	MORRISVILLE ES	E	KI-5	Y-R		815	52	6.4%	31	3.8%	48	5.9%	NO	94.6	HE	Hgh	Yes
514	N FOREST PINES ES	E	KI-5	Y-R		815	176	21.6%	26	3.2%	59	7.2%	NO	85.0	Dst	Hgh	Yes
516	N RIDGE ES	E	KI-5	T		813	359	44.2%	43	5.3%	123	15.1%	YES	78.9	Pro	Hgh	Yes
520	NORTHWOODS ES	E	KI-5	T		524	214	40.8%	45	8.6%	75	14.3%	YES	86.3	Dst	Hgh	Yes
522	OAK GROVE ES	E	KI-5	Y-R		782	92	11.8%	27	3.5%	48	6.1%	NO	88.4	Dst	Hgh	No
524	OLDS ES	E	KI-5	T		356	94	26.4%	11	3.1%	15	4.2%	NO	89.5	Dst	Exp	Yes
523	OLIVE CHAPEL ES	E	KI-5	Y-R		969	69	7.1%	23	2.4%	27	2.8%	NO	92.5	HE	Hgh	Yes
525	PARTNERSHIP ES	E	KI-5	MOD		312	81	26.0%	8	2.6%	10	3.2%	NO	74.8	Pro	Exp	No
530	PENNY RD ES	E	KI-5	T		680	168	24.7%	42	6.2%	53	7.8%	NO	84.9	Dst	Hgh	No
531	PLEASANT UNION ES	E	KI-5	Y-R		606	55	9.1%	2	0.3%	7	1.2%	NO	84.2	Dst	Exp	No
532	POE ES	E	KI-5	T	Montessori Gifted & Talented	368	209	56.8%	46	12.5%	59	16.0%	YES	74.0	Pro	Exp	Yes
536	POWELL ES	E	KI-5	T		446	260	58.3%	12	2.7%	22	4.9%	YES	73.2	Pro	Exp	Yes
540	RAND RD ES	E	KI-5	Y-R tr 4		540	186	34.4%	18	3.3%	30	5.6%	YES	83.5	Dst	Exp	Yes
542	REEDY CREEK ES	E	KI-5	T		683	357	52.3%	38	5.6%	123	18.0%	YES	77.2	Pro	Hgh	Yes
543	RICHLAND CREEK ES	E	KI-5	T		100	72	72.0%	2	2.0%	10	10.0%	YES				
302	RIVER BEND ES	E	KI-5	Y-R		741	432	58.3%	99	13.4%	196	26.5%	YES	82.6	Dst	Exp	Yes
544	ROLESVILLE ES	E	KI-5	T		665	280	42.1%	27	4.1%	37	5.6%	YES	84.6	Dst	Hgh	Yes
548	ROOT ES	E	KI-5	T		513	154	30.0%	23	4.5%	37	7.2%	NO	80.9	Dst	Hgh	Yes
550	SALEM ES	E	KI-5	Y-R		924	195	21.1%	106	11.5%	130	14.1%	NO	86.4	Dst	Hgh	No
554	SANFORD CREEK ES	E	KI-5	Y-R		719	185	25.7%	33	4.6%	46	6.4%	NO	80.0	Dst	Exp	Yes

WCPSS School General Information, 2012-2013

Code	School Name	Level	Grade Span	Calendar	Magnet Programs	School Membership 2012-13	F&R	Percent F&R	ESL	Percent ESL	LEP	Percent LEP	TITLE 1 PROGRAM	NC ABC Results Performance Composite % 2011-12	NC ABC Results Performance Recognition 2011-12	NC ABC Results Growth Recognition 2011-12	Met All AMO Targets
560	SMITH ES	E	KI-5	T	International Baccalaureate-PYP	624	479	76.8%	45	7.2%	151	24.2%	YES	70.5	NR		No
564	STOUGH ES	E	KI-5	T		574	317	55.2%	40	7.0%	111	19.3%	YES	72.5	Pro	Hgh	No
568	SWIFT CREEK ES	E	KI-5	T		566	237	41.9%	70	12.4%	78	13.8%	YES	87.3	Dst	Hgh	Yes
569	SYCAMORE CREEK ES	E	KI-5	Y-R		1,073	48	4.5%	4	0.4%	7	0.7%	NO	92.9	HE	Hgh	Yes
570	TIMBER DR ES	E	KI-5	Y-R tr 4		629	273	43.4%	33	5.3%	53	8.4%	YES	81.3	Dst	Hgh	Yes
571	TURNER CREEK ES	E	KI-5	Y-R		807	104	12.9%	21	2.6%	42	5.2%	NO	87.4	Dst	Exp	No
572	UNDERWOOD ES	E	KI-5	T	Gifted & Talented	545	120	22.0%	24	4.4%	38	7.0%	NO	86.2	Dst	Hgh	Yes
576	VANCE ES	E	KI-5	Y-R		480	182	37.9%	52	10.8%	81	16.9%	YES	75.5	Pro	Exp	No
580	VANDORA SPRINGS ES	E	KI-5	T		562	309	55.0%	43	7.7%	87	15.5%	YES	81.9	Dst	Hgh	Yes
606	W LAKE ES	E	KI-5	Y-R		889	169	19.0%	55	6.2%	68	7.7%	NO	81.5	Dst	Hgh	Yes
584	WAKE FOREST ES	E	KI-5	T		575	213	37.0%	27	4.7%	38	6.6%	YES	81.1	Dst	Exp	Yes
593	WAKEFIELD ES	E	KI-5	Y-R		684	213	31.1%	28	4.1%	88	12.9%	YES	78.1	Pro	Hgh	No
597	WAKELON ES	E	KI-5	T		530	412	77.7%	50	9.4%	76	14.3%	YES	73.2	Pro	Exp	Yes
599	WALNUT CREEK ES	E	KI-5	T		804	622	77.4%	88	10.9%	158	19.7%	YES	60.5	Pro	Hgh	No
596	WASHINGTON ES	E	KI-5	T	Gifted & Talented	601	172	28.6%	37	6.2%	72	12.0%	NO	87.2	Dst	Hgh	No
598	WEATHERSTONE ES	E	KI-5	T		673	201	29.9%	47	7.0%	120	17.8%	YES	89.0	Dst	Hgh	Yes
600	WENDELL ES	E	KI-5	T	Creative Arts & Science	478	286	59.8%	49	10.3%	53	11.1%	YES	72.8	Pro	Hgh	No
616	WILBURN ES	E	KI-5	Y-R		741	469	63.3%	76	10.3%	153	20.6%	YES	66.4	Pro	Hgh	No
618	WILDWOOD FOREST ES	E	KI-5	T		741	336	45.3%	43	5.8%	102	13.8%	YES	80.7	Dst	Hgh	Yes
620	WILEY ES	E	KI-5	T	International Studies	470	115	24.5%	10	2.1%	19	4.0%	NO	82.8	Dst	Hgh	No
624	WILLOW SPRINGS ES	E	KI-5	Y-R		916	274	29.9%	28	3.1%	51	5.6%	NO	92.8	HE	Hgh	Yes
626	YATES MILL ES	E	KI-5	T		544	286	52.6%	56	10.3%	116	21.3%	YES	84.9	Dst	Hgh	Yes
628	YORK ES	E	KI-5	T		502	260	51.8%	34	6.8%	49	9.8%	YES	79.7	Pro	Hgh	Yes
632	ZEBULON ES	E	KI-5	T	Gifted & Talented	531	330	62.1%	41	7.7%	77	14.5%	YES	81.2	Dst	Hgh	Yes
442	HILBURN DR ACADEMY	EM	KI-6	T		548	145	26.5%	24	4.4%	49	8.9%	NO	83.2	Dst	Hgh	Yes
312	APEX MS	M	6-8	T		1,094	205	18.7%	9	0.8%	31	2.8%	NO	91.8	HE	Exp	Yes
356	CARNAGE MS	M	6-8	T	Gifted & Talented/AG Basics	1,281	464	36.2%	24	1.9%	51	4.0%	NO	85.4	Dst	Hgh	No
360	CARROLL MS	M	6-8	T		808	492	60.9%	27	3.3%	93	11.5%	NO	63.6	NR		No
370	CENTENNIAL MS	M	6-8	MOD	University Connections and Leadership	562	231	41.1%	26	4.6%	43	7.7%	NO	77.4	Pro	Exp	No
388	DANIELS MS	M	6-8	T		1,197	514	42.9%	36	3.0%	82	6.9%	NO	77.5	Pro	Exp	No
391	DAVIS DR MS	M	6-8	T		1,132	71	6.3%	5	0.4%	22	1.9%	NO	94.7	HE	Hgh	Yes
394	DILLARD DR MS	M	6-8	T		1,078	486	45.1%	24	2.2%	93	8.6%	NO	81.2	NR		No
399	DURANT RD MS	M	6-8	Y-R		1,329	457	34.4%	28	2.1%	68	5.1%	NO	82.3	Dst	Exp	Yes
402	E CARY MS	M	6-8	Y-R		727	264	36.3%	25	3.4%	57	7.8%	NO	88.8	Dst	Hgh	Yes
404	E GARNER MS	M	6-8	T	International Baccalaureate/Creative Arts	1,248	707	56.7%	19	1.5%	72	5.8%	NO	71.8	Pro	Exp	No

WCPSS School General Information, 2012-2013

Code	School Name	Level	Grade Span	Calendar	Magnet Programs	School Membership 2012-13	F&R	Percent F&R	ESL	Percent ESL	LEP	Percent LEP	TITLE 1 PROGRAM	NC ABC Results Performance Composite % 2011-12	NC ABC Results Performance Recognition 2011-12	NC ABC Results Growth Recognition 2011-12	Met All AMO Targets
408	E MILLBROOK MS	M	6-8	T	International Baccalaureate/Creative Arts	1,085	669	61.7%	29	2.7%	100	9.2%	NO	65.3	NR		No
410	E WAKE MS	M	6-8	Y-R		981	649	66.2%	18	1.8%	106	10.8%	NO	71.0	Pro	Exp	No
424	FUQUAY-VARINA MS	M	6-8	T		872	420	48.2%	16	1.8%	38	4.4%	NO	78.3	Pro	Exp	Yes
444	HERITAGE MS	M	6-8	Y-R		1,405	241	17.2%	12	0.9%	23	1.6%	NO	91.2	HE	Hgh	Yes
458	HOLLY GROVE MS	M	6-8	Y-R		1,256	294	23.4%	25	2.0%	50	4.0%	NO	84.1	Dst	Exp	No
450	HOLLY RIDGE MS	M	6-8	T		1,101	293	26.6%	10	0.9%	29	2.6%	NO	84.7	Dst	Exp	Yes
471	LEESVILLE RD MS	M	6-8	T		1,166	302	25.9%	14	1.2%	46	4.0%	NO	85.1	Dst	Exp	Yes
472	LIGON MS	M	6-8	T	Gifted & Talented/AG Basics	1,157	349	30.2%	11	1.0%	33	2.9%	NO	86.8	Dst	Hgh	No
484	LUFKIN RD MS	M	6-8	Y-R		931	113	12.1%	20	2.2%	23	2.5%	NO	91.5	HE	Hgh	Yes
492	MARTIN MS	M	6-8	T	Gifted & Talented	1,016	254	25.0%	20	2.0%	49	4.8%	NO	82.5	Dst	Hgh	No
502	MILLS PARK MS	M	6-8	T		1,418	161	11.4%	9	0.6%	27	1.9%	NO	91.9	HE	Hgh	Yes
506	MOORE SQUARE MS	M	6-8	MOD	Museums	514	294	57.2%	10	2.0%	27	5.3%	NO	73.0	Pro	Exp	No
512	N GARNER MS	M	6-8	Y-R		1,030	528	51.3%	28	2.7%	73	7.1%	NO	75.5	Pro	Exp	No
400	REEDY CREEK MS	M	6-8	T		904	437	48.3%	19	2.1%	71	7.9%	NO	80.1	Dst	Exp	No
545	ROLESVILLE MS	M	6, 7	Y-R		521	178	34.2%	6	1.2%	27	5.2%	NO				
551	SALEM MS	M	6-8	Y-R		1,217	189	15.5%	28	2.3%	44	3.6%	NO	90.0	HE	Hgh	Yes
604	W CARY MS	M	6-8	T		937	235	25.1%	23	2.5%	67	7.2%	NO	86.5	Dst	Exp	Yes
607	W LAKE MS	M	6-8	Y-R		1,338	300	22.4%	12	0.9%	36	2.7%	NO	87.7	Dst	Exp	Yes
608	W MILLBROOK MS	M	6-8	T		966	408	42.2%	18	1.9%	75	7.8%	NO	78.4	Pro	Exp	No
592	WAKE FOREST-ROLESVILLE MS	M	6-8	T		1,092	426	39.0%	10	0.9%	41	3.8%	NO	78.4	Pro	Exp	No
594	WAKEFIELD MS	M	6-8	T		1,251	325	26.0%	13	1.0%	54	4.3%	NO	84.7	Dst	Exp	No
601	WENDELL MS	M	6-8	T		965	582	60.3%	17	1.8%	47	4.9%	NO	74.9	Pro	Exp	No
636	ZEBULON MS	M	6-8	T	Gifted & Talented	623	384	61.6%	14	2.3%	26	4.2%	NO	76.7	Pro	Exp	No
585	WAKE YOUNG MEN'S LEADERSHIP ACADEMY	MS	6, 7, 9	Early College		140	48	34.3%	0	0.0%	3	2.1%	NO	N/A	N/A	N/A	N/A
586	WAKE YOUNG WOMEN'S LEADERSHIP ACADEMY	MS	6, 7, 9	Early College		150	69	46.0%	0	0.0%	4	2.7%	NO	N/A	N/A	N/A	N/A
316	APEX HS	S	9-12	T		2,587	230	8.9%	27	1.0%	42	1.6%	NO	93.4	NR		No
318	ATHENS DR HS	S	9-12	T		1,989	639	32.1%	41	2.1%	112	5.6%	NO	80.5	Dst	Hgh	No
348	BROUGHTON HS	S	9-12	T		2,167	742	34.2%	69	3.2%	113	5.2%	NO	77.8	Pro	Hgh	No
368	CARY HS	S	9-12	T		2,383	788	33.1%	48	2.0%	117	4.9%	NO	87.8	Dst	Hgh	No
702	E WAKE SCHOOL OF ARTS, EDUCATION AND GLOBAL STUDIES HS	S	9-12	T		387	213	55.0%	1	0.3%	13	3.4%	NO	82.6	NR		No
703	E WAKE SCHOOL OF ENGINEERING SYSTEMS HS	S	9-12	T		373	168	45.0%	3	0.8%	11	3.0%	NO	76.2	NR		No
700	E WAKE SCHOOL OF HEALTH SCIENCE HS	S	9-12	T		382	178	46.6%	1	0.3%	10	2.6%	NO	80.7	NR		Yes
701	E WAKE SCHOOL OF INTEGRATED TECHNOLOGY HS	S	9-12	T		326	185	56.7%	7	2.2%	21	6.4%	NO	78.6	NR		No



WCPSS School General Information, 2012-2013

Code	School Name	Level	Grade Span	Calendar	Magnet Programs	School Membership 2012-13	F&R	Percent F&R	ESL	Percent ESL	LEP	Percent LEP	TITLE 1 PROGRAM	NC ABC Results Performance Composite % 2011-12	NC ABC Results Performance Recognition 2011-12	NC ABC Results Growth Recognition 2011-12	Met All AMO Targets
412	ENLOE HS	S	9-12	T	Gifted & Talented / International Baccalaureate DP	2,673	925	34.6%	43	1.6%	86	3.2%	NO	85.2	Dst	Hgh	No
428	FUQUAY-VARINA HS	S	9-12	T		1,917	563	29.4%	20	1.0%	49	2.6%	NO	86.9	Dst	Hgh	No
436	GARNER HS	S	9-12	T	International Baccalaureate-MYP & DP	2,400	1,045	43.5%	26	1.1%	88	3.7%	NO	85.0	Dst	Hgh	No
441	GREEN HOPE HS	S	9-12	T		2,219	128	5.8%	30	1.4%	45	2.0%	NO	96.7	Exc	Hgh	No
445	HERITAGE HS	S	9-12	T		1,827	481	26.3%	16	0.9%	34	1.9%	NO	85.6	Dst	Exp	No
455	HOLLY SPRINGS HS	S	9-12	T		2,232	435	19.5%	17	0.8%	34	1.5%	NO	91.1	Exc	Hgh	No
466	KNIGHTDALE HS	S	9-12	T		1,712	918	53.6%	37	2.2%	106	6.2%	NO	75.7	Pro	Hgh	No
473	LEESVILLE RD HS	S	9-12	T		2,317	417	18.0%	21	0.9%	62	2.7%	NO	89.6	Dst	Hgh	No
495	MIDDLE CREEK HS	S	9-12	T		1,984	519	26.2%	18	0.9%	66	3.3%	NO	84.3	Dst	Hgh	No
500	MILLBROOK HS	S	9-12	T	International Baccalaureate-MYP & DP	2,580	812	31.5%	53	2.1%	94	3.6%	NO	87.1	Dst	Hgh	No
526	PANTHER CREEK HS	S	9-12	T		2,341	265	11.3%	20	0.9%	39	1.7%	NO	94.3	HE	Hgh	Yes
552	SANDERSON HS	S	9-12	T		2,089	663	31.7%	81	3.9%	140	6.7%	NO	84.7	Dst	Hgh	No
562	SOUTHEAST RALEIGH HS	S	9-12	MOD	Center for Leadership and Technology	1,575	825	52.4%	16	1.0%	38	2.4%	NO	76.5	NR		No
583	WAKE EARLY COLLEGE OF HEALTH AND SCIENCES HS	S	9-13	Early College		267	88	33.0%	0	0.0%	0	0.0%	NO	99.1	HE	Hgh	Yes
588	WAKE FOREST-ROLESVILLE HS	S	9-12	T		1,977	507	25.6%	25	1.3%	59	3.0%	NO	89.2	Dst	Hgh	No
582	WAKE NC STATE STEM EARLY COLLEGE HS	S	9, 10	Early College		110	43	39.1%	0	0.0%	1	0.9%	NO	100.0	HE	Hgh	Yes
595	WAKEFIELD HS	S	9-12	T		2,529	803	31.8%	52	2.1%	138	5.5%	NO	87.0	Dst	Hgh	No
324	LONGVIEW SCHOOL	S/O	6-12	T		80	65	81.3%	0	0.0%	1	1.3%	NO	16.1	NS		Yes
528	MARY E PHILLIPS HS	S/O	9-12	T		207	151	72.9%	0	0.0%	6	2.9%	NO	22.1		Exp	No
508	MT VERNON/BRIDGES SCHOOL	S/O	KI-8	T		81	60	74.1%	3	3.7%	5	6.2%	NO	38.2		Exp	No
438	RIVER OAKS MS	S/O	6-8	T		40	33	82.5%	2	5.0%	3	7.5%	NO	57.8	NR		No
<b>TOTAL - 169 Schools</b>						<b>149,508</b>	<b>50,432</b>	<b>33.7%</b>	<b>5,326</b>	<b>3.6%</b>	<b>11,143</b>	<b>7.5%</b>	<b>58 Schools</b>				

Calendar Code	Description
T	Traditional calendar
Y-R	Multi-track year-round
Y-R tr 4	Year-round track 4 only
MOD	Modified calendar
Early College	Early Colleges/Leadership Academies

ABC Results Performance:
Honor School of Excellence (HE)
School of Excellence (Exc)
School of Distinction (Dst)
School of Progress (Pro)
No Recognition (NR)
Priority School (Pri)
No Status (NS) Schools with No ABCs Status (Special/Optional)

ABC Results Growth:		
High Growth (Hgh)	Expected Growth (Exp)	Expected Growth Not Achieved

**(AMO) ANNUAL MEASURABLE OBJECTIVES TARGETS**

<http://abcs.ncpublicschools.org/abcs/>



**WAKE COUNTY**  
PUBLIC SCHOOL SYSTEM

*Notes*