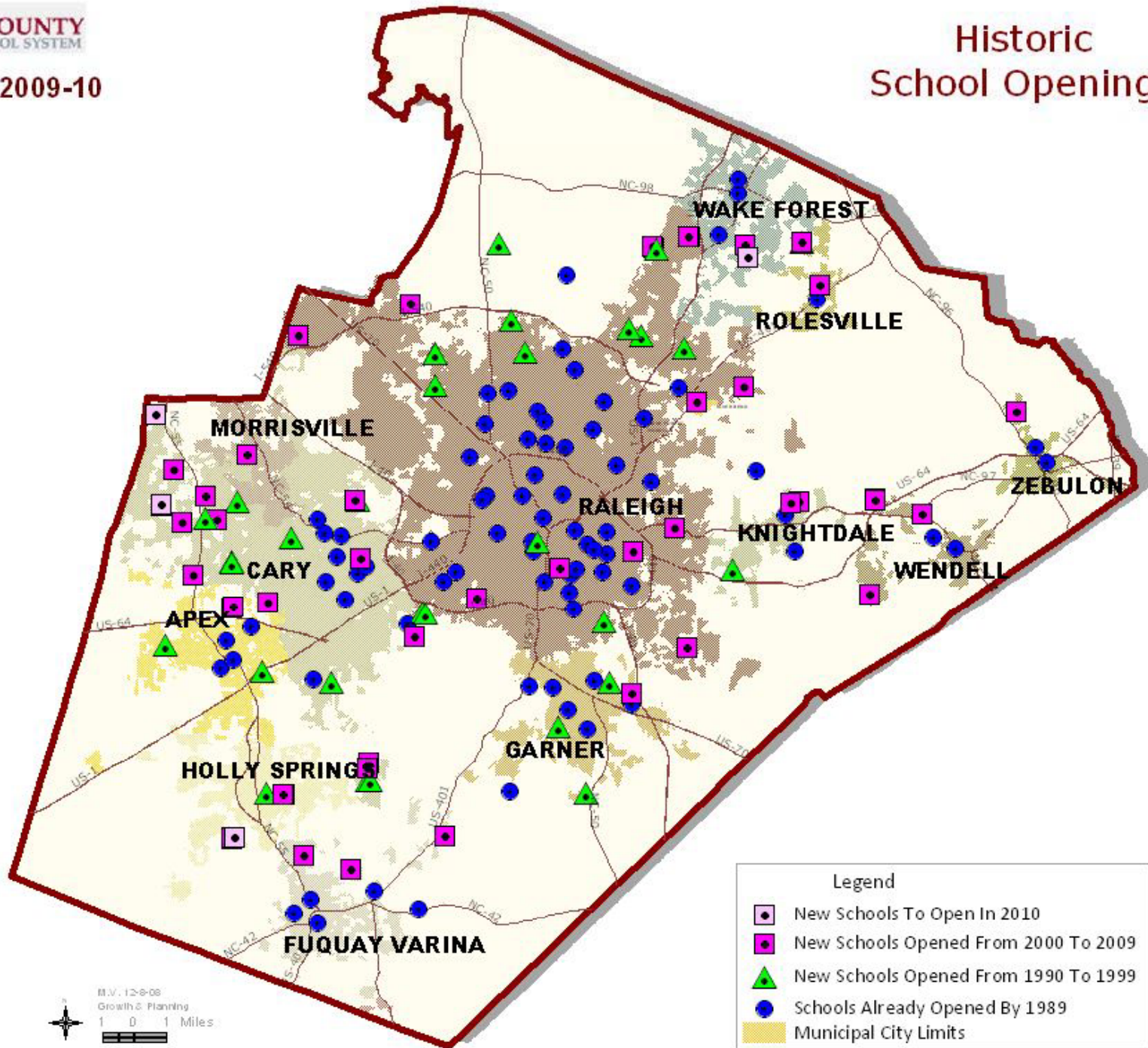

V. F.

Facilities Utilization

Historic School Openings



M.V. 12-8-08
Growth & Planning
1 0 1 Miles

NEW SCHOOL OPENINGS, 1988-2001

	1988-89= 76 schools	1989-90= 81 schools	1990-91= 83 schools	1991-92= 85 schools	1992-93= 91 schools	1993-94= 93 schools	1994-95= 94 schools	1995-96= 97 schools	1996-97= 102 schools	1997-98= 105 schools	1998-99= 106 schools	1999-2000= 113 schools	2000-01= 120 schools	2001-02= 120 schools
	Schools Opened: 0	Schools Opened: 5	Schools Opened: 2	Schools Opened: 2	Schools Opened: 6	Schools Opened: 2	Schools Opened: 1	Schools Opened: 3	Schools Opened: 5	Schools Opened: 3	Schools Opened: 1	Schools Opened: 7	Schools Opened: 7	Schools Opened: 0
Elementary Schools (ES)		Brassfield ES	Lead Mine ES	Morrisville ES-YR	Creech Road ES		Oak Grove ES-YR	Davis Drive ES	Baileywick ES	Olive Chapel ES	Partnership ES	Dillard Drive ES	Green Hope ES	
		Fox Road Es	Rand Road ES		Durant Road ES-YR			Hodge Road ES	Hilburn ES	Timber Drive ES		Reedy Creek ES	Middle Creek ES	
		Penny Road ES			Leesville Road ES			Weatherstone ES	Holly Springs ES			Wakefield ES	Salem ES	
					Pleasant Union ES				Jones Dairy ES			Wildwood Forest ES	Yates Mill ES	
					West Lake ES-YR									
Middle Schools (MS)		East Wake MS		Leesville Road MS	West Lake MS-YR	Durant Road MS-YR			Davis Drive MS			Dillard Drive MS	Centennial Campus MS	
		Zebulon MS										Lufkin Road MS-YR	Wakefield MS	
High Schools (HS)	9th Grade Centers-Expansions (9thG/Exp)	Regular				Leesville Road HS				Southeast Raleigh HS		Green Hope HS	Wakefield HS	
		Small Community HS												
Special/Optional Schools SP/OP														
Temporary Modular Schools (MOD)														
School Relocates to its Permanent Location														
School Serves as a Swing Space/Notes														

*School's Early Start at a Temporary Facility until its Permanent Facility is Built

* Year denotes a school opening with its own student membership, not the school's constructed date.

NEW SCHOOL OPENINGS, 2002-2010									
	2002-03= 123 schools	2003-04= 125 schools	2004-05= 132 schools	2005-06= 138 schools	2006-07= 147 schools	2007-08= 153 schools	2008-09= 156 schools	2009-10= 159 schools	2010-11= 163 schools
	Schools Opened: 3	Schools Opened: 4 Schools Closed: 2	Schools Opened: 7	Schools Opened: 6	Schools Opened: 9	Schools Opened: 7 Schools Closed: 1	Schools Opened: 3	Schools to Open: 3	Schools to Open: 4
Elementary Schools (ES)	Ballentine ES	Heritage ES-YR	Forestville Road ES	Cedar Fork ES	Barwell Road ES-YR	East Garner ES-YR	E17 ES-YR Sycamore Creek	E23 ES-YR Banks Road	E30 ES - Alston Ridge
		Holly Ridge ES	Highcroft Drive ES	*Forest Pines ES at DuBois Center MOD	Brier Creek ES-YR	North Forest Pines ES-YR	E22 ES-YR Mills Park	E34 ES- Lake Myra	
			Jones Dairy ES-YR	*Harris Creek ES at Spring Forest Rd. MOD	Carpenter ES-YR	Sanford Creek ES-YR	E26 ES-YR Laurel Park	E27 ES - Herbert Akins Road	
			Turner Creek ES-YR	*Wakelon ES at HW 97 MOD	*Holly Grove ES-YR at Holly Springs HS				
					*River Bend ES-YR at Spring Forest Road MOD				
Middle Schools (MS)	Moore Square MS	Holly Ridge MS	Heritage MS-YR			East Cary MS-YR-6th Grade			M9 MS-Holly Grove
		Reedy Creek MS	Salem MS			*Wendell MS at HW 97 MOD-Early Start			M10 MS-Mills Park
High Schools (HS)	Regular	Middle Creek HS		Knightdale HS		Holly Springs HS			H2-Heritage HS (9th and 10th)
						Panther Creek HS			
	Small Community HS				East Wake School of Health Science	East Wake School of Integrated Technology	East Wake School of Engineering Systems		
						Wake Early College of Health and Sciences	East Wake School of Arts, Education & Global Studies		
9th Grade Centers-Expansions (9thG/Exp)			Cary HS - 9th Gr. @ E. Cary MS Green Hope 9th Gr. @ Carpenter ES		Garner HS -Expansion	Wake Forest HS - 9th Gr. at DuBois MOD	Cary HS - Expansion		Wake Forest Reno/Expansion
						Wakefield HS - 9th Gr. at HWY 98			
Special/Optional Schools SP/OP				River Oaks MS SP/OPT				Hwy 97 Modular campus to be redistributed	
Temporary Modular Schools (MOD)				DuBois Center MOD			North Hills Modular	Hwy 97 Modular campus is relocated	
				Spring Forest Road MOD					
				HW 97 MOD					
School Relocates to its Permanent Location					Harris Creek ES	Forest Pines ES	E19 River Bend ES-YR	Wendell MS	
						Holly Grove ES-YR			
						Wakelon ES			
School Serves as a Swing Space/Notes		East Cary MS closed as a traditional school. Entire population moved to new Reedy Creek MS, the same code "400". Jones Dairy ES closed as trad. school. Entire pop. moved and became Heritage with the same code "454".	Jones Dairy ES reopened after reno in 2004 as a YR with new code 453.			East Wake High School closed as trad. high school (code "411" is deleted). In its building, 4 small community HSs operate (codes 700, 701, 702, and 703). East Cary MS reopens as a YR (new code 402) with 6th grade only. Serves also as 9th grade center for Cary HS.	E23-Banks Road ES as a swing space for Smith ES (reno). Springs Forest Modular as a swing space for Wilburn ES (reno). North Hills Modular as a swing space for Root ES (reno).	H2 Heritage HS as a swing space for Wake Forest-Rolesville (reno)	
*School's Early Start at a Temporary Facility until its Permanent Facility is Built									

* Year denotes a school opening with its own student membership, not the school's constructed date.

NEW SCHOOL OPENINGS, 1988-2001 - Summary														
	1988-89=76 schools	1989-90=81 schools	1990-91=83 schools	1991-92=85 schools	1992-93=91 schools	1993-94=93 schools	1994-95=94 schools	1995-96=97 schools	1996-97=102 schools	1997-98=105 schools	1998-99=106 schools	1999-2000=113 schools	2000-01=120 schools	2001-02=120 schools
Level	Schools Opened: 0	Schools Opened: 5	Schools Opened: 2	Schools Opened: 2	Schools Opened: 6	Schools Opened: 2	Schools Opened: 1	Schools Opened: 3	Schools Opened: 5	Schools Opened: 3	Schools Opened: 1	Schools Opened: 7	Schools Opened: 7	Schools Opened: 0
Elementary	48	51	53	54	59	59	60	63	67	69	70	74	78	78
Middle	14	16	16	17	18	19	19	19	20	20	20	22	24	24
High	11	11	11	11	11	12	12	12	12	13	13	14	15	15
Special / Optional	3	3	3	3	3	3	3	3	3	3	3	3	3	3
TOTAL	76	81	83	85	91	93	94	97	102	105	106	113	120	120

NEW SCHOOL OPENINGS, 2002-2010 - Summary									
	2002-03=123 schools	2003-04=125 schools	2004-05=132 schools	2005-06=138 schools	2006-07=147 schools	2007-08=153 schools	2008-09=156 schools	2009-10=159 schools	2010-11=163 schools
Level	Schools Opened: 3	Schools Opened: 4 Schools Closed: 2	Schools Opened: 7	Schools Opened: 6	Schools Opened: 9	Schools Opened: 7 Schools Closed: 1	Schools to Open: 3	Schools to Open: 3	Schools to Open: 4
Elementary	79	80	84	88	93	96	99	102	103
Middle	25	26	28	28	28	30	30	30	32
High	16	16	17	18	22	23	23	23	24
Special / Optional	3	3	3	4	4	4	4	4	4
TOTAL	123	125	132	138	147	153	156	159	163

Building Program Color Codes*

	PLAN 2000 = 14 schools
	PLAN 2004 = 11 schools (approved 13+preK, but E17, E19, PreK dropped re: inflation)
	CIP 2006 = 17 new schools (2 postponed), land and design start up for 13 future schools, 6-9th Grade Centers/HS Expansions
	2005-06 Crowding Solution= 3 MODULAR Schools
	Melinda and Bill Gates Foundation = 4 small HS (400 students each) housed in former East Wake High
	Wake Med = Wake Early College
	Plan 2000 = Closed as traditional school, re-open as Year-Round

*Shows actual year of school construction completion. School's Early Start in a temporary facility is not color-coded.

* Year denotes a school opening with its own student membership, not the school's constructed date.

WCPSS School General Information, 2009-2010

Level	School Name	Calendar	Magnet Program	School Membership 2009-10	Number Permanent Learning Spaces	20th Day Actual Membership	Special Needs Program Adjustment	Existing School Building Capacity	Existing Mobiles	Annual School Campus Capacity [ASCC]	Percent in Mobile Units	Percent Crowding Using Existing Mobiles
E	Adams Elementary	Y-R	N/A	730	37	730	(16)	705	8	873	21.0%	83.6%
E	Apex Elementary	T	N/A	651	37	651	42	586	4	720	12.7%	90.4%
E	Aversboro Elementary	T	N/A	555	40	555	(83)	655	0	572	0.0%	97.0%
E	Baileywick Elementary	T	N/A	467	32	467	(15)	471	0	456	0.0%	102.4%
E	Ballentine Elementary	Y-R	N/A	668	36	668	22	682	4	796	11.5%	83.9%
E	Banks Road Elementary	Y-R	N/A	585	51	585	0	862	0	862	0.0%	67.9%
E	Barwell Elementary	Y-R	N/A	759	48	759	19	1009	0	1028	0.0%	73.8%
E	Baucom Elementary	T	N/A	699	39	699	3	632	10	865	26.5%	80.8%
E	Brassfield Elementary	Y-R	N/A	770	35	770	0	659	5	774	14.8%	99.5%
E	Brentwood Elementary	T	Engineering	404	32	404	(153)	433	5	395	29.1%	102.3%
E	Briarcliff Elementary	T	N/A	538	35	538	(87)	540	4	545	16.8%	98.7%
E	Brier Creek Elementary	Y-R	N/A	726	38	726	14	728	6	880	15.6%	82.5%
E	Brooks Elementary	T	Museums	553	33	553	26	477	1	526	4.3%	105.1%
E	Bugg Elementary	T	Creative Arts & Science	400	19	400	3	113	16	484	0.0%	82.6%
E	Carpenter Elementary	Y-R	N/A	805	37	805	28	705	0	733	0.0%	109.8%
E	Carver Elementary	MOD	N/A	419	39	419	(131)	632	5	616	18.6%	68.0%
E	Cary Elementary	T	N/A	506	36	506	(32)	563	0	531	0.0%	95.3%
E	Cedar Fork Elementary	T	N/A	845	38	845	0	609	6	747	18.4%	113.1%
E	Combs Elementary	T	Leadership	809	34	809	28	523	10	781	29.4%	103.6%
E	Conn Elementary	T	Active Learning and Technology	588	36	588	(41)	536	4	587	15.6%	100.2%
E	Creech Road Elementary	T	N/A	541	39	541	(147)	632	5	600	19.1%	90.2%
E	Davis Drive Elementary	T	N/A	945	39	945	(34)	632	13	897	33.3%	105.4%
E	Dillard Drive Elementary	T	N/A	698	36	698	(101)	563	10	692	33.2%	100.9%
E	Douglas Elementary	T	Creative Arts & Science	612	32	612	(32)	412	10	610	37.7%	100.3%
E	Durant Road Elementary	Y-R	N/A	979	35	979	(175)	659	18	898	46.1%	109.0%
E	East Garner Elementary	Y-R	N/A	703	46	703	(82)	963	0	881	0.0%	79.8%
E	Farmington Woods Elementary	T	International Baccalaureate	815	36	815	(46)	523	13	776	38.5%	105.0%
E	Forest Pines Drive Elementary	T	N/A	767	40	767	0	655	0	655	0.0%	117.1%
E	Forestville Road Elementary	T	N/A	682	39	682	(101)	632	6	669	20.6%	101.9%
E	Fox Road Elementary	T	N/A	846	35	846	(147)	540	23	922	57.3%	91.8%
E	Fuller Elementary	T	Gifted & Talented (AG Basics)	533	30	533	3	339	8	526	34.9%	101.3%
E	Fuquay-Varina Elementary	T	N/A	747	38	747	(165)	609	13	743	40.2%	100.5%
E	Green Elementary	Y-R	N/A	522	33	522	(38)	613	4	667	13.7%	78.3%
E	Green Hope Elementary	Y-R	N/A	863	38	863	42	728	9	977	21.1%	88.3%
E	Harris Creek Elementary	Y-R	N/A	848	48	848	76	1009	4	1177	7.8%	72.0%
E	Herbert Akins Road Elementary	Y-R	N/A	626	51	626	0	862	0	862	0.0%	72.6%

WCPSS School General Information, 2009-2010

Level	School Name	Calendar	Magnet Program	School Membership 2009-10	Number Permanent Learning Spaces	20th Day Actual Membership	Special Needs Program Adjustment	Existing School Building Capacity	Existing Mobiles	Annual School Campus Capacity [ASCC]	Percent in Mobile Units	Percent Crowding Using Existing Mobiles
E	Heritage Elementary	Y-R	N/A	845	37	845	55	705	7	921	17.4%	91.7%
E	Highcroft Drive Elementary	Y-R	N/A	748	38	748	81	779	9	1067	19.4%	70.1%
E	Hilburn Drive Elementary	T	N/A	504	35	504	(34)	540	8	690	26.6%	73.0%
E	Hodge Road Elementary	Y-R	N/A	759	36	759	(124)	682	5	673	17.0%	112.8%
E	Holly Grove Elementary	Y-R	N/A	772	46	772	32	963	0	995	0.0%	77.6%
E	Holly Ridge Elementary	T	N/A	704	36	704	14	563	8	761	24.1%	92.5%
E	Holly Springs Elementary	Y-R	N/A	1070	36	1070	38	733	16	1139	32.3%	93.9%
E	Hunter Elementary	T	Gifted & Talented (AG Basics)	828	39	828	(87)	546	6	597	23.1%	138.7%
E	Jeffreys Grove Elementary	T	N/A	462	32	462	40	471	3	580	11.8%	79.7%
E	Jones Dairy Elementary	Y-R	N/A	801	36	801	37	682	4	811	11.3%	98.8%
E	Joyner Elementary	T	Center for Spanish Language/IB PYP	590	31	590	37	408	8	629	29.2%	93.8%
E	Kingswood Elementary	T	N/A	341	27	341	(9)	356	0	347	0.0%	98.3%
E	Knightdale Elementary	T	N/A	528	40	528	(244)	655	8	595	30.9%	88.7%
E	Lacy Elementary	T	N/A	831	40	831	63	655	0	718	0.0%	115.7%
E	Lake Myra Elementary	Y-R	N/A	473	51	473	0	862	0	862	0.0%	54.9%
E	Laurel Park Elementary	Y-R	N/A	933	46	933	0	963	0	963	0.0%	96.9%
E	Lead Mine Elementary	T	N/A	483	35	483	0	540	1	563	4.0%	85.8%
E	Leesville Road Elementary	Y-R	N/A	1057	35	1057	37	710	16	1115	33.0%	94.8%
E	Lincoln Heights Elementary	T	N/A	557	37	557	(66)	559	15	778	36.6%	71.6%
E	Lockhart Elementary	Y-R	N/A	728	37	728	(45)	705	13	959	31.1%	75.9%
E	Lynn Road Elementary	T	N/A	622	40	622	(18)	655	0	637	0.0%	97.6%
E	Middle Creek Elementary	Y-R	N/A	948	37	948	2	756	16	1126	32.6%	84.2%
E	Millbrook Elementary	T	International Baccalaureate	771	46	771	(92)	753	0	661	0.0%	116.6%
E	Mills Park Elementary	Y-R	N/A	781	51	781	0	1078	0	1078	0.0%	72.4%
E	Morrisville Elementary	Y-R	N/A	807	35	807	24	659	5	798	14.4%	101.1%
E	North Forest Pines Elementary	Y-R	N/A	818	40	818	28	774	0	802	0.0%	102.0%
E	North Ridge Elementary	T	N/A	779	34	779	(73)	517	13	743	40.2%	104.8%
E	Northwoods Elementary	T	N/A	537	34	537	5	517	3	591	11.6%	90.9%
E	Oak Grove Elementary	Y-R	N/A	845	35	845	24	659	5	798	14.4%	105.9%
E	Olds Elementary	T	N/A	314	18	314	(55)	323	0	268	0.0%	117.2%
E	Olive Chapel Elementary	Y-R	N/A	1028	36	1028	51	733	14	1106	29.1%	92.9%
E	Partnership Elementary	MOD	N/A	324	20	324	(27)	324	0	297	0.0%	109.1%
E	Penny Road Elementary	T	N/A	633	35	633	0	540	9	747	27.7%	84.7%
E	Pleasant Union Elementary	Y-R	N/A	667	35	667	12	659	0	671	0.0%	99.4%
E	Poe Elementary	T	Montessori	342	29	342	(9)	369	0	360	0.0%	95.0%
E	Powell Elementary	T	Gifted & Talented	422	34	422	(32)	431	0	399	0.0%	105.8%

WCPSS School General Information, 2009-2010

Level	School Name	Calendar	Magnet Program	School Membership 2009-10	Number Permanent Learning Spaces	20th Day Actual Membership	Special Needs Program Adjustment	Existing School Building Capacity	Existing Mobiles	Annual School Campus Capacity [ASCC]	Percent in Mobile Units	Percent Crowding Using Existing Mobiles
E	Rand Road Elementary	Y-R	N/A	608	35	608	0	659	6	797	17.3%	76.3%
E	Reedy Creek Elementary	T	N/A	653	38	653	(46)	609	9	770	26.8%	84.8%
E	River Bend Elementary	Y-R	N/A	596	51	596	(22)	1078	0	1056	0.0%	56.4%
E	Rolesville Elementary	T	N/A	615	33	615	0	494	9	701	29.5%	87.7%
E	Root Elementary	T	N/A	476	33	476	60	494	0	554	0.0%	85.9%
E	Salem Elementary	Y-R	N/A	948	37	948	14	756	14	1092	29.4%	86.8%
E	Sanford Creek Elementary	Y-R	N/A	611	40	611	17	774	0	791	0.0%	77.2%
E	Smith Elementary	T	International Bacculaureate	465	51	465	(96)	777	0	681	0.0%	68.3%
E	Stough Elementary	T	N/A	529	29	529	(9)	402	10	623	36.9%	84.9%
E	Swift Creek Elementary	T	N/A	486	31	486	23	448	2	517	8.8%	94.0%
E	Sycamore Creek Elementary	Y-R	N/A	712	51	712	0	1078	0	1078	0.0%	66.0%
E	Timber Drive Elementary	Y-R	N/A	840	36	840	(61)	682	9	828	25.0%	101.4%
E	Turner Creek Elementary	Y-R	N/A	924	38	924	63	779	7	1003	16.0%	92.1%
E	Underwood Elementary	T	Gifted & Talented	524	33	524	17	458	0	475	0.0%	110.3%
E	Vance Elementary	Y-R	N/A	613	28	613	3	498	6	639	21.5%	95.9%
E	Vandora Springs Elementary	T	N/A	520	34	520	(29)	517	5	603	19.0%	86.2%
E	Wake Forest Elementary	T	N/A	629	40	629	12	638	0	650	0.0%	96.8%
E	Wakefield Elementary	Y-R	N/A	831	36	831	37	733	11	1023	24.7%	81.2%
E	Wakelon Elementary	T	N/A	508	46	508	(4)	685	0	681	0.0%	74.6%
E	Washington Elementary	T	Gifted & Talented	591	39	591	(14)	546	0	532	0.0%	111.1%
E	Weatherstone Elementary	T	N/A	846	36	846	(18)	563	13	844	35.4%	100.2%
E	Wendell Elementary	T	Creative Arts & Science	424	35	424	(29)	481	2	498	9.2%	85.1%
E	West Lake Elementary	Y-R	N/A	773	35	773	(8)	659	13	950	31.4%	81.4%
E	Wilburn Elementary	Y-R	N/A	691	32	691	58	590	12	924	29.8%	74.8%
E	Wildwood Forest Elementary	T	N/A	740	38	740	(32)	609	9	784	26.4%	94.4%
E	Wiley Elementary	T	International Studies	454	30	454	0	403	0	403	0.0%	112.7%
E	Willow Springs Elementary	Y-R	N/A	884	32	884	79	641	16	1088	33.8%	81.3%
E	Yates Mill Elementary	T	N/A	532	37	532	(32)	586	0	554	0.0%	96.0%
E	York Elementary	T	N/A	380	33	380	(20)	494	4	566	16.2%	67.1%
E	Zebulon Elementary	T	Gifted & Talented	489	40	489	(96)	569	4	565	16.2%	86.5%
M	Apex Middle	T	N/A	1005	63	1005	59	1059	0	1118	0.0%	89.9%
M	Carnage Middle	T	Gifted & Talented (AG Basics)	1031	60	1031	0	877	7	1059	17.1%	97.4%
M	Carroll Middle	T	N/A	716	54	716	43	825	0	868	0.0%	82.5%
M	Centennial Campus Middle	MOD	University Connections and Leadership	662	40	662	(26)	572	0	546	0.0%	121.2%
M	Daniels Middle	T	N/A	1222	62	1222	(79)	1033	6	1110	14.0%	110.1%

WCPSS School General Information, 2009-2010

Level	School Name	Calendar	Magnet Program	School Membership 2009-10	Number Permanent Learning Spaces	20th Day Actual Membership	Special Needs Program Adjustment	Existing School Building Capacity	Existing Mobiles	Annual School Campus Capacity [ASCC]	Percent in Mobile Units	Percent Crowding Using Existing Mobiles
M	Davis Drive Middle	T	N/A	1184	56	1184	51	877	10	1188	21.8%	99.7%
M	Dillard Drive Middle	T	N/A	1171	62	1171	(53)	1033	6	1136	13.7%	103.1%
M	Durant Road Middle	Y-R	N/A	1297	62	1297	(99)	1345	11	1532	18.6%	84.7%
M	East Cary Middle	Y-R	N/A	842	60	842	0	1293	0	1293	0.0%	65.1%
M	East Garner Middle	T	International Bacculaureate	1129	57	1129	(36)	851	5	945	13.7%	119.5%
M	East Millbrook Middle	T	International Bacculaureate	1214	63	1214	(18)	825	18	1275	36.7%	95.2%
M	East Wake Middle	Y-R	N/A	970	54	970	(116)	1137	12	1333	23.4%	72.8%
M	Fuquay-Varina Middle	T	N/A	983	57	983	25	903	0	928	0.0%	105.9%
M	Heritage Middle	Y-R	N/A	1257	60	1257	(108)	1293	0	1185	0.0%	106.1%
M	Holly Ridge Middle	T	N/A	1218	57	1218	(36)	903	14	1231	29.5%	98.9%
M	Leesville Road Middle	Y-R	N/A	1252	53	1252	(36)	1111	14	1439	25.2%	87.0%
M	Ligon Middle	T	Gifted & Talented (AG Basics)	1077	64	1077	(1)	981	3	1058	7.3%	101.8%
M	Lufkin Road Middle	Y-R	N/A	1187	57	1187	33	1215	0	1248	0.0%	95.1%
M	Martin Middle	T	Gifted & Talented	1059	64	1059	0	896	0	896	0.0%	118.2%
M	Moore Square Middle	MOD	Museums	468	37	468	(53)	651	0	598	0.0%	78.3%
M	North Garner Middle	Y-R	N/A	1258	56	1258	(40)	1189	5	1279	10.1%	98.4%
M	Reedy Creek Middle	T	N/A	819	57	819	(1)	903	0	902	0.0%	90.8%
M	Salem Middle	Y-R	N/A	1319	57	1319	2	1215	2	1269	4.0%	103.9%
M	Wake Forest-Rolesville Middle	T	N/A	1155	55	1155	0	851	10	1111	23.4%	104.0%
M	Wakefield Middle	T	N/A	1191	57	1191	68	903	13	1309	25.8%	91.0%
M	Wendell Middle	T	N/A	856	60	856	0	981	0	981	0.0%	87.3%
M	West Cary Middle	T	N/A	1049	56	1049	71	877	6	1104	14.1%	95.0%
M	West Lake Middle	Y-R	N/A	1448	56	1448	(58)	1189	12	1443	21.6%	100.3%
M	West Millbrook Middle	T	N/A	879	59	879	(19)	955	8	1144	18.1%	76.8%
M	Zebulon Middle	T	Gifted & Talented	564	58	564	49	740	0	789	0.0%	71.5%
S	Apex High	T	N/A	2269	82	2269	(12)	1639	35	2467	34.0%	92.0%
S	Athens Drive High	T	N/A	1830	86	1830	(99)	1735	15	1996	18.0%	91.7%
S	Broughton High	T	N/A	2269	89	2269	(6)	1799	12	2081	13.8%	109.0%
S	Cary High	T	N/A	2030	111	2030	0	2243	0	2243	0.0%	90.5%
S	East Wake School of Arts, Education and Global Studies	T	N/A	404	21	404	0	440	0	440	0.0%	91.8%
S	East Wake School of Engineering Systems	T	N/A	389	20	389	(1)	380	6	523	27.5%	74.4%
S	East Wake School of Health Science	T	N/A	374	20	374	45	328	1	397	6.0%	94.2%
S	East Wake School of Integrated Technology	T	N/A	358	21	358	(3)	448	0	445	0.0%	80.4%

WCPSS School General Information, 2009-2010

Level	School Name	Calendar	Magnet Program	School Membership 2009-10	Number Permanent Learning Spaces	20th Day Actual Membership	Special Needs Program Adjustment	Existing School Building Capacity	Existing Mobiles	Annual School Campus Capacity [ASCC]	Percent in Mobile Units	Percent Crowding Using Existing Mobiles
S	Enloe High	T	GT/IB Center for Humanities, Sciences & the Arts	2657	126	2657	36	2587	0	2659	0.0%	99.9%
S	Fuquay-Varina High	T	N/A	1921	82	1921	0	1639	23	2191	25.1%	87.7%
S	Garner High	T	International Baccalaureate	2311	86	2311	(24)	1727	40	2663	36.0%	86.8%
S	Green Hope High	T	N/A	1979	82	1979	66	1639	17	2113	19.3%	93.7%
S	Holly Springs High	T	N/A	1808	83	1808	78	1663	8	1933	9.9%	93.5%
S	Knightdale High	T	N/A	1939	83	1939	12	1663	16	2059	18.6%	94.2%
S	Leesville Road High	T	N/A	2501	104	2501	0	2075	12	2363	12.1%	105.8%
S	Middle Creek High	T	N/A	1754	82	1754	12	1639	18	2083	20.7%	84.2%
S	Millbrook High	T	International Baccalaureate	2432	104	2432	(15)	2075	18	2492	17.3%	97.6%
S	Panther Creek High	T	N/A	2239	83	2239	84	1663	22	2275	23.2%	98.4%
S	Sanderson High	T	N/A	1988	86	1988	14	1735	10	1989	12.0%	99.9%
S	Southeast Raleigh High	MOD	Technology	1565	85	1565	0	1663	12	1975	15.7%	79.2%
S	Wake Early College of Health and Sciences	WECHS	Early College	215	11	215	0	215	0	215	0.0%	100.0%
S	Wake Forest-Rolesville High	T	N/A	1949	83	1949	66	1663	27	2377	27.2%	82.0%
S	Wakefield High	T	N/A	2813	107	2813	(6)	2147	39	3077	30.4%	91.4%
S/O	Longview School	T	N/A	102	26	102	0	102	0	102	0.0%	100.0%
S/O	Mary E. Phillips High School	T	N/A	166	22	166	0	144	0	144	0.0%	115.3%
S/O	Mount Vernon School	T	N/A	79	30	79	0	110	1	120	8.3%	65.8%
S/O	River Oaks Middle School	T	N/A	28	14	28	0	0	0			
Total				139,599	7,305	139,599	-1,919	128,659	1,071	152,177	16.8%	91.7%

LEVEL
E = Elementary School
M = Middle School
S = High School
S/O = Special/Optional School

CALENDAR
T = Traditional Calendar
MOD = Modified Calendar
Y-R = Year-Round Calendar
WECHS = Matches Community College Calendar